

| EQUIPMENT LEGEND - CHECK VALVE VAULT | | | |
|--------------------------------------|---------------|---|--------------|
| MARK | SIZE | DESCRIPTION | MATERIAL |
| 1 | 24" | DOUBLE MECHANICAL SEALS, LINK SEAL, OR EQUAL | DUCTILE IRON |
| 2 | 24" | 30" OD WALL SLEEVE WITH WATER-STOP, STEEL OR THERMOPLASTIC | DUCTILE IRON |
| 3 | 24" | PRESSURE SUSTAINING VALVE | CAST IRON |
| 5 | 1 1/2" | SCH 80 PVC DRAIN PIPE | PVC |
| 6 | 1 1/2" | MECHANICAL SEAL, LINK SEAL, OR EQUAL, WITH 3 1/2" DIA OPENING | DUCTILE IRON |
| 8 | 1 1/2" | 90° ELL, SCH 80 PVC | PVC |
| 9 | | NOT USED | |
| 10 | 1 CU FT | #5 WASHED STONE | - |
| 11 | 18" ID | LADDER WITH 304 SS HARDWARE AND EXTENSION POST | ALUMINUM |
| 13 | 24" | RESTRAINED FLANGE ADAPTER | DUCTILE IRON |
| 14 | 24" | CHECK VALVE, SWING TYPE WITH AIR CUSHION, FLANGED | DUCTILE IRON |
| 15 | 6'-0" x 4'-0" | DOUBLE LEAF ALUMINUM HATCH WITH DRAIN, EMBEDDED ALUMINUM FRAME, 300 LBS/SQ FT | ALUMINUM |

- NOTES:
- INSTALL 1 CUBIC FOOT OF #5 WASHED STONE UNDER THE DISCHARGES OF THE HATCH DRAIN AND OPEN SUMP.
 - ALL BOLTS, WASHERS, NUTS AND FASTENERS SHALL BE 304 STAINLESS STEEL.
 - THE PRECAST VAULT SHALL BE CONSTRUCTED OF 5,000 PSI CONCRETE THAT IS REINFORCED WITH #4 @ 6" OCEW. MINIMUM WALL THICKNESS SHALL BE 6-INCHES. THE VAULT SHALL BE RATED FOR H-20 LOADS.

Prepared In the Office of:

AECOM

AECOM TECHNICAL SERVICES OF NORTH CAROLINA, INC.
701 CORPORATE CENTER DRIVE, SUITE 475, RALEIGH, NC 27607
919-854-6200 919-854-6259 (fax)
F - 0342

PROJECT REFERENCE NO. **R-5021** SHEET NO. **UC-3V**

DESIGNED BY: _____
DRAWN BY: _____
CHECKED BY: _____
APPROVED BY: _____
REVISED: _____

9/9/2021

NORTH CAROLINA PROFESSIONAL SEAL 10666

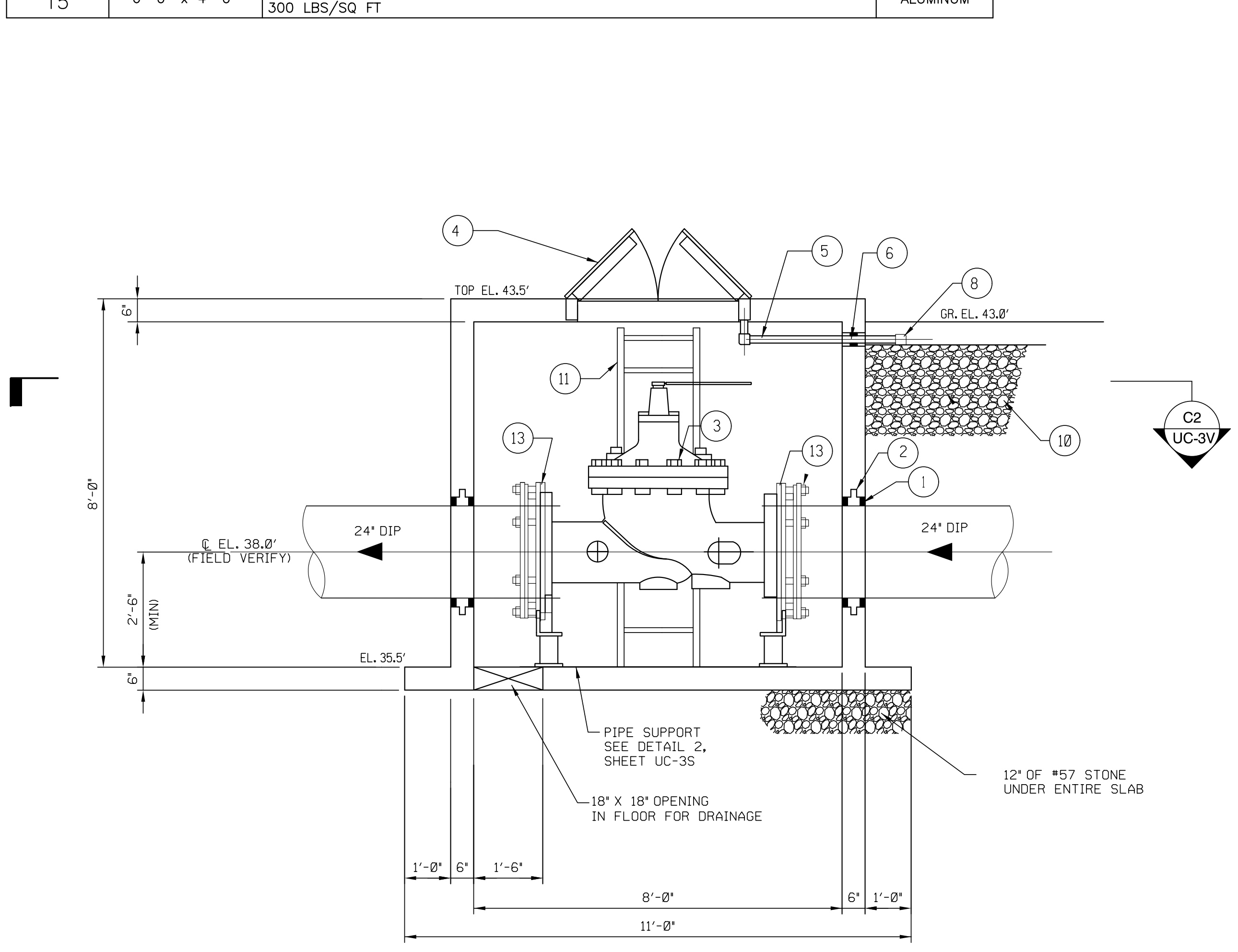
D. Stephen Scroggs

DOCUMENT NOT CONSIDERED FINAL UNLESS ALL SIGNATURES COMPLETED

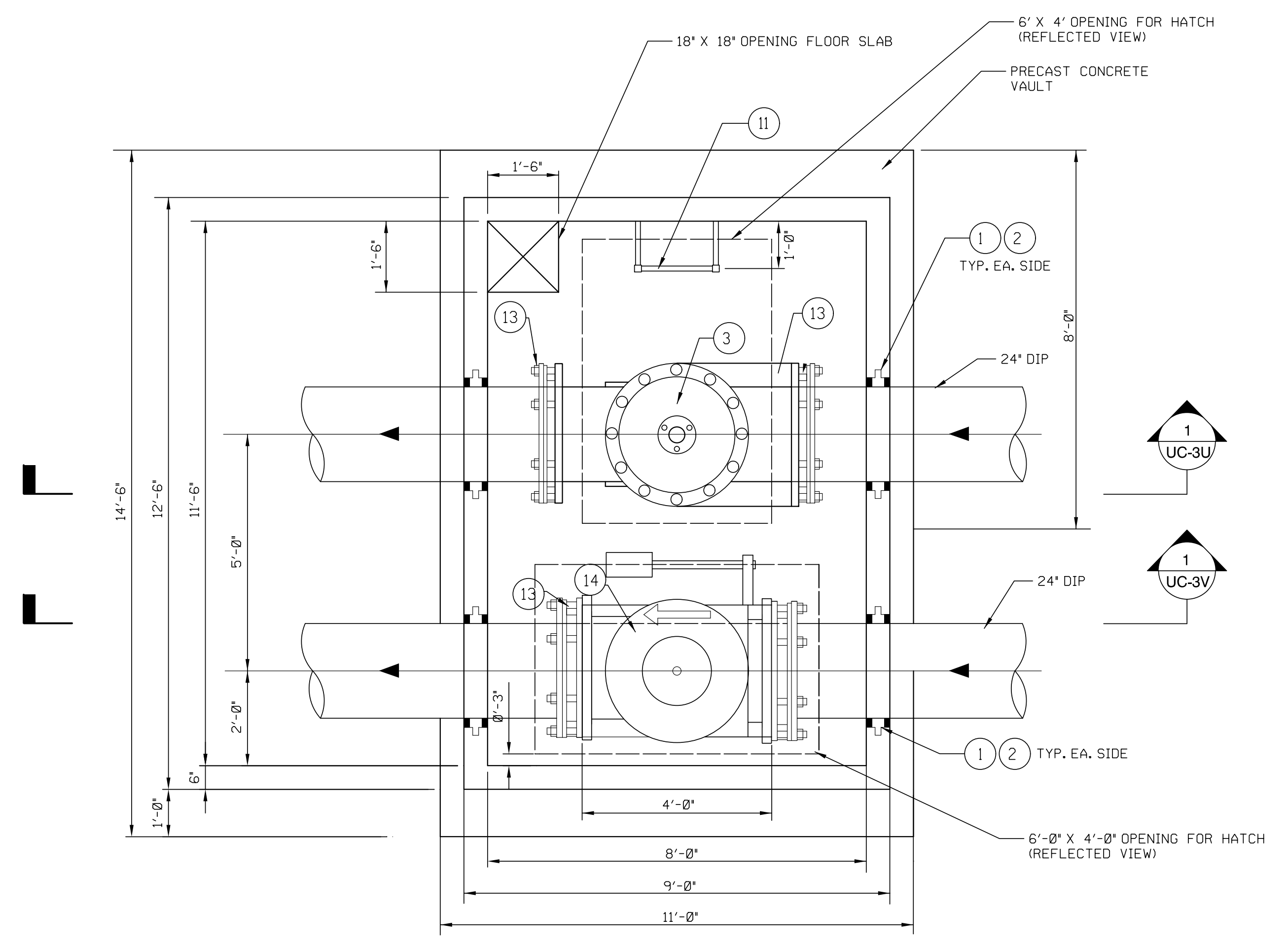
NORTH CAROLINA DEPARTMENT OF TRANSPORTATION UTILITIES ENGINEERING SEC. PHONE: (919) 707-6690 FAX: (919) 250-4151

UTILITY CONSTRUCTION PLANS ONLY

UTILITY CONSTRUCTION



SECTION VALVE VAULT
SCALE: 1/2" = 1'-0"
1



SECTION VALVE VAULT
SCALE: 1/2" = 1'-0"
2

DATE: 8/13/2021
TIME: 10:46:22 PM
DGN: P:\60482503\900_Work\915_Jimby_Construction\R-5021_UC_UC3V.dgn