

| EQUIPMENT LEGEND - CHECK VALVE VAULT NO. 1 | | | |
|--|-----------|---|--------------|
| MARK | SIZE | DESCRIPTION | MATERIAL |
| 1 | 12" | MECHANICAL SEALS, LINK SEAL, OR EQUAL | DUCTILE IRON |
| 2 | 18" | HOLE | |
| 3 | 12" | SWING CHECK VALVE, FLG, WITH AIR CUSHION AND WEIGHT | DUCTILE IRON |
| 4 | 30" X 30" | SINGLE LEAF ALUMINUM HATCH WITH EMBEDDED ALUMINUM FRAME, H-20 LOAD RATING | ALUMINUM |
| 5 | 1 1/2" | SCH 80 PVC DRAIN PIPE | PVC |
| 6 | 1 1/2" | MECHANICAL SEAL, LINK SEAL, OR EQUAL, WITH 3 1/2" DIA OPENING | DUCTILE IRON |
| 7 | 1 1/2" | PVC CHECK VALVE | PVC |
| 8 | 1 1/2" | 90° ELL, SCH 80 PVC | PVC |
| 9 | 1 CU FT | #5 WASHED STONE | - |
| 10 | 18" ID | LADDER WITH 304 SS HARDWARE AND EXTENSION POST | ALUMINUM |
| 11 | 12" | RESTRAINED FLANGE ADAPTER | DUCTILE IRON |

NOTES:
 1. INSTALL 1 CUBIC FOOT OF #5 WASHED STONE UNDER THE DISCHARGES OF THE HATCH DRAIN AND OPEN SUMP.
 2. ALL BOLTS, WASHERS, NUTS AND FASTENERS SHALL BE 304 STAINLESS STEEL.
 3. THE PRECAST VAULT SHALL BE CONSTRUCTED OF 5,000 PSI CONCRETE THAT IS REINFORCED WITH #4 @ 6" OCEW. MINIMUM WALL THICKNESS SHALL BE 6-INCHES. THE VAULT SHALL BE RATED FOR H-20 LOADS.

Prepared In the Office of:

AECOM

AECOM TECHNICAL SERVICES OF NORTH CAROLINA, INC.
 701 CORPORATE CENTER DRIVE, SUITE 475, RALEIGH, NC 27607
 919-854-6200 919-854-6259 (fax)
 F - 0342

PROJECT REFERENCE NO. **R-5021** SHEET NO. **UC-3T**

DESIGNED BY: _____
 DRAWN BY: _____
 CHECKED BY: _____
 APPROVED BY: _____
 REVISED: _____

9/9/2008

SEAL 10666

PROFESSIONAL ENGINEER

D. Stephen Scruggs

NORTH CAROLINA DEPARTMENT OF TRANSPORTATION

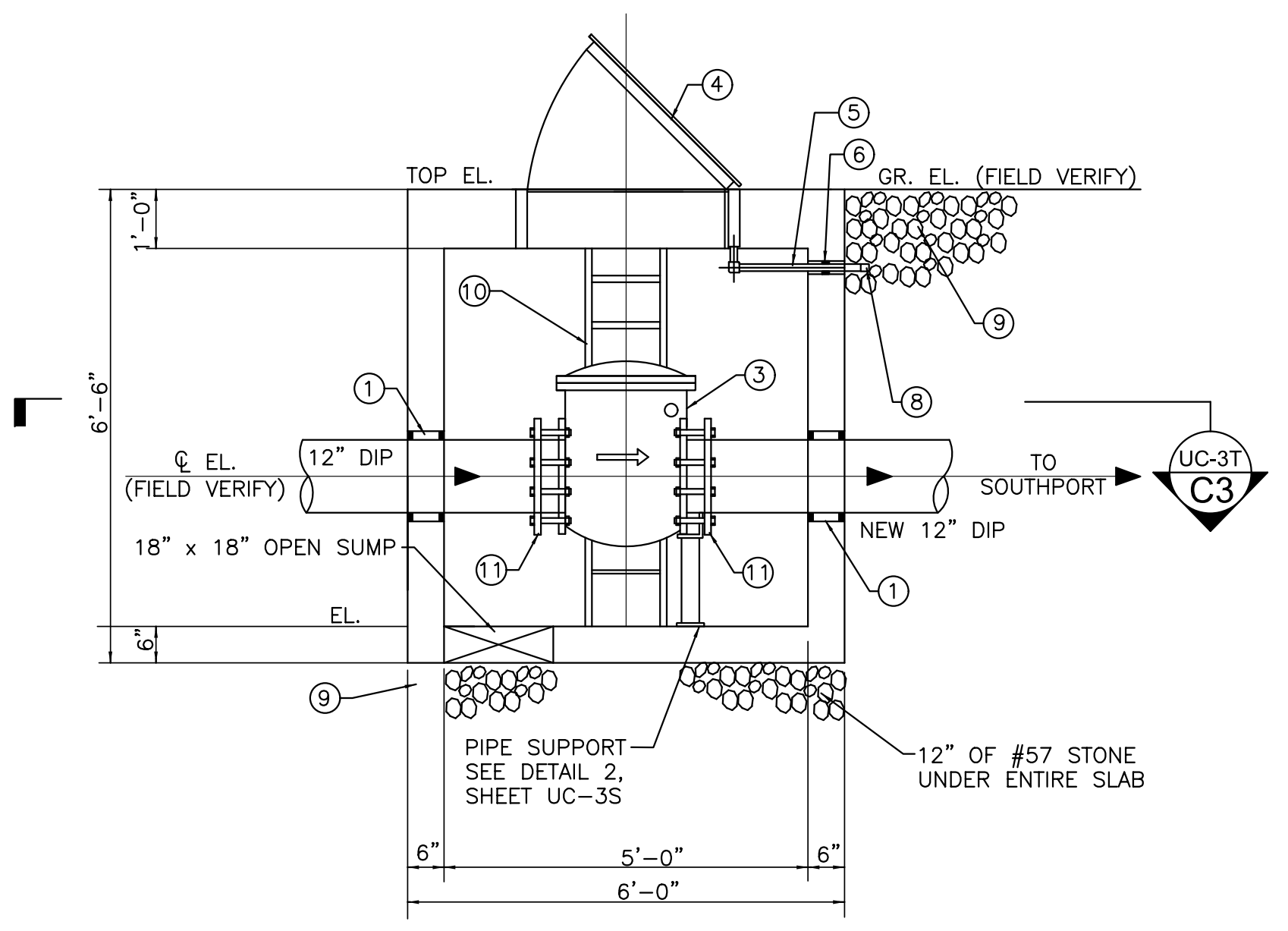
UTILITY ENGINEERING SECTION

PHONE: (919) 707-6690 FAX: (919) 250-4151

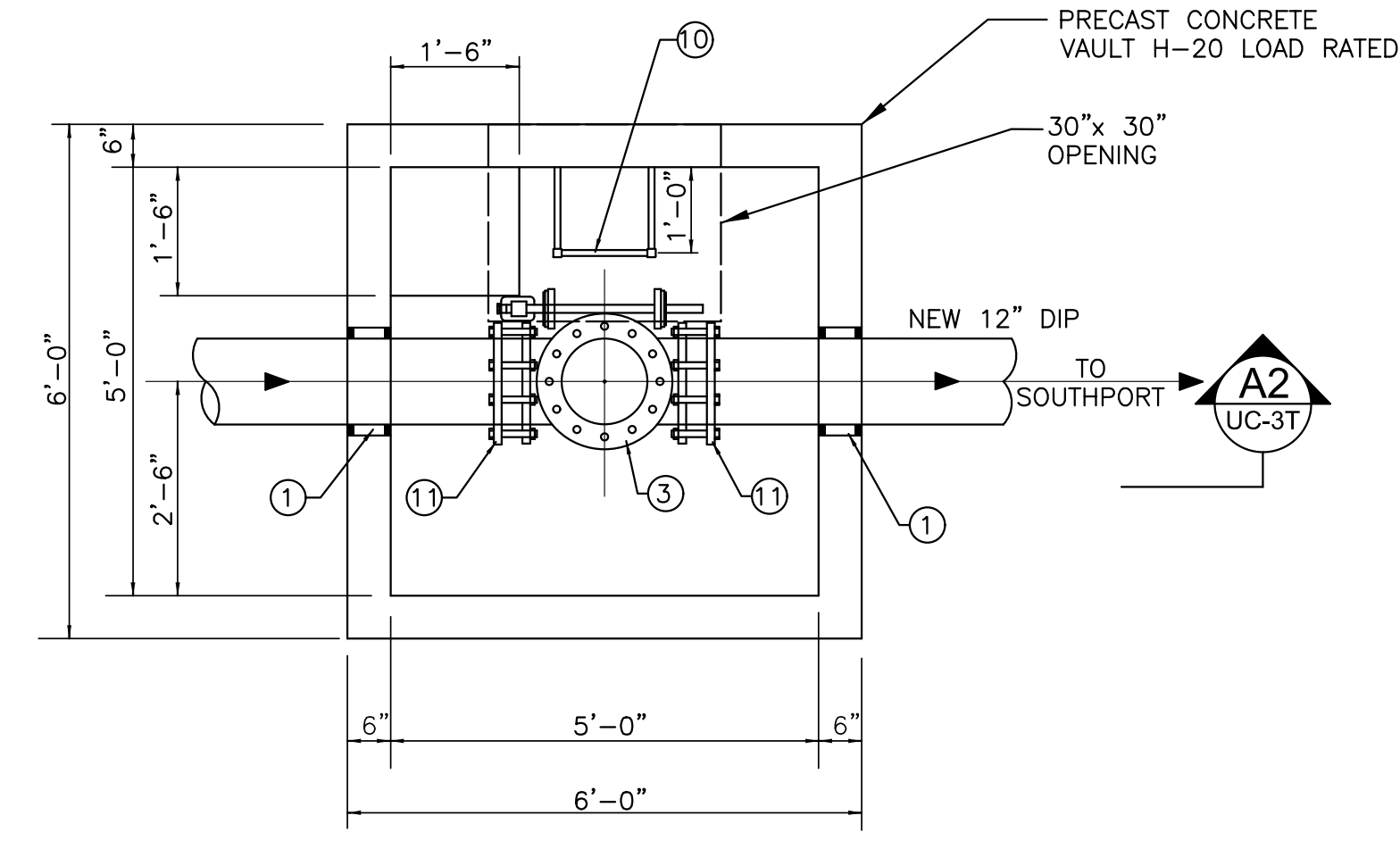
UTILITY CONSTRUCTION PLANS ONLY

DOCUMENT NOT CONSIDERED FINAL UNLESS ALL SIGNATURES COMPLETED

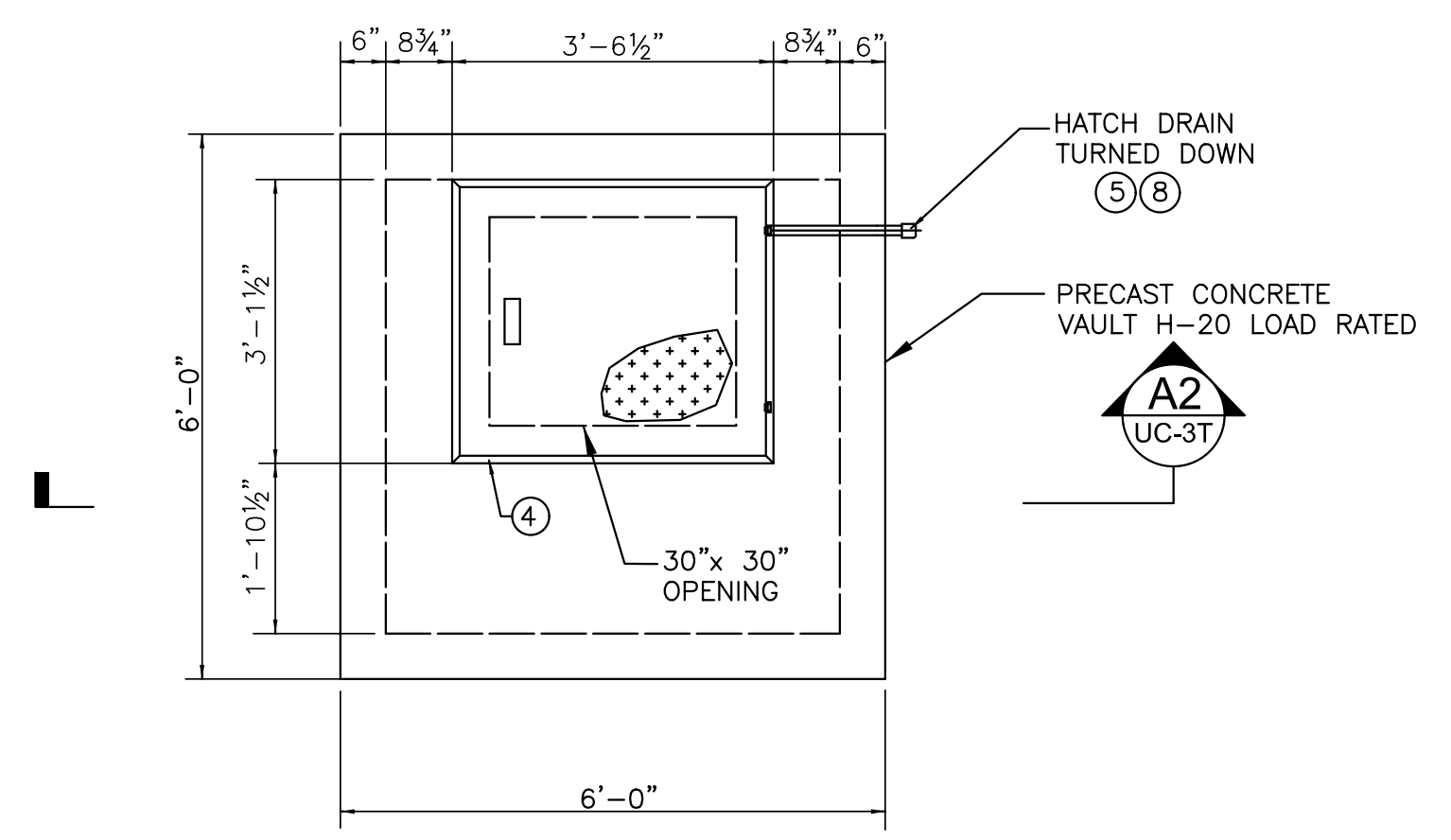
UTILITY CONSTRUCTION



SECTION CHECK VALVE VAULT
 SCALE: 1/2" = 1'-0"
A2



SECTION CHECK VALVE VAULT
 SCALE: 1/2" = 1'-0"
C3



PLAN AT TOP CHECK VALVE VAULT
 SCALE: 1/2" = 1'-0"
A3

DATE: 8/13/2008
 TIME: 10:44:41 PM
 DGN: P:\60482503\900_Works\9165_Jiminy_Construction\A3-UC-3T.dgn