

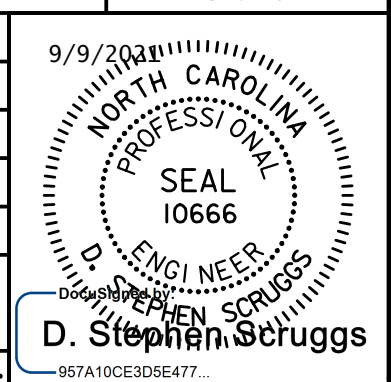
Prepared In the Office of:



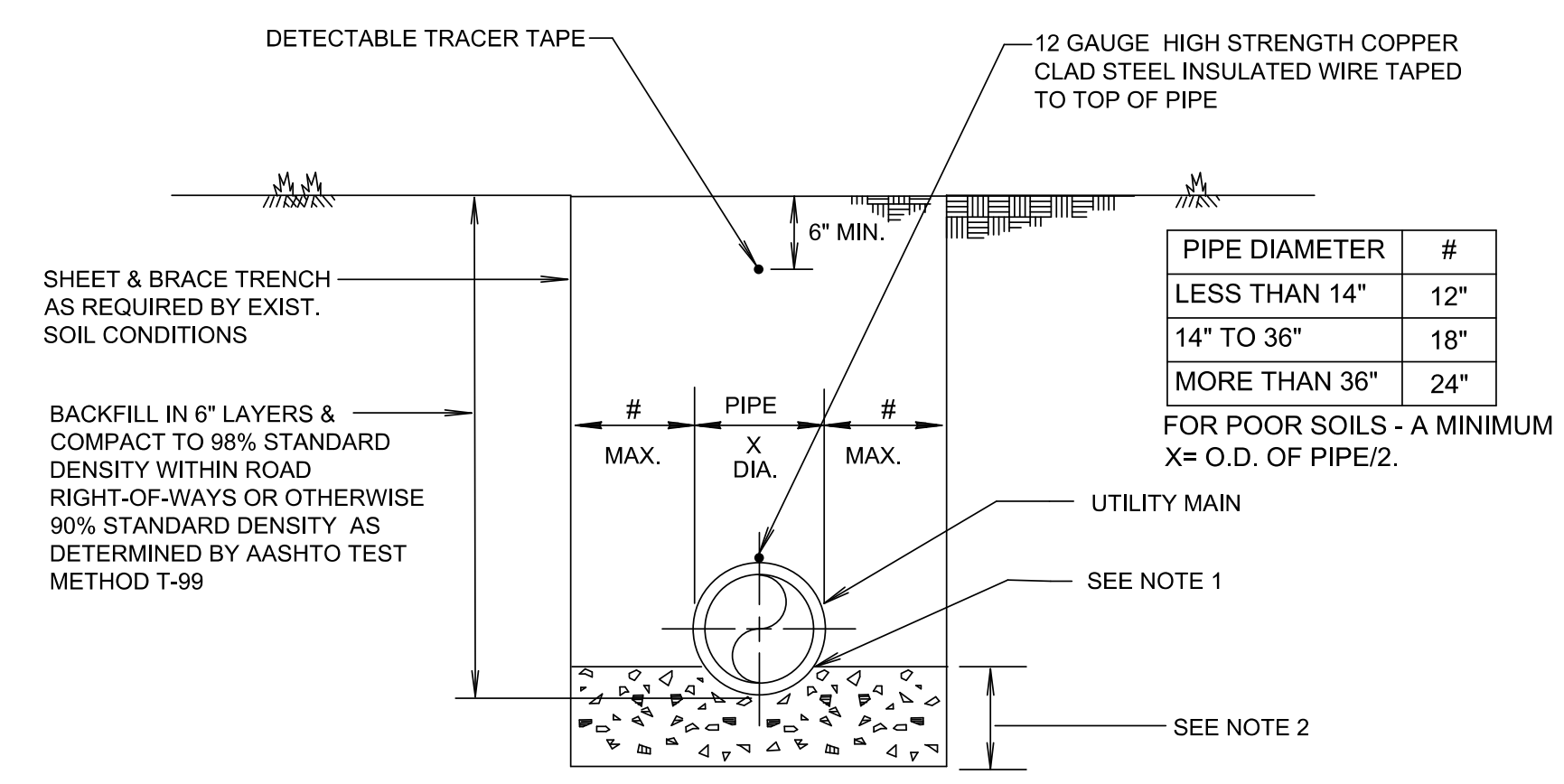
AECOM TECHNICAL SERVICES OF NORTH CAROLINA, INC.
701 CORPORATE CENTER DRIVE, SUITE 475, RALEIGH, NC 27607
919-854-6200 919-854-6259 (fax)
F - 0342

DOCUMENT NOT CONSIDERED FINAL
UNLESS ALL SIGNATURES COMPLETED

PROJECT REFERENCE NO.	SHEET NO.
R-5021	UC-3R
DESIGNED BY:	9/9/2004
DRAWN BY:	
CHECKED BY:	
APPROVED BY:	
REVISED:	
NORTH CAROLINA DEPARTMENT OF TRANSPORTATION	
UTILITIES ENGINEERING SEC. PHONE: (919) 707-6690 FAX: (919) 250-4151	

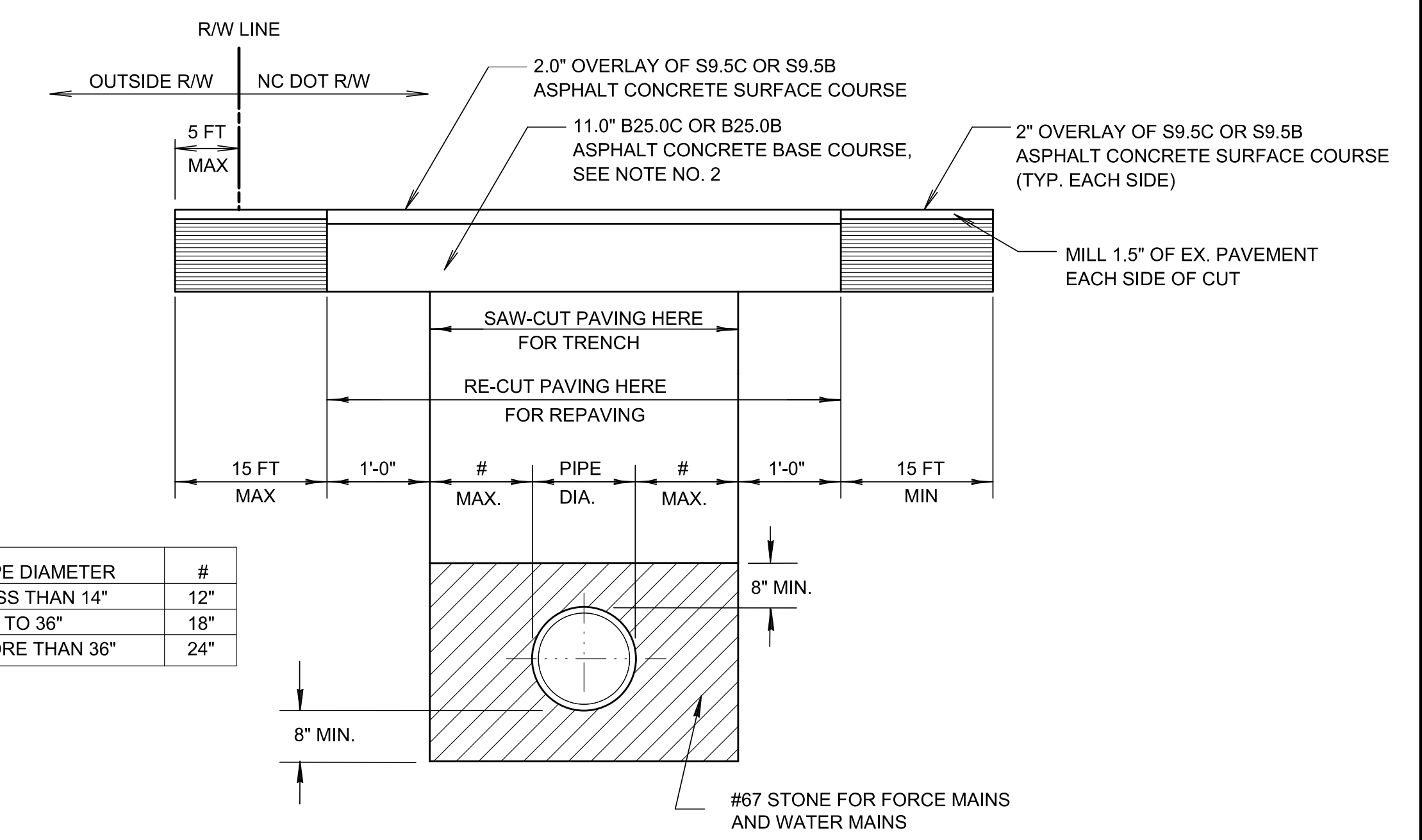


UTILITY CONSTRUCTION



- NOTES:
- SHAPE BOTTOM OF TRENCH TO FIT BOTTOM QUARTER ON SIDES OF AND BENEATH PIPE. BED ONE-QUARTER THE PIPE OUTSIDE DIAMETER ON THE SIDES OF AND 6" BENEATH PIPE WITH #67 STONE. EXCAVATE UNDER EACH BELL SUFFICIENTLY TO PREVENT ANY LOAD ON BELL.
 - WHERE UNSTABLE SOIL IS ENCOUNTERED, EXCAVATE THE SOIL AS DIRECTED BY THE ENGINEERS AND BACKFILL WITH AT LEAST 8" OF #467 STONE. THE BACKFILL SHALL BE COMPACTED AND SHAPED TO FORM A BED FOR THE PIPE.
 - BACKFILL IN 6" LAYERS AND COMPACT TO 98% STANDARD DENSITY WITHIN ROAD RIGHT-OF-WAYS OR OTHERWISE 90% STANDARD DENSITY AS DETERMINED BY AASHTO TEST METHOD T-99.

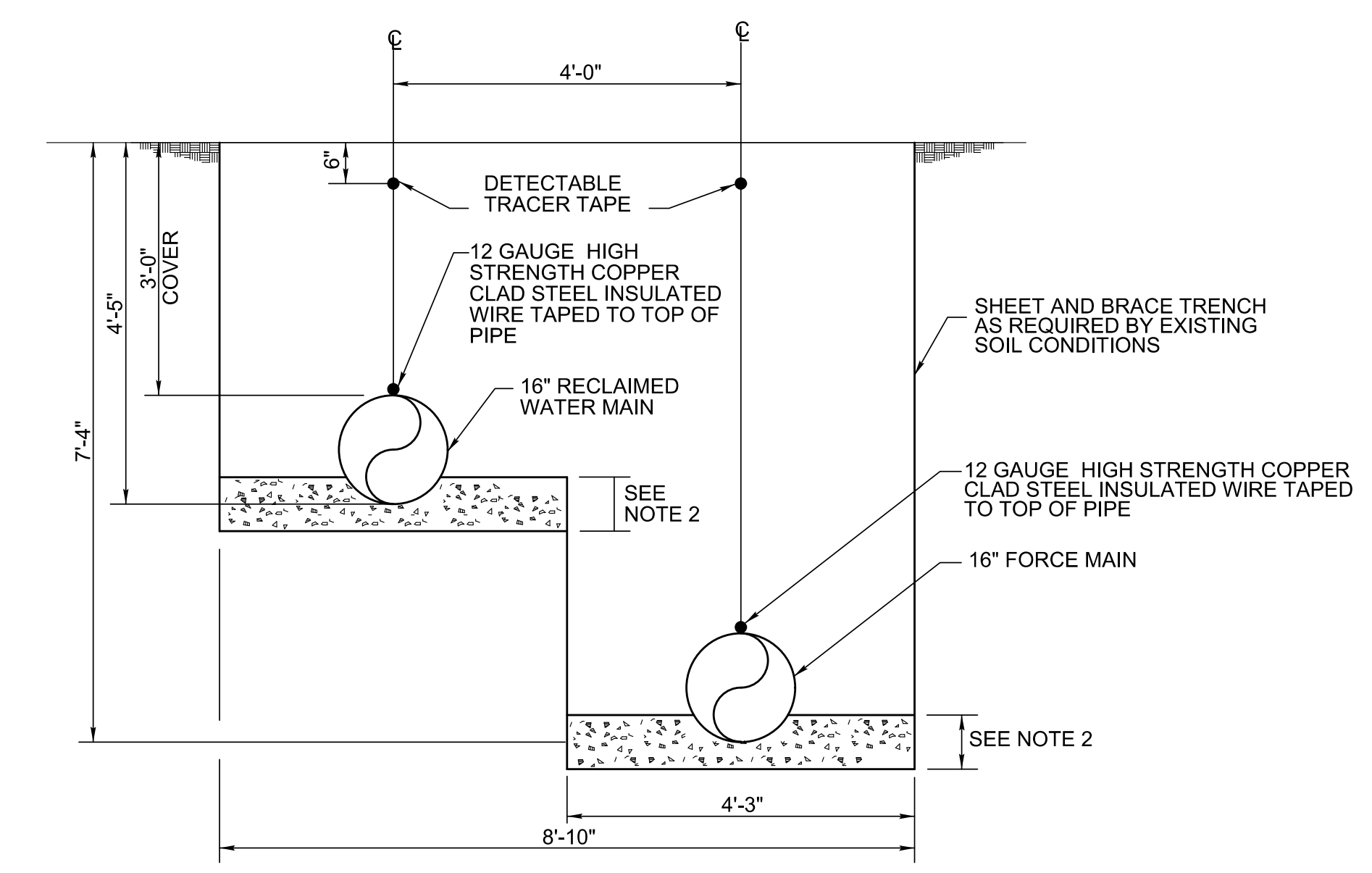
UTILITY PRESSURE MAINS TRENCH, BEDDING & BACKFILL DETAIL 1



PIPE DIAMETER	#
LESS THAN 14"	12"
14" TO 36"	18"
MORE THAN 36"	24"

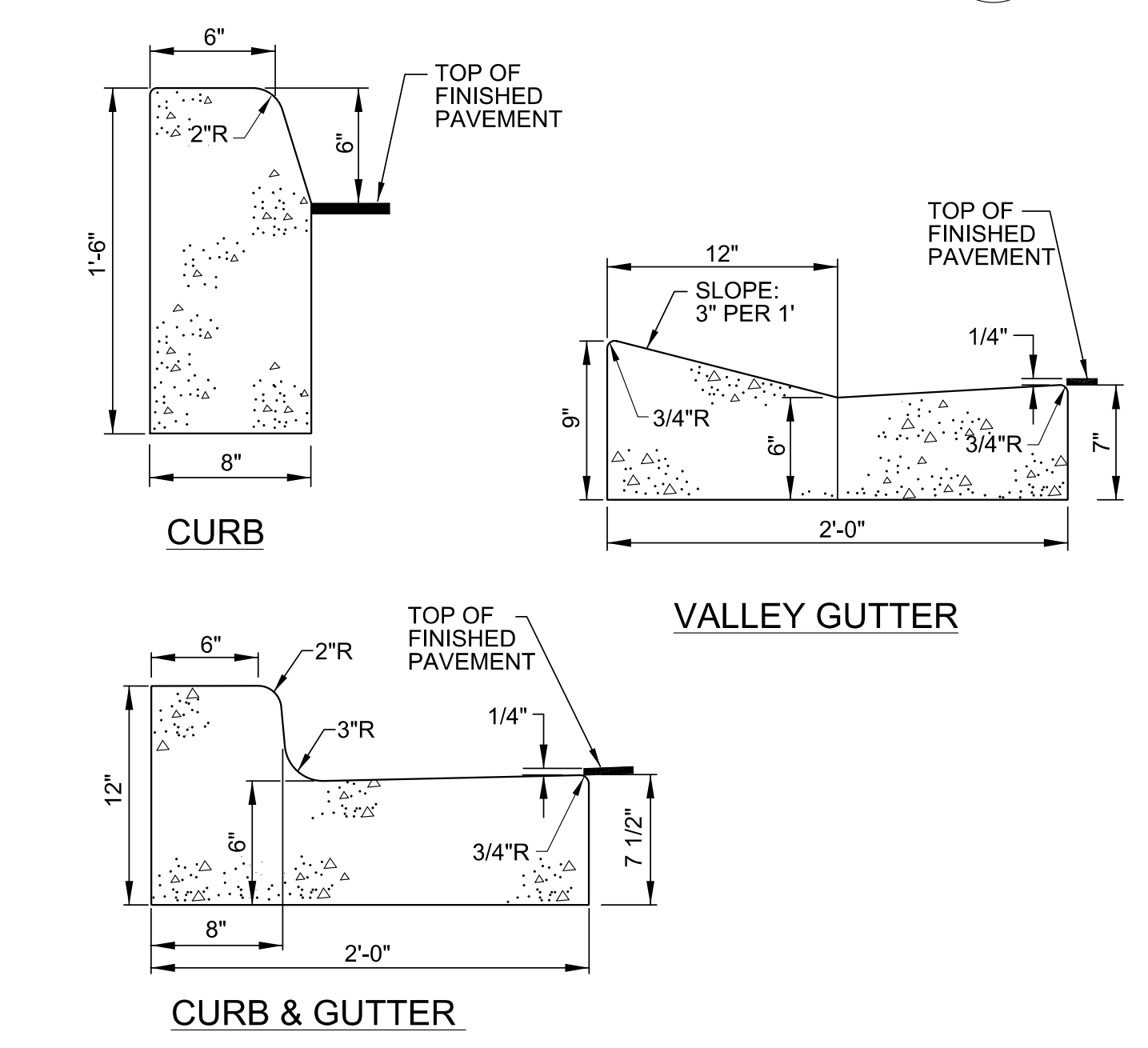
- ALL STATE ROADS WHICH ARE OPEN CUT FOR THE INSTALLATION OF THE FORCE MAIN MUST BE REPAIRED ACCORDING TO THIS DETAIL.
- THE 11.0" BASE COURSE SHALL BE INSTALLED IN TWO (2) LIFTS.

ROAD AND DRIVEWAY PAVEMENT REPAIR DETAIL 2



- NOTES:
- SHAPE BOTTOM OF TRENCH TO FIT BOTTOM QUARTER ON SIDES OF AND BENEATH PIPE. BED ONE-QUARTER THE PIPE OUTSIDE DIAMETER ON THE SIDES OF AND 6" BENEATH PIPE WITH #67 STONE. EXCAVATE UNDER EACH BELL SUFFICIENTLY TO PREVENT ANY LOAD ON BELL.
 - WHERE UNSTABLE SOIL IS ENCOUNTERED, EXCAVATE THE SOIL AS DIRECTED BY THE ENGINEERS AND BACKFILL WITH AT LEAST 8" OF #467 STONE. THE BACKFILL SHALL BE COMPACTED AND SHAPED TO FORM A BED FOR THE PIPE.
 - BACKFILL IN 6" LAYERS AND COMPACT TO 98% STANDARD DENSITY WITHIN ROAD RIGHT-OF-WAYS OR OTHERWISE 90% STANDARD DENSITY AS DETERMINED BY AASHTO TEST METHOD T-99.

BENCHING DETAIL 3



NOTE: CLASS 1 CONCRETE, 3,000 P.S.I. AT 28 DAYS SHALL BE USED FOR CURB REPLACEMENT.

CONCRETE CURB DETAIL 4

DATE: 8/13/2004
TIME: 10:41:50 PM
DRN: P:\60482503\900_Works\916_Utilities_Construction\NF-5021_UC_UC3R.dgn