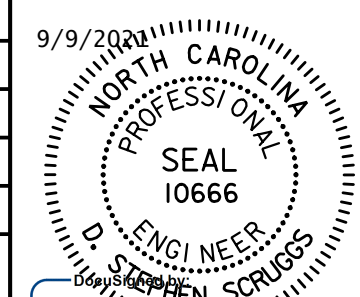


Prepared in the Office of:

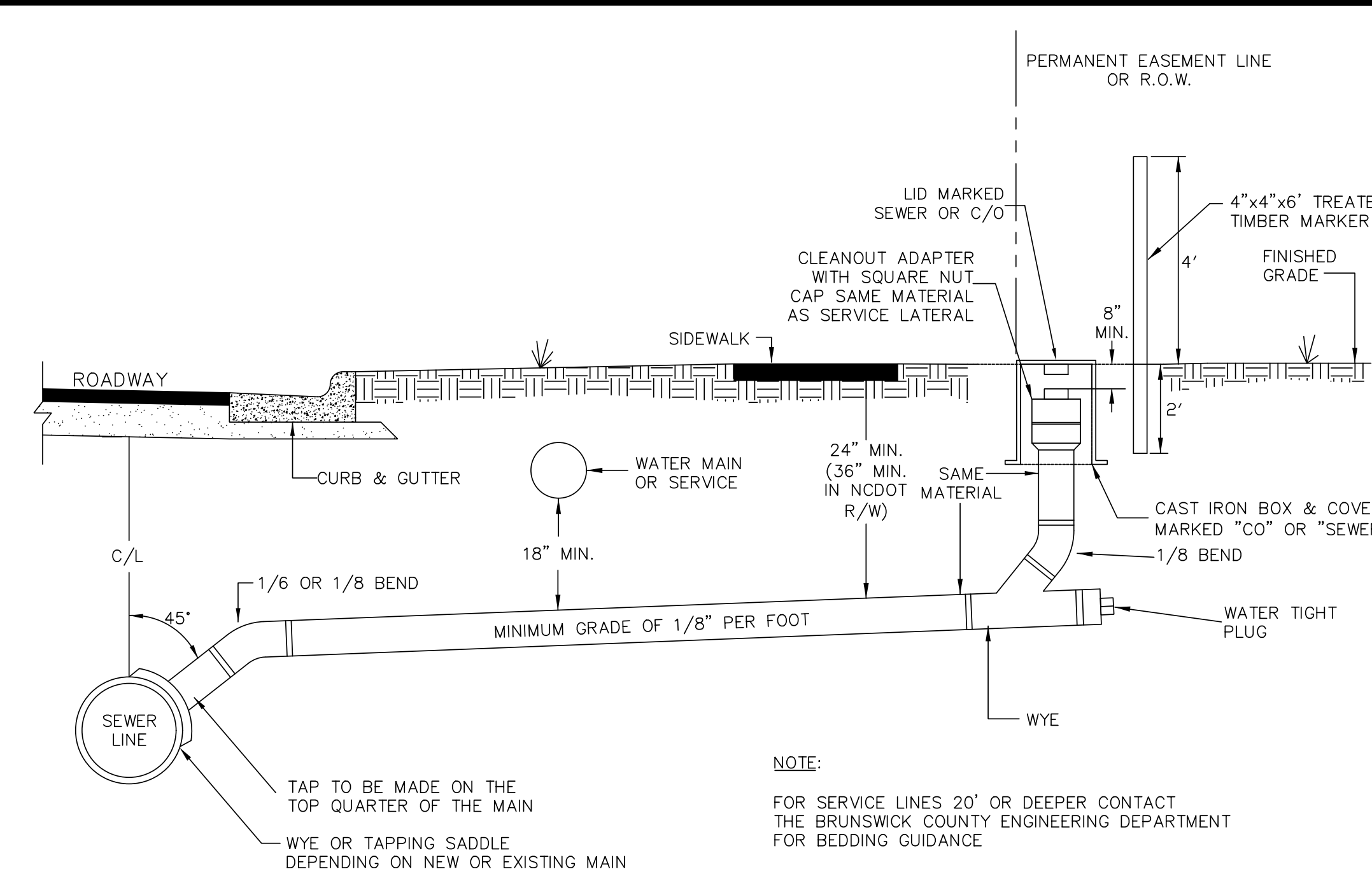
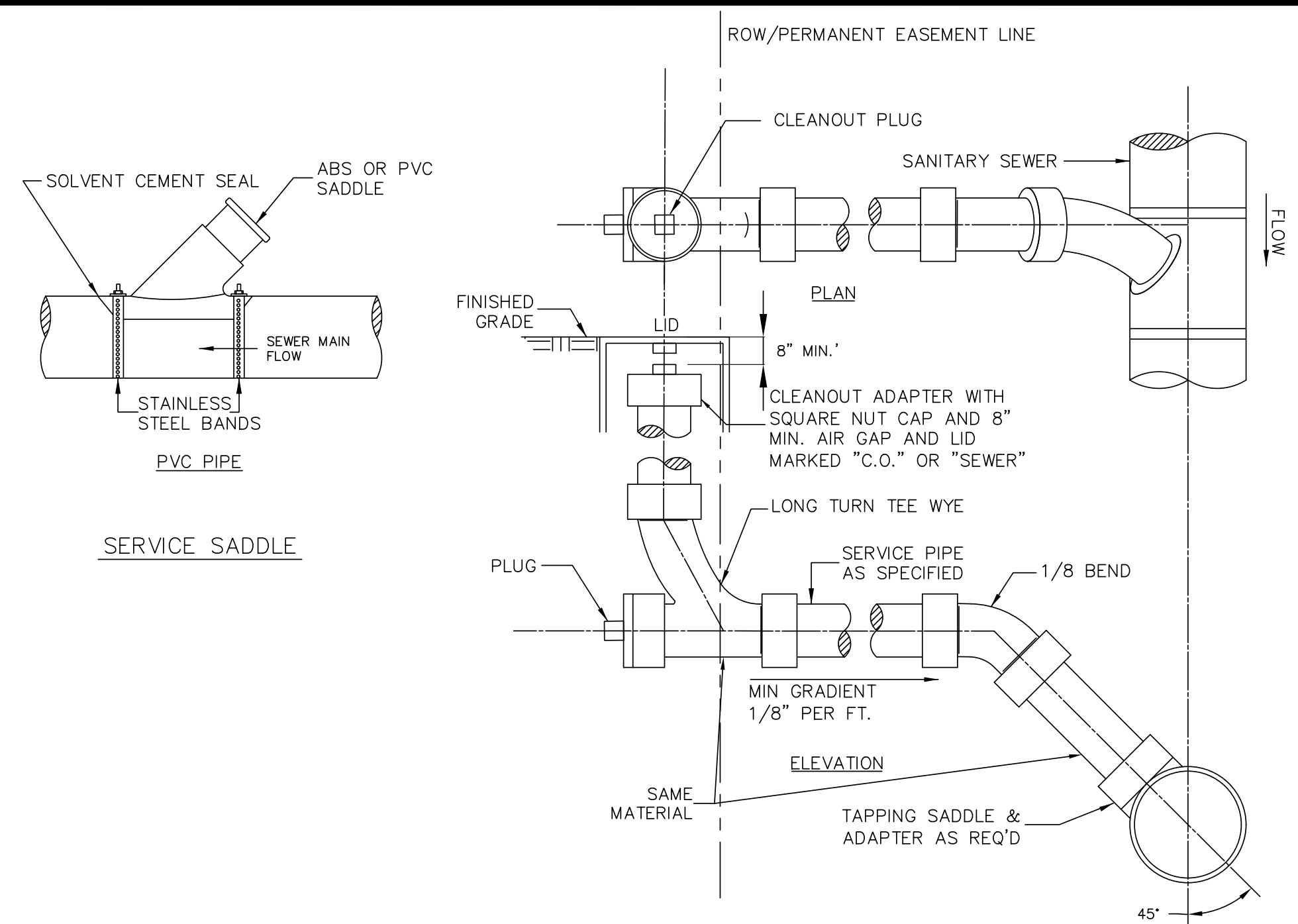


AECOM TECHNICAL SERVICES OF NORTH CAROLINA, INC.
701 CORPORATE CENTER DRIVE, SUITE 475, RALEIGH, NC 27607
919-854-6200 919-854-6259 (fax)
F - 0342

PROJECT REFERENCE NO.	R-5021	SHEET NO.	UC-30
DESIGNED BY:		9/9/2011	
DRAWN BY:			
CHECKED BY:			
APPROVED BY:			
REVISED:			
NORTH CAROLINA DEPARTMENT OF TRANSPORTATION UTILITIES ENGINEERING SEC.		PHONE: (919) 707-6690 FAX: (919) 250-4151	

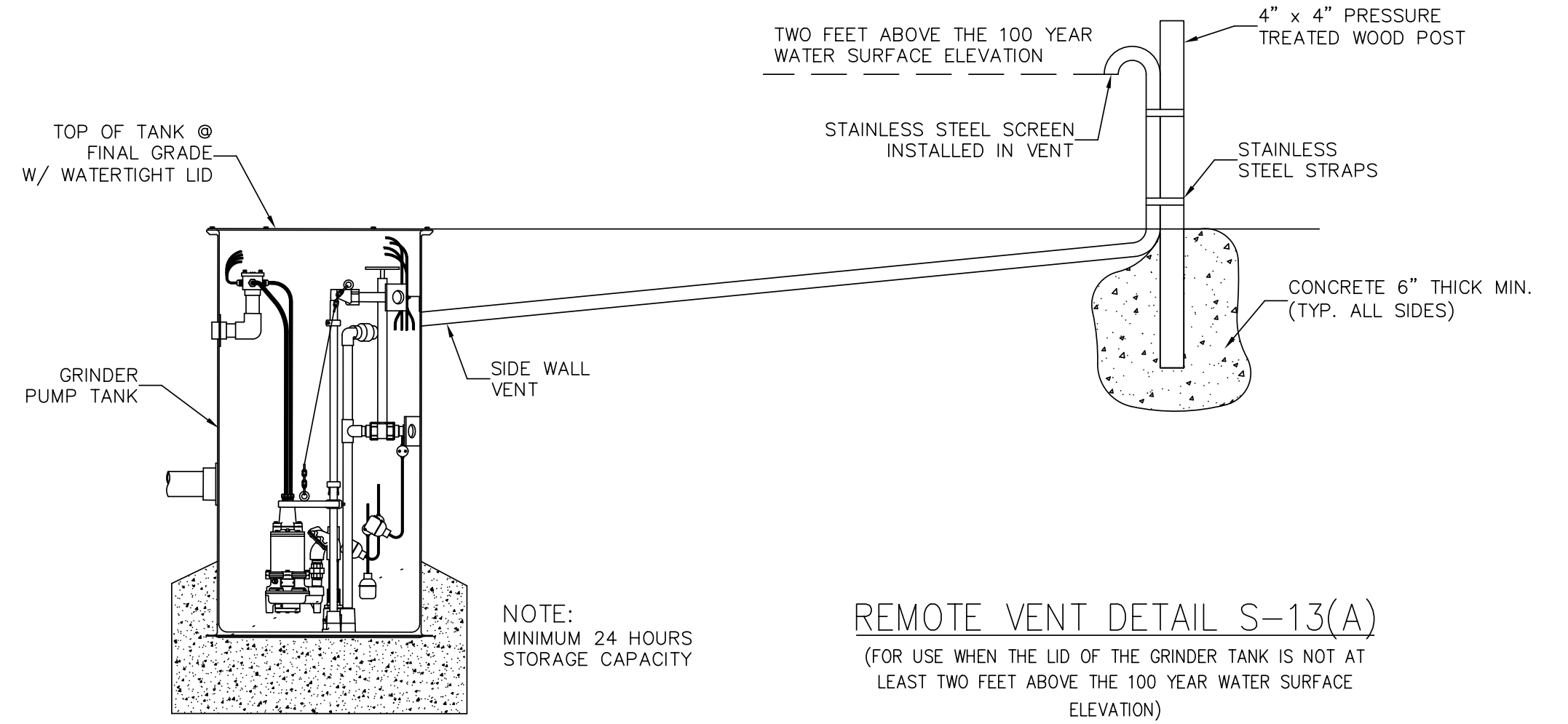
DOCUMENT NOT CONSIDERED FINAL UNLESS ALL SIGNATURES COMPLETED

UTILITY CONSTRUCTION

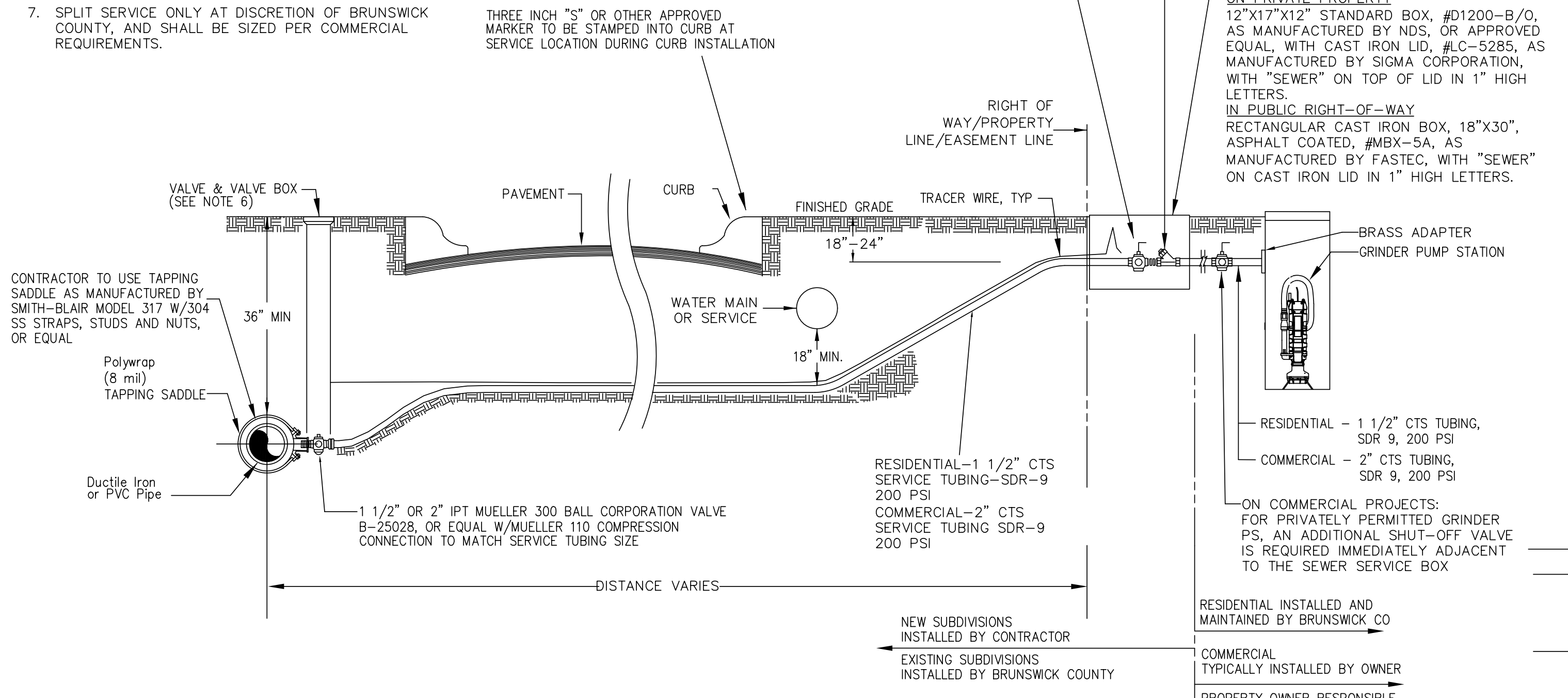


SANITARY SEWER GRAVITY TAPS & SERVICE LATERALS
DETAIL S-11

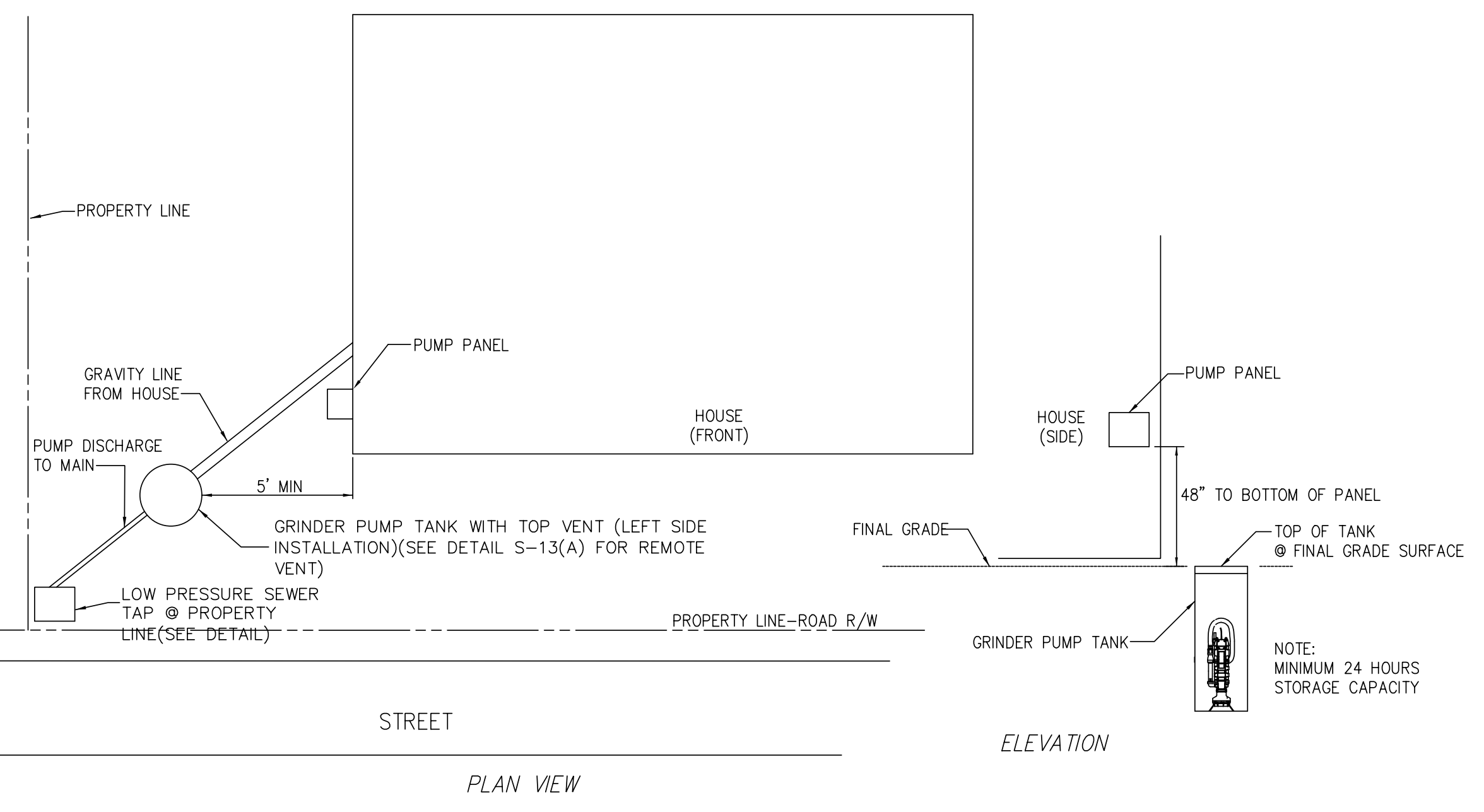
- NOTES:
- ALL TAPS WILL BE MADE IN ACCORDANCE WITH BRUNSWICK COUNTY SPECIFICATIONS AND AWWA GUIDELINE "ANSI/AWWA C600-93" OR LATEST REVISION FOR TAPPING THROUGH POLYETHYLENE ENCASEMENT.
 - ALL MATERIAL TO COMPLY WITH BRUNSWICK COUNTY SPECIFICATIONS.
 - TRACER WIRE SHALL BE INSTALLED FROM THE FORCE MAIN TO THE VALVE BOX.
 - THE HOMEOWNER IS RESPONSIBLE FOR THE GRAVITY CONNECTION FROM THE STRUCTURE TO THE GRINDER PUMP STATION AND FOR THE ELECTRICAL WIRING TO PROVIDE POWER TO THE PUMP PANEL.
 - AT THE DISCRETION OF BRUNSWICK COUNTY, ON SELECT BRUNSWICK COUNTY CAPITAL PROJECTS AND SPECIAL ASSESSMENT DISTRICT PROJECTS, THE VALVE BOX HOUSING, SHUT-OFF VALVE, AND CHECK VALVE MAY BE LOCATED WITHIN THE RIGHT-OF-WAY.
 - VALVE BOX AND LID ARE NOT REQUIRED ON SHORT SIDE TAPS IN NON-PUBLIC R/W.
 - SPLIT SERVICE ONLY AT DISCRETION OF BRUNSWICK COUNTY, AND SHALL BE SIZED PER COMMERCIAL REQUIREMENTS.



REMOTE VENT DETAIL S-13(A)
(FOR USE WHEN THE LID OF THE GRINDER TANK IS NOT AT LEAST TWO FEET ABOVE THE 100 YEAR WATER SURFACE ELEVATION)



LOW PRESSURE SEWER CONNECTION
DETAIL S-12

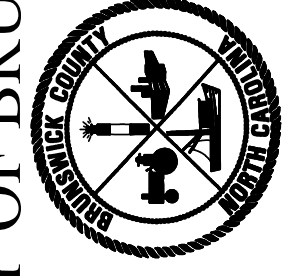


TYPICAL RESIDENTIAL GRINDER PUMP STATION LOCATION
DETAIL S-13

Revisions

1.1 - DATED 3/7/2013	Mod S-12
1.2 - DATED 11/14/2016	Mod S-12
1.3 - DATED 4/11/2018	Mod S-13A
1.4 - DATED 1/23/2019	Mod S-11

COUNTY OF BRUNSWICK



GENERAL SEWER DETAILS
FOR
BRUNSWICK COUNTY
NORTH CAROLINA

Date: 06-28-12
Scale: NTS
Drawn By: JDM
Checked By: WLP