

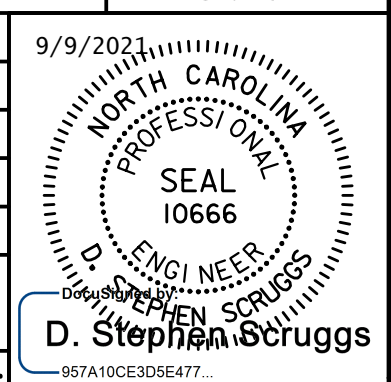
Prepared In the Office of:

AECOM

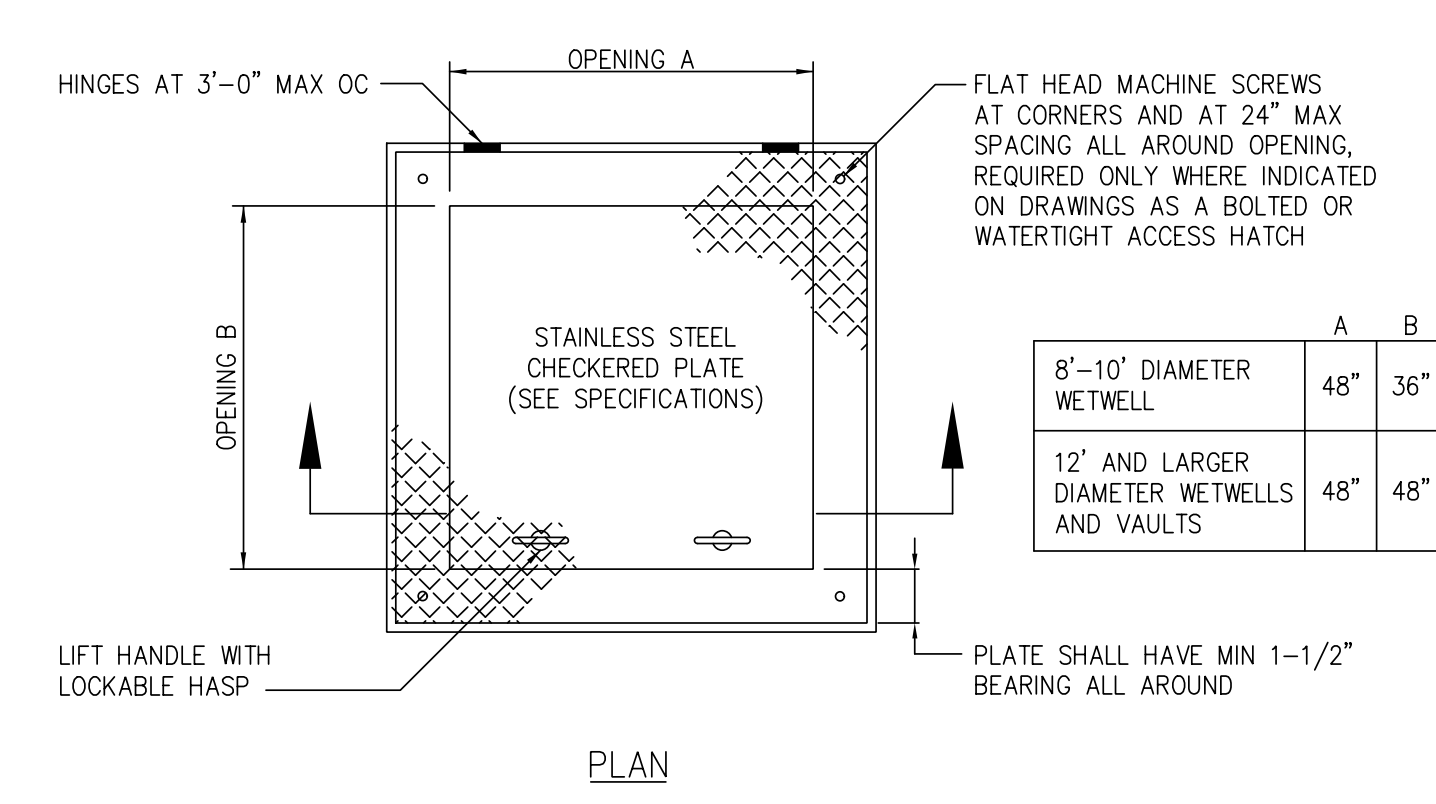
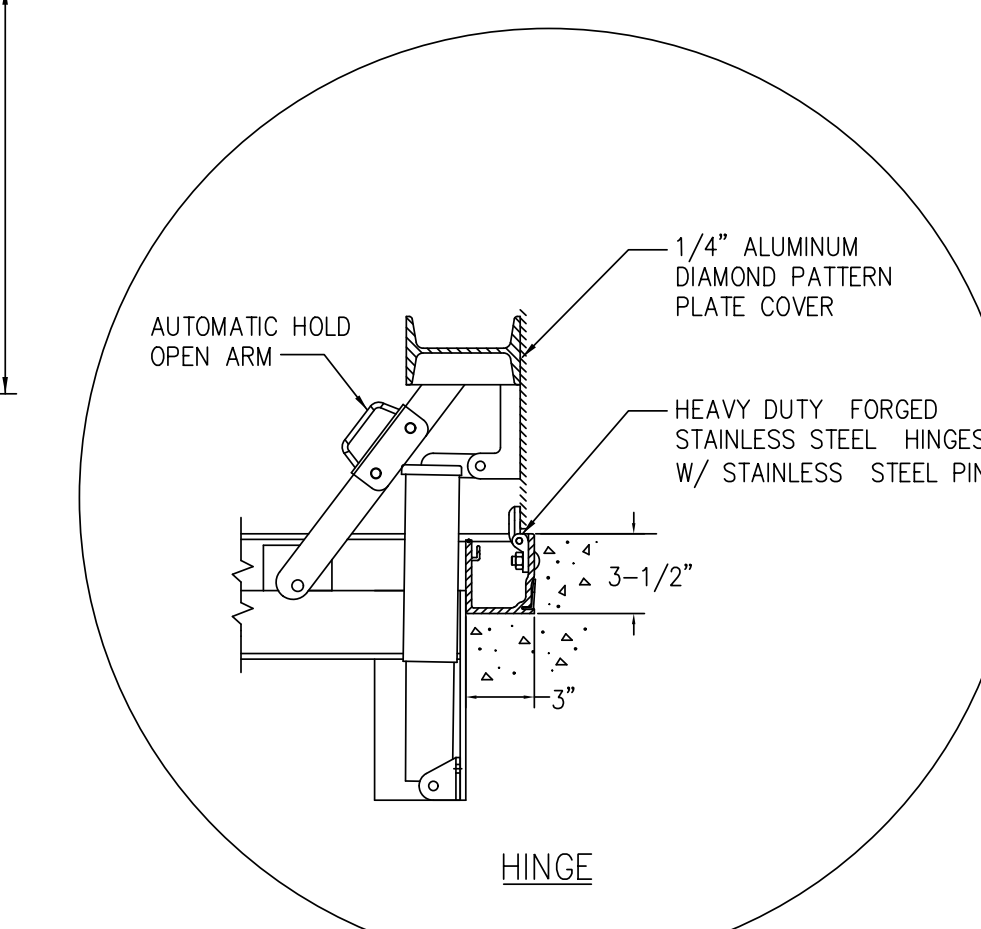
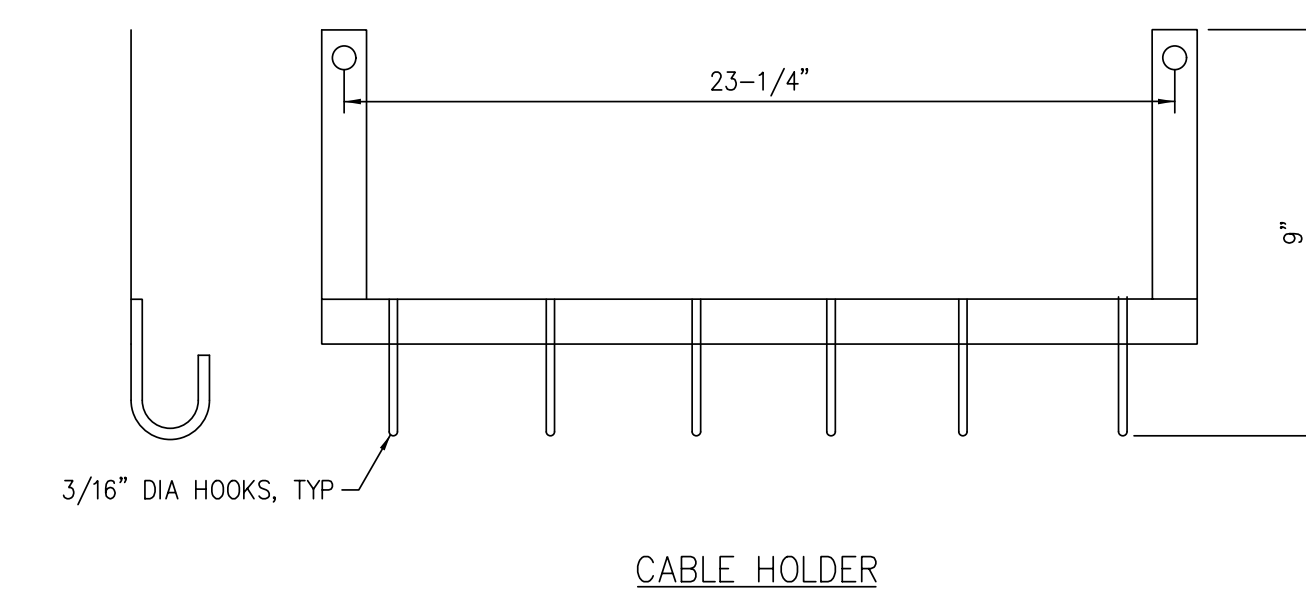
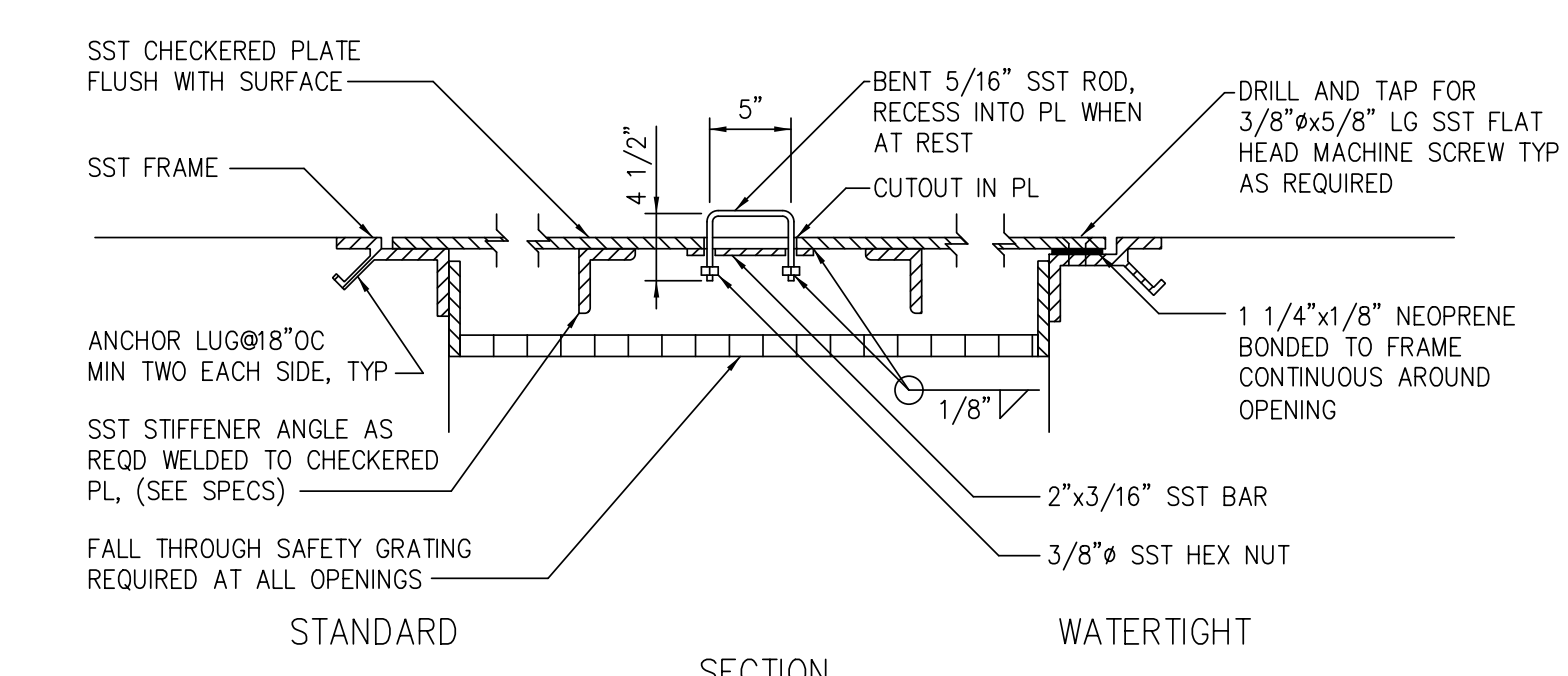
AECOM TECHNICAL SERVICES OF NORTH CAROLINA, INC.
701 CORPORATE CENTER DRIVE, SUITE 475, RALEIGH, NC 27607
919-854-6200 919-854-6259 (fax)
F - 0342

DOCUMENT NOT CONSIDERED FINAL
UNLESS ALL SIGNATURES COMPLETED

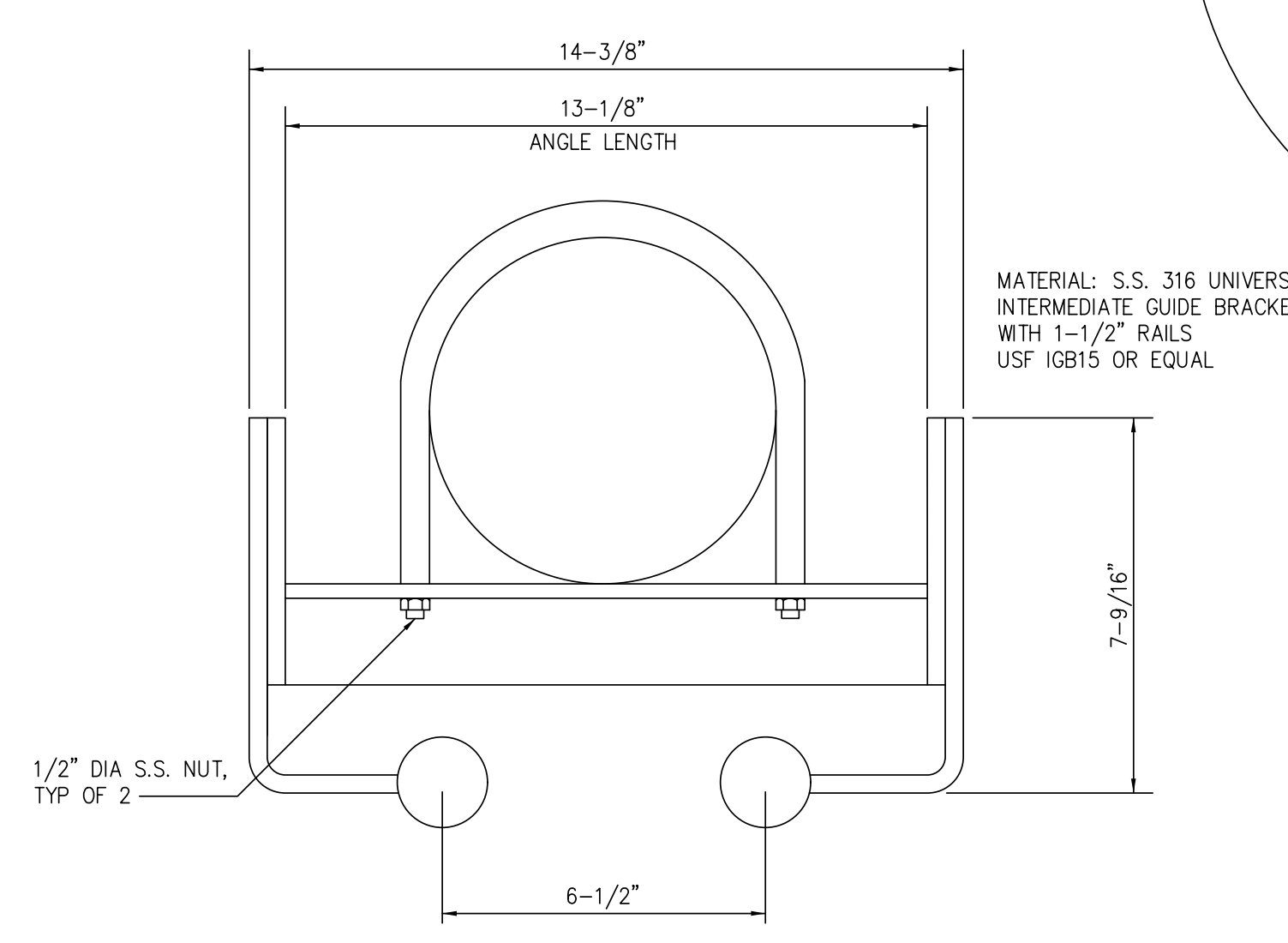
PROJECT REFERENCE NO.	SHEET NO.
R-5021	UC-3K
DESIGNED BY:	9/9/2014
DRAWN BY:	
CHECKED BY:	
APPROVED BY:	
REVISED:	
NORTH CAROLINA DEPARTMENT OF TRANSPORTATION	
UTILITIES ENGINEERING SEC. PHONE: (919) 707-6690 FAX: (919) 250-4151	



UTILITY CONSTRUCTION



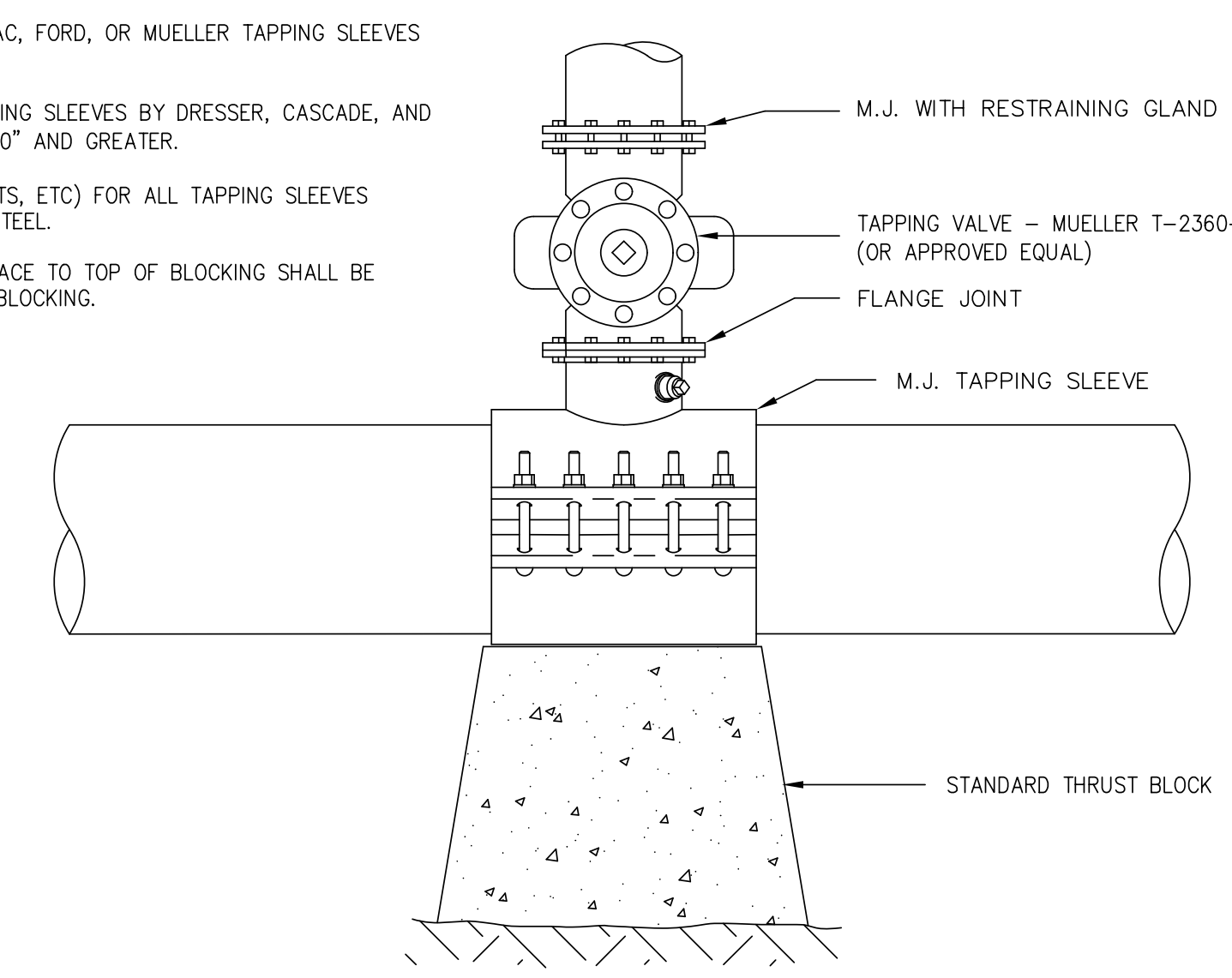
	A	B
8'-10" DIAMETER WETWELL	48"	36"
12' AND LARGER DIAMETER WETWELLS AND VAULTS	48"	48"



ACCESS HATCH
DETAIL WS-17

NOTES:

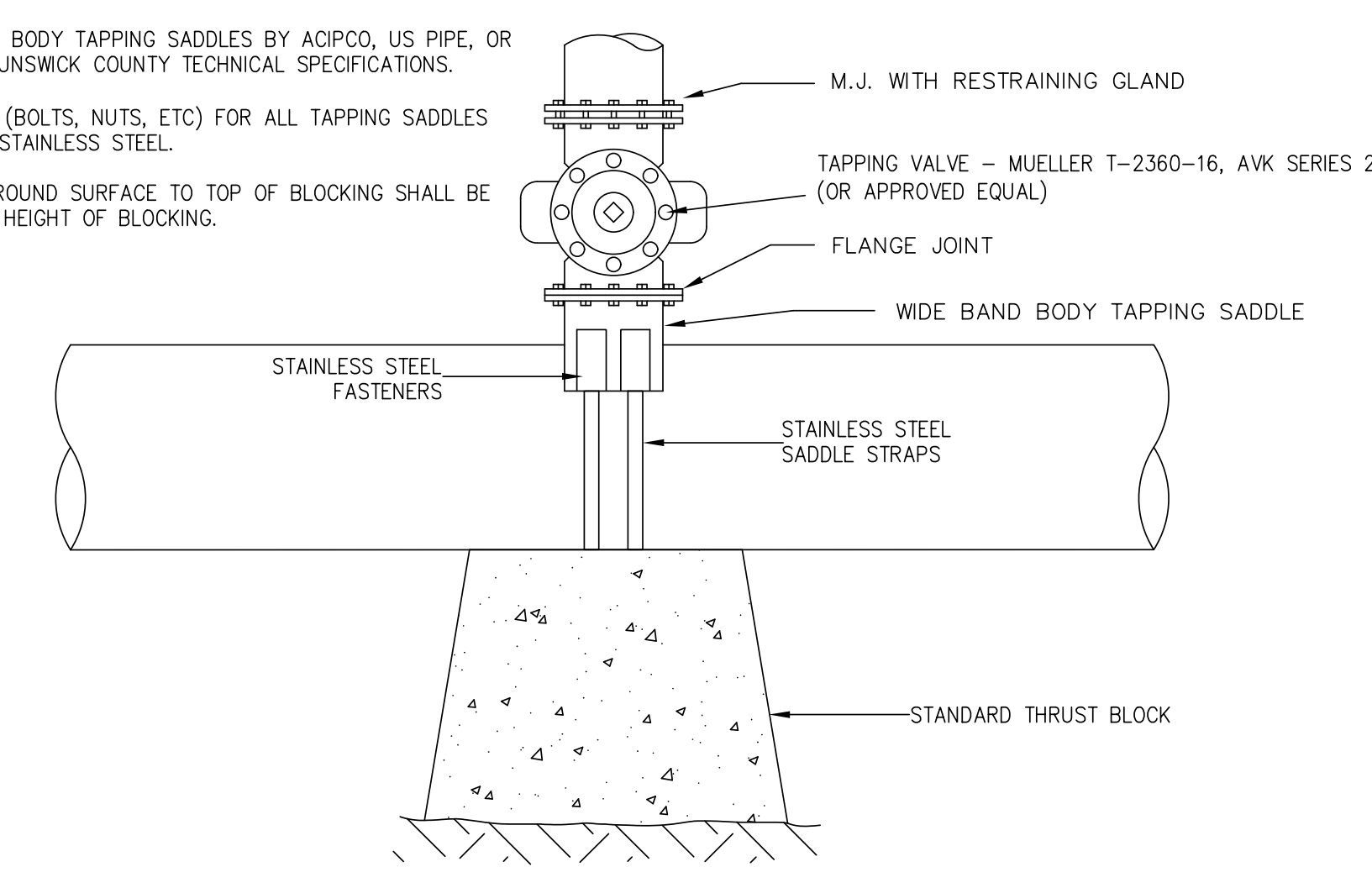
- TAPPING SADDLES ARE NOT ALLOWED WHEN CONNECTING MAIN DIAMETER IS 50% OR LARGER THAN EXISTING MAIN TO BE TAPPED.
- USE STAINLESS STEEL ROMAC, FORD, OR MUELLER TAPPING SLEEVES FOR TAP SIZES 4" - 24".
- USE STAINLESS STEEL TAPPING SLEEVES BY DRESSER, CASCADE, AND JCM FOR TAPS ON MAINS 30" AND GREATER.
- ALL HARDWARE (BOLTS, NUTS, ETC) FOR ALL TAPPING SLEEVES SHALL BE 304 STAINLESS STEEL.
- DEPTH FROM GROUND SURFACE TO TOP OF BLOCKING SHALL BE GREATER THAN HEIGHT OF BLOCKING.



TAPPING SLEEVE & VALVE ASSEMBLY
DETAIL WS-18

NOTES:

- TAPPING SADDLES ARE NOT ALLOWED WHEN CONNECTING MAIN DIAMETER IS 50% OR LARGER THAN EXISTING MAIN TO BE TAPPED.
- USE WIDE BAND BODY TAPPING SADDLES BY ACIPCO, US PIPE, OR EQUAL, PER BRUNSWICK COUNTY TECHNICAL SPECIFICATIONS.
- ALL HARDWARE (BOLTS, NUTS, ETC) FOR ALL TAPPING SADDLES SHALL BE 304 STAINLESS STEEL.
- DEPTH FROM GROUND SURFACE TO TOP OF BLOCKING SHALL BE GREATER THAN HEIGHT OF BLOCKING.



TAPPING SADDLES & VALVE ASSEMBLY
DETAIL WS-19

DATE: 8/13/2014
TIME: 10:39:22 PM
DGN: P:\60482503\900_Works\9165_Jiminy_Construction\NF-5021_UC_UC3K.dgn

COUNTY OF BRUNSWICK

GENERAL WATER & SEWER DETAILS
FOR
BRUNSWICK COUNTY
NORTH CAROLINA

Date: 06-13-12
Scale: NTS
Drawn By: JDM
Checked By: WLP