

Prepared in the Office of:

AECOM

AECOM TECHNICAL SERVICES OF NORTH CAROLINA, INC.
701 CORPORATE CENTER DRIVE, SUITE 475, RALEIGH, NC 27607
919-854-6200 919-854-6259 (fax)
F-0342

PROJECT REFERENCE NO.	R-5021
SHEET NO.	UC-3F
DESIGNED BY:	DIA CORPORATION
DRAWN BY:	
CHECKED BY:	
APPROVED BY:	
REVISED:	

SEAL 10666

D. Stephen Struggs
REGISTERED PROFESSIONAL ENGINEER
STATE OF NORTH CAROLINA

DOCUMENT NOT CONSIDERED FINAL UNLESS ALL SIGNATURES COMPLETED

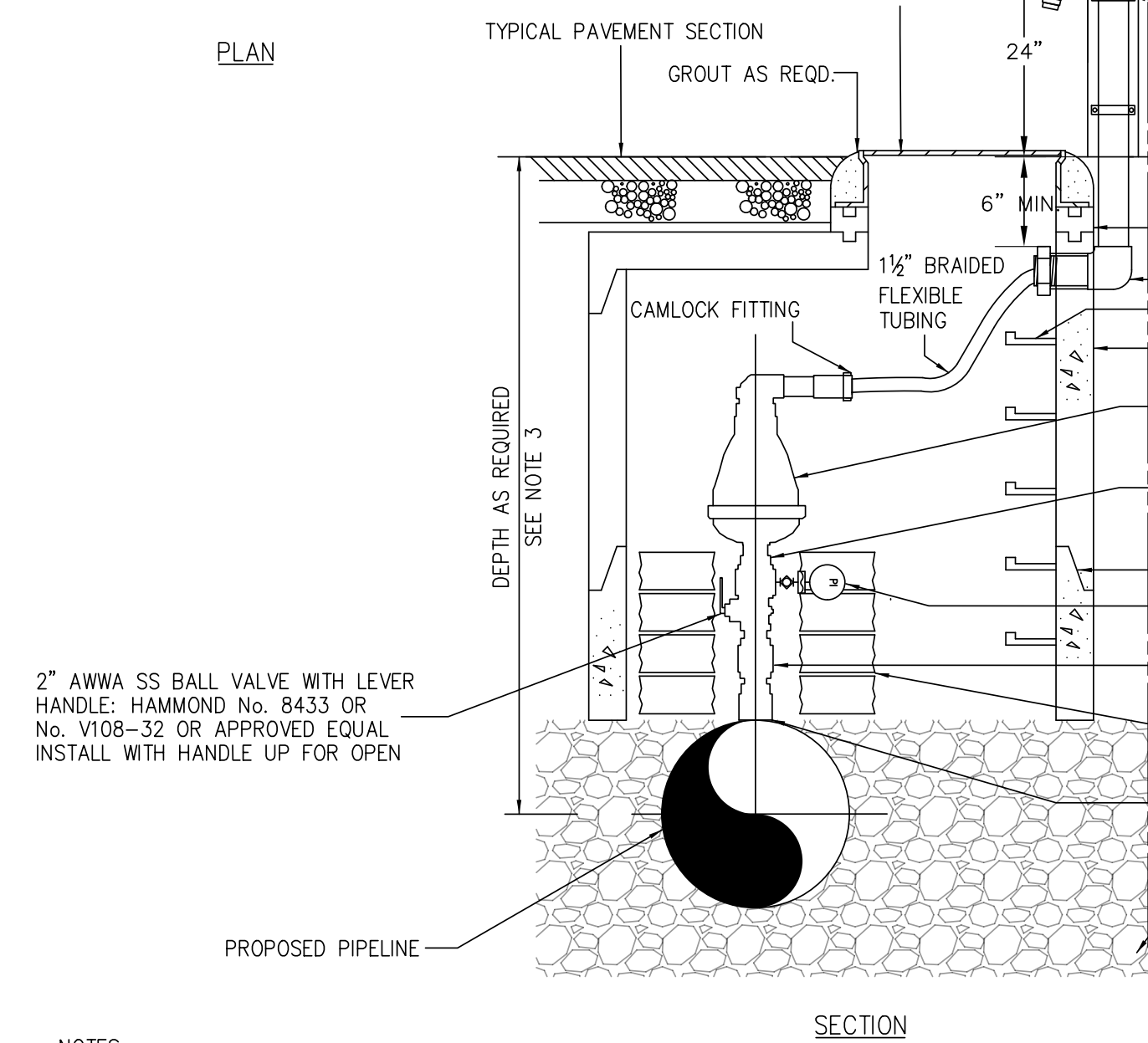
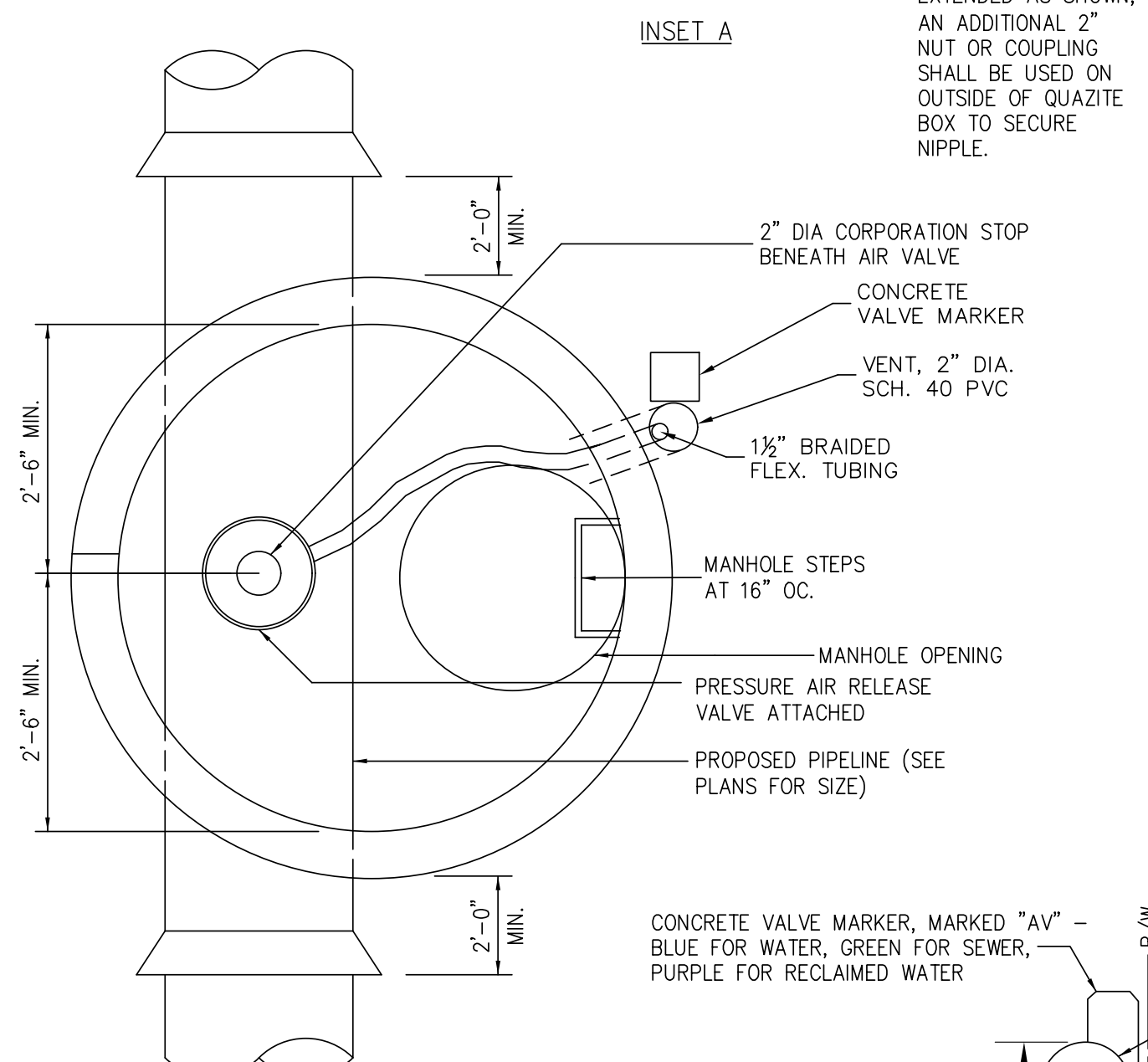
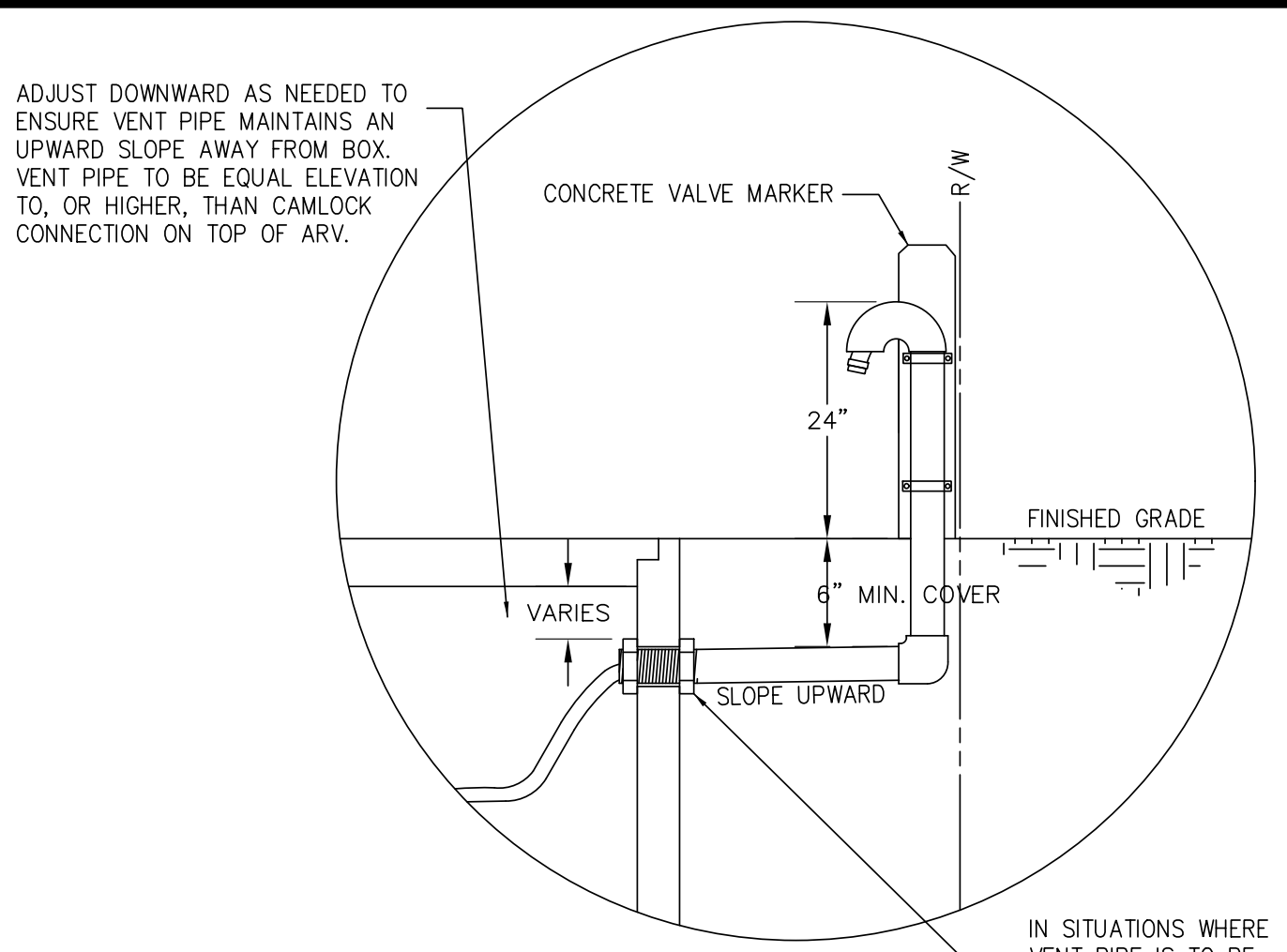
UTILITY CONSTRUCTION

COUNTY OF BRUNSWICK

GENERAL WATER & SEWER DETAILS FOR
BRUNSWICK COUNTY
NORTH CAROLINA

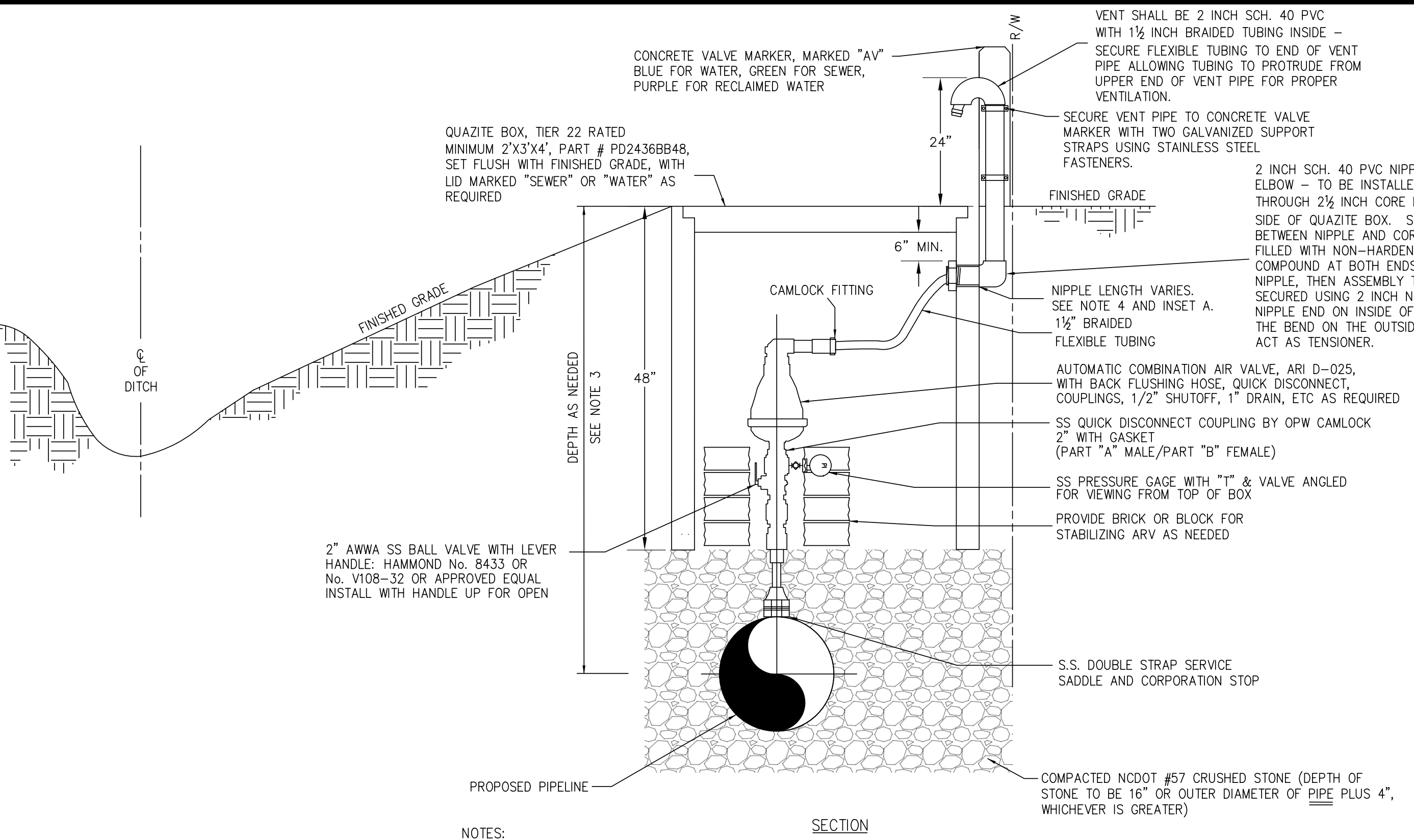
Date: 06-05-12
Scale: NTS
Drawn By: JDM
Checked By: WLP

Revisions	
1.1 - DATED 4/30/2013	Modified WS-1, 2, AND 3
1.2 - DATED 1/16/2014	Modified / Relocated WS-1, 2, AND 3
1.3 - DATED 4/29/2016	Modified WS-2 and WS-3



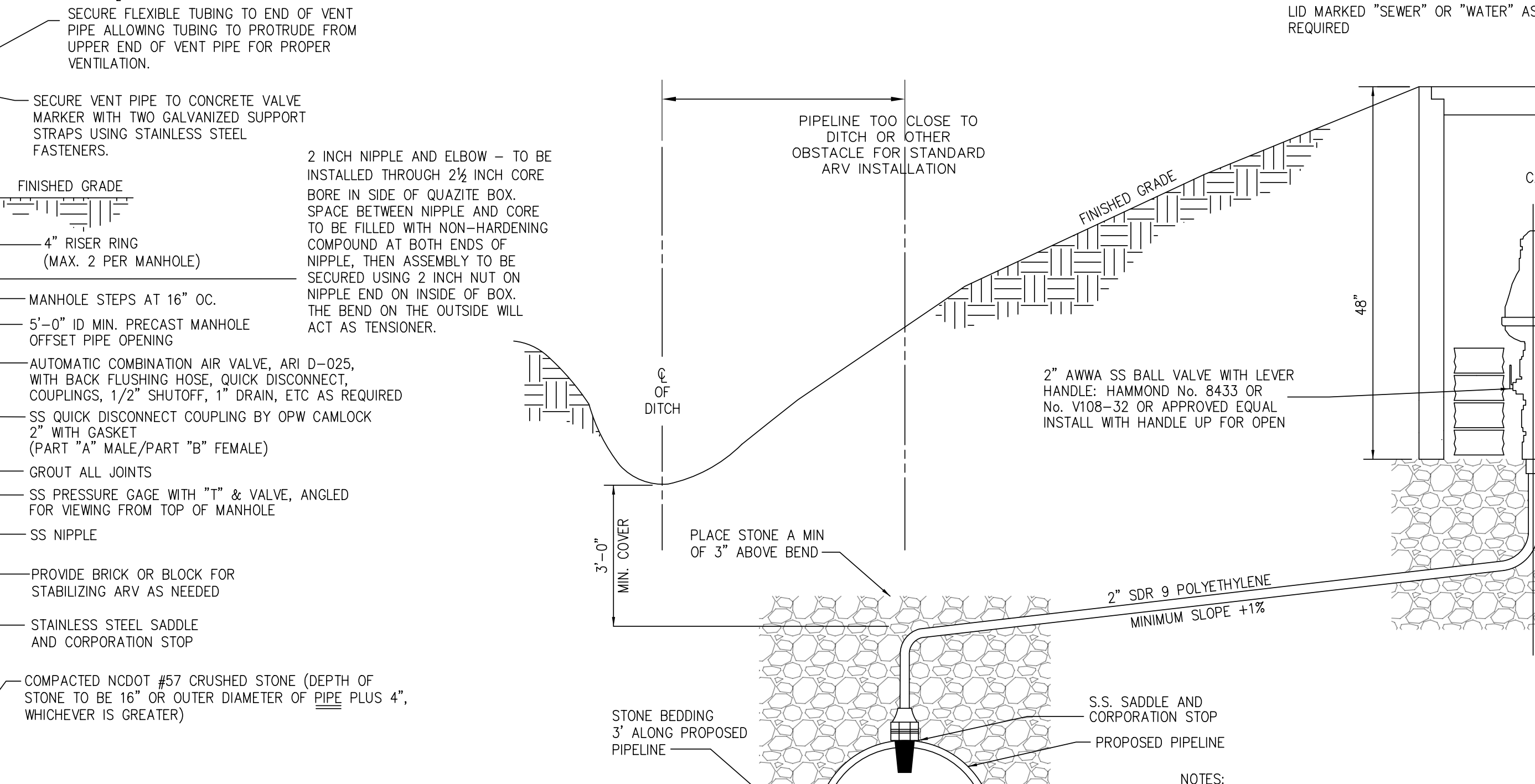
- NOTES:
- USE AN APPROVED JOINT COMPOUND ON ALL THREADED CONNECTIONS.
 - 2" SS NIPPLES SHALL BE USED IF NEEDED.
 - CONTRACTOR SHALL ADJUST PIPELINE PROFILE DOWNWARD IN APPROACH TO ARV IN ORDER TO ATTAIN ADEQUATE DEPTH FOR ARV ASSEMBLY. TRANSITION LENGTH SHALL BE SUFFICIENT TO ENSURE THAT ARV IS LOCATED AT HIGH POINT.
 - SET VALVE MARKER AND VENT STACK AT RIGHT-OF-WAY LINE.

STANDARD MANHOLE AND AIR RELEASE VALVE NON-NCDOT R/W DETAIL WS-2



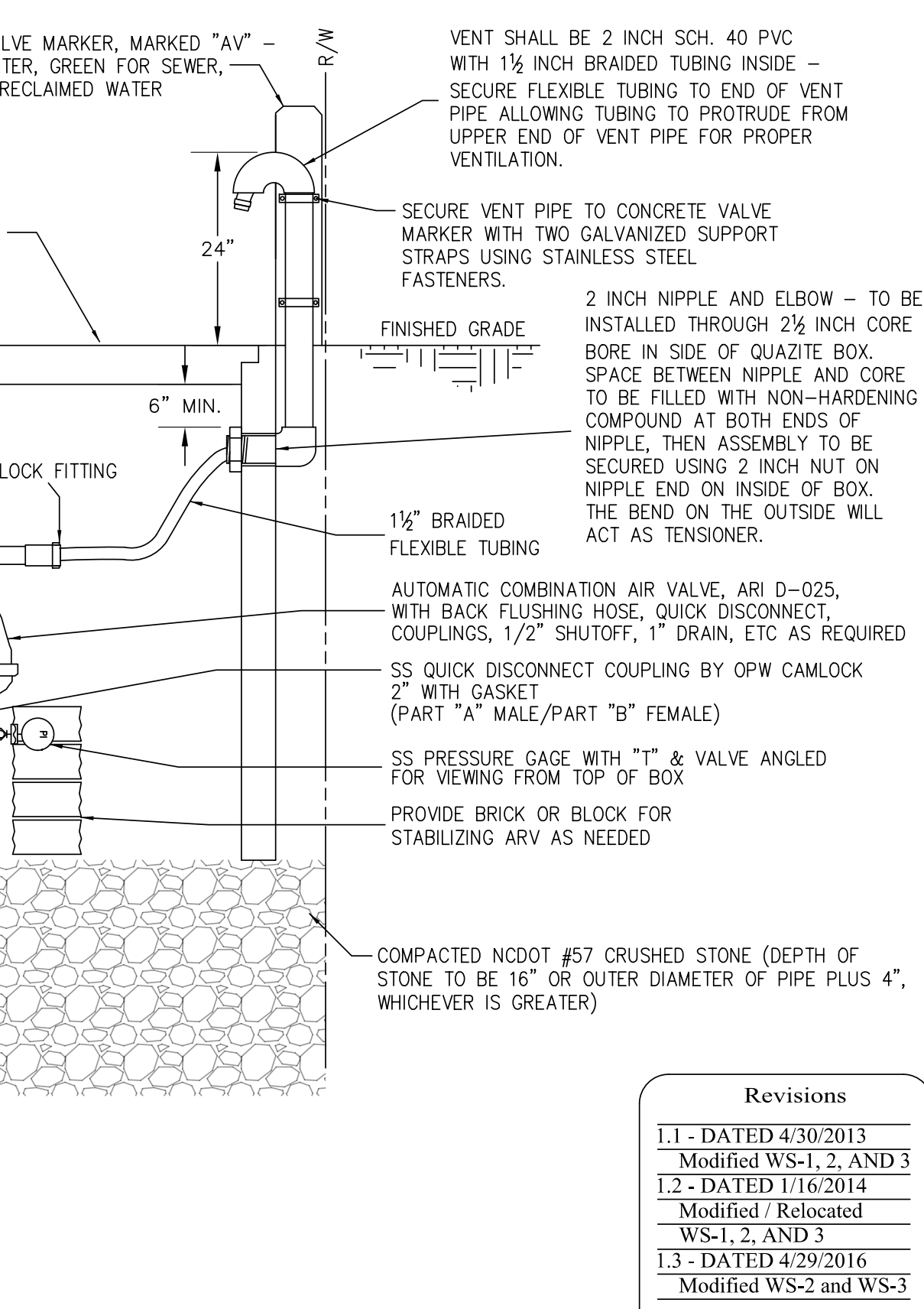
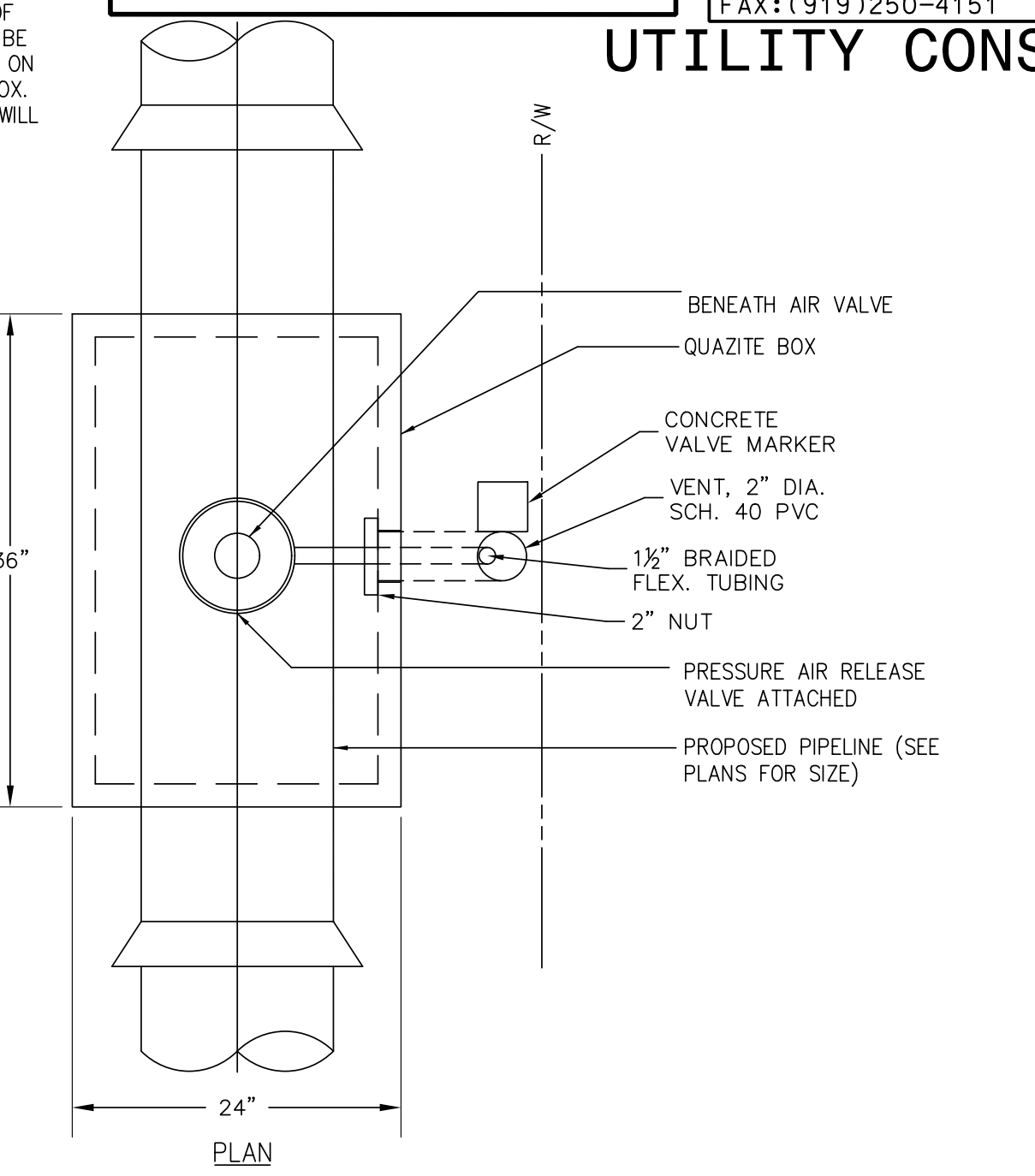
- NOTES:
- USE AN APPROVED JOINT COMPOUND ON ALL THREADED CONNECTIONS.
 - 2" SS NIPPLES SHALL BE USED IF NEEDED.
 - CONTRACTOR SHALL ADJUST PIPELINE PROFILE DOWNWARD IN APPROACH TO ARV IN ORDER TO ATTAIN ADEQUATE DEPTH FOR ARV ASSEMBLY. TRANSITION LENGTH SHALL BE SUFFICIENT TO ENSURE THAT ARV IS LOCATED AT HIGH POINT.
 - SET VALVE MARKER AND VENT STACK AT RIGHT-OF-WAY LINE. EXTEND VENT PIPE AS REQUIRED (SEE INSET A).
 - AT THE DISCRETION OF BRUNSWICK COUNTY, THE VALVE MARKER AND VENT STACK MAY BE LOCATED IMMEDIATELY ADJACENT TO THE QUAZITE BOX IF THE DISTANCE FROM THE QUAZITE BOX TO THE RIGHT-OF-WAY LINE EXCEEDS 10 FEET, OR OBSTACLES OR FINISHED GRADE PREVENT VENT STACK INSTALLATION AT THE RIGHT-OF-WAY LINE.

STANDARD AIR RELEASE VALVE INSTALLATION NCDOT R/W DETAIL WS-1



- NOTES:
- USE AN APPROVED JOINT COMPOUND ON ALL THREADED CONNECTIONS.
 - 2" SS NIPPLES SHALL BE USED IF NEEDED.
 - CONTRACTOR SHALL ADJUST PIPELINE PROFILE DOWNWARD IN APPROACH TO ARV IN ORDER TO ATTAIN ADEQUATE DEPTH FOR ARV ASSEMBLY. TRANSITION LENGTH SHALL BE SUFFICIENT TO ENSURE THAT ARV IS LOCATED AT HIGH POINT.
 - SET VALVE MARKER AND VENT STACK AT RIGHT-OF-WAY LINE.
 - FIELD ADJUST POLY TUBING AS NEEDED TO ENSURE NO CRIMPING AND PROPER VENTILATION.

OFFSET AIR RELEASE VALVE DETAIL INSTALLATION DETAIL WS-3



- NOTES:
- USE AN APPROVED JOINT COMPOUND ON ALL THREADED CONNECTIONS.
 - 2" SS NIPPLES SHALL BE USED IF NEEDED.
 - CONTRACTOR SHALL ADJUST PIPELINE PROFILE DOWNWARD IN APPROACH TO ARV IN ORDER TO ATTAIN ADEQUATE DEPTH FOR ARV ASSEMBLY. TRANSITION LENGTH SHALL BE SUFFICIENT TO ENSURE THAT ARV IS LOCATED AT HIGH POINT.
 - SET VALVE MARKER AND VENT STACK AT RIGHT-OF-WAY LINE.
 - FIELD ADJUST POLY TUBING AS NEEDED TO ENSURE NO CRIMPING AND PROPER VENTILATION.

DATE: 8/13/2013
TIME: 10:36:06 PM
DGN: P:\60482823\900_Works\15_Utility_Construction\NF-5021_UC_UC3E.dgn