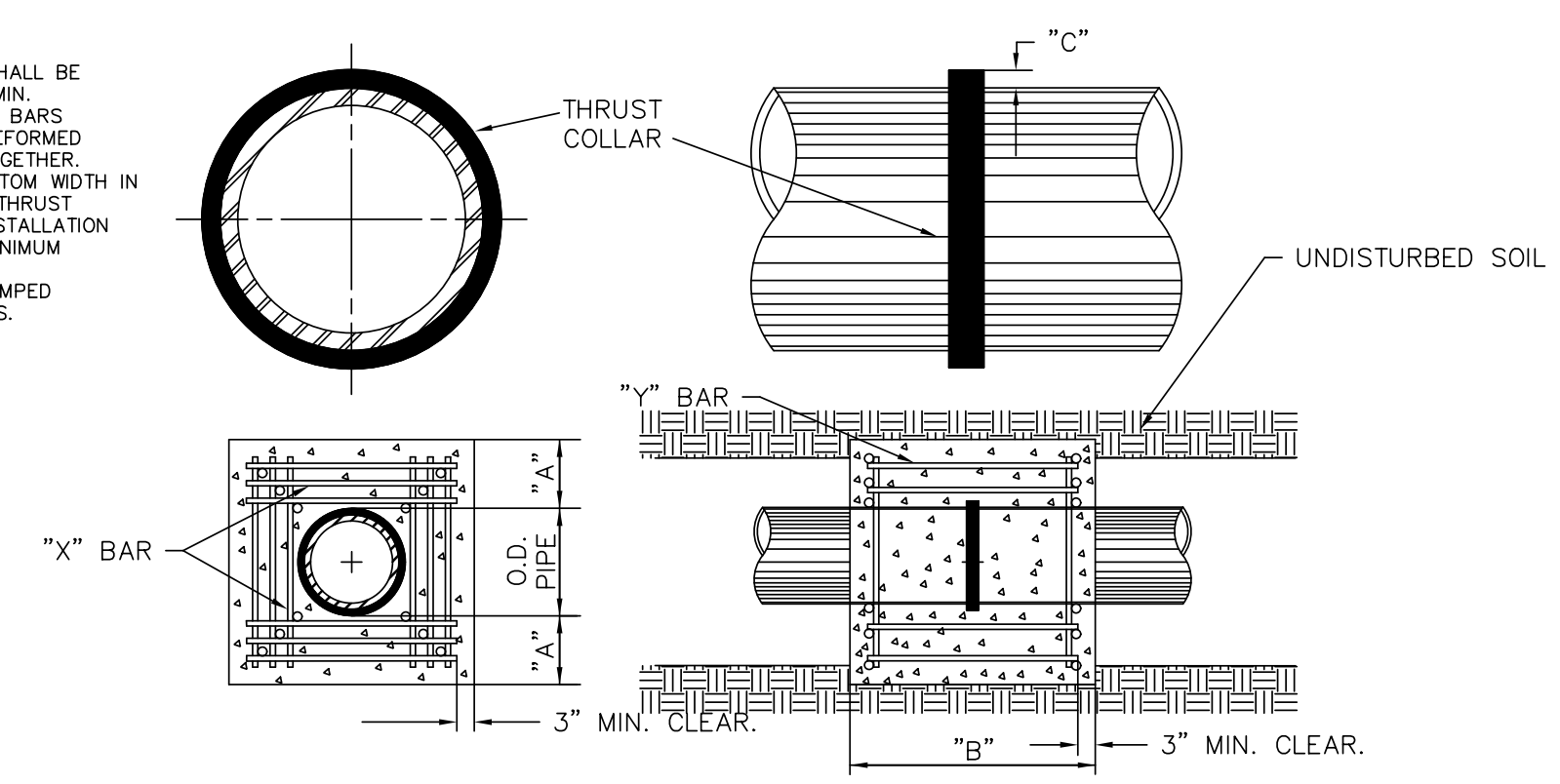


- NOTES:
1. CONCRETE SHALL BE 2500 P.S.I. MIN.
2. REINFORCING BARS SHALL BE DEFORMED AND TIED TOGETHER.
3. TRENCH BOTTOM WIDTH IN VICINITY OF THRUST BLOCK(S) INSTALLATION SHALL BE MINIMUM WIDTH.
4. BACKFILL TAMPED IN 6" LAYERS.

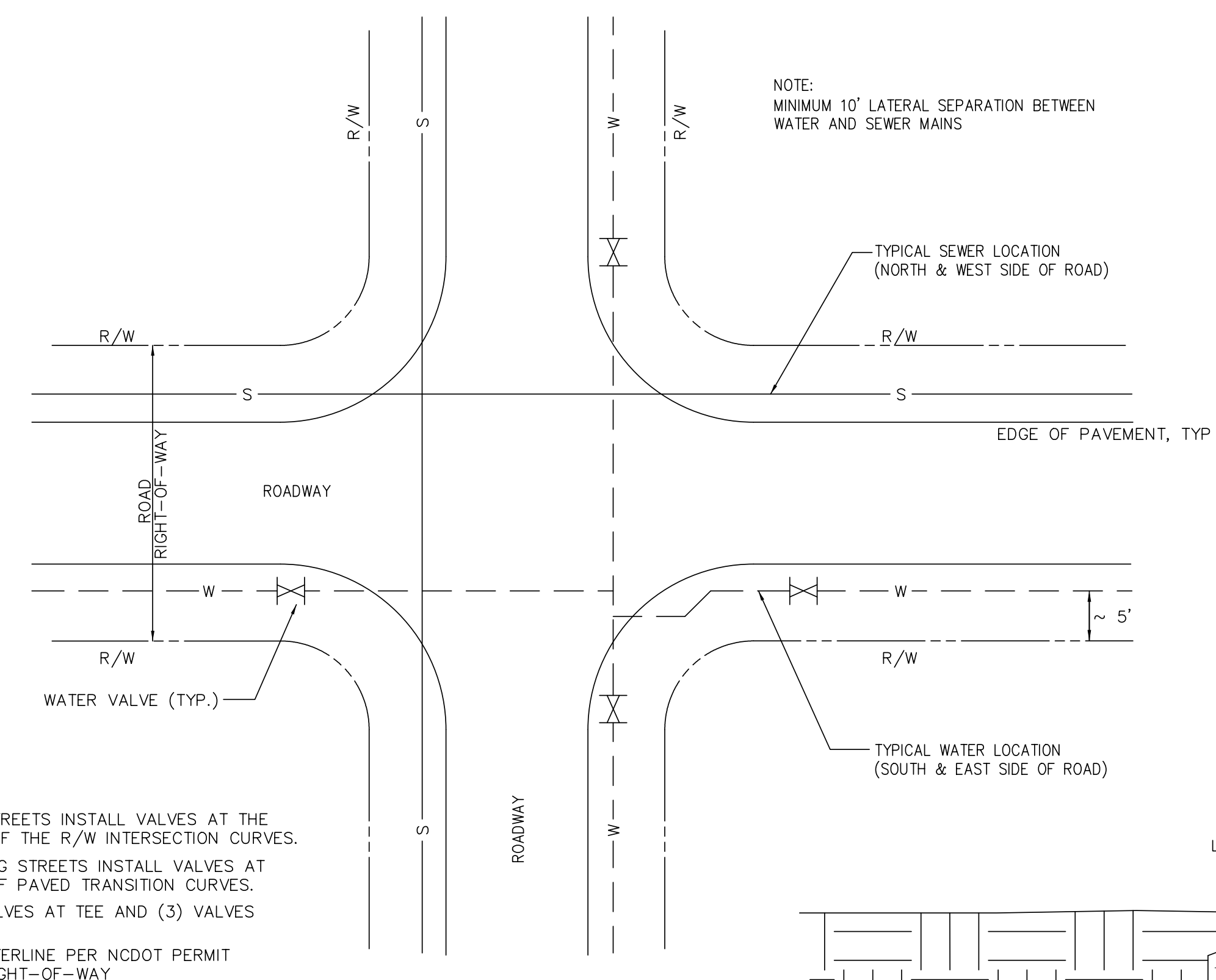


REINFORCING REQUIREMENTS

REINFORCING BAR SCHEDULE						
I.D. PIPE	REBAR SIZE	"X" BAR LENGTH	"X" BAR WGT.	"Y" BAR LENGTH	"Y" BAR WGT.	NO. REQ.
6"-36"	#5	2'-2"+O.D. PIPE	1.043 LBS./FT	1'-1"	1.1 LBS. EA.	X-24, Y-12
48"	#6	3'-0"+O.D. PIPE	1.502 LBS./FT	1'-3"	1.9 LBS. EA.	X-24, Y-12

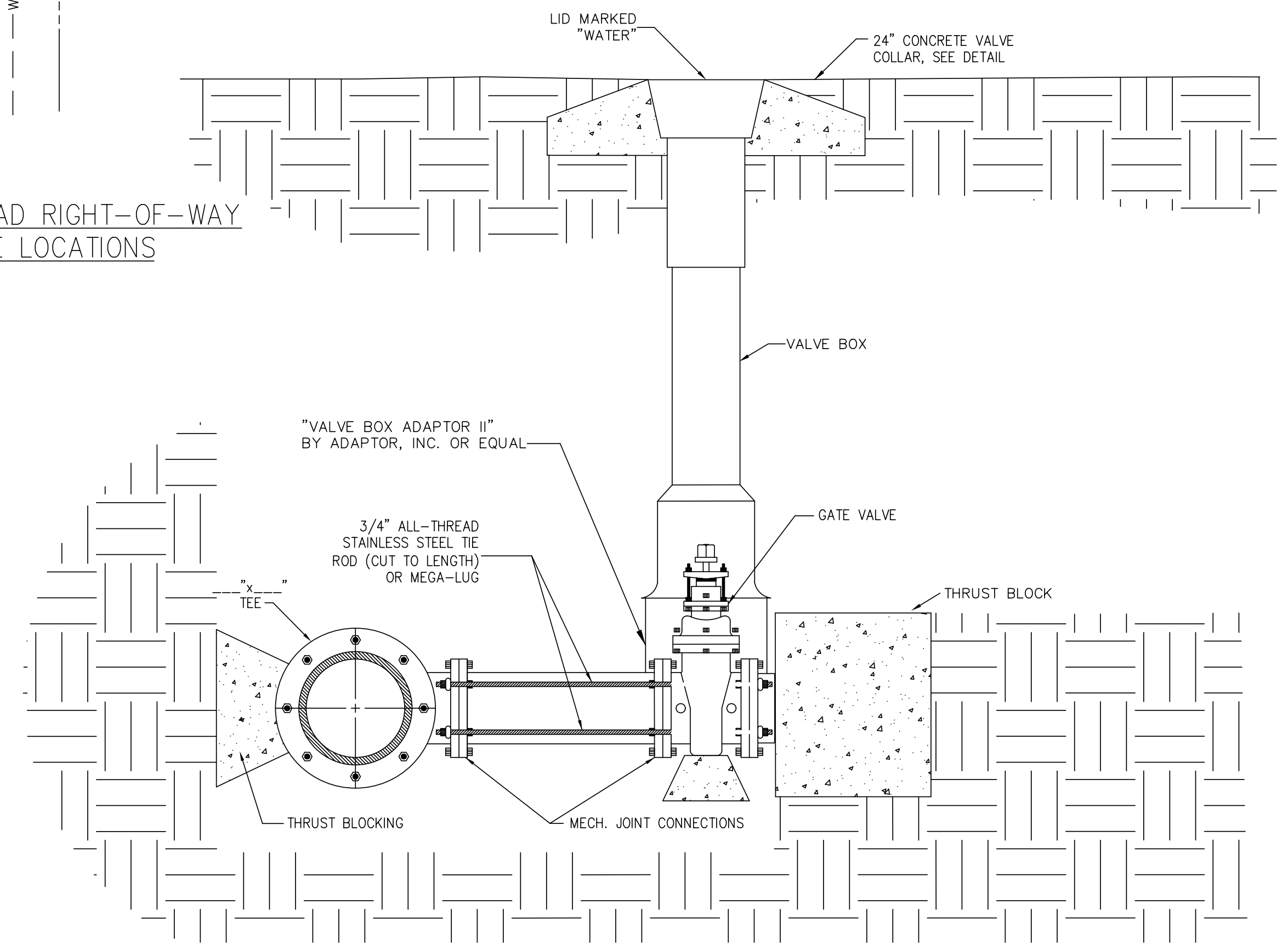
REINFORCING BAR SCHEDULE						
I.D. PIPE	"A"	"B"	"C" - 6"-16", 20"-24", 30"-36", 48"			
6"-36"	1'-4"	1'-7"	2'	3'	4'	6"
48"	1'-8"	1'-9"				

THRUST COLLAR FOR WATER MAINS
DETAIL W-12



- FOR NEW STREETS INSTALL VALVES AT THE TANGENTS OF THE R/W INTERSECTION CURVES.
- FOR EXISTING STREETS INSTALL VALVES AT THE ENDS OF PAVED TRANSITION CURVES.
- USE (2) VALVES AT TEE AND (3) VALVES AT A CROSS
- INSTALL WATERLINE PER NCDOT PERMIT IN NCDOT RIGHT-OF-WAY

PLACEMENT OF UTILITIES IN ROAD RIGHT-OF-WAY
AND INTERSECTION VALVE LOCATIONS
DETAIL W-13



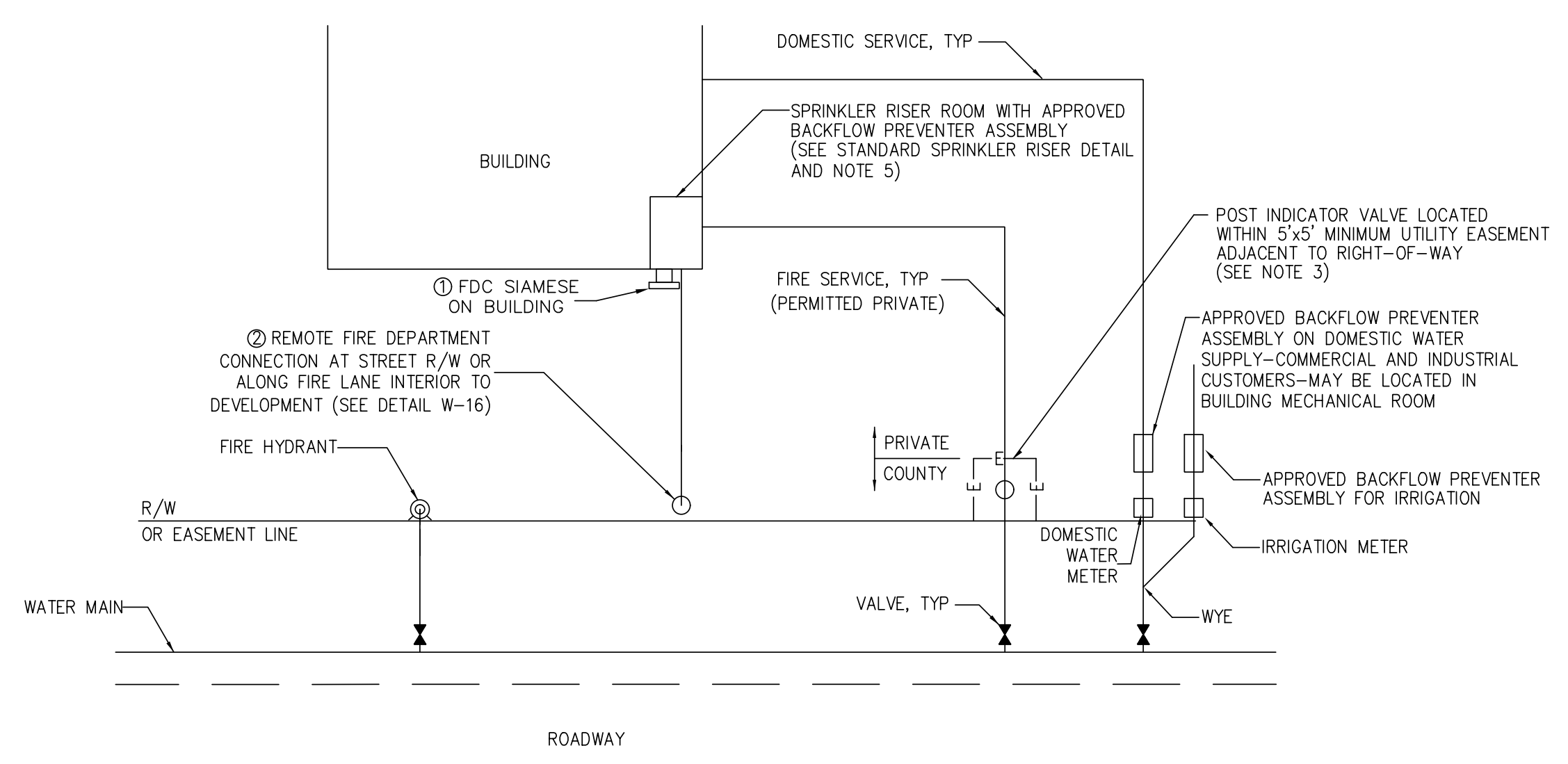
- NOTES:
- CONCRETE SHALL NOT CONTACT BOLTS OR ENDS OF MECHANICAL FITTINGS.
 - ALL TIE RODS AND NUTS TO BE STAINLESS STEEL.
 - LENGTH OF PIPE SHALL BE MINIMUM NEEDED TO INSTALL FITTINGS. VALVE SHALL BE BOLTED DIRECTLY TO TEE WHENEVER POSSIBLE.

ROD REQUIREMENTS	
BRANCH SIZE	NO. OF RODS
4"	2 EA.
6"	2 EA.
8"	4 EA.
12"	4 EA.
16"	6 EA.
20"	6 EA.
24"	6 EA.

BRANCH STUB-OUT FOR FUTURE CONNECTION
(6-INCH DIA AND LARGER MAIN)
DETAIL W-14

- NOTES:

- NO FIRE HYDRANTS ARE PERMITTED ON PRIVATE FIRE SERVICE LINES.
- FIRE SERVICE LINES WITH FIRE HYDRANT(S) SHALL BE PUBLIC WATER MAINS LOCATED WITHIN A RECORDED PUBLIC UTILITY EASEMENT. THE POST INDICATOR VALVE SHALL BE LOCATED AFTER THE MOST DOWNSTREAM HYDRANT ON THE MAIN.
- FIRE SERVICE LINES WITH HYDRANTS SHALL BE 6" MINIMUM DIAMETER.
- POST INDICATOR VALVES FOR PRIVATE FIRE SERVICE LINES SHALL BE LOCATED AS SHOWN.
- RPZ MAY BE LOCATED IN BUILDING IF BUILDING IS LESS THAN 200 LINEAR FEET FROM THE WATER MAIN SERVING THE BUILDING.
- FIRE HYDRANT REQUIRED WITHIN 100' MAX OF FDC OR AS APPROVED OTHERWISE BY THE FIRE MARSHALL.
- FDC MAY BE REQUIRED TO BE A 5" STORZ WITH 30 DEGREE FIXED ELBOW WITH KNOX LOCKING CAPS AS REQUIRED BY THE FIRE MARSHALL.
- A 5" STORZ CONVERSION KIT WILL BE REQUIRED ON ALL NEW FIRE HYDRANTS AND EXISTING FIRE HYDRANTS HAVING NST THREADS WITHIN 1,000 FEET (VIA A FIRE DEPARTMENT HOSE LAY METHOD) OF NEW COMMERCIAL BUILDINGS AND MULTI-FAMILY BUILDING OCCUPANCIES AND ADDITIONS, CHANGE OF USE OR RENOVATIONS TO EXISTING COMMERCIAL OCCUPANCY BUILDINGS PER THE COUNTY FIRE PREVENTION ORDINANCE.



LOCATION SCHEMATIC FOR FIRE SERVICE-DOMESTIC & IRRIGATION
DETAIL W-14

DATE: 8/13/2011
TIME: 10:35:43 PM
DGN: P:\6048203\900_Works\916_Jiminy_Construction\F-5021_UC_UC3D.dgn