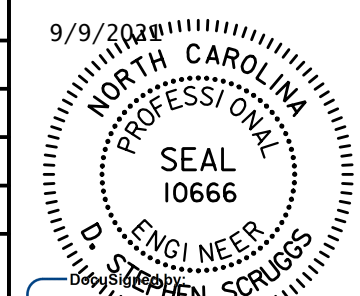


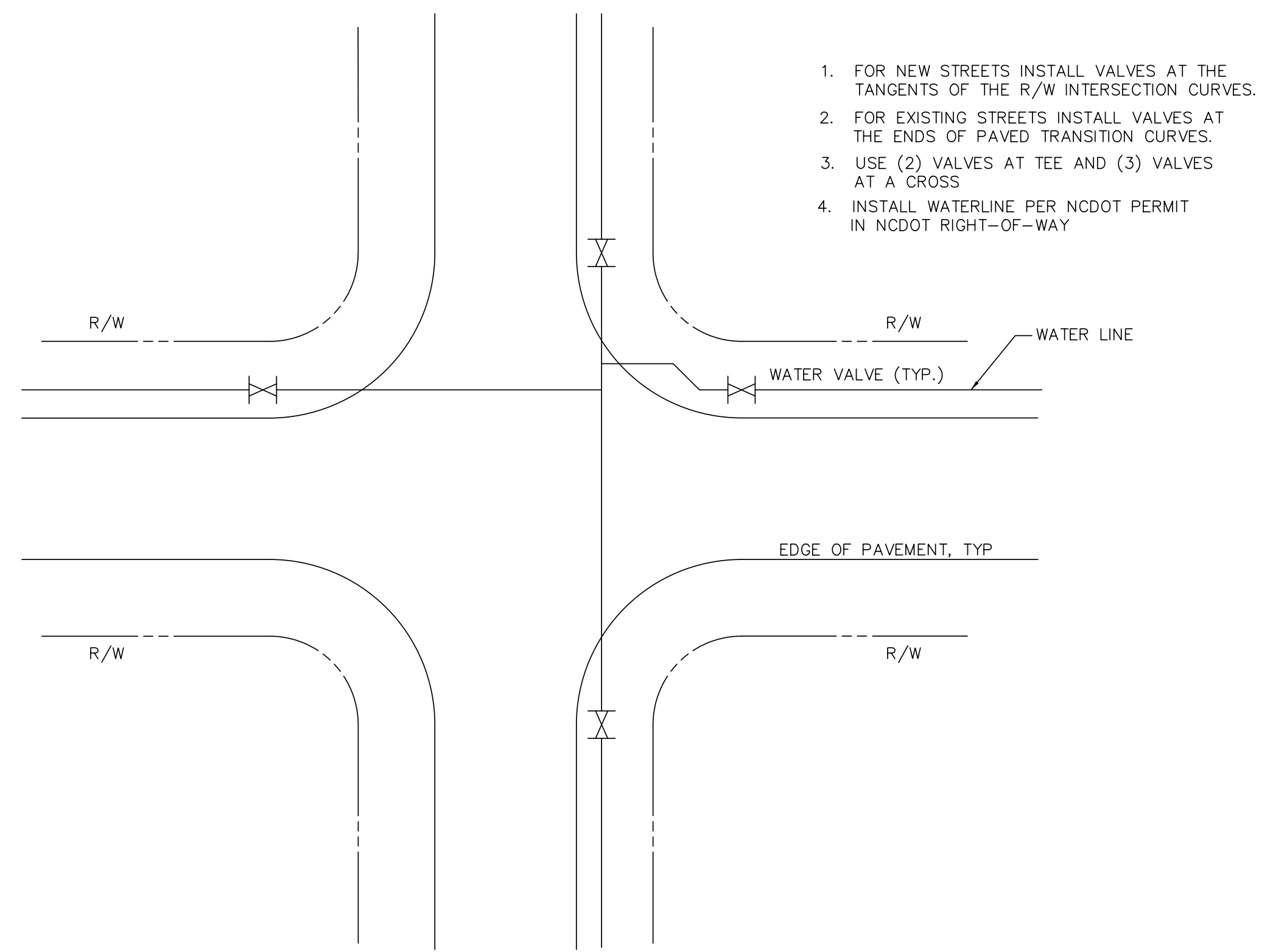
Prepared In the Office of:  
**AECOM**  
 AECOM TECHNICAL SERVICES OF NORTH CAROLINA, INC.  
 701 CORPORATE CENTER DRIVE, SUITE 475, RALEIGH, NC 27607  
 919-854-6200 919-854-6259 (fax)  
 F - 0342

PROJECT REFERENCE NO.	SHEET NO.
R-5021	UC-3B
DESIGNED BY:	9/9/2018
DRAWN BY:	
CHECKED BY:	
APPROVED BY:	
REVISED:	
NORTH CAROLINA DEPARTMENT OF TRANSPORTATION UTILITIES ENGINEERING SEC. PHONE: (919) 707-6690 FAX: (919) 250-4151	



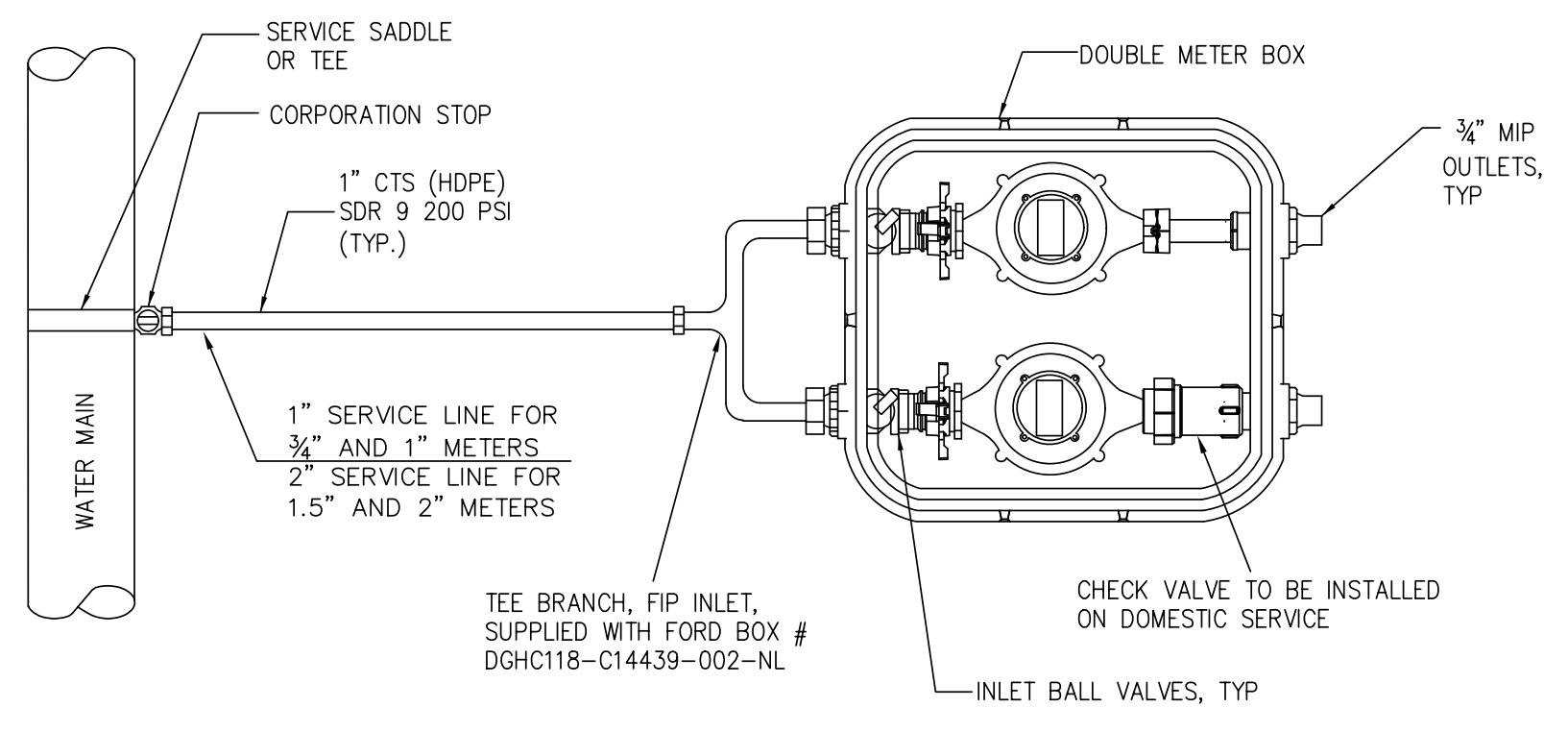
**DOCUMENT NOT CONSIDERED FINAL  
 UNLESS ALL SIGNATURES COMPLETED**

**UTILITY CONSTRUCTION**



**INTERSECTION VALVE LOCATIONS  
 DETAIL W-5**

1. FOR NEW STREETS INSTALL VALVES AT THE TANGENTS OF THE R/W INTERSECTION CURVES.
2. FOR EXISTING STREETS INSTALL VALVES AT THE ENDS OF PAVED TRANSITION CURVES.
3. USE (2) VALVES AT TEE AND (3) VALVES AT A CROSS
4. INSTALL WATERLINE PER NCDOT PERMIT IN NCDOT RIGHT-OF-WAY

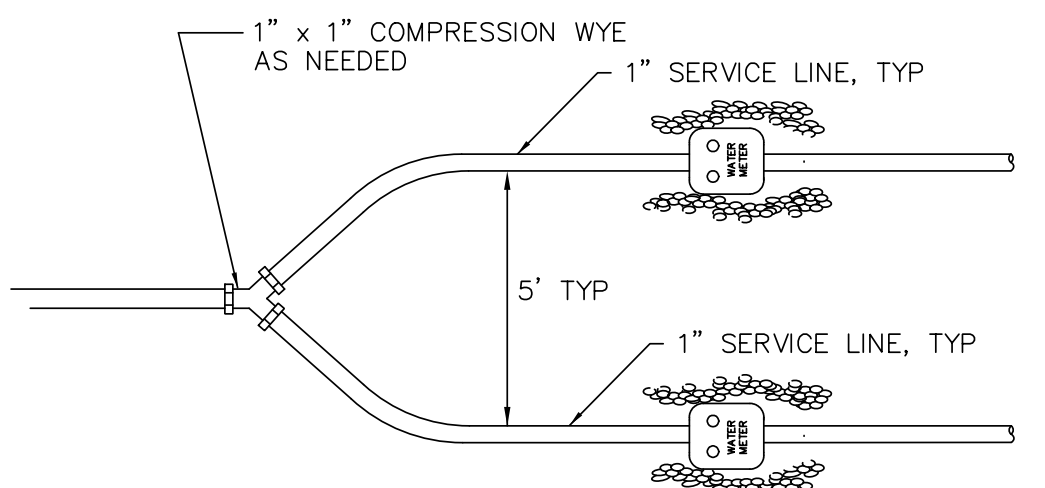


**PLAN VIEW FOR WATER/IRRIGATION SPLIT SERVICE  
 (WATER/IRRIGATION SERVICES INSTALLED CONCURRENTLY)**

- NOTES:
1. CONNECTION BETWEEN 1" CTS SERVICE LINE AND YOKE BOX TO BE MADE USING A 1" BRASS UNION.
  2. ALL WATER SERVICE LATERALS SHALL HAVE A TRACER WIRE INSTALLED PER BRUNSWICK COUNTY WATER DISTRIBUTION TECHNICAL SPECIFICATIONS.

ACCEPTABLE DOUBLE METER BOXES	
FORD	DGHC118-C14439-002-NL
MCDONALD	773N208BCGP 434TCX001

- \* OR APPROVED EQUAL
1. OR APPROVED EQUAL - MUST ACCOMMODATE TWO (2) SENSUS WATER METERS WITH AMR/AMI
  2. LID TO BE LOCKING TYPE
  3. DOUBLE METER BOX IS FOR (2) 3/4" METERS ONLY



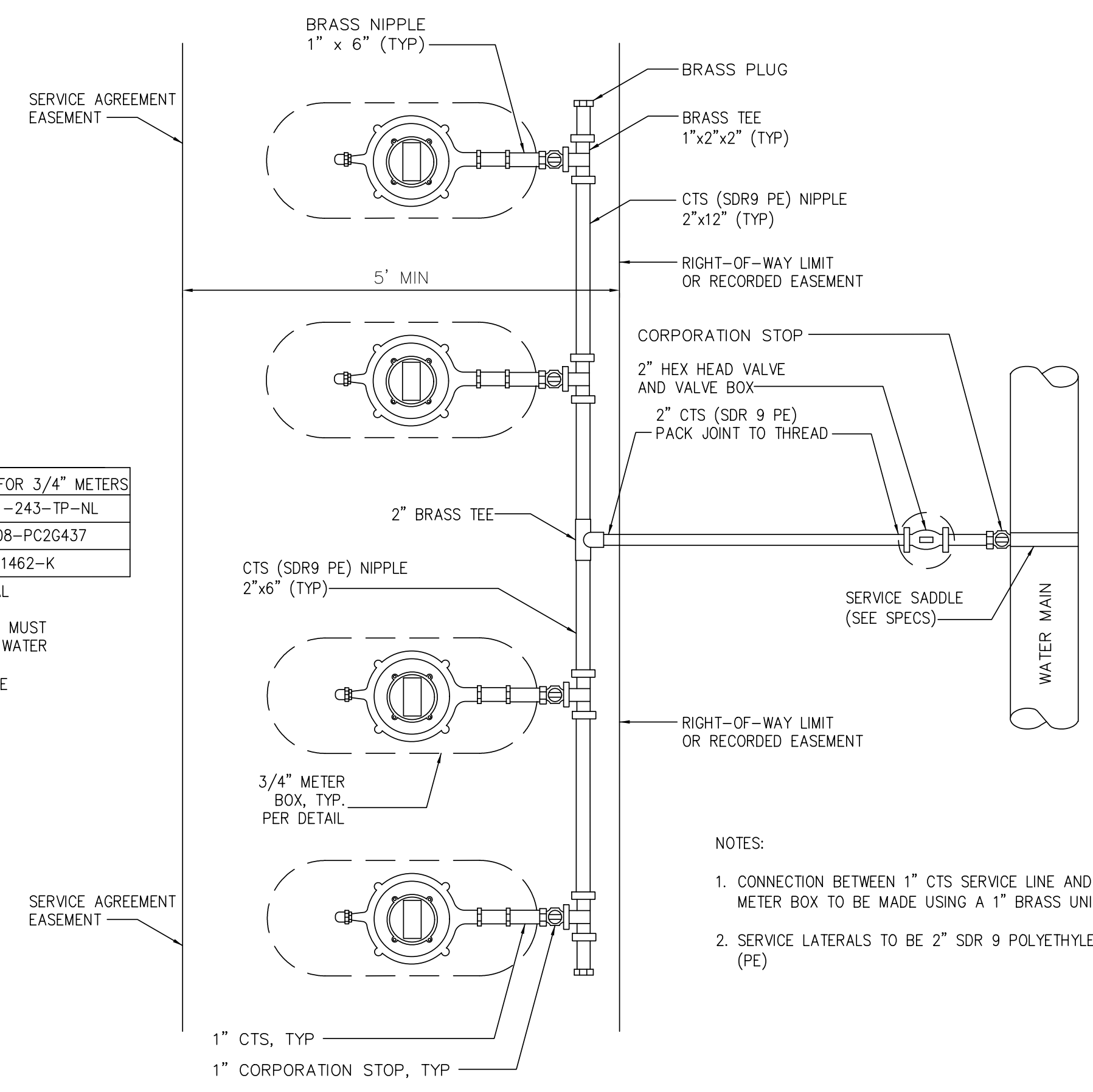
**WYE PLAN VIEW FOR WATER/IRRIGATION SPLIT SERVICE  
 (IRRIGATION SERVICE INSTALLED AFTER MAIN METER)**

APPROVED SINGLE METER BOXES FOR 3/4" METERS	
FORD	LYLV-141-243-TP-NL
MCDONALD	776-208-PC2G437
MUELLER	H-1462-K

- \* OR APPROVED EQUAL
1. OR APPROVED EQUAL - MUST ACCOMMODATE SENSUS WATER METER WITH AMR/AMI
  2. LID TO BE LOCKING TYPE

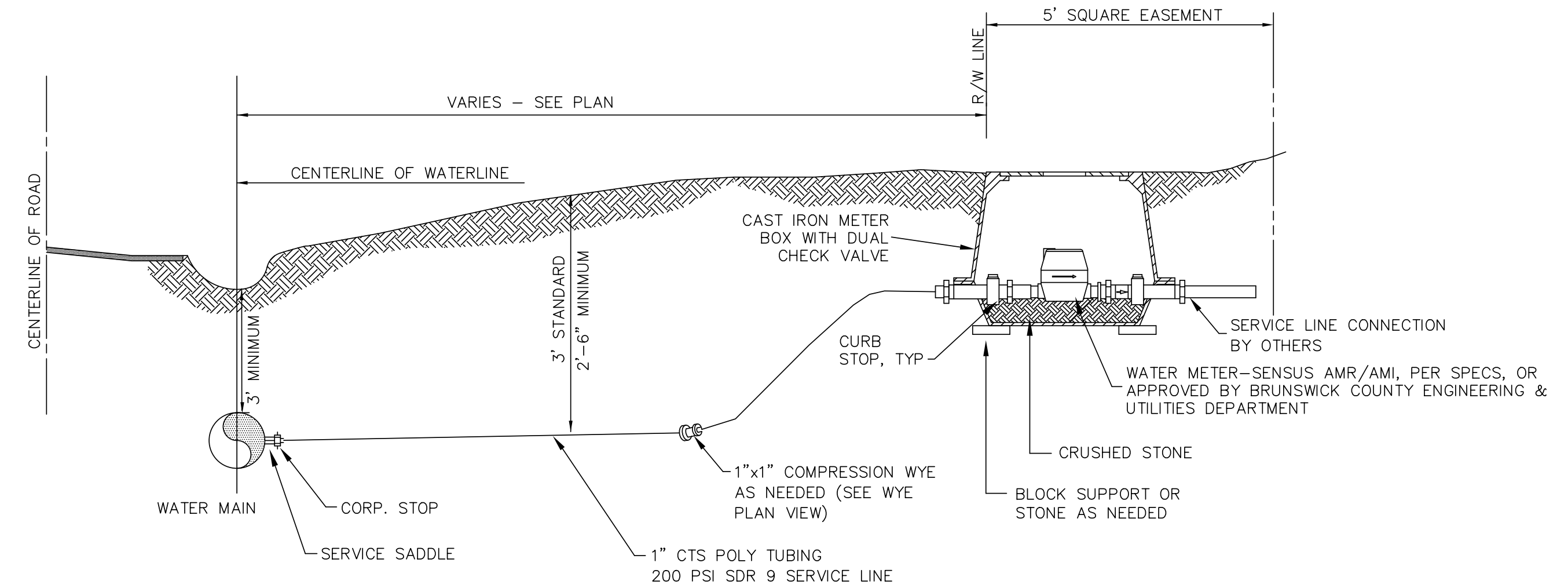
APPROVED SINGLE METER BOXES FOR 3/4" METERS	
FORD	LYLV-141-243-TP-NL
MCDONALD	776-208-PC2G437
MUELLER	H-1462-K

- \* OR APPROVED EQUAL
1. OR APPROVED EQUAL - MUST ACCOMMODATE SENSUS WATER METER WITH AMR/AMI
  2. LID TO BE LOCKING TYPE



**STANDARD GANG METER ASSEMBLY  
 DETAIL W-6**

- NOTES:
1. CONNECTION BETWEEN 1" CTS SERVICE LINE AND METER BOX TO BE MADE USING A 1" BRASS UNION.
  2. SERVICE LATERALS TO BE 2" SDR 9 POLYETHYLENE (PE)



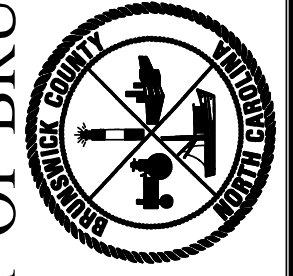
**3/4" - 2" STANDARD WATER TAP  
 INSTALLATION  
 DETAIL W-7**

- NOTE:
- 1) CONTRACTOR SHALL PLACE METER BOX IN NON-TRAFFIC AREA AT LOCATION SPECIFIED BY BRUNSWICK COUNTY ENGINEERING DEPARTMENT.
  - 2) METER BOXES SHALL BE CAST IRON WITH DUAL CHECK VALVES.
  - 3) 1-1/2" AND 2" METERS WILL REQUIRE 2" CTS POLY TUBING.
  - 4) 1, 1-1/2" AND 2" METERS WILL REQUIRE A METER BOX SIZED ADEQUATELY TO HOUSE A 1, 1-1/2" OR 2" SENSUS METER, HORIZONTAL BYPASS SETTER, AND MXU. ALL REQUIRED ITEMS TO BE PROVIDED BY INSTALLER.
  - 5) 1, 1-1/2" AND 2" METER BOXES SHALL BE MARKED WATER AND HAVE A HOLE FOR INSTALLATION OF THE MXU AND TOUCH PAD TO BE PROVIDED BY INSTALLER.
  - 6) NO PLASTIC BOXES FOR 1 1/2" AND 2" METERS. BOX MUST BE DUCTILE IRON OR QUAZITE.
  - 7) ALL WATER SERVICE LATERALS SHALL HAVE A TRACER WIRE INSTALLED PER BRUNSWICK COUNTY WATER DISTRIBUTION TECHNICAL SPECIFICATIONS.

(FOR METERS LARGER THAN 2", REFER TO DETAIL ON PAGE 3 OF 5)

Revisions
1.1 - DATED 3/7/2013
Modified double meter box
1.2 - DATED 4/5/2013
Corrected meter box #'s
1.3 - DATED 7/15/2015
Updated meter box #'s
1.4 - DATED 10/27/2015
Modified W-7
1.5 - DATED 12/8/2016
Revise Detail Numbers
1.6 - DATED 3/6/2017
Revise Detail W-6
1.7 - DATED 3/22/2017
Revise Detail W-6
1.8 - DATED 10/29/2018
Updated acceptable double meter boxes

COUNTY OF BRUNSWICK



GENERAL WATER DETAILS  
 FOR  
**BRUNSWICK COUNTY**  
 NORTH CAROLINA

Date: 05-23-12  
 Scale: NTS  
 Drawn By: JDM  
 Checked By: WLP

DATE: 8/13/2018  
 TIME: 10:34:56 PM  
 DGN: P:\6048203\900\_Work\916\Utility\_Construction\W-5021\_UC\_UC3B.dgn