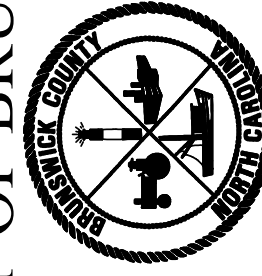


DOCUMENT NOT CONSIDERED FINAL  
UNLESS ALL SIGNATURES COMPLETED

## UTILITY CONSTRUCTION

Revisions	
1.1 - DATED 4/30/2013	
1.2 - DATED 5/29/2013	
1.3 - DATED 7/15/2015	
1.4 - DATED 12/8/2016	
1.5 - DATED 2/6/2020	
1.6 - DATED 3/27/2020	
Mod Detail W-1 & W-2	
1.7 - DATED 4/22/2020	
Mod Detail W-4	

COUNTY OF BRUNSWICK

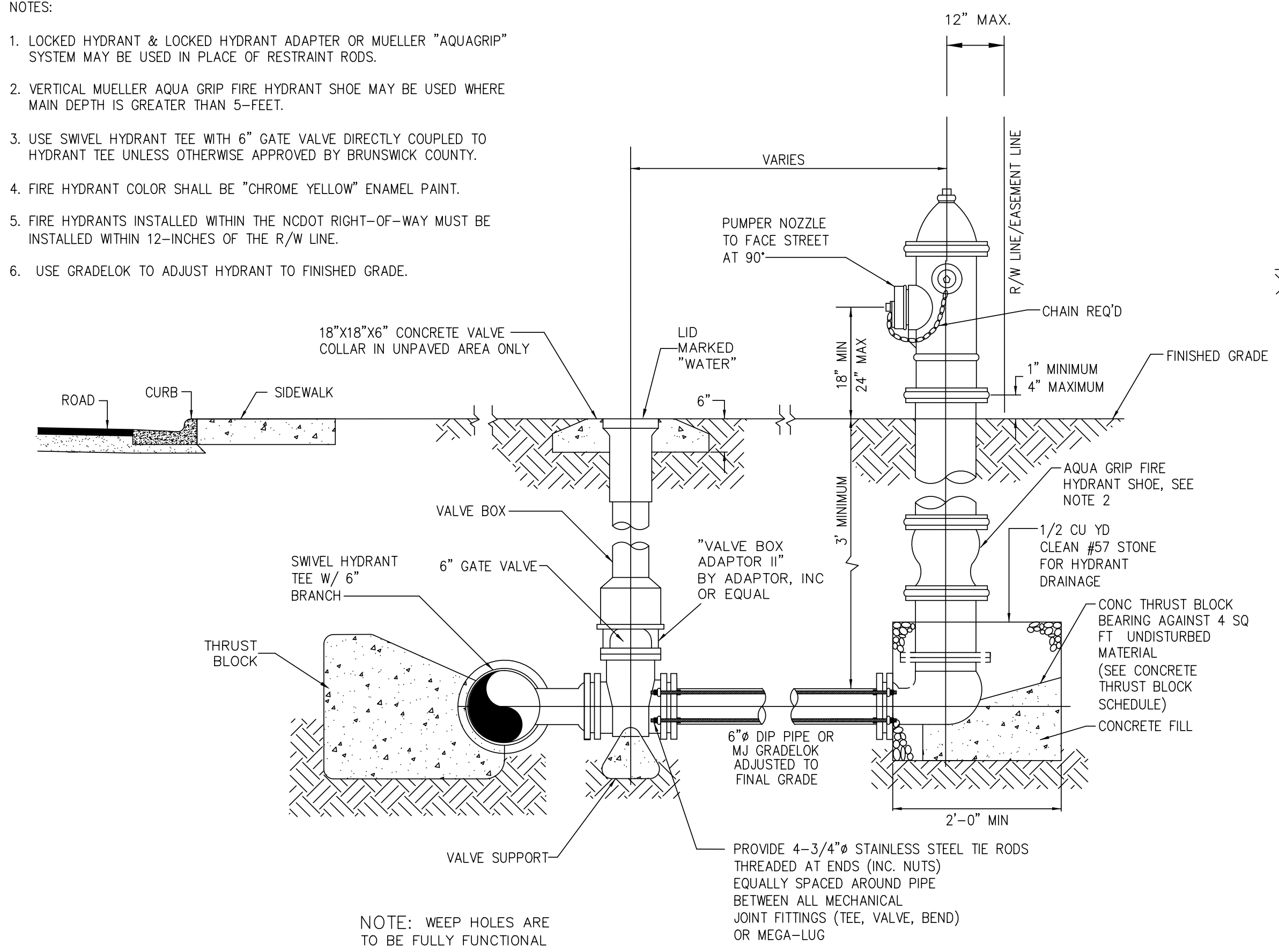


GENERAL WATER DETAILS FOR  
**BRUNSWICK COUNTY**  
NORTH CAROLINA

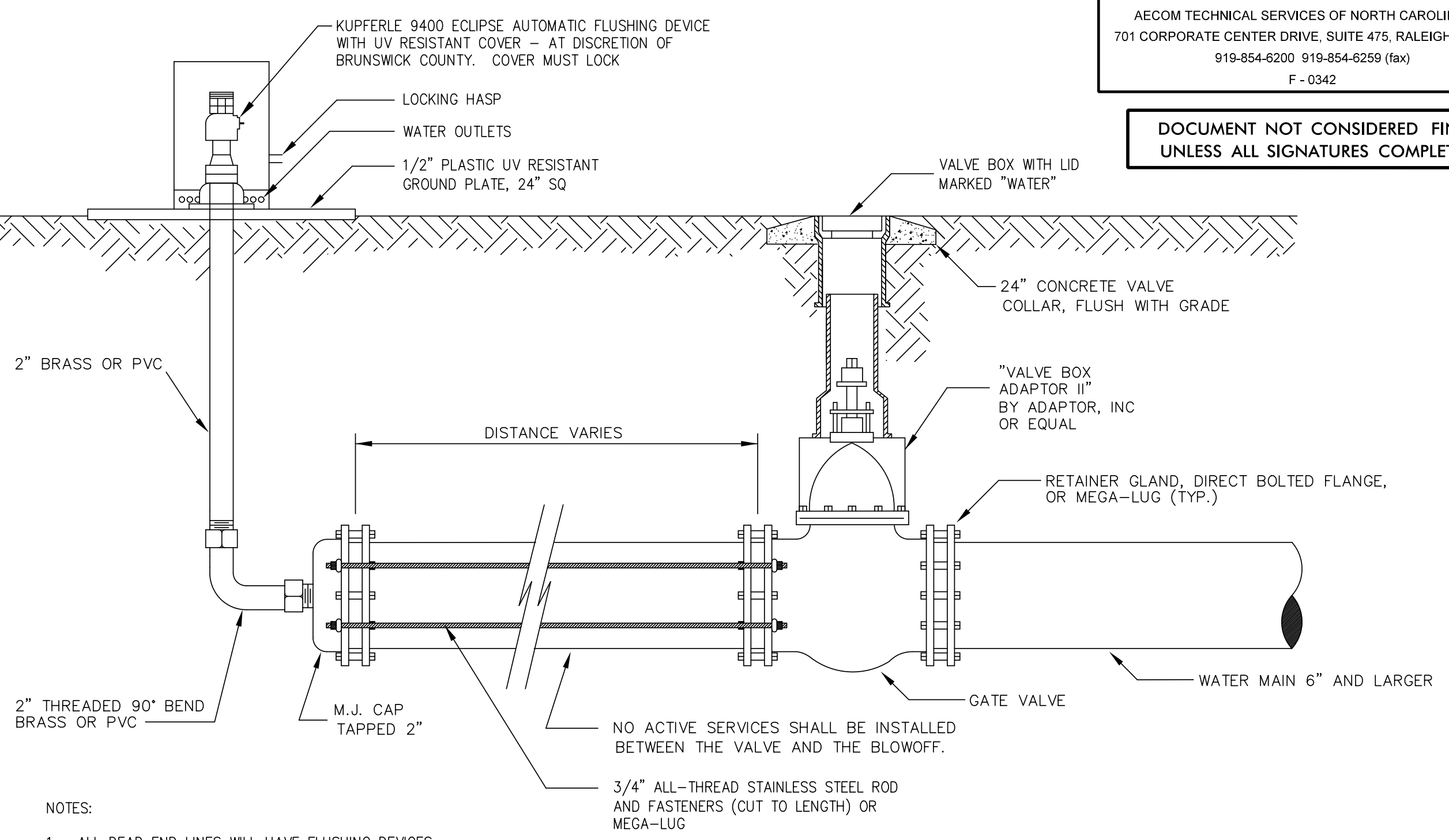
Date: 05-22-12  
Scale: NTS  
Drawn By: JDM  
Checked By: WLP

### NOTES:

1. LOCKED HYDRANT & LOCKED HYDRANT ADAPTER OR MUELLER "AQUAGRIP" SYSTEM MAY BE USED IN PLACE OF RESTRAINT RODS.
2. VERTICAL MUELLER AQUA GRIP FIRE HYDRANT SHOE MAY BE USED WHERE MAIN DEPTH IS GREATER THAN 5- FEET.
3. USE SWIVEL HYDRANT TEE WITH 6" GATE VALVE DIRECTLY COUPLED TO HYDRANT TEE UNLESS OTHERWISE APPROVED BY BRUNSWICK COUNTY.
4. FIRE HYDRANT COLOR SHALL BE "CHROME YELLOW" ENAMEL PAINT.
5. FIRE HYDRANTS INSTALLED WITHIN THE NCDOT RIGHT-OF-WAY MUST BE INSTALLED WITHIN 12-INCHES OF THE R/W LINE.
6. USE GRADELOK TO ADJUST HYDRANT TO FINISHED GRADE.



FIRE HYDRANT ON MAINS 12" AND SMALLER  
DETAIL W-1



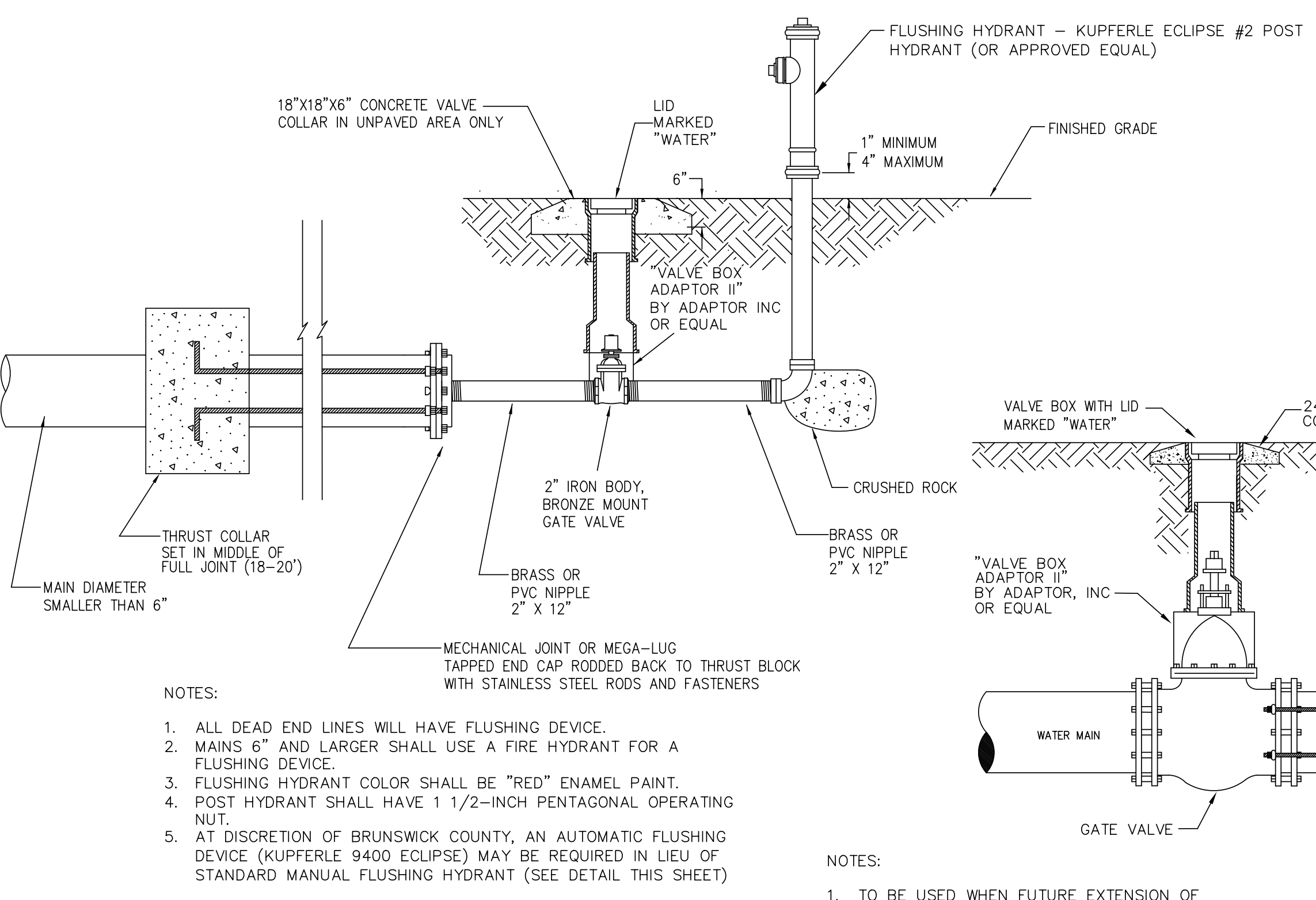
AUTOMATIC FLUSHING DEVICE FOR MAINS 6" AND LARGER (FOR MAINS TO BE EXTENDED LATER)  
DETAIL W-2

### NOTES:

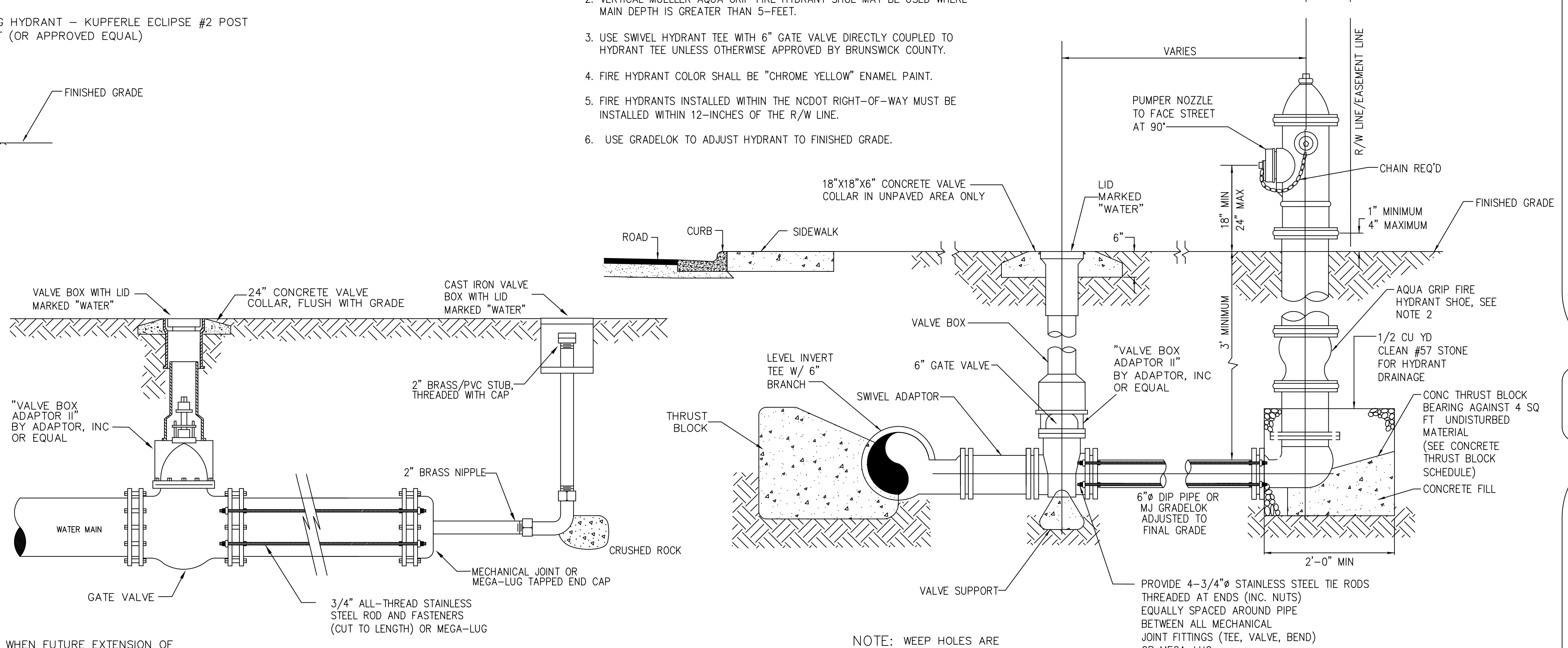
1. ALL DEAD END LINES WILL HAVE FLUSHING DEVICES.
2. MAINS 6" AND GREATER NOT BEING EXTENDED IN THE FUTURE SHALL USE A FIRE HYDRANT FOR A FLUSHING DEVICE.
3. CONTRACTOR SHALL REMOVE AUTOMATIC FLUSHING DEVICE FOR MAIN EXTENSIONS AND DELIVER AUTOMATIC FLUSHING DEVICE TO BRUNSWICK COUNTY REPRESENTATIVE.

### NOTES:

1. LOCKED HYDRANT & LOCKED HYDRANT ADAPTER OR MUELLER "AQUAGRIP" SYSTEM MAY BE USED IN PLACE OF RESTRAINT RODS.
2. VERTICAL MUELLER AQUA GRIP FIRE HYDRANT SHOE MAY BE USED WHERE MAIN DEPTH IS GREATER THAN 5- FEET.
3. USE SWIVEL HYDRANT TEE WITH 6" GATE VALVE DIRECTLY COUPLED TO HYDRANT TEE UNLESS OTHERWISE APPROVED BY BRUNSWICK COUNTY.
4. FIRE HYDRANT COLOR SHALL BE "CHROME YELLOW" ENAMEL PAINT.
5. FIRE HYDRANTS INSTALLED WITHIN THE NCDOT RIGHT-OF-WAY MUST BE INSTALLED WITHIN 12-INCHES OF THE R/W LINE.
6. USE GRADELOK TO ADJUST HYDRANT TO FINISHED GRADE.



STANDARD FLUSHING DEVICE FOR WATER MAINS  
DETAIL W-3



FIRE HYDRANT ON MAINS LARGER THAN 12"  
DETAIL W-4

### NOTES:

1. TO BE USED WHEN FUTURE EXTENSION OF WATER MAIN IS KNOWN (i.e. PHASES)
2. FULL SIZE BOUNDARY VALVE REQUIRED.
3. THIS CAN ONLY BE USED WITH BRUNSWICK COUNTY ENGINEERING APPROVAL.

OLD STYLE TEMPORARY BLOW-OFF ASSEMBLY  
DETAIL W-4A

DATE: 8/13/2011  
TIME: 10:34:35 PM  
DGN: P:\6048203\900\_Works\9162\_Utilities\_Construction\W-5021\_UC\_UC3A.dgn