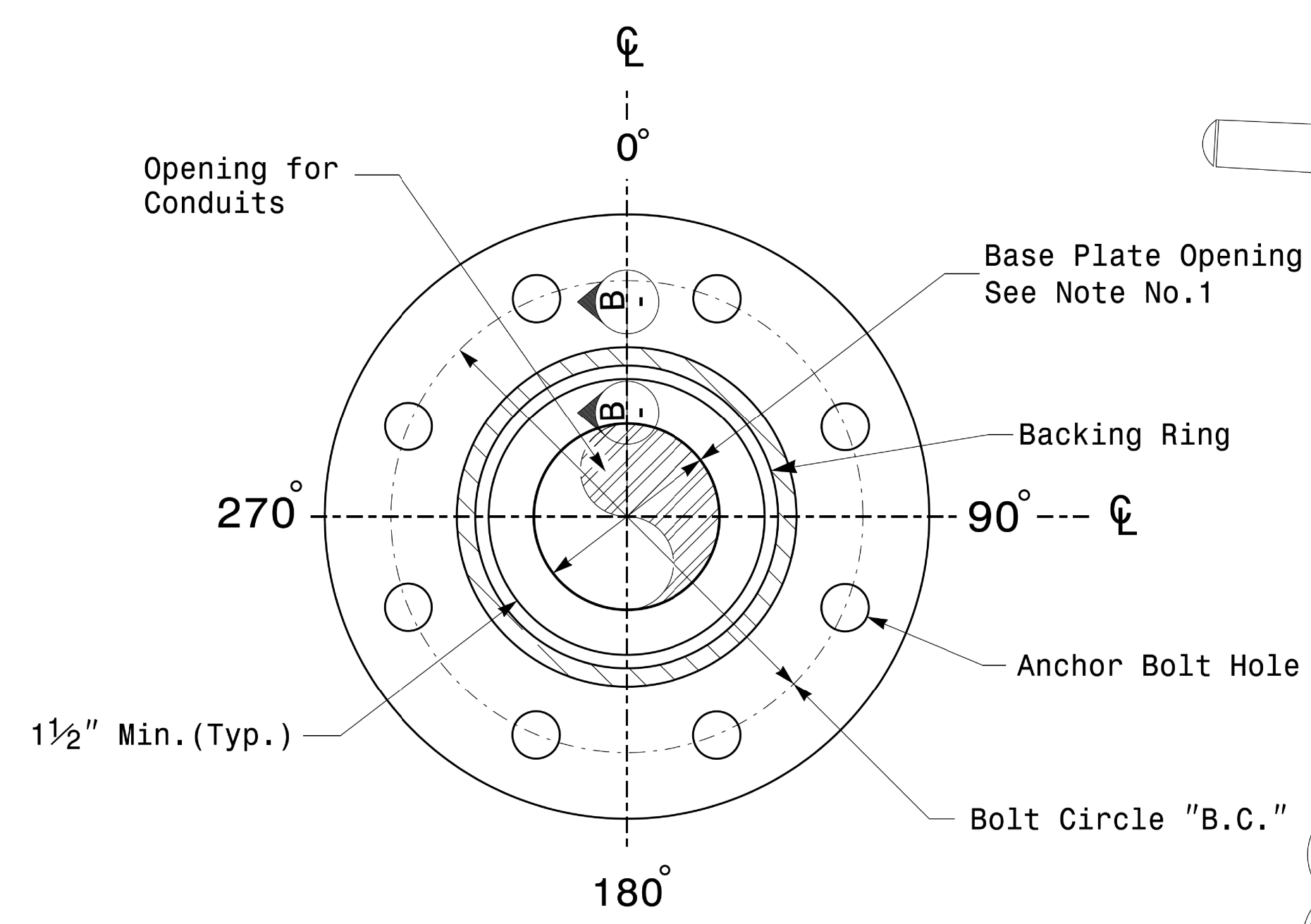
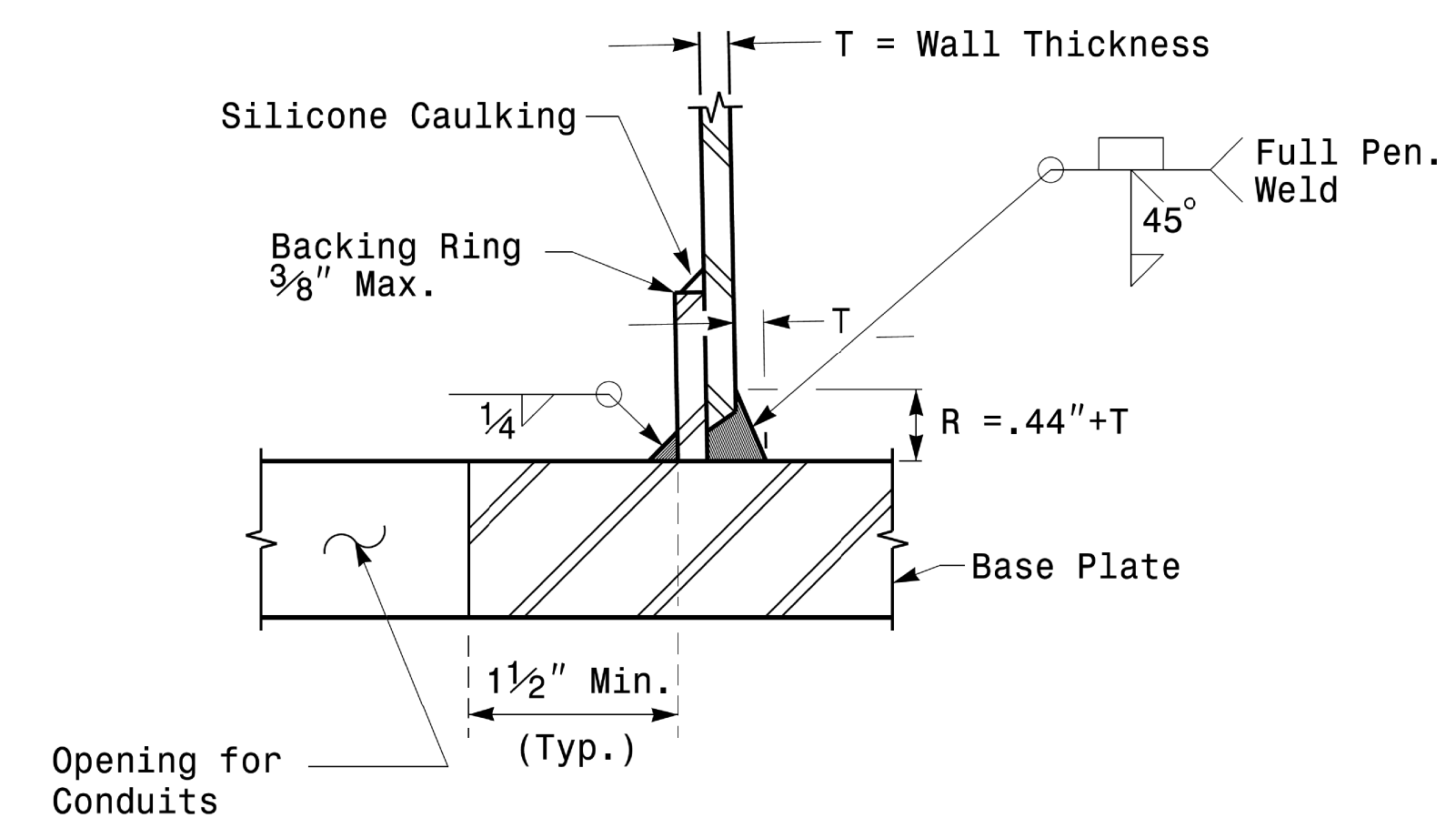


|                 |           |
|-----------------|-----------|
| PROJECT ID. NO. | SHEET NO. |
| R - 5021        | Sig.M4    |

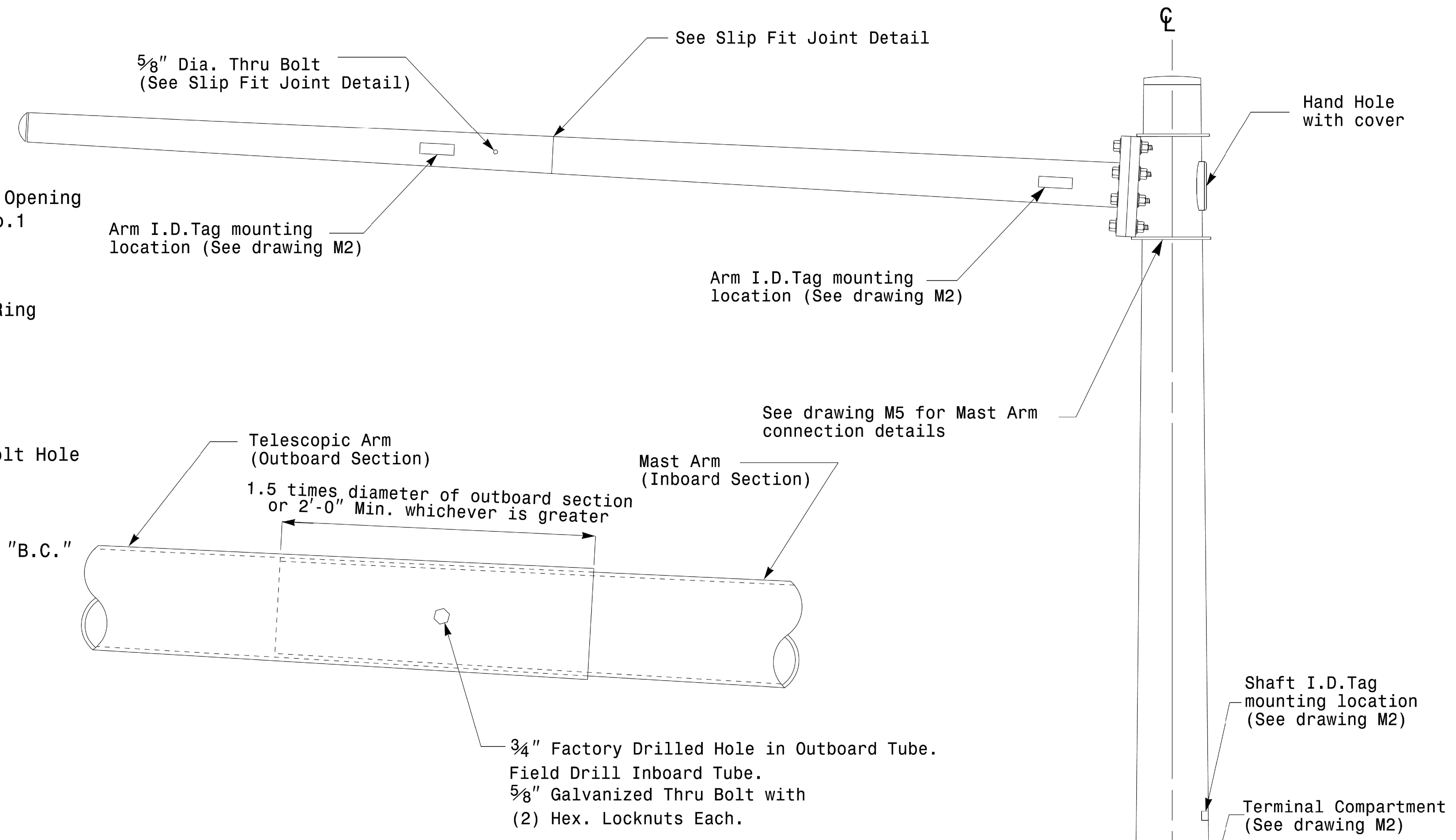
Note:  
 1. Opening in pole base plate shall be equal to pole base inside diameter minus 3 1/2" but shall not be less than 8 1/2".



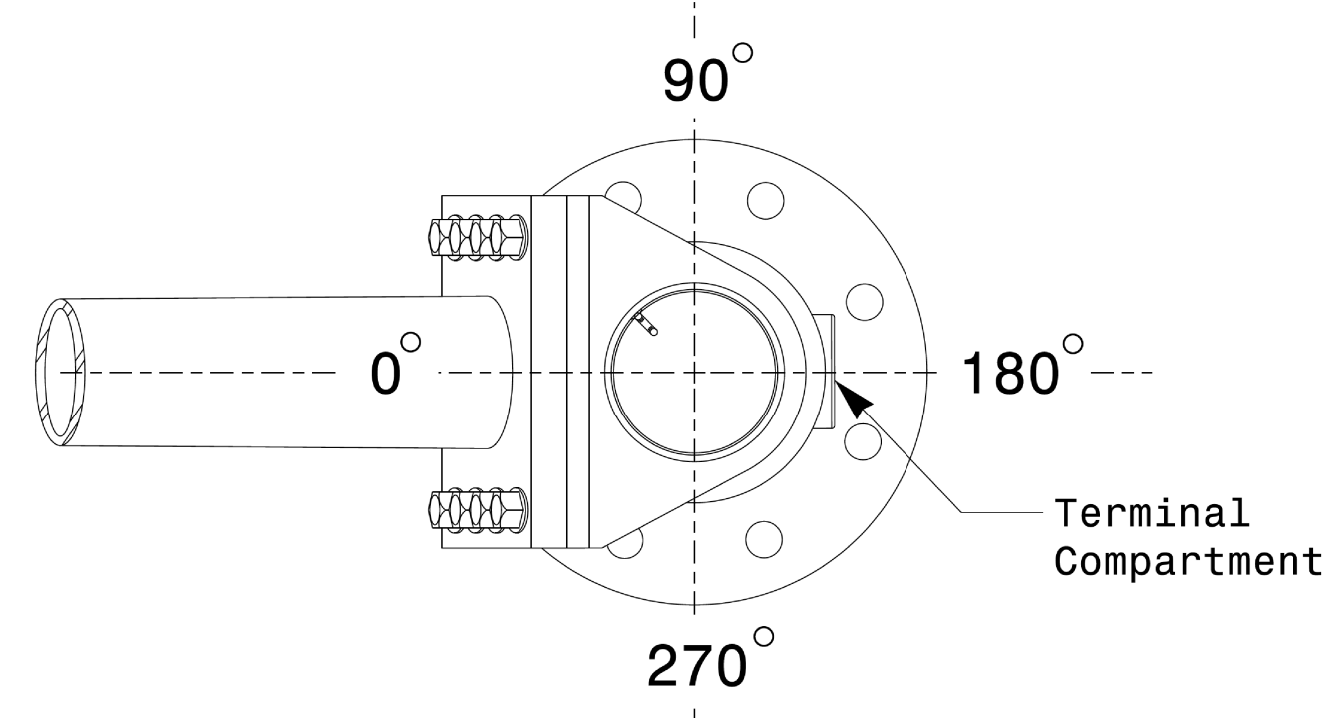
**Section A-A**  
**Pole Base Plate Details**



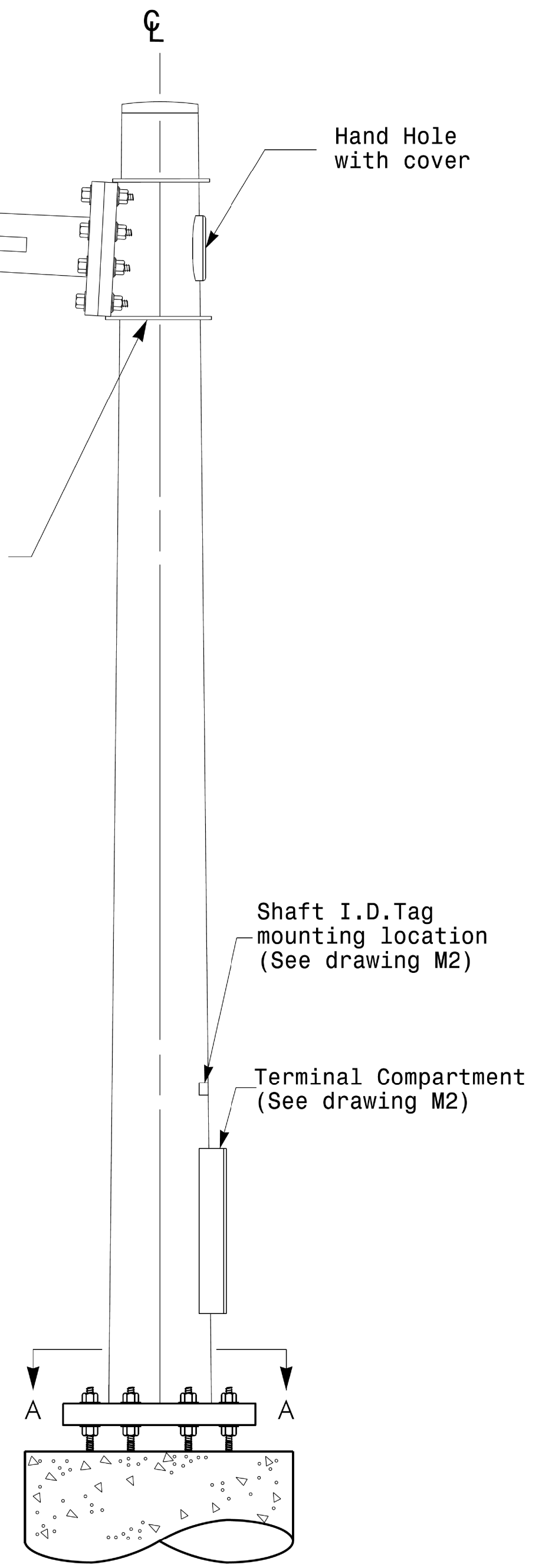
**Section B-B**  
 (Pole Attachment to Base Plate)  
**Full-Penetration Groove Weld Detail**



**Slip Fit Joint Detail for Mast Arm**



**Mast Arm Radial Orientation**



**Mast Arm Pole**

**Fabrication Details - Mast Arm Poles**

11-OCT-2017 08:33 S:\MIS\SUM\TIS Signal\Sig\Design\Section\Mast Arm Poles.dgn

|                     |   |   |                    |
|---------------------|---|---|--------------------|
|                     | <b>Typical Fabrication Details For Mast Arm Poles</b> |   | SEAL<br>           |
|                     | PLAN DATE: OCTOBER 2017<br>PREPARED BY: N. BITTING    | DESIGNED BY: K.C. DURIGON<br>REVIEWED BY: D.C. SARKAR |                    |
| SCALE: 0 NA<br>NONE |   |   | 10/11/2017<br>DATE |