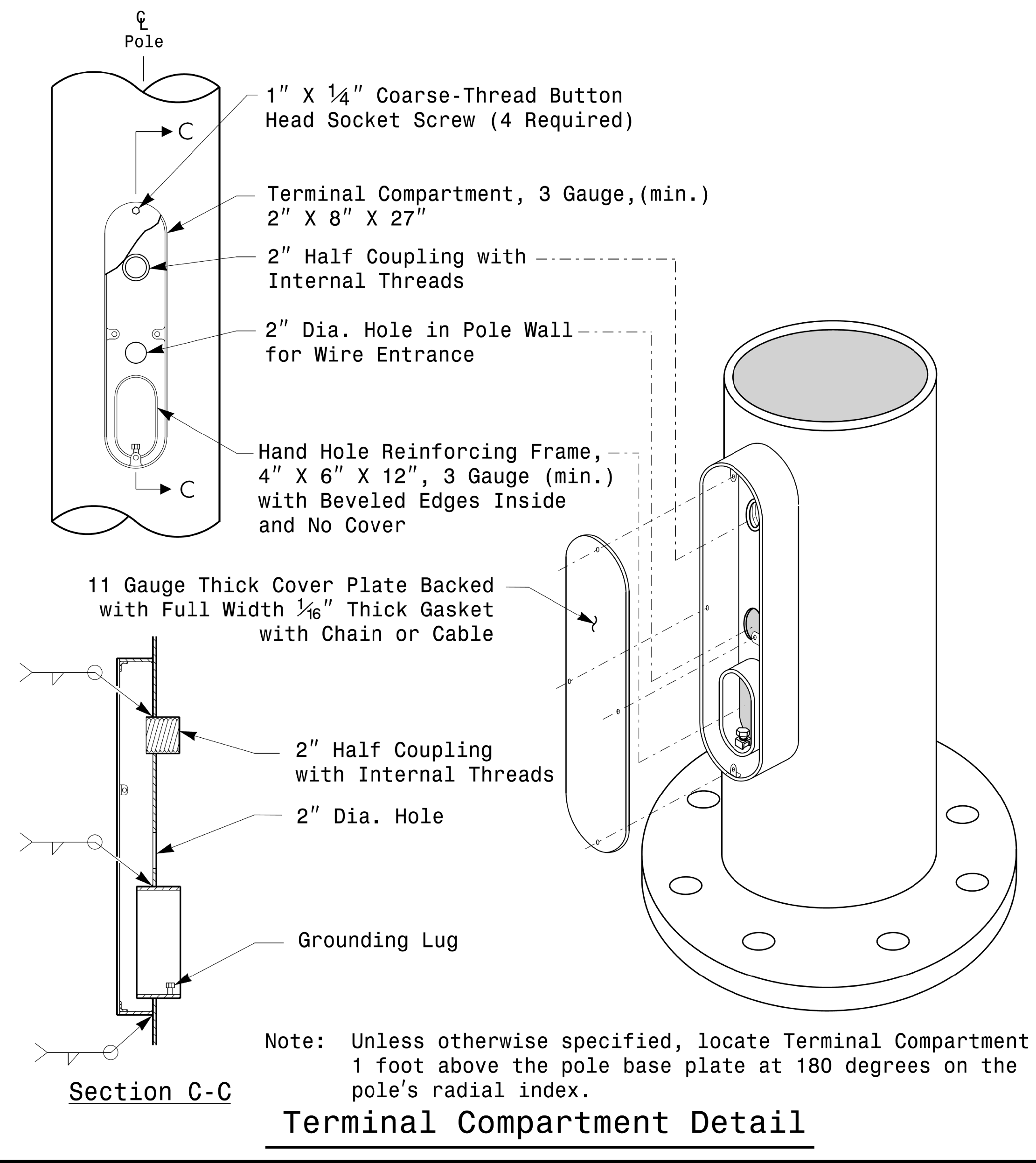


PROJECT ID. NO.	SHEET NO.
R - 5021	Sig.M2



MFG _____	MFG. DATE: MM/YY _____
SHAFT D/T/L/Y _____	
ARM-A D/T/L/Y _____	
ARM-B D/T/L/Y _____	
A.B. DIA./B.C./L/Y _____	
NCDOT SIG. INV. NO. _____	
NCDOT POLE NO. _____	

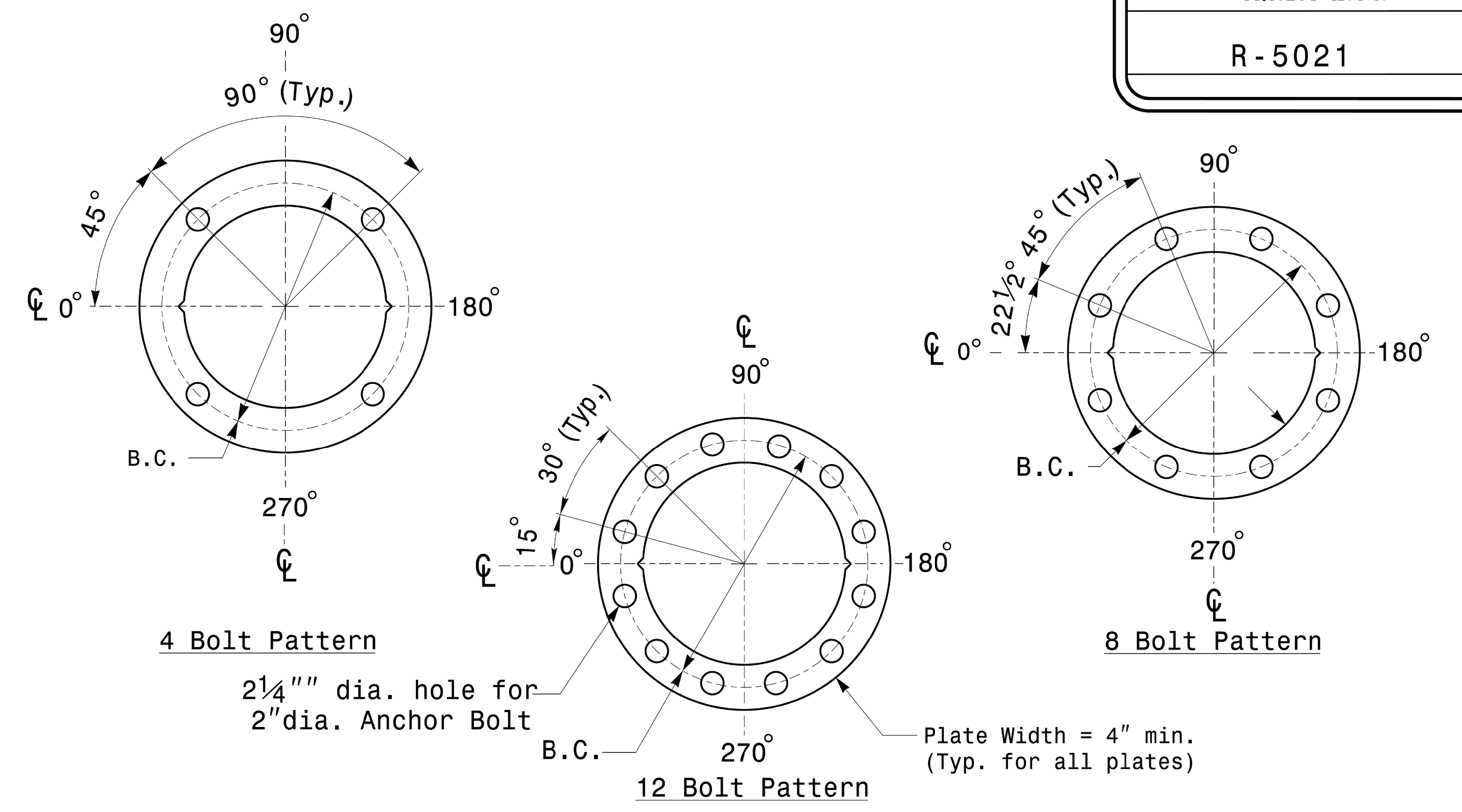
MFG _____	MFG. DATE: MM/YY _____
SECTION D/T/L/Y _____	
NCDOT SIG. INV. NO. _____	
NCDOT POLE NO. _____	

Shaft I.D. Tag
(Provide on Shaft of Strain Poles and Mast Arm Poles Shaft)

Notes:

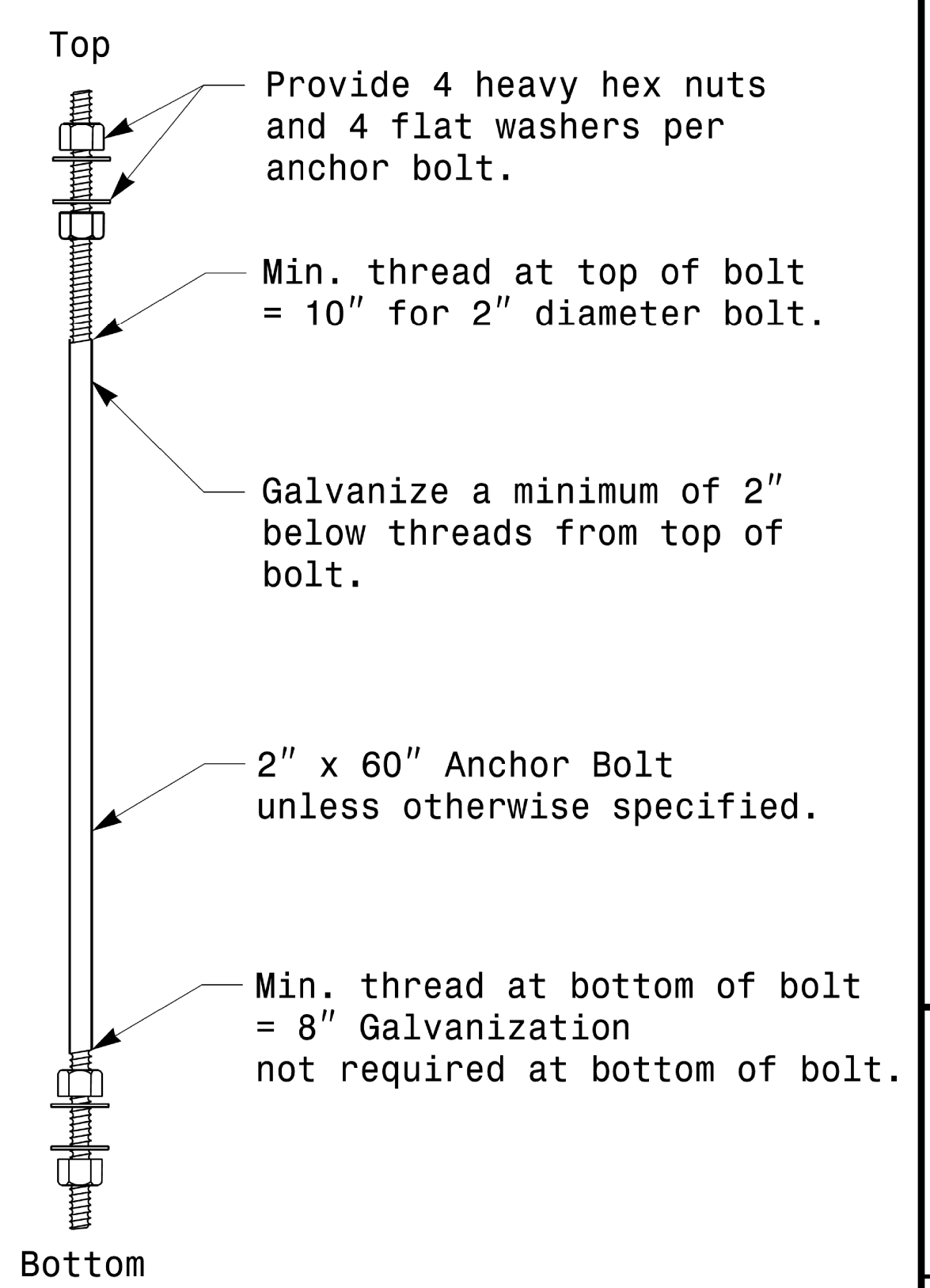
- 1) D= Diameter, T= Thickness, L= Length, Y= Yield Strength
- 2) A.B. = Anchor Bolt
- 3) B.C. = Bolt Circle of Anchor Bolts
- 4) If Custom Design, use "NCDOT STANDARD" line for Signal Inv. Number and pole I.D. number
- 5) See drawing M3 and M4 for mounting positions of I.D. tags.

Identification Tag Details

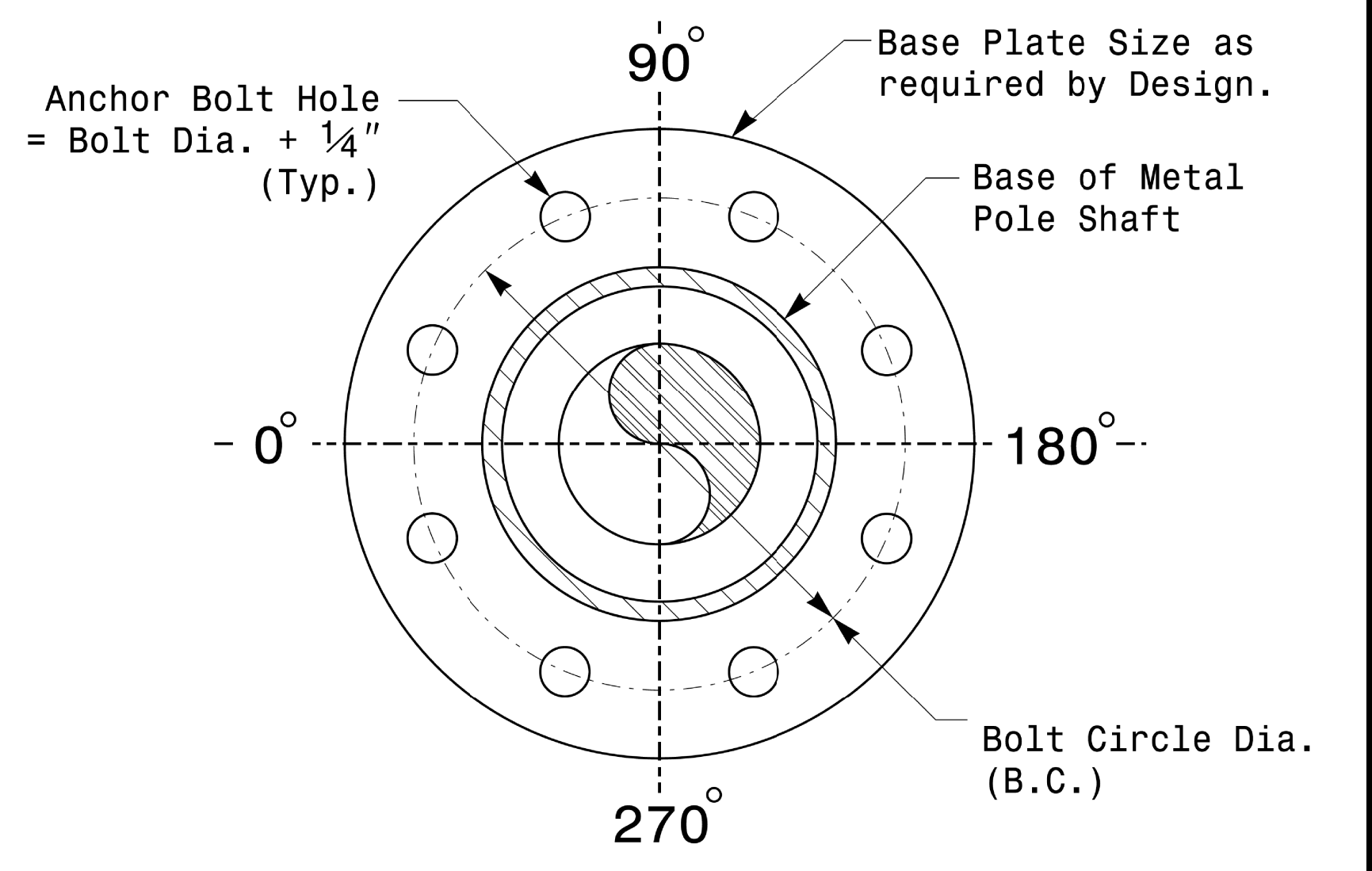


Construct Templates and Plates from 1/4" min. thick Steel. Galvanizing is not required.

Base Plate Template and Anchor Bolt Lock Plate Details



Anchor Bolt Detail



Typical Base Plate Detail

Prepared in the Offices of:

750 N. Greenfield Pkwy, Garner, NC 27529

Typical Fabrication Details For All Metal Poles			
PLAN DATE: OCTOBER 2017	DESIGNED BY: C.F. ANDREWS		
PREPARED BY: N. BITTING	REVIEWED BY: D.C. SARKAR		
REVISIONS	INIT.	DATE	

SEAL

DocuSigned by: D. Sarkar

10/11/2017 DATE

Fabrication Details – All Metal Poles

11/16/17 2017 10:30:30
 S:\1725\SUMMITS\Sigmet\Sigsig1 Design Sect\onMcastern Region\MM Sheets\2016\2014 Sig.M2 Std. Fabrication Details-All Poles.dgn
 02/17/2017