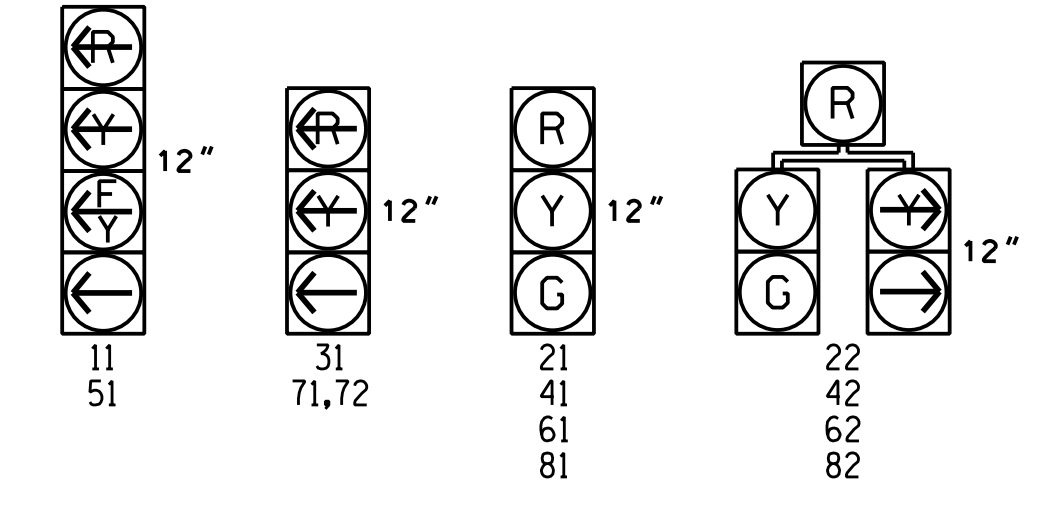
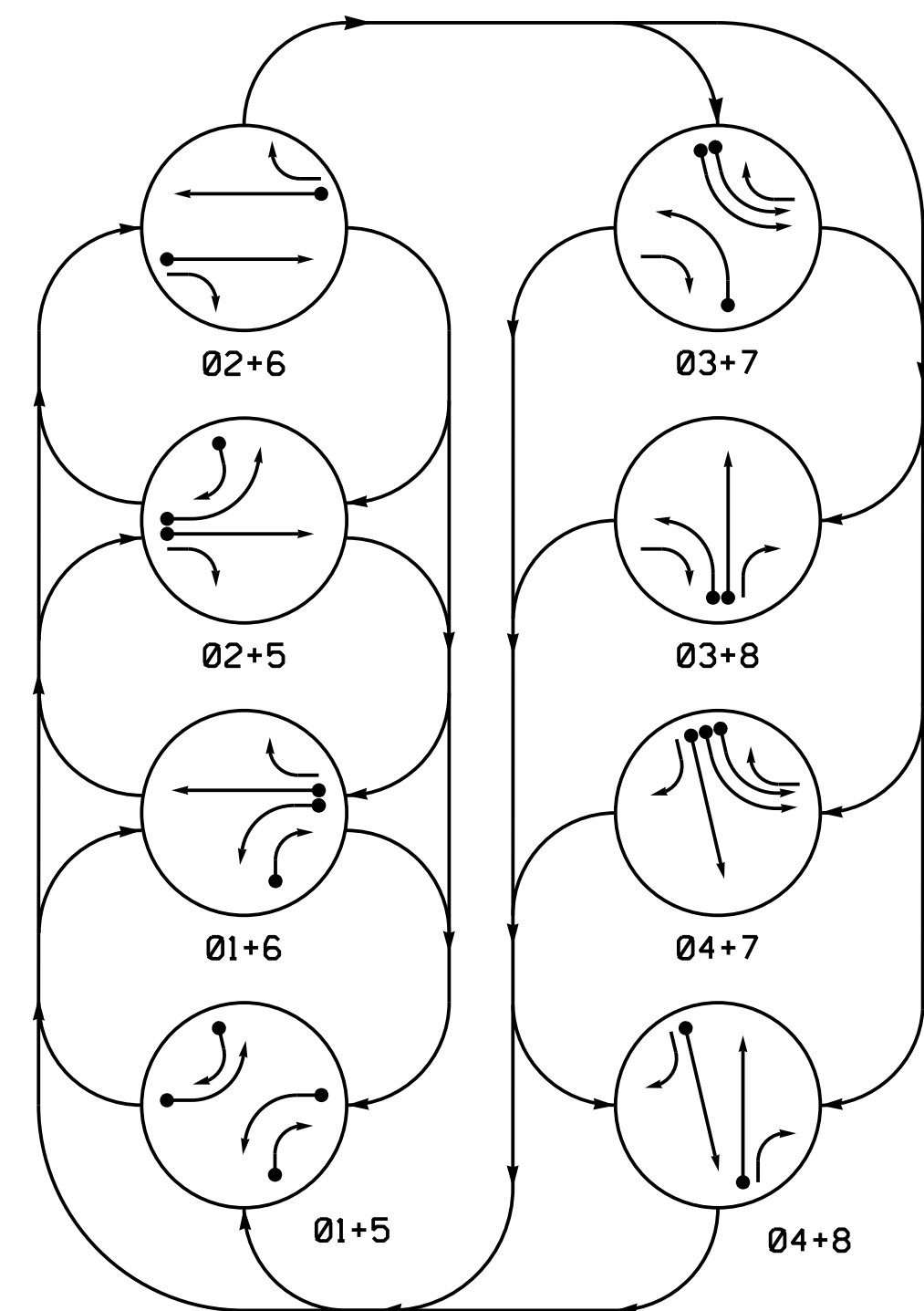


SIGNAL FACE I.D.

All Heads L.E.D.



ALTERNATE PHASING DIAGRAM



PHASING DIAGRAM DETECTION LEGEND

- ←● DETECTED MOVEMENT
- ← UNDETECTED MOVEMENT (OVERLAP)
- ←..... UNSIGNALIZED MOVEMENT
- ←- - - - PEDESTRIAN MOVEMENT

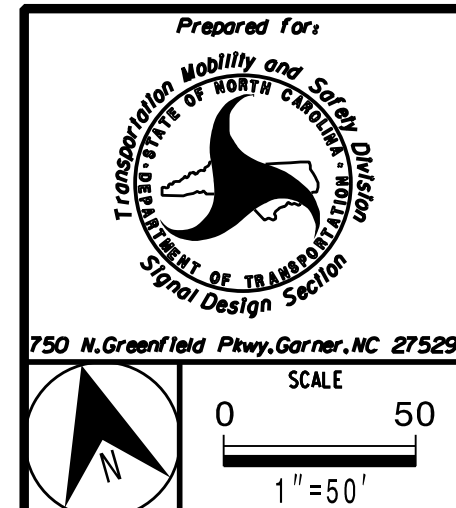
ALTERNATE PHASING TABLE OF OPERATION

SIGNAL FACE	PHASE								F L T
	01+5	01+6	02+5	02+6	03+7	03+8	04+7	04+8	
11	—	—	—	—	—	—	—	—	Y
21	R	R	G	G	R	R	R	R	Y
22	R	R	G	G	R	R	R	R	Y
31	—	—	—	—	—	—	—	—	—
41	R	R	R	R	R	R	G	G	R
42	R	R	R	R	R	R	G	G	R
51	—	—	—	—	—	—	—	—	Y
61	R	G	R	G	R	R	R	R	Y
62	R	G	R	G	R	R	R	R	Y
71,72	—	—	—	—	—	—	—	—	—
81	R	R	R	R	R	G	R	G	R
82	R	R	R	R	R	G	R	G	R

Signal Upgrade
 Temporary Design 2
 Construction Phase 1a-1b
 Sheet 2 of 2

**DOCUMENT NOT CONSIDERED FINAL
 UNLESS ALL SIGNATURES COMPLETED**

HNTB HNTB NORTH CAROLINA, P.C.
 343 E. Six Forks Road, Suite 200
 Raleigh, North Carolina 27609
 NC License No: C-1554
 (919) 546-8997



Prepared for: TRANSFORMATION Mobility and Safety Solutions STATE OF NORTH CAROLINA SIGNAL DESIGN SECTION		750 N. Greenfield Pkwy, Garner, NC 27529	
NC 211 (Southport-Supply Road) at NC 906 (Midway Road/ Middleton Boulevard)		Division 03 Brunswick Co. Southport	
PLAN DATE: June 2017	REVIEWED BY: A.D. Klinksiek	PREPARED BY: A.H. Thornburg	REVIEWED BY: N.R. Simmons
REVISIONS	INIT.	DATE	

SEAL
 NORTH CAROLINA
 PROFESSIONAL
 ENGINEER
 SEAL
 031464
 NATASHA R. SIMMONS
 Signature: *Natasha Simmons*
 DATE: 9/10/2021
 SIG. INVENTORY NO. 03-0901T2