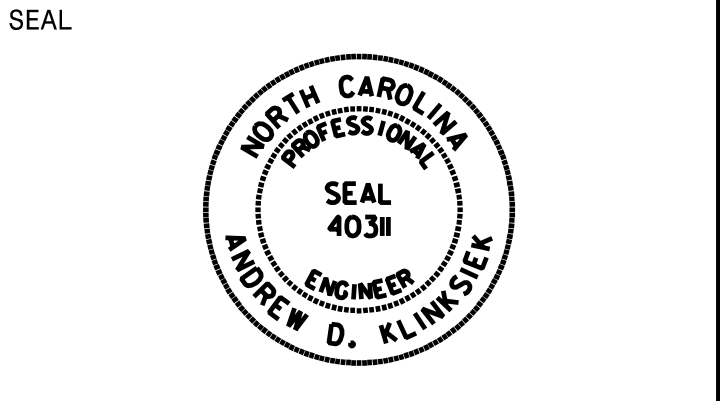


APPROVED: *Andrew D. Klinck*
E-3078F9459E448

DATE: 9/2/2021



**DOCUMENT NOT CONSIDERED FINAL
UNLESS ALL SIGNATURES COMPLETED**

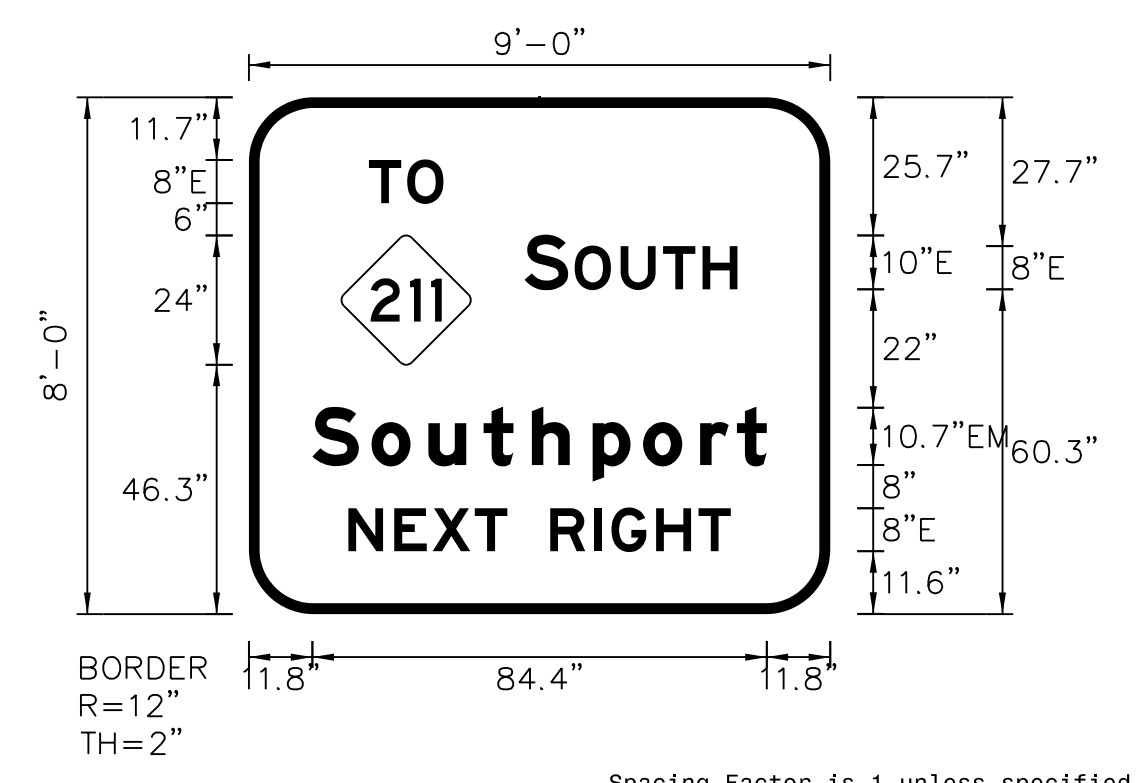
SIGN NUMBER: 110
 TYPE: A
 QUANTITY: 1
 SIGN WIDTH: 9'-0"
 HEIGHT: 8'-0"
 TOTAL AREA: 72.0 Sq.Ft.
 BORDER TYPE: FLUSH
 RECESS: 0"
 WIDTH: 2"
 RADII: 12"
 NO. Z BARS: 3
 LENGTH: 100.0

BACKG COLOR: Green
 COPY COLOR: White

SYMBOL	X	Y	WID	HT
M1-5-3-24-80	17.2	46.3	24	24

MAT'L: 0.125" ALUMINUM

DESIGN BY: JTT
 PROJECT ID: R-5021
 CHECKED BY: TRT/ADK
 DIV: 03
 DATE: April 2018



- NOTES:
- Legend and border shall be direct applied Grade C reflective sheeting.
 - Shield shall be Grade C reflective sheeting on 0.032" aluminum and demountable.
 - Background shall be Grade C reflective sheeting.

LETTER POSITIONS

Letter spacings are to start of next letter

	T	O																			Series/Size Text Length
	22.3	7.1	6.7	71.8																	E 2000 13.8
		S	O	U	T	H															E 2000 39.5
	51.2	8.1	1.2	8.6	7.8	7.4	6.5	17.2													E 2000 39.5
		S	O	U	T	H	P	O	R	T											EM 2000 84.4
	11.8	11	10.6	10.2	9	11.3	9.4	10.6	6.8	5.5	11.8										E 2000 84.4
		N	E	X	T	R	I	G	H	T											E 2000 71
	18.5	8.6	7.1	7.8	6	8	8.1	3.3	8.3	7.8	6	18.5									E 2000 71

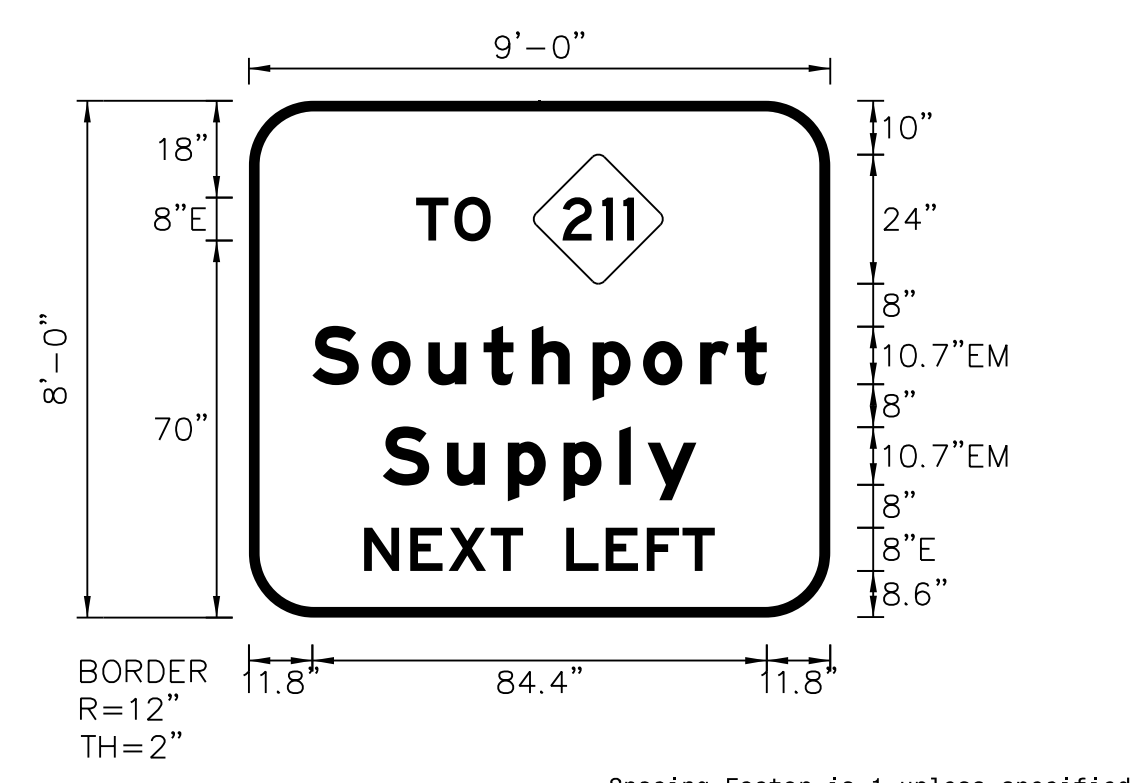
SIGN NUMBER: 112
 TYPE: A
 QUANTITY: 1
 SIGN WIDTH: 9'-0"
 HEIGHT: 8'-0"
 TOTAL AREA: 72.0 Sq.Ft.
 BORDER TYPE: FLUSH
 RECESS: 0"
 WIDTH: 2"
 RADII: 12"
 NO. Z BARS: 3
 LENGTH: 100.0

BACKG COLOR: Green
 COPY COLOR: White

SYMBOL	X	Y	WID	HT
M1-5-3-24-80	52.9	62	24	24

MAT'L: 0.125" ALUMINUM

DESIGN BY: NKV
 PROJECT ID: R-5021
 CHECKED BY: TRT/ADK
 DIV: 03
 DATE: April 2018



- NOTES:
- Legend and border shall be direct applied Grade C reflective sheeting.
 - Shield shall be Grade C reflective sheeting on 0.032" aluminum and demountable.
 - Background shall be Grade C reflective sheeting.

LETTER POSITIONS

Letter spacings are to start of next letter

	T	O																			Series/Size Text Length
	31.1	7.1	6.7	63.1																	E 2000 13.8
		S	O	U	T	H	P	O	R	T											EM 2000 84.4
	11.8	11	10.6	10.2	9	11.3	9.4	10.6	6.8	5.5	11.8										E 2000 84.4
		S	O	U	T	H	P	O	R	T											EM 2000 58.3
	24.9	12	11.3	10.3	10.3	5.2	9.1	24.9													E 2000 58.3
		N	E	X	T	L	E	F	T												E 2000 65.1
	21.4	8.6	7.1	7.8	6	8	7.4	7.6	6.6	6	21.4										E 2000 65.1

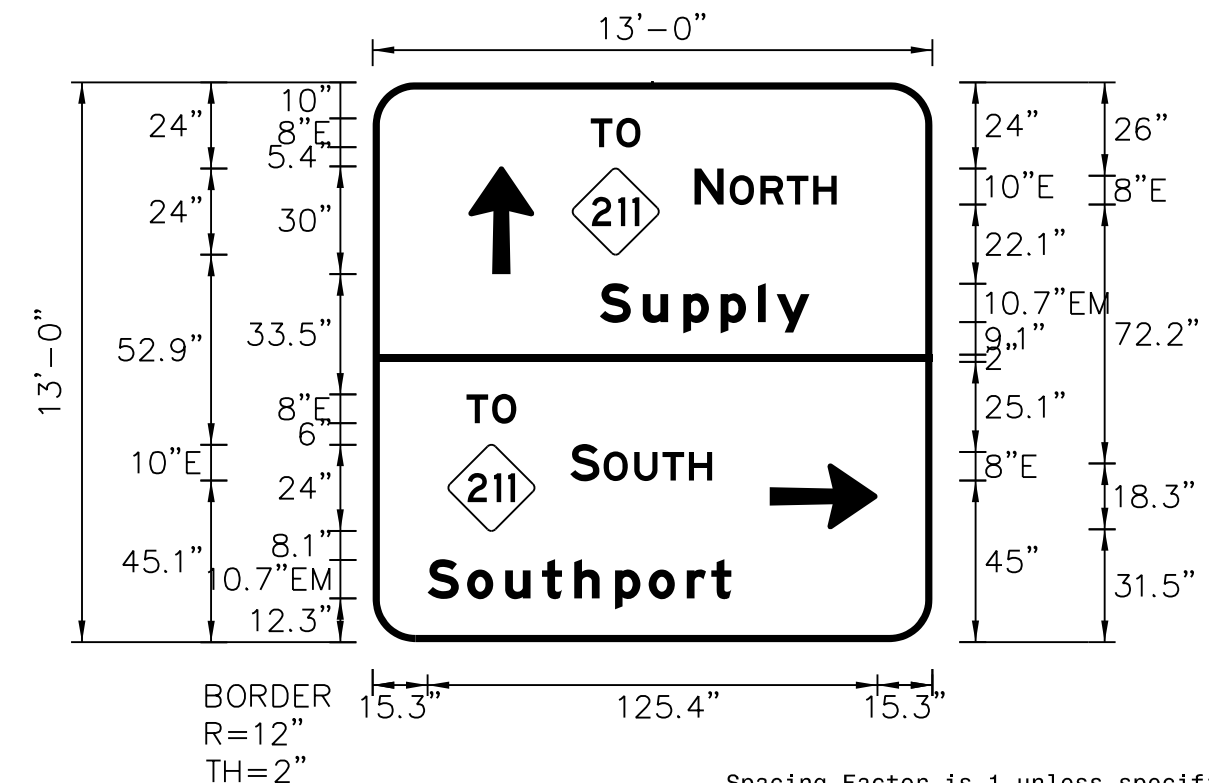
SIGN NUMBER: 111
 TYPE: A
 QUANTITY: 1
 SIGN WIDTH: 13'-0"
 HEIGHT: 13'-0"
 TOTAL AREA: 169.0 Sq.Ft.
 BORDER TYPE: FLUSH
 RECESS: 0"
 WIDTH: 2"
 RADII: 12"
 NO. Z BARS: 4
 LENGTH: 148.0

BACKG COLOR: Green
 COPY COLOR: White

SYMBOL	X	Y	WID	HT
M1-5-3-24-80	55.7	108	24	24
Type A Arrow	26.7	102.5	18.3	30
M1-5-3-24-80	21.1	31	24	24
Type A Arrow	110.7	31.5	18.3	30

MAT'L: 0.125" ALUMINUM

DESIGN BY: NKV
 PROJECT ID: R-5021
 CHECKED BY: TRT/ADK
 DIV: 03
 DATE: April 2018



- NOTES:
- Legend and border shall be direct applied Grade C reflective sheeting.
 - Arrows and shields shall be Grade C reflective sheeting on 0.032" aluminum and demountable.
 - Background shall be Grade C reflective sheeting.

LETTER POSITIONS

Letter spacings are to start of next letter

	T	O																			Series/Size Text Length
	60.8	7.1	6.7	81.4																	E 2000 13.8
		N	O	R	T	H															E 2000 39.6
	89.7	8.1	1.7	8.6	7.4	7.4	6.5	26.7													E 2000 39.6
		S	U	P	P	L	I	Y													EM 2000 58.4
	63.3	12	11.3	10.4	10.4	5.2	9.1	34.3													E 2000 58.4
		T	O																		E 2000 13.8
	26.2	7.1	6.7	116																	E 2000 13.8
		S	O	U	T	H															E 2000 39.1
	55.1	8.1	1.2	8.6	7.8	7.4	6.5	61.4													E 2000 39.1
		S	O	U	T	H	P	O	R	T											EM 2000 84.6
	15.3	11	10.6	10.3	9	11.3	9.4	10.6	6.8	5.6	56										E 2000 84.6

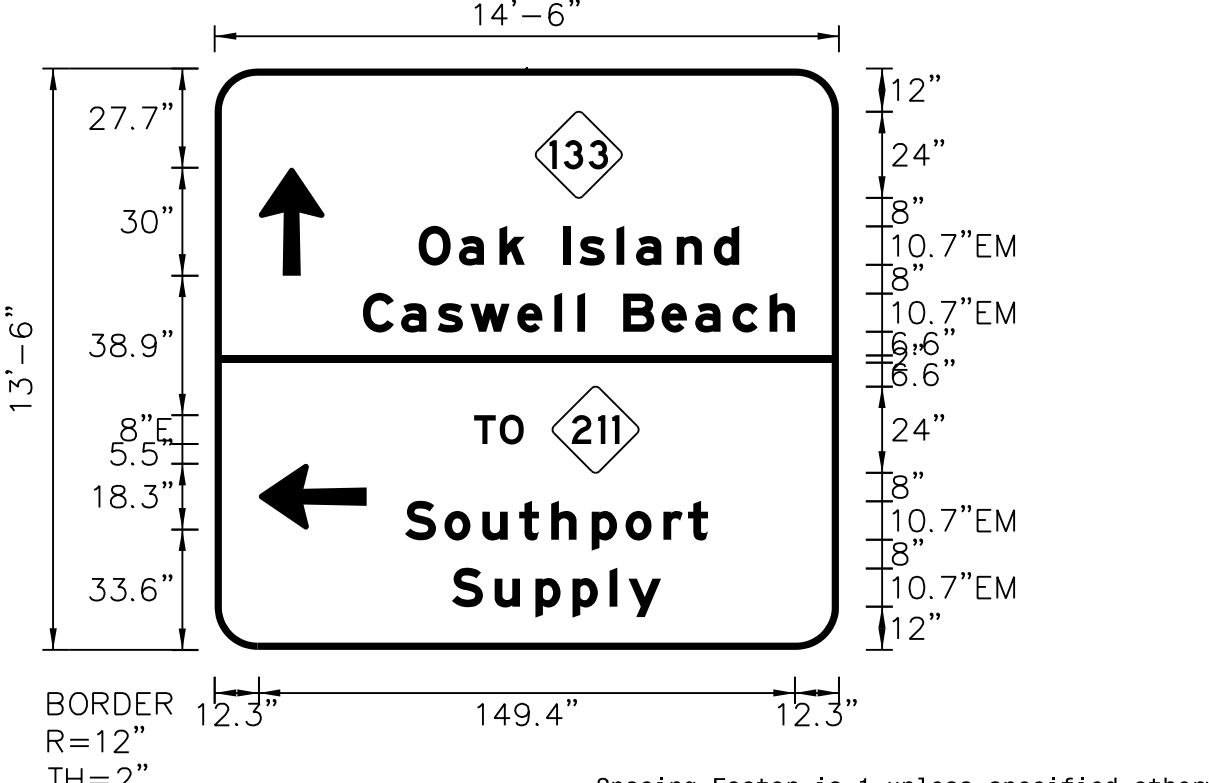
SIGN NUMBER: 113
 TYPE: A
 QUANTITY: 1
 SIGN WIDTH: 14'-6"
 HEIGHT: 13'-6"
 TOTAL AREA: 195.8 Sq.Ft.
 BORDER TYPE: FLUSH
 RECESS: 0"
 WIDTH: 2"
 RADII: 12"
 NO. Z BARS: 4
 LENGTH: 166.0

BACKG COLOR: Green
 COPY COLOR: White

SYMBOL	X	Y	WID	HT
M1-5-3-24-80	89.5	126	24	24
Type A Arrow	12.3	104.3	18.3	30
M1-5-3-24-80	94.2	49.4	24	24
Type A Arrow	12.3	33.5	18.3	30

MAT'L: 0.125" ALUMINUM

DESIGN BY: NKV
 PROJECT ID: R-5021
 CHECKED BY: TRT/ADK
 DIV: 03
 DATE: April 2018



- NOTES:
- Legend and border shall be direct applied Grade C reflective sheeting.
 - Arrows and shields shall be Grade C reflective sheeting on 0.032" aluminum and demountable.
 - Background shall be Grade C reflective sheeting.

LETTER POSITIONS

Letter spacings are to start of next letter

	O	a	k	i	s	i	a	n	d												Series/Size Text Length
	56.8	11.2	11.3	7	10.7	4.6	10.3	5.4	11.3	10.3	7	27.8									EM 2000 89.3
		C	a	s	w	e	l	i	B	e	a	c	h								EM 2000 120.4
	41.3	10.7	10.1	9.2	13	10.3	6.4	2.1	10.7	10.7	9.4	10.3	10.3	7	12.3						E 2000 120.4
		T	O																		E 2000 13.8
	72.3	7.1	6.7	87.8																	E 2000 13.8
		S	O	U	T	H	P	O	R	T											EM 2000 84.4
	53	11	10.6	10.2	9	11.3	9.4	10.6	6.8	5.5	36.6										E 2000 84.4
		S	O	U	T	H	P	O	R	T											EM 2000 58.3
	66.1	12	11.3	10.3	10.3	5.2	9.1	49.6													E 2000 58.3