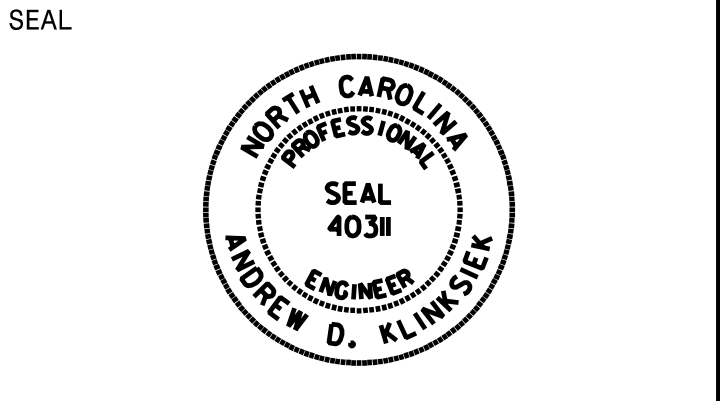


APPROVED: Andrew D. Klinkosick  
E-3078F9459E448

DATE: 9/2/2021



**DOCUMENT NOT CONSIDERED FINAL  
UNLESS ALL SIGNATURES COMPLETED**

SIGN NUMBER: 106,117      BACKG COLOR: Green  
 TYPE: A                      COPY COLOR: White  
 QUANTITY: 2

SYMBOL	X	Y	WID	HT
M1-5-3-24-80	58.9	66.6	24	24

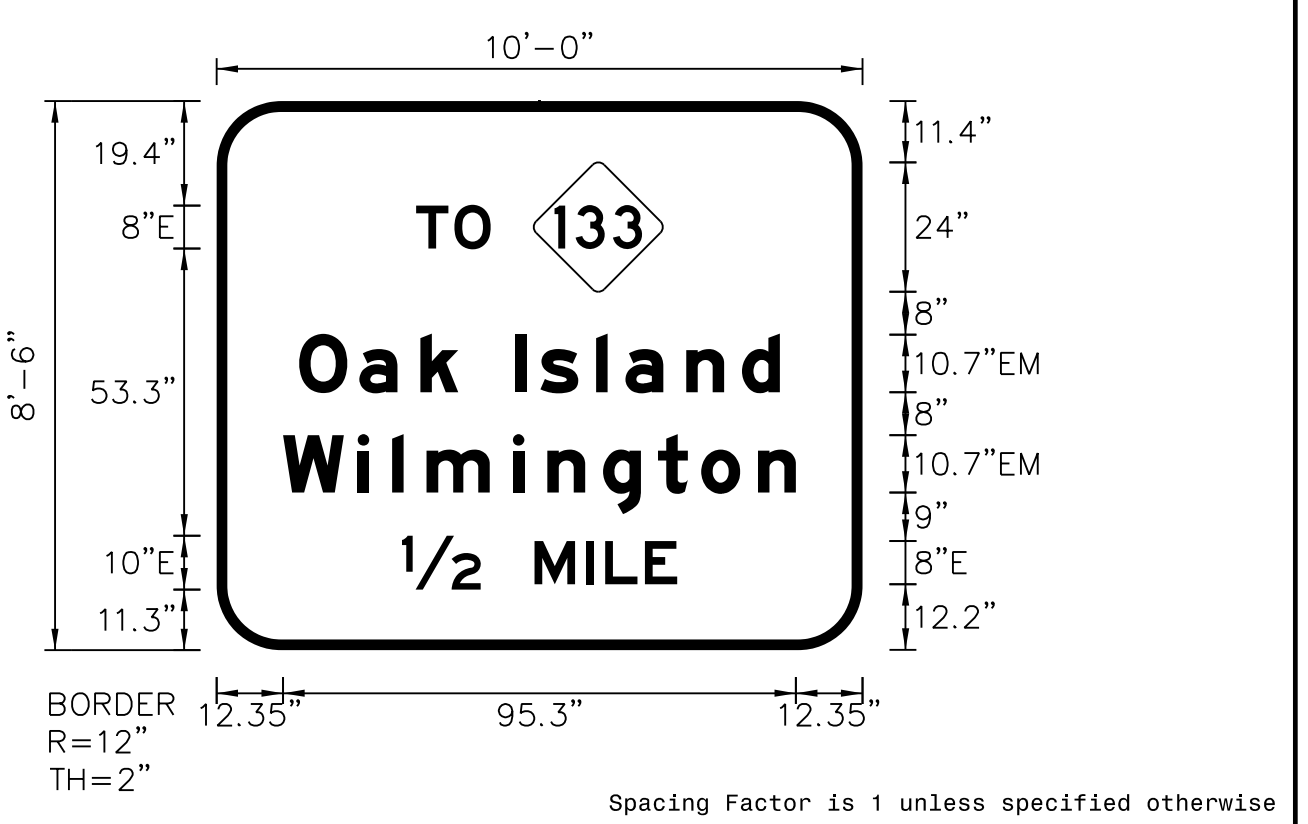
SIGN WIDTH: 10'-0"  
 HEIGHT: 8'-6"  
 TOTAL AREA: 85.0 Sq.Ft.

BORDER TYPE: FLUSH  
 RECESS: 0"  
 WIDTH: 2"  
 RADII: 12"

MAT'L: 0.125" ALUMINUM

NO. Z BARS: 3  
 LENGTH: 112.0

DESIGN BY: NKV                      CHECKED BY: TRT/ADK  
 PROJECT ID: R-5021                  DIV: 03                      DATE: April 2018



- NOTES:
- Legend and border shall be direct applied Grade C reflective sheeting.
  - Shield shall be Grade C reflective sheeting on 0.032" aluminum and demountable.
  - Background shall be Grade C reflective sheeting.
  - Proposed support spacing is 7.50'.

LETTER POSITIONS

Letter spacings are to start of next letter													Series/Size Text Length
37.1	7.1	6.7	69.1										E 2000 13.8
15.3	11.2	11.3	7	10.7	4.6	10.3	5.4	11.3	10.3	7	15.3		EM 2000 89.3
12.4	13.9	6.4	6.4	16	6.4	10.3	10.2	8	10.6	7	12.4		EM 2000 95.3
34.4	14.7	10	9.6	3.5	7.4	6	34.4						E 2000 51.1

SIGN NUMBER: 107                  BACKG COLOR: Green  
 TYPE: A                      COPY COLOR: White  
 QUANTITY: 1

SYMBOL	X	Y	WID	HT
M1-5-3-24-80	60.9	10	24	24

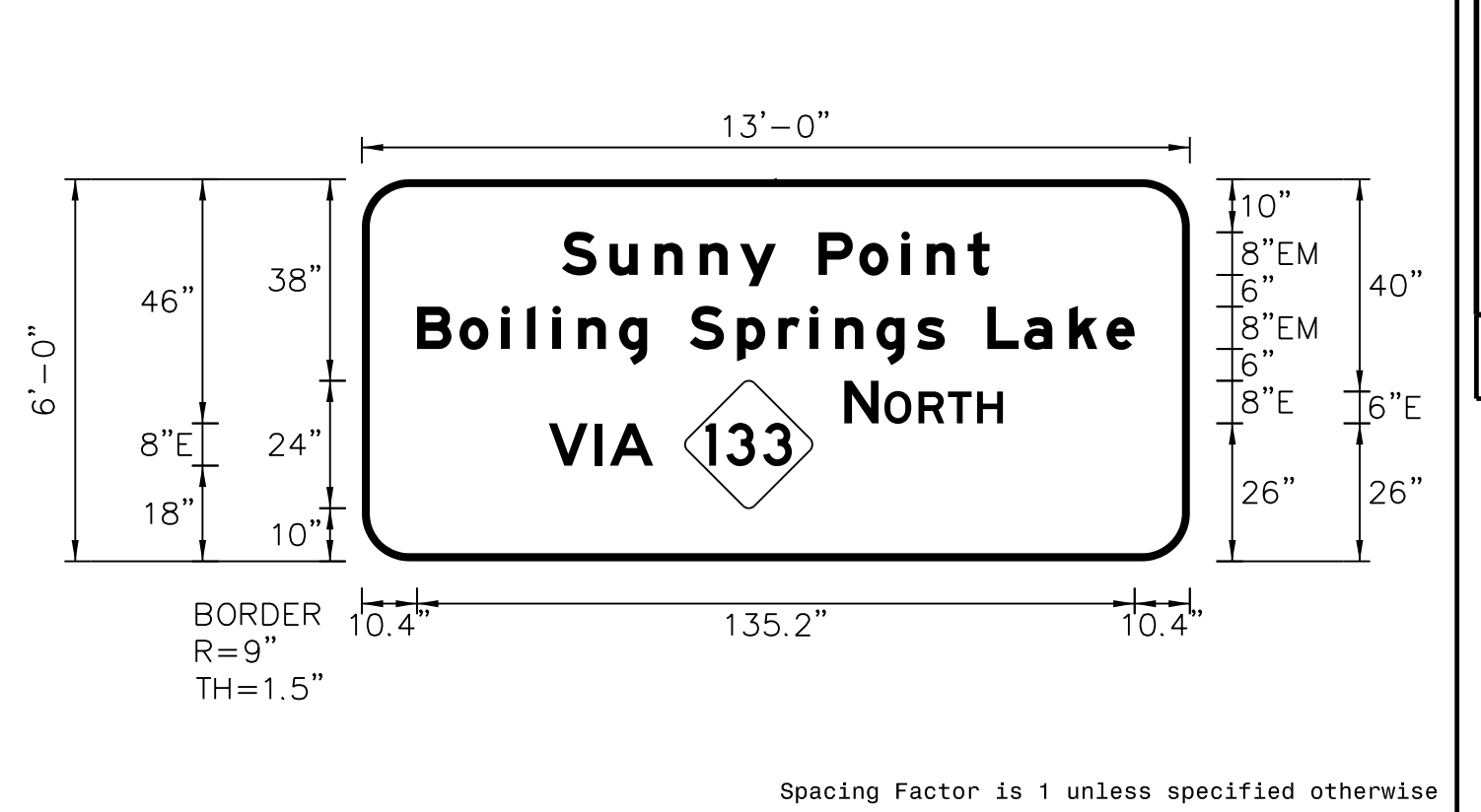
SIGN WIDTH: 13'-0"  
 HEIGHT: 6'-0"  
 TOTAL AREA: 78.0 Sq.Ft.

BORDER TYPE: FLUSH  
 RECESS: 0"  
 WIDTH: 1.5"  
 RADII: 9"

MAT'L: 0.125" ALUMINUM

NO. Z BARS: 2  
 LENGTH: 148.0

DESIGN BY: NKV                      CHECKED BY: TRT/ADK  
 PROJECT ID: R-5021                  DIV: 03                      DATE: April 2018



- NOTES:
- Legend and border shall be direct applied Grade C reflective sheeting.
  - Shield shall be Grade C reflective sheeting on 0.032" aluminum and demountable.
  - Background shall be Grade C reflective sheeting.

LETTER POSITIONS

Letter spacings are to start of next letter													Series/Size Text Length
37.7	9	8.5	8.5	7.6	6.8	8	7.7	7.9	4.8	7.7	4.2	37.7	EM 2000 80.6
10.4	8	7.9	4.8	4.8	4.8	7.8	5.3	8	9	7.8	5.9	4.8	EM 2000 135.2
90.9	6.5	1.1	6.4	5.5	5.5	4.9	35.2						E 2000 29.9
35.2	8.7	2.8	8.2	101.1									E 2000 19.7

SIGN NUMBER: 108                  BACKG COLOR: Green  
 TYPE: A                      COPY COLOR: White  
 QUANTITY: 1

SYMBOL	X	Y	WID	HT
M1-5-3-24-80	60.7	10	24	24

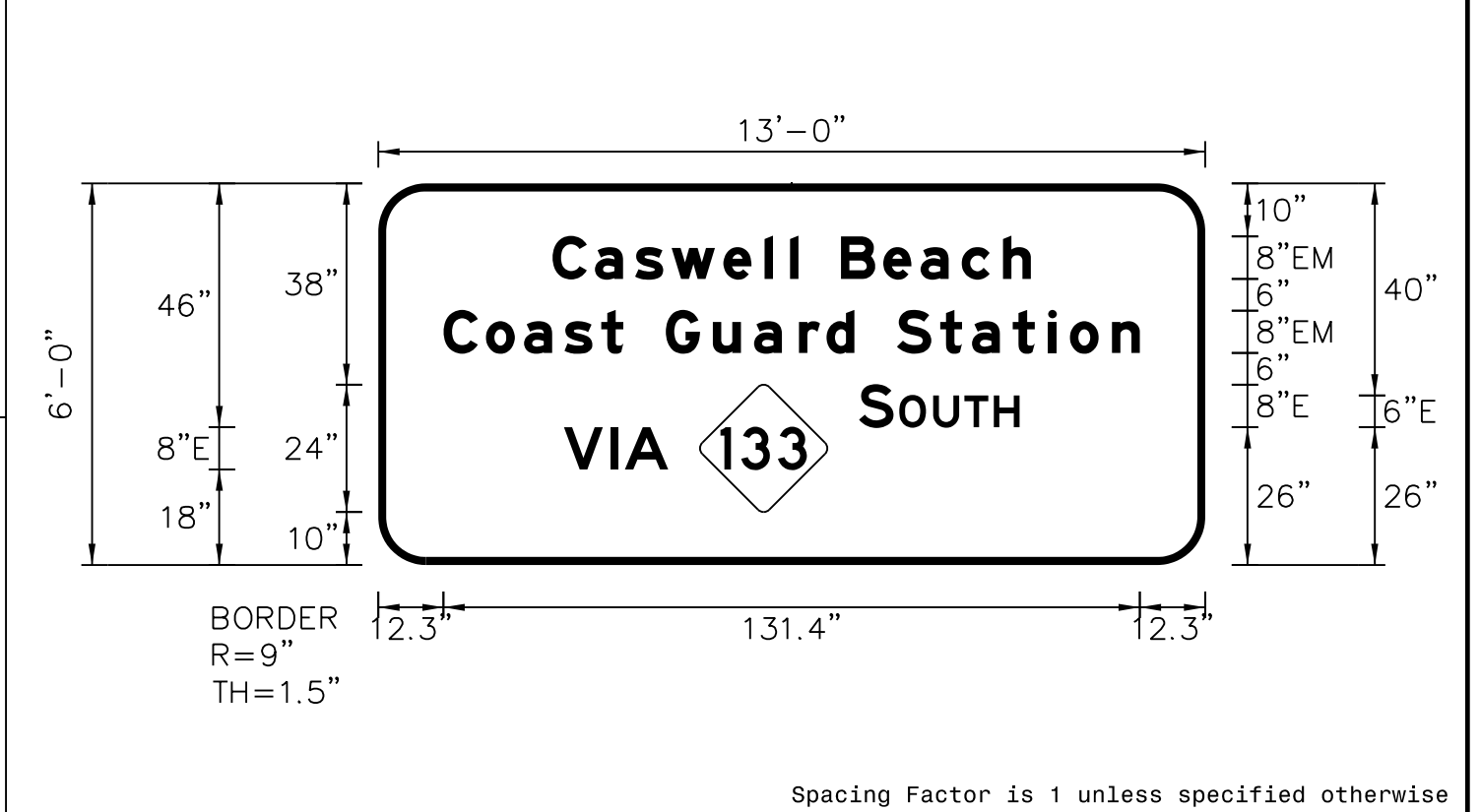
SIGN WIDTH: 13'-0"  
 HEIGHT: 6'-0"  
 TOTAL AREA: 78.0 Sq.Ft.

BORDER TYPE: FLUSH  
 RECESS: 0"  
 WIDTH: 1.5"  
 RADII: 9"

MAT'L: 0.125" ALUMINUM

NO. Z BARS: 2  
 LENGTH: 148.0

DESIGN BY: NKV                      CHECKED BY: TRT/ADK  
 PROJECT ID: R-5021                  DIV: 03                      DATE: April 2018



- NOTES:
- Legend and border shall be direct applied Grade C reflective sheeting.
  - Shield shall be Grade C reflective sheeting on 0.032" aluminum and demountable.
  - Background shall be Grade C reflective sheeting.

LETTER POSITIONS

Letter spacings are to start of next letter													Series/Size Text Length
32.9	8	7.6	7	9.8	7.8	4.8	1.6	8	8	7	7.8	5.3	EM 2000 90.2
12.3	8	7.2	7.6	7	4.2	8	8.9	7.8	8.5	5.2	5.3	8	EM 2000 131.4
90.7	6.5	1.1	6.4	5.9	5.5	4.9	35						E 2000 30.3
35	8.7	2.8	8.2	101.3									E 2000 19.7

SIGN NUMBER: 109                  BACKG COLOR: Green  
 TYPE: A                      COPY COLOR: White  
 QUANTITY: 1

SYMBOL	X	Y	WID	HT
Type A Arrow	13	107.4	18.3	30
M1-5-3-24-80	64.6	106.9	24	24
M1-5-3-24-80	20.9	29.8	24	24
Type A Arrow	119	30.3	18.3	30

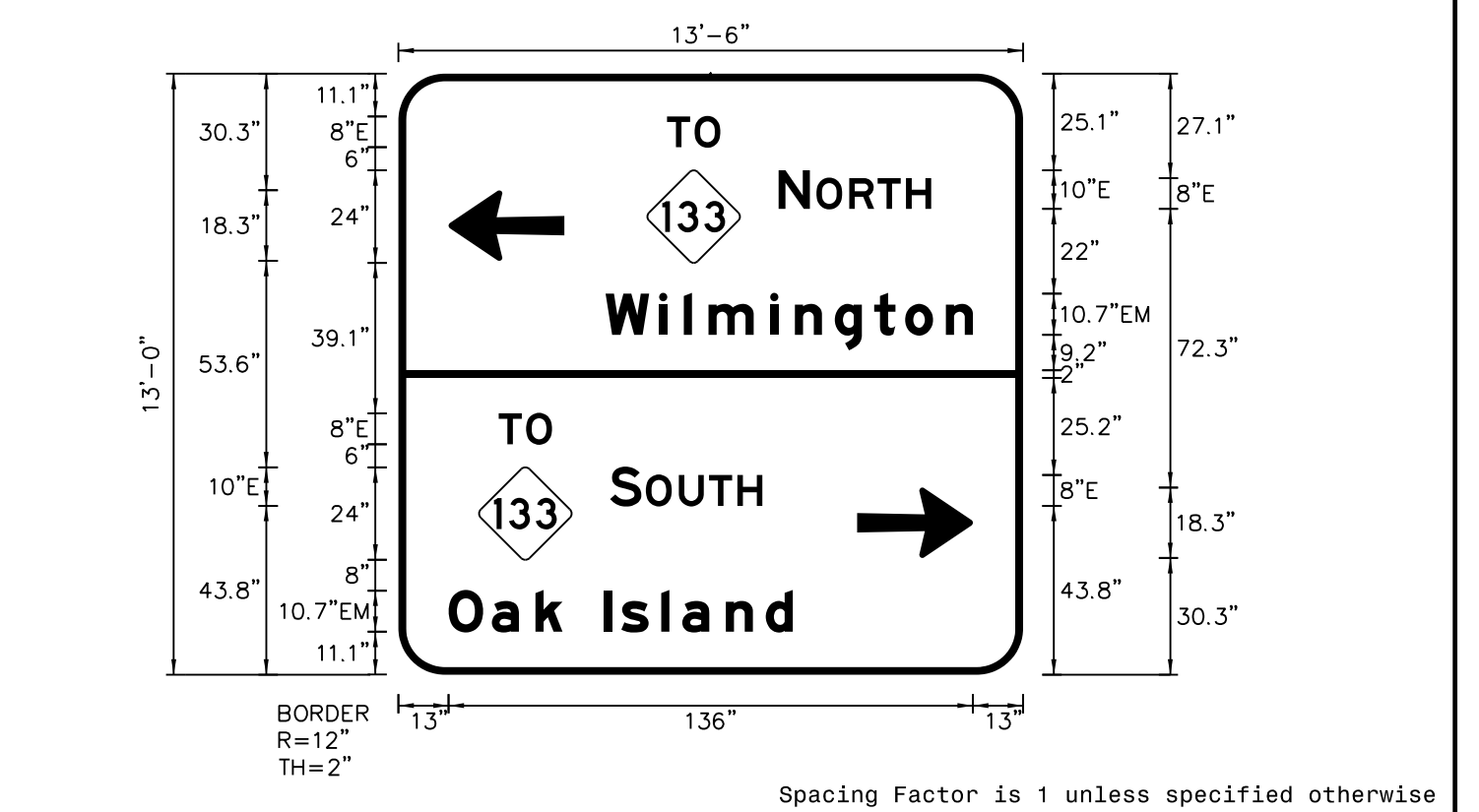
SIGN WIDTH: 13'-6"  
 HEIGHT: 13'-0"  
 TOTAL AREA: 175.5 Sq.Ft.

BORDER TYPE: FLUSH  
 RECESS: 0"  
 WIDTH: 2"  
 RADII: 12"

MAT'L: 0.125" ALUMINUM

NO. Z BARS: 4  
 LENGTH: 154.0

DESIGN BY: JTT                      CHECKED BY: TRT/ADK  
 PROJECT ID: R-5021                  DIV: 03                      DATE: April 2018



- NOTES:
- Legend and border shall be direct applied Grade C reflective sheeting.
  - Arrows and shields shall be Grade C reflective sheeting on 0.032" aluminum and demountable.
  - Background shall be Grade C reflective sheeting.

LETTER POSITIONS

Letter spacings are to start of next letter													Series/Size Text Length
69.7	7.1	6.7	78.5										E 2000 13.8
98.6	8.1	1.7	8.6	7.4	7.4	6.5	23.9						E 2000 39.6
53.7	13.9	6.4	6.4	16	6.4	10.3	10.2	8	10.6	7	13		EM 2000 95.3
26	7.1	6.7	122.2										E 2000 13.8
54.9	8.1	1.2	8.6	7.8	7.4	6.5	67.6						E 2000 39.5
13	11.2	11.3	7	10.7	4.6	10.3	5.4	11.3	10.3	7	59.7		EM 2000 89.3