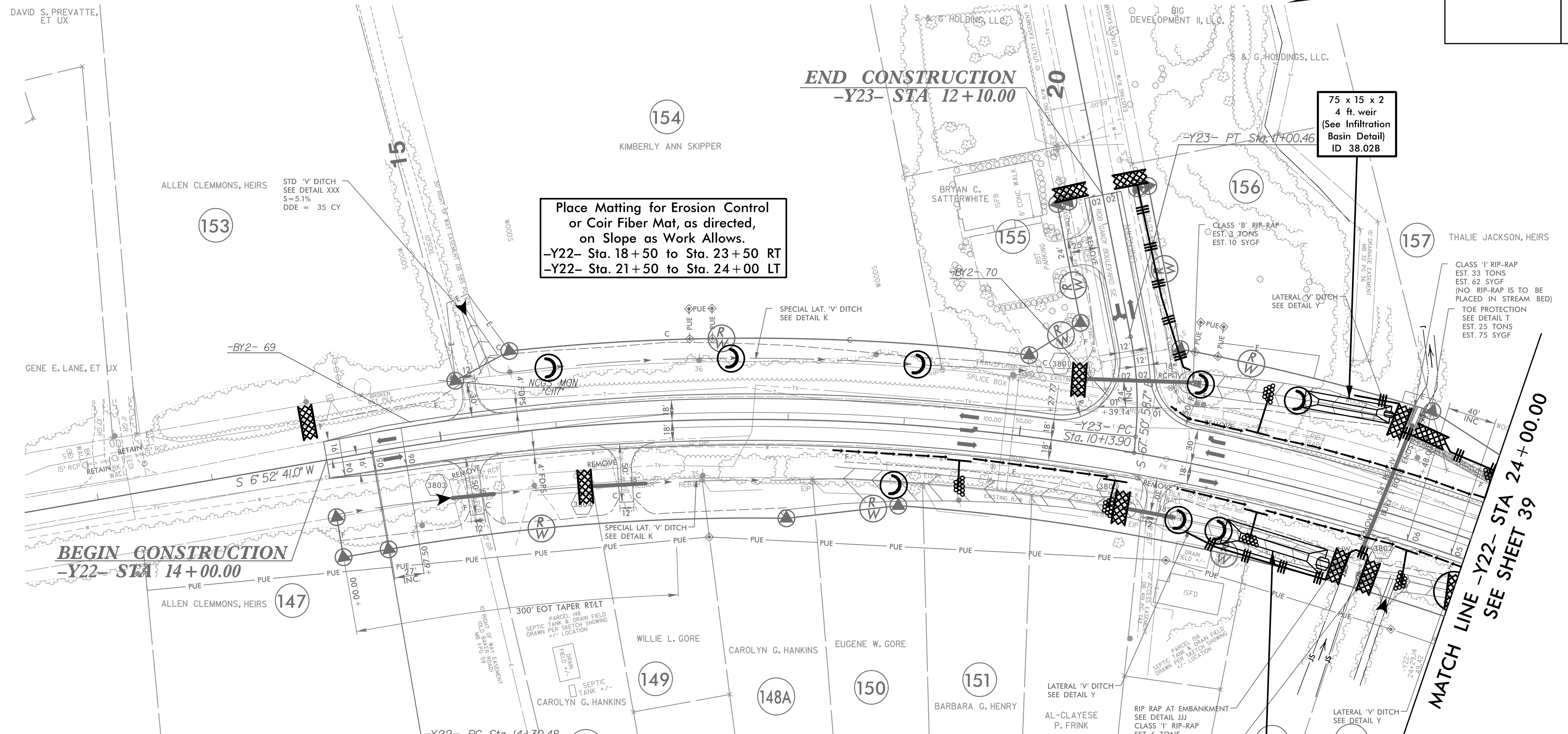


NOTE: UTILIZE COIR FIBER MATTING ADJACENT TO WETLANDS /JURISDICTIONAL AREAS, AND AS DIRECTED

PROJECT REFERENCE NO.	SHEET NO.
R-5021	EC-77/CONST.38
RW SHEET NO.	36
ROADWAY DESIGN ENGINEER	HYDRAULICS ENGINEER



Place Matting for Erosion Control or Coir Fiber Mat, as directed, on Slope as Work Allows.  
 -Y22- Sta. 18+50 to Sta. 23+50 RT  
 -Y22- Sta. 21+50 to Sta. 24+00 LT

75 x 15 x 2  
 4 ft. weir  
 (See Infiltration Basin Detail)  
 ID 38.02B

90 x 22 x 2  
 5 ft. weir  
 (See Infiltration Basin Detail)  
 ID 38.01B

