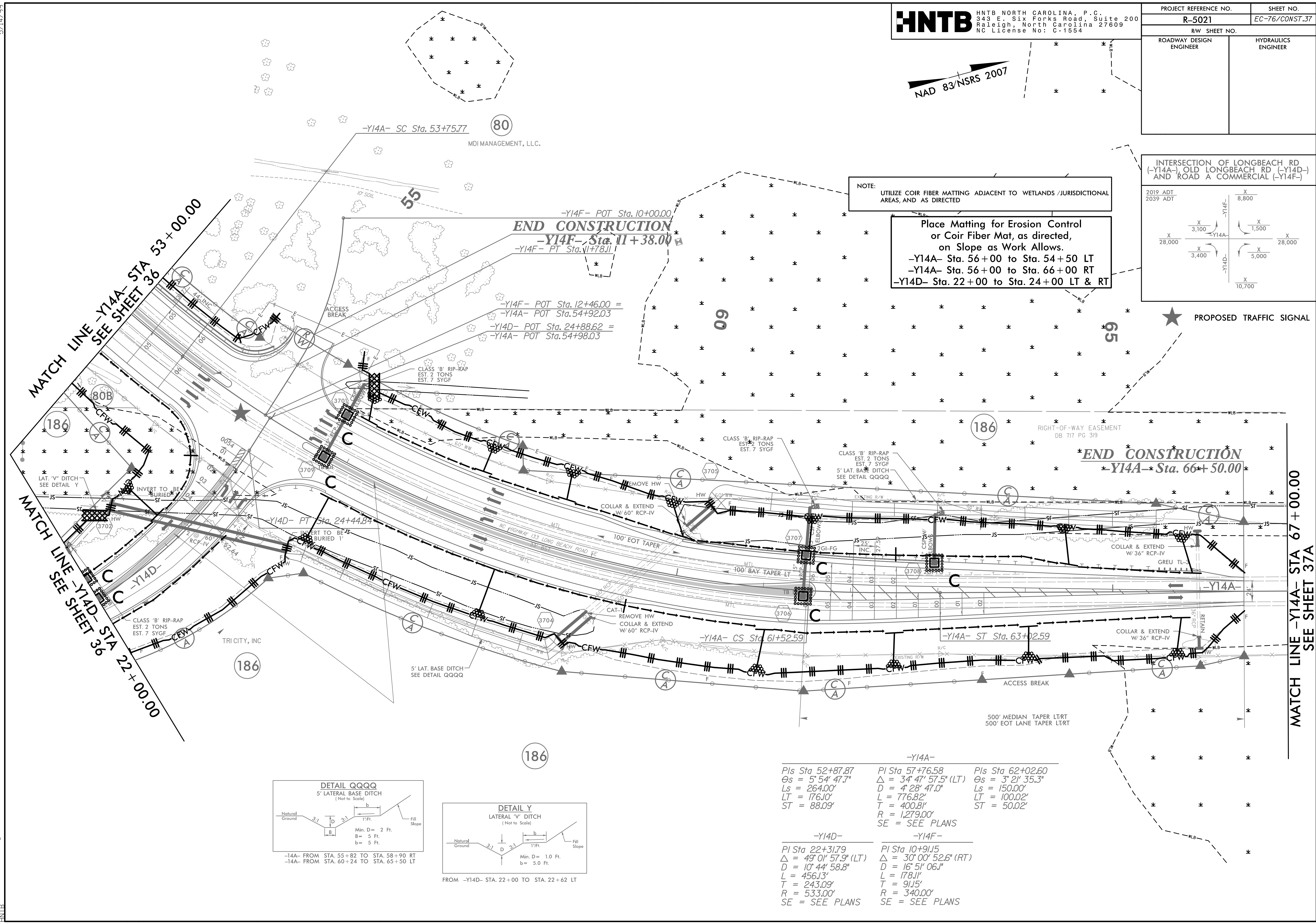


5/14/99

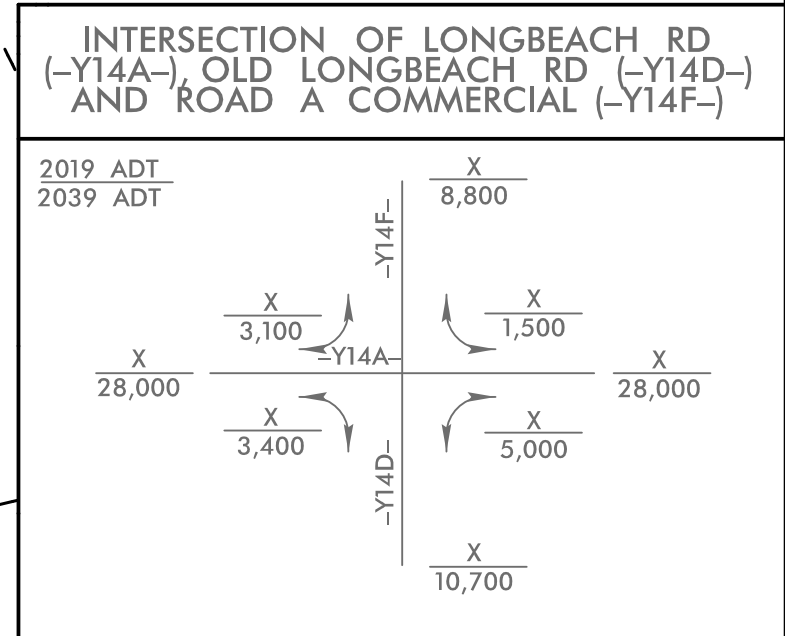
PROJECT REFERENCE NO.	SHEET NO.
R-5021	EC-76/CONST.37
RW SHEET NO.	
ROADWAY DESIGN ENGINEER	HYDRAULICS ENGINEER

NAD 83/NSRS 2007



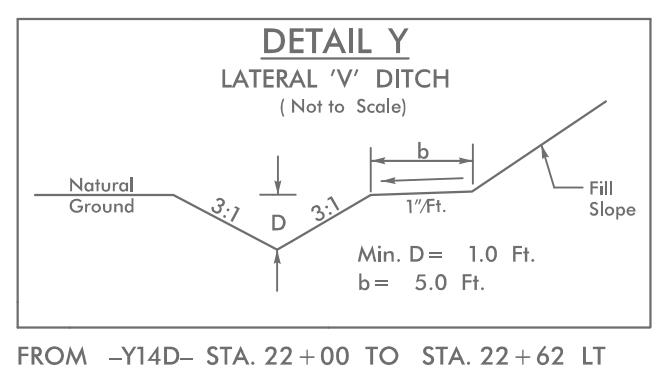
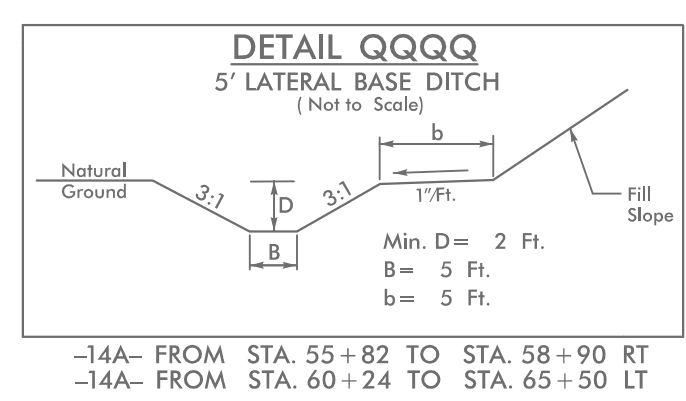
NOTE: UTILIZE COIR FIBER MATTING ADJACENT TO WETLANDS / JURISDICTIONAL AREAS, AND AS DIRECTED

Place Matting for Erosion Control or Coir Fiber Mat, as directed, on Slope as Work Allows.
 -Y14A- Sta. 56+00 to Sta. 54+50 LT
 -Y14A- Sta. 56+00 to Sta. 66+00 RT
 -Y14D- Sta. 22+00 to Sta. 24+00 LT & RT



PROPOSED TRAFFIC SIGNAL

4/22/2021 EC_PSH37.dgn



-Y14A-		
PI Sta 52+87.87	PI Sta 57+76.58	PI Sta 62+02.60
Os = 5° 54' 47.7"	Δ = 34° 47' 57.5" (LT)	Os = 3° 21' 35.3"
Ls = 264.00'	D = 4° 28' 47.0"	Ls = 150.00'
LT = 176.10'	L = 776.82'	LT = 100.02'
ST = 88.09'	T = 400.81'	ST = 50.02'
	R = 1,279.00'	
	SE = SEE PLANS	
-Y14D-		
PI Sta 22+31.79	PI Sta 10+91.15	
Δ = 49° 01' 57.9" (LT)	Δ = 30° 00' 52.6" (RT)	
D = 10° 44' 58.8"	D = 16° 51' 06.1"	
L = 456.13'	L = 178.11'	
T = 243.09'	T = 91.15'	
R = 533.00'	R = 340.00'	
SE = SEE PLANS	SE = SEE PLANS	