

5/14/99

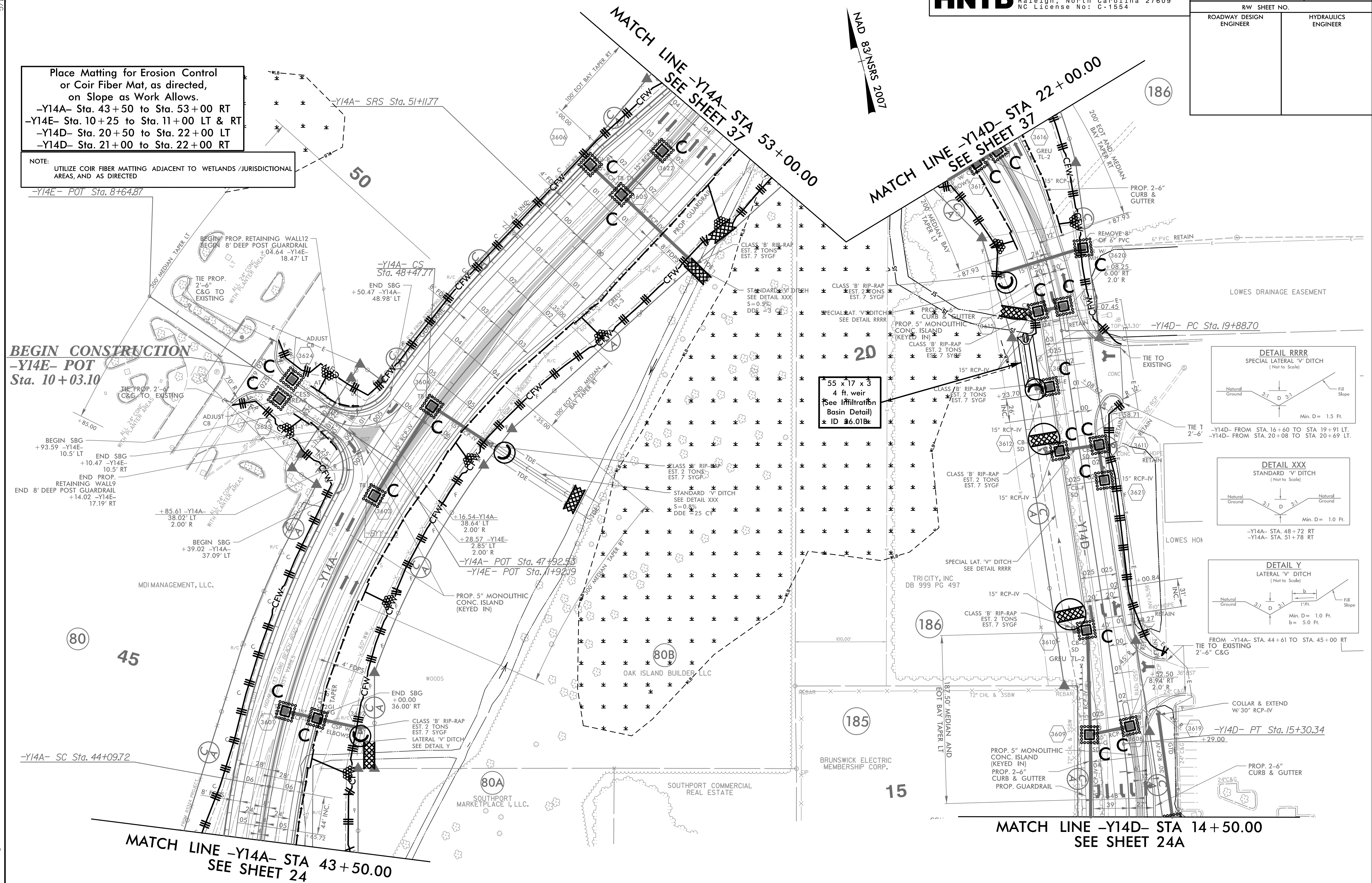
PROJECT REFERENCE NO.	SHEET NO.
R-5021	EC-75/CONST.36
RW SHEET NO.	
ROADWAY DESIGN ENGINEER	HYDRAULICS ENGINEER

Place Matting for Erosion Control or Coir Fiber Mat, as directed, on Slope as Work Allows.

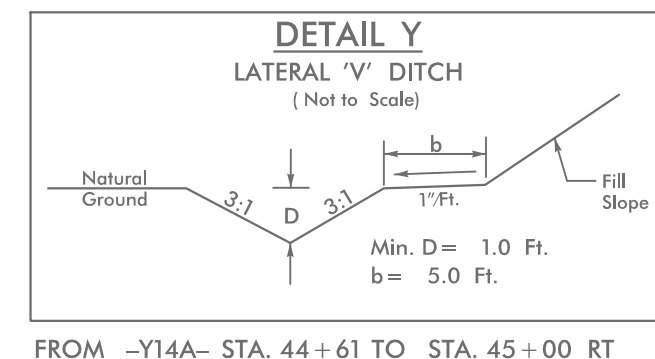
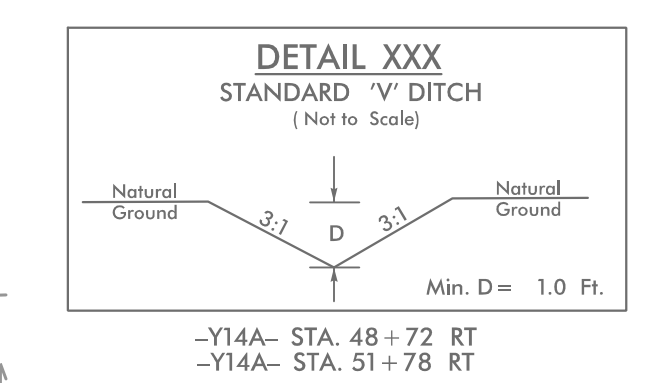
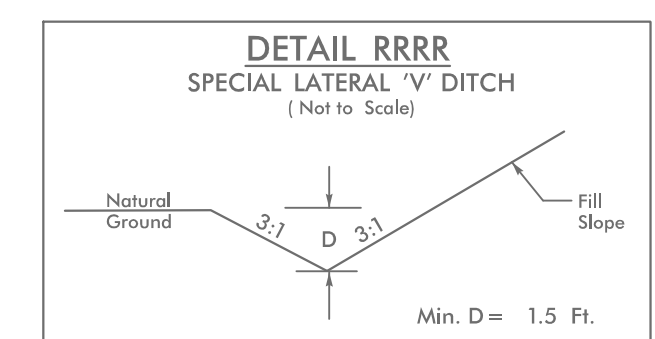
-Y14A- Sta. 43+50 to Sta. 53+00 RT
 -Y14E- Sta. 10+25 to Sta. 11+00 LT & RT
 -Y14D- Sta. 20+50 to Sta. 22+00 LT
 -Y14D- Sta. 21+00 to Sta. 22+00 RT

NOTE: UTILIZE COIR FIBER MATTING ADJACENT TO WETLANDS / JURISDICTIONAL AREAS, AND AS DIRECTED

BEGIN CONSTRUCTION
 -Y14E- POT
 Sta. 10+03.10



55 x 17 x 3
 4 ft. weir
 (See Infiltration Basin Detail)
 ID 36.01Bz



DO NOT DISTURB FENCE AROUND
 BRUNSWICK ELECTRIC PARCEL

10/28/2021
 R-5021-EC-PSH36.dgn
 HNTB