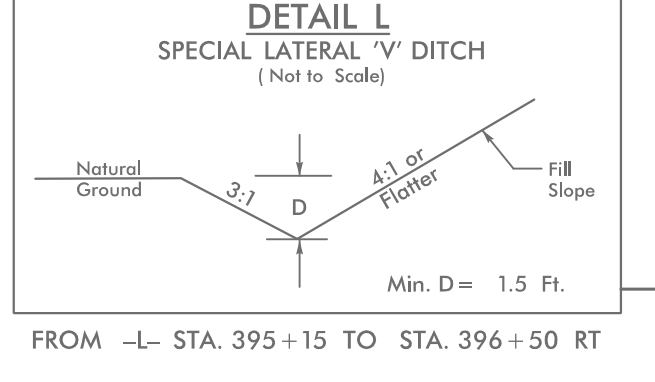
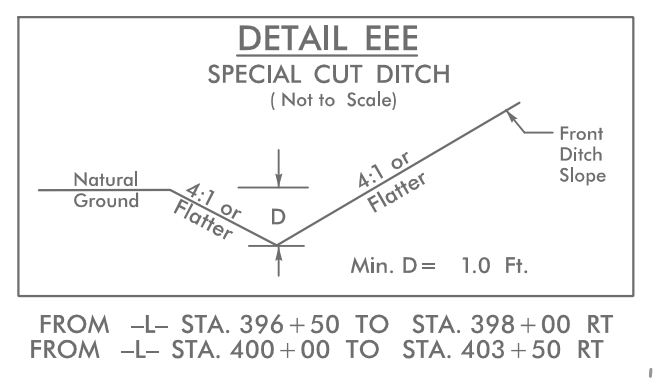
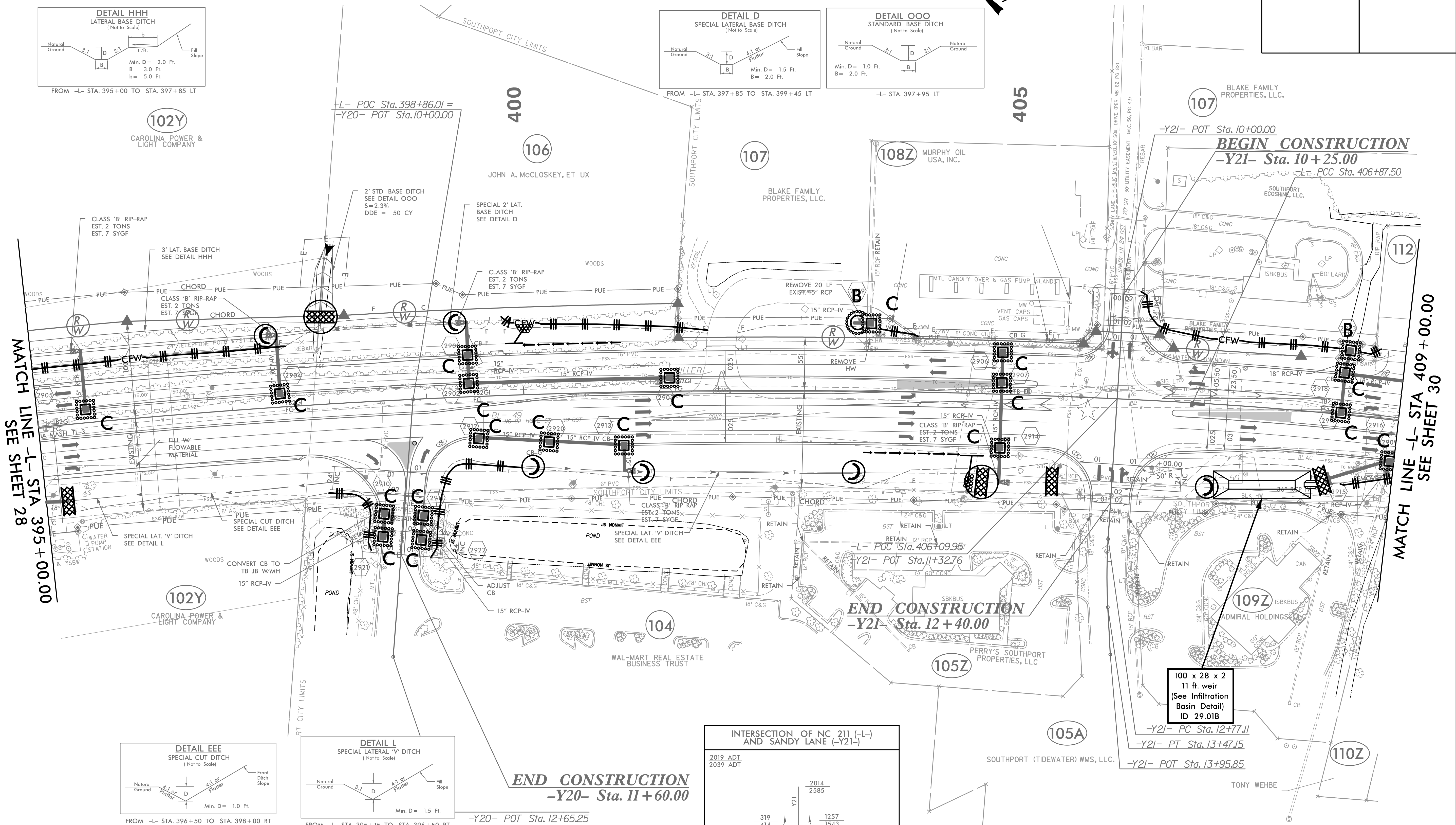
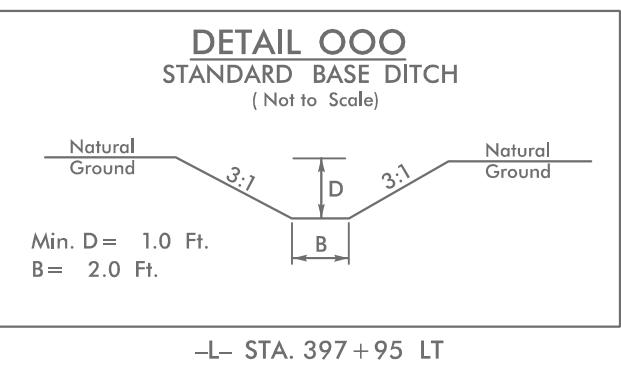
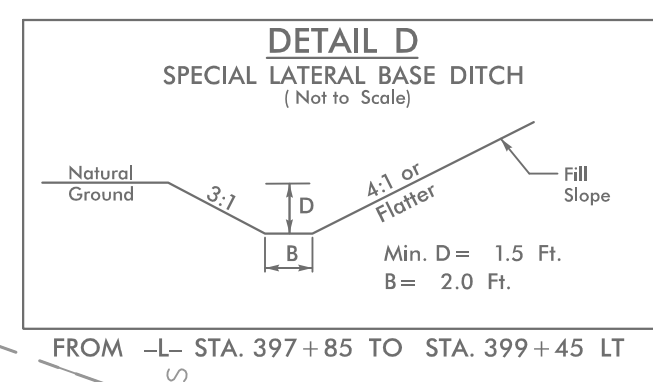
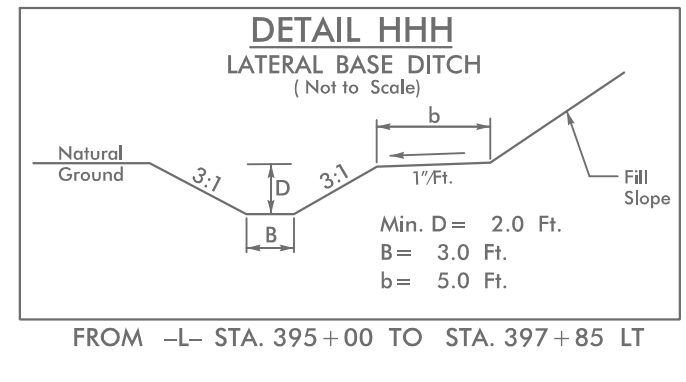


5/14/99

PROJECT REFERENCE NO.	SHEET NO.
R-5021	EC-67/CONST.29
RW SHEET NO.	
ROADWAY DESIGN ENGINEER	HYDRAULICS ENGINEER

NOTE: UTILIZE COIR FIBER MATTING ADJACENT TO WETLANDS /JURISDICTIONAL AREAS, AND AS DIRECTED

Place Matting for Erosion Control or Coir Fiber Mat, as directed, on Slope as Work Allows.
 -L- Sta. 395+00 to Sta. 397+50 LT
 -L- Sta. 399+50 to Sta. 401+00 LT
 -L- Sta. 403+50 to Sta. 404+50 RT



INTERSECTION OF NC 211 (-L-) AND SANDY LANE (-Y21-)

2019 ADT		2014	
2039 ADT		2585	
	319		1257
	414		1543
	22280		24476
	36185		39685
	2376		3604
	2757		5128
			6418
			8513

100 x 28 x 2
 11 ft. weir
 (See Infiltration
 Basin Detail
 ID 29.01B)

MATCH LINE -L- STA 395+00.00
 SEE SHEET 28

MATCH LINE -L- STA 409+00.00
 SEE SHEET 30

5/14/2021_EC_PSH29.dgn