

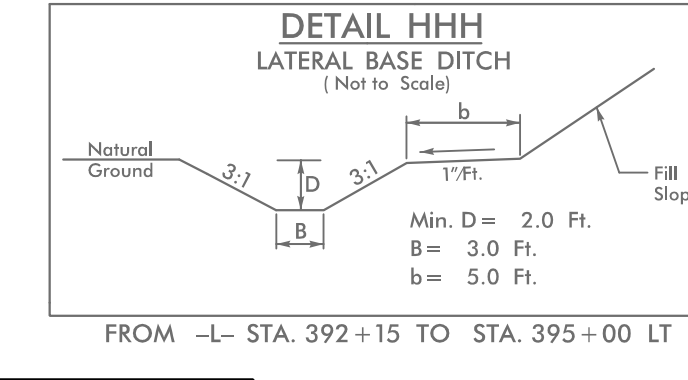
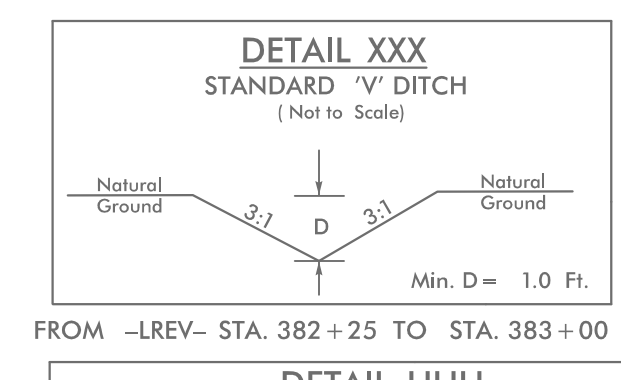
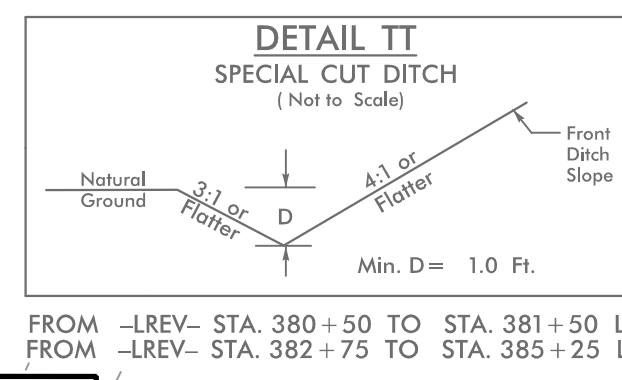
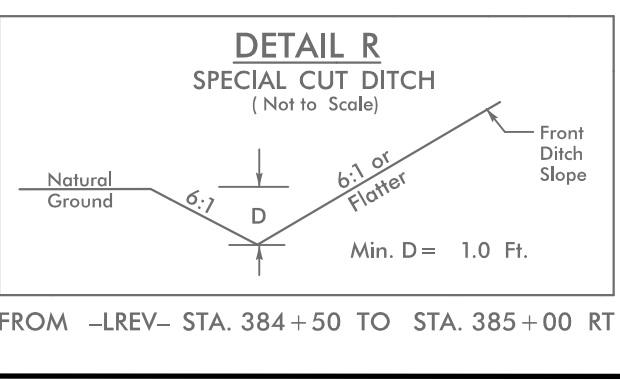
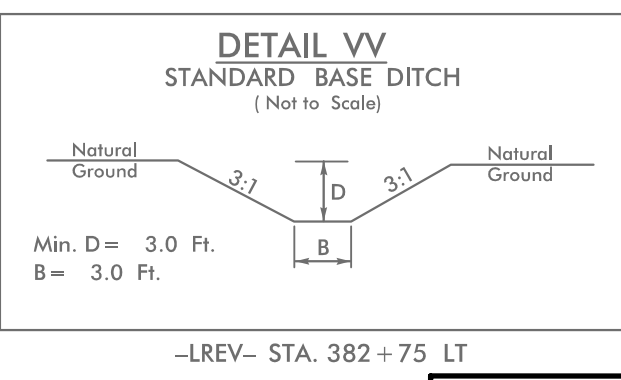
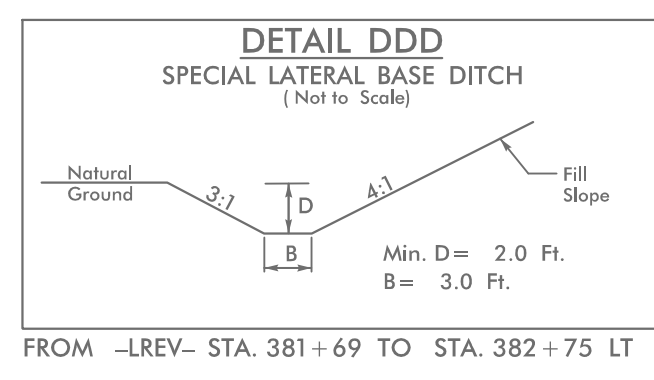
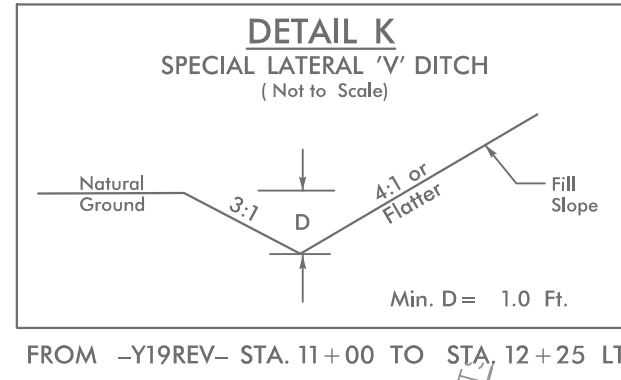
5/14/99

NOTE: UTILIZE COIR FIBER MATTING ADJACENT TO WETLANDS /JURISDICTIONAL AREAS, AND AS DIRECTED

**HNTB** HNTB NORTH CAROLINA, P.C.  
343 E. Six Forks Road, Suite 200  
Raleigh, North Carolina 27609  
NC License No: C-1554

PROJECT REFERENCE NO.	SHEET NO.
R-5021	EC-66/CONST.28
RW SHEET NO.	
ROADWAY DESIGN ENGINEER	HYDRAULICS ENGINEER

NAD 83 NSRS 2007

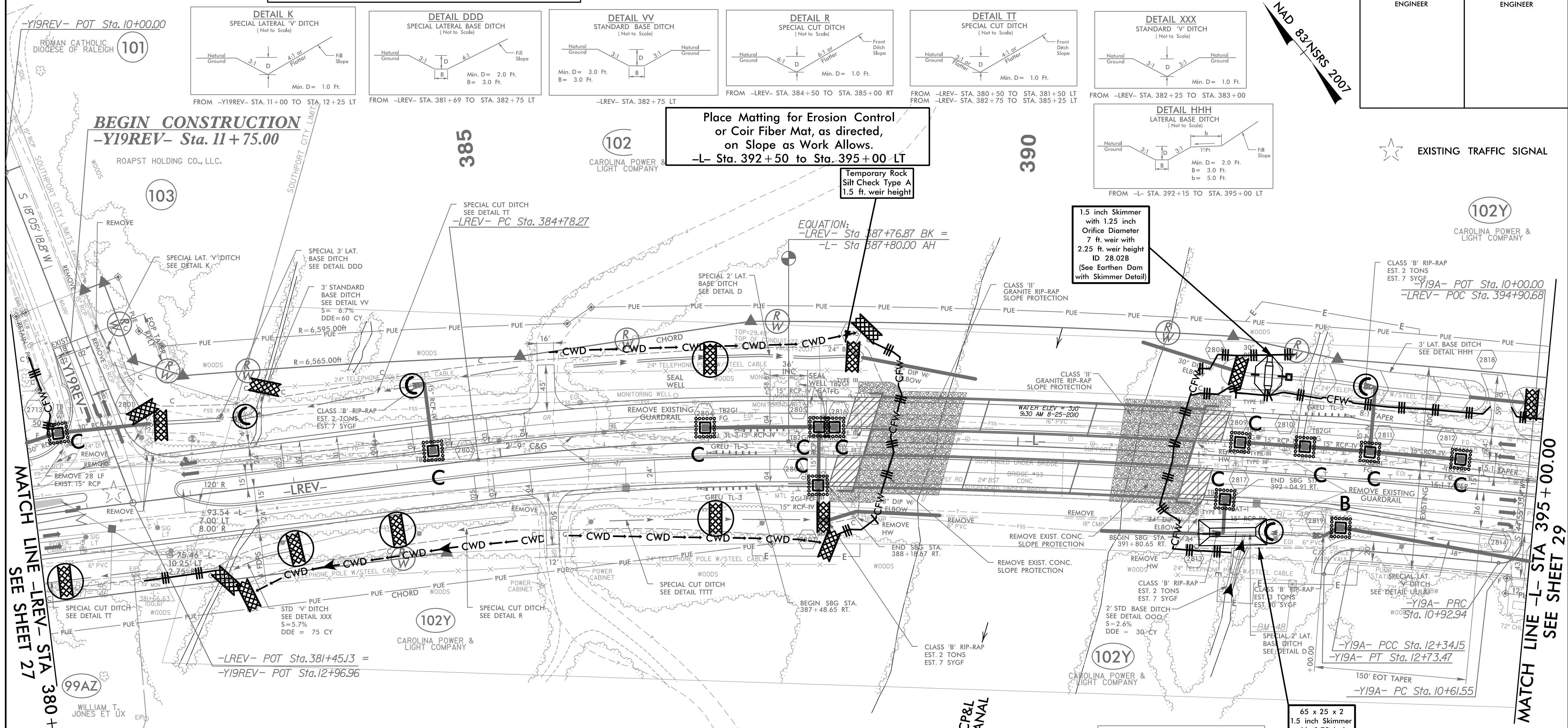
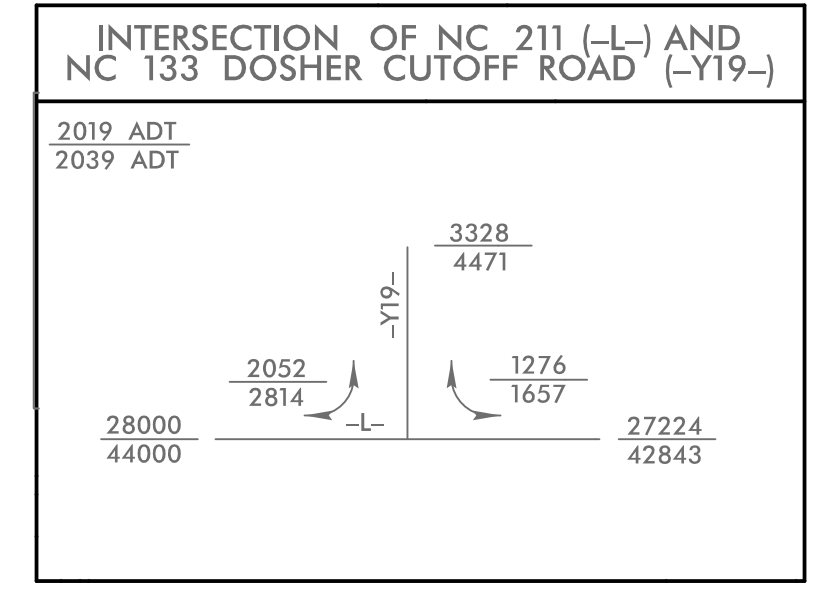
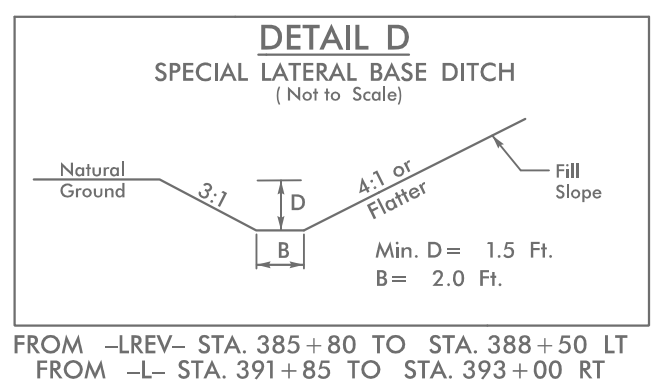
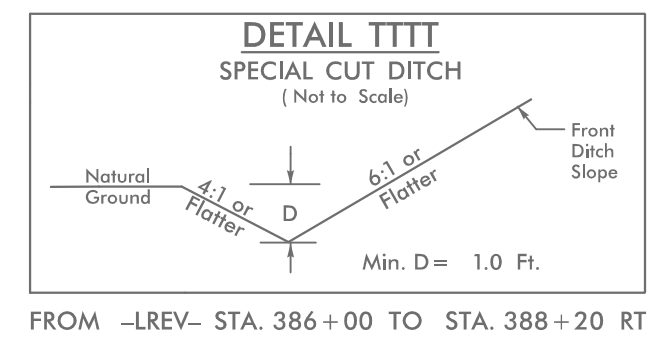
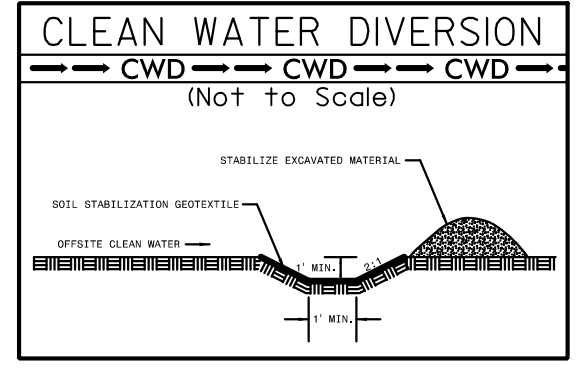


Place Matting for Erosion Control or Coir Fiber Mat, as directed, on Slope as Work Allows.  
-L- Sta. 392+50 to Sta. 395+00 LT

Temporary Rock Silt Check Type A  
1.5 ft. weir height

1.5 inch Skimmer with 1.25 inch Orifice Diameter  
7 ft. weir with 2.25 ft. weir height  
ID 28.02B  
(See Earthen Dam with Skimmer Detail)

65 x 25 x 2  
1.5 inch Skimmer with 0.75 inch Orifice Diameter  
9 ft. weir  
ID 28.03B



5/14/2001 L.E.C.\_PSH28.dgn