

5/14/99

Place Matting for Erosion Control
or Coir Fiber Mat, as directed,
on Slope as Work Allows.

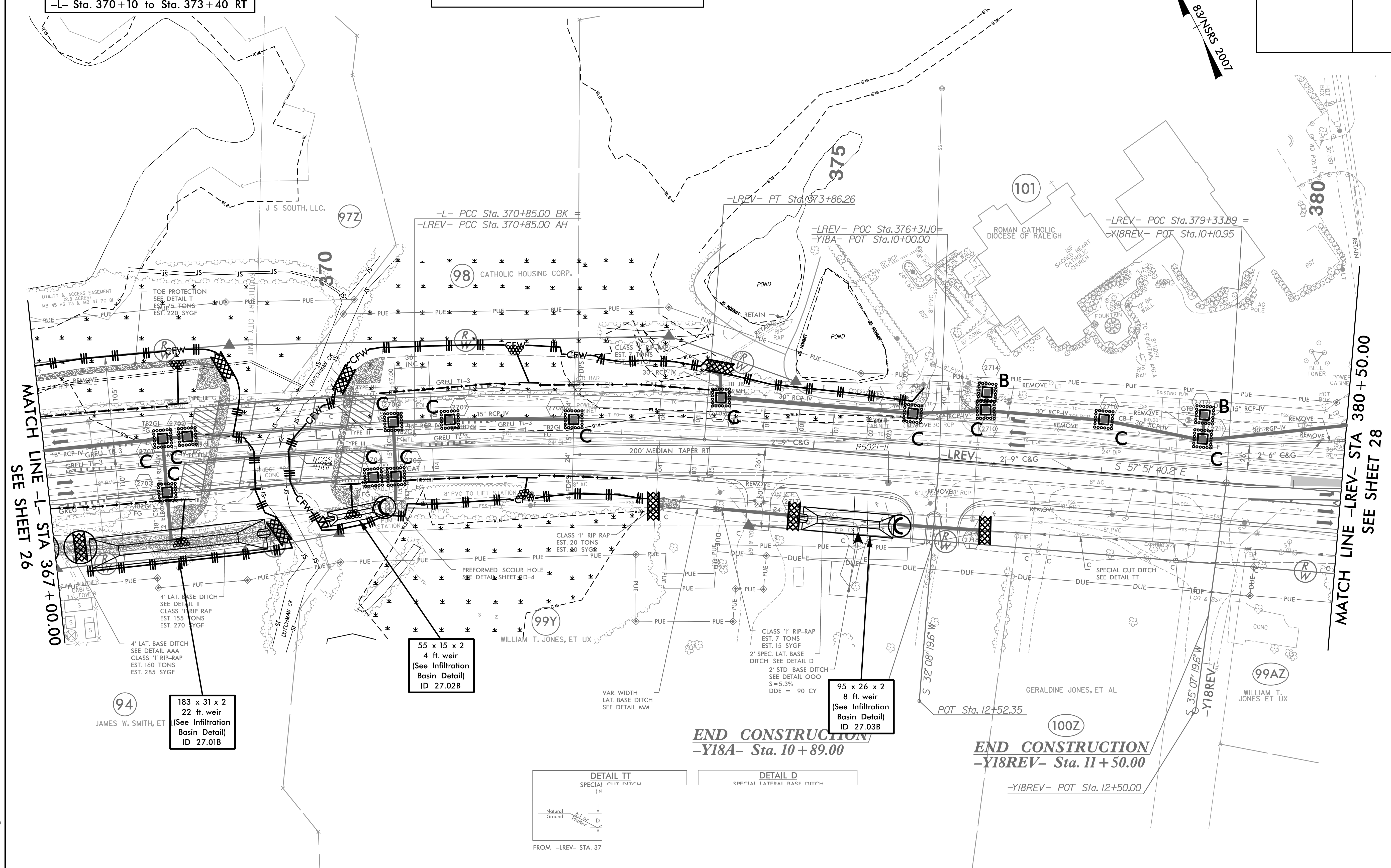
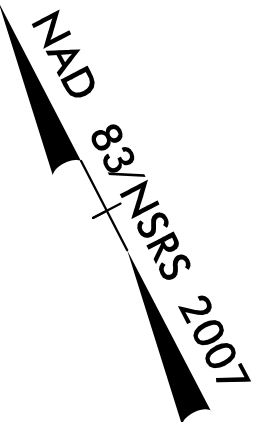
- L- Sta. 367+00 to Sta. 368+80 RT
- L- Sta. 367+00 to Sta. 368+80 LT
- L- Sta. 370+30 to Sta. 374+00 LT
- L- Sta. 370+10 to Sta. 373+40 RT

NOTE:
UTILIZE COIR FIBER MATTING ADJACENT TO WETLANDS / JURISDICTIONAL
AREAS, AND AS DIRECTED

NOTE:
UTILIZE SPECIAL STILLING BASIN(S) AND /OR INFILTRATION
BASINS AS STILLING BASINS WHERE APPLICABLE.

HNTB HNTB NORTH CAROLINA, P.C.
343 E. Six Forks Road, Suite 200
Raleigh, North Carolina 27609
NC License No: C-1554

PROJECT REFERENCE NO.	SHEET NO.
R-5021	EC-65/CONST.27
RW SHEET NO.	
ROADWAY DESIGN ENGINEER	HYDRAULICS ENGINEER



MATCH LINE -L- STA 367+00.00
SEE SHEET 26

MATCH LINE -LREV- STA 380+50.00
SEE SHEET 28

94 JAMES W. SMITH, ET AL

183 x 31 x 2
22 ft. weir
(See Infiltration
Basin Detail)
ID 27.01B

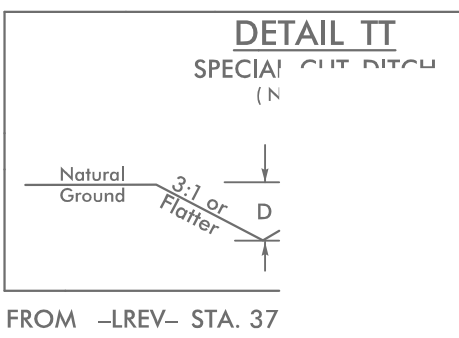
55 x 15 x 2
4 ft. weir
(See Infiltration
Basin Detail)
ID 27.02B

95 x 26 x 2
8 ft. weir
(See Infiltration
Basin Detail)
ID 27.03B

END CONSTRUCTION
-Y18A- Sta. 10+89.00

END CONSTRUCTION
-Y18REV- Sta. 11+50.00

-Y18REV- POT Sta. 12+50.00



FROM -LREV- STA. 37

4/21/2021.EC.PSH27.dgn