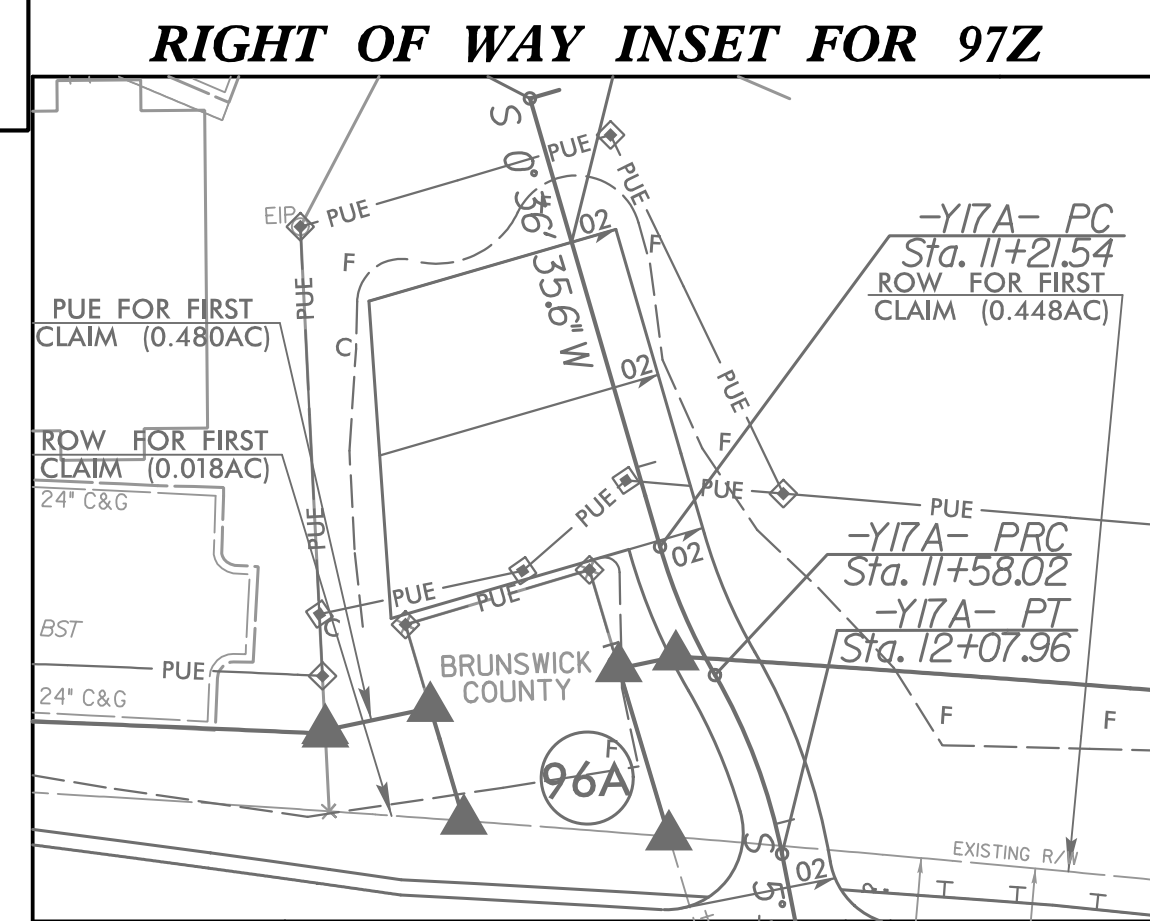
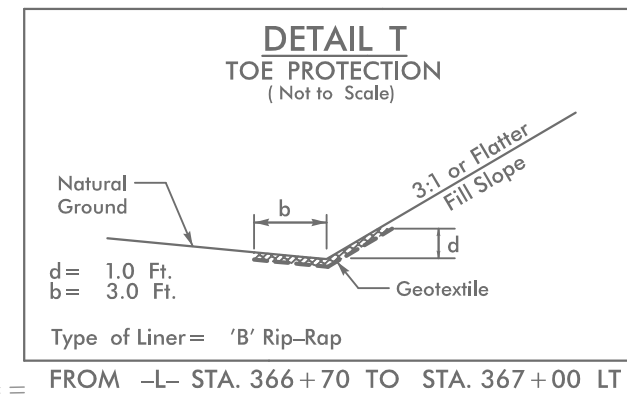
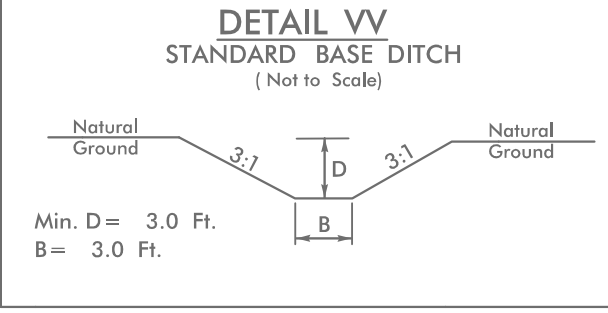
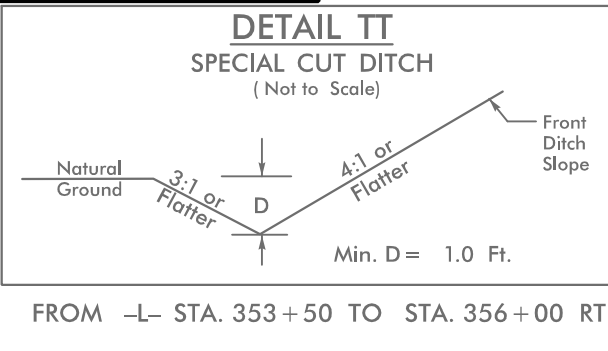
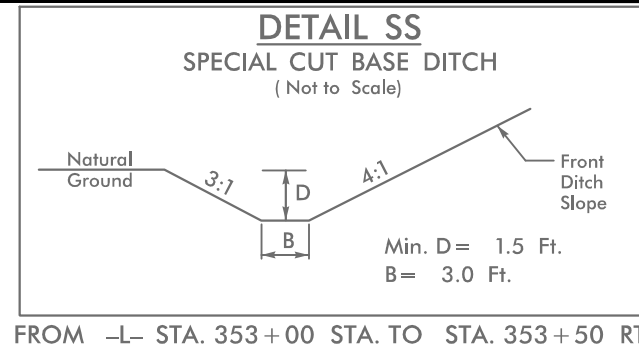


INSTALL FABRIC INSERT INLET PROTECTION DEVICE IN LIEU OF ROCK INLET SEDIMENT TRAP TYPE 'C' AS DIRECTED.

NOTE:
UTILIZE COIR FIBER MATTING ADJACENT TO WETLANDS / JURISDICTIONAL AREAS, AND AS DIRECTED

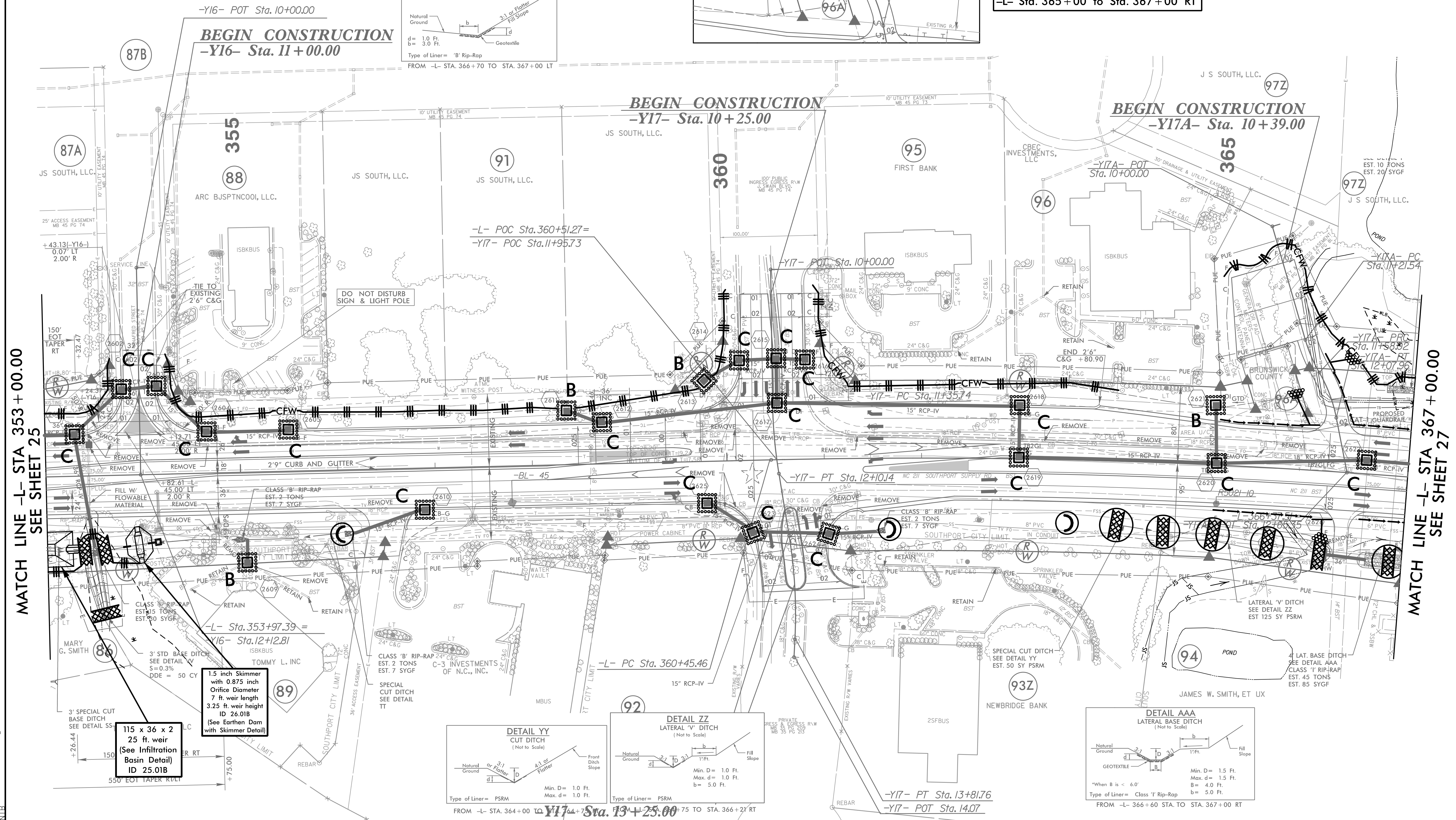


HNTB HNTB NORTH CAROLINA, P.C.
343 E. Six Forks Road, Suite 200
Raleigh, North Carolina 27609
NC License No: C-1554

PROJECT REFERENCE NO.	SHEET NO.
R-5021	EC-64/CONST.26
RW SHEET NO.	
ROADWAY DESIGN ENGINEER	HYDRAULICS ENGINEER

Place Matting for Erosion Control or Coir Fiber Mat, as directed, on Slope as Work Allows.
-L- Sta. 364+00 to Sta. 365+80 LT
-L- Sta. 365+00 to Sta. 367+00 RT

EXISTING TRAFFIC SIGNAL



MATCH LINE -L- STA 353 + 00.00
SEE SHEET 25

MATCH LINE -L- STA 367 + 00.00
SEE SHEET 27

115 x 36 x 2
25 ft. weir
(See Infiltration Basin Detail)
ID 25,01B

1.5 inch Skimmer with 0.875 inch Orifice Diameter 7 ft. weir length 3.25 ft. weir height ID 26,01B (See Earthen Dam with Skimmer Detail)