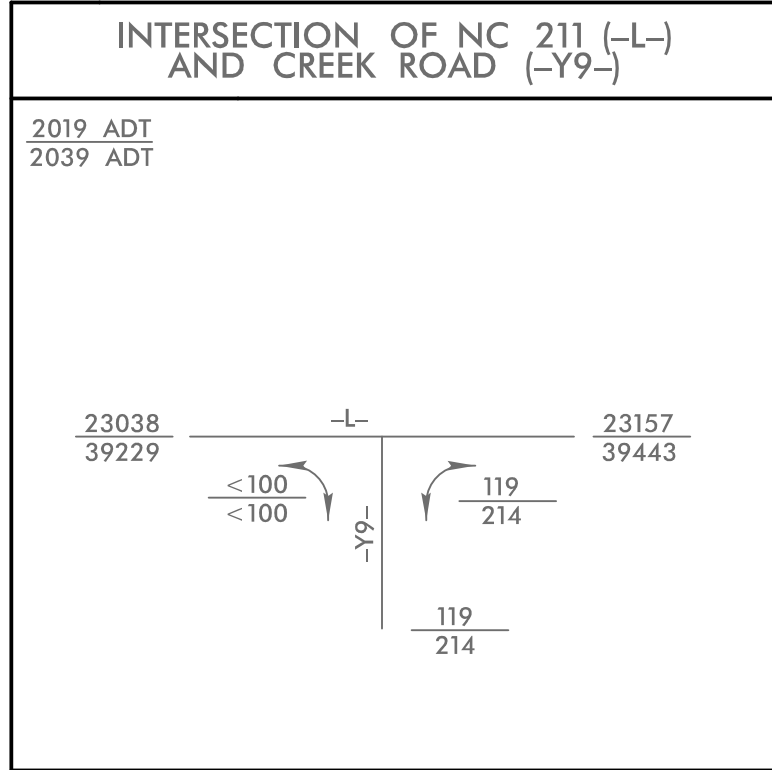


5/14/99



Place Matting for Erosion Control or Coir Fiber Mat, as directed, on Slope as Work Allows.

- L- Sta. 297+00 to Sta. 305+50 LT
- L- Sta. 297+00 to Sta. 300+00 RT
- L- Sta. 301+00 to Sta. 305+50 RT
- L- Sta. 307+50 to Sta. 308+60 RT
- L- Sta. 306+50 to Sta. 311+00 LT
- L- Sta. 310+50 to Sta. 311+00 RT

INSTALL FABRIC INSERT INLET PROTECTION DEVICE IN LIEU OF ROCK INLET SEDIMENT TRAP TYPE 'C' AS DIRECTED.

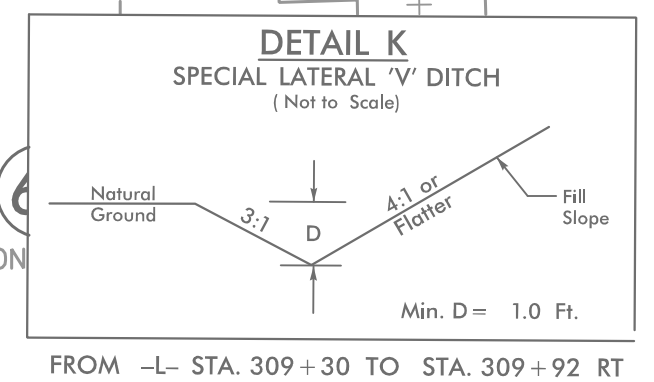
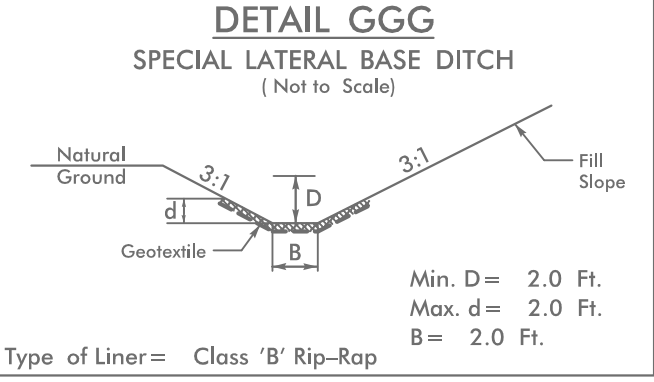
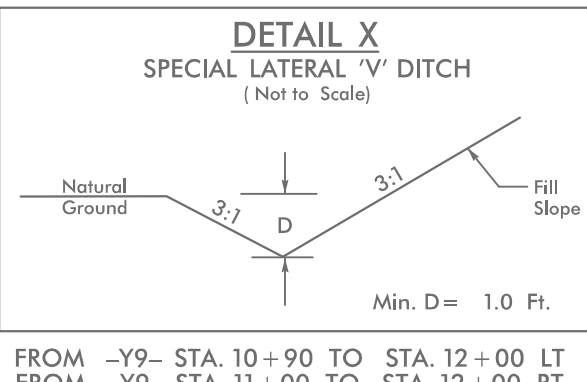
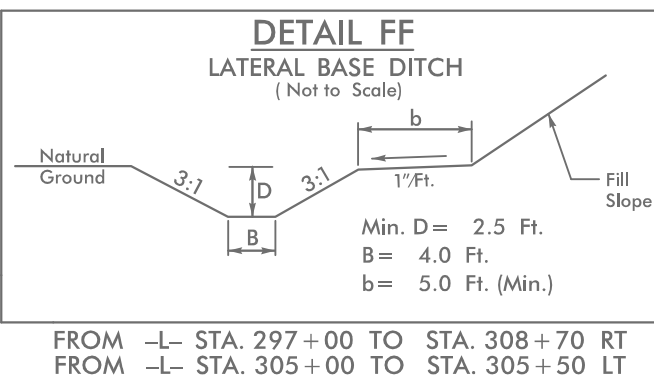
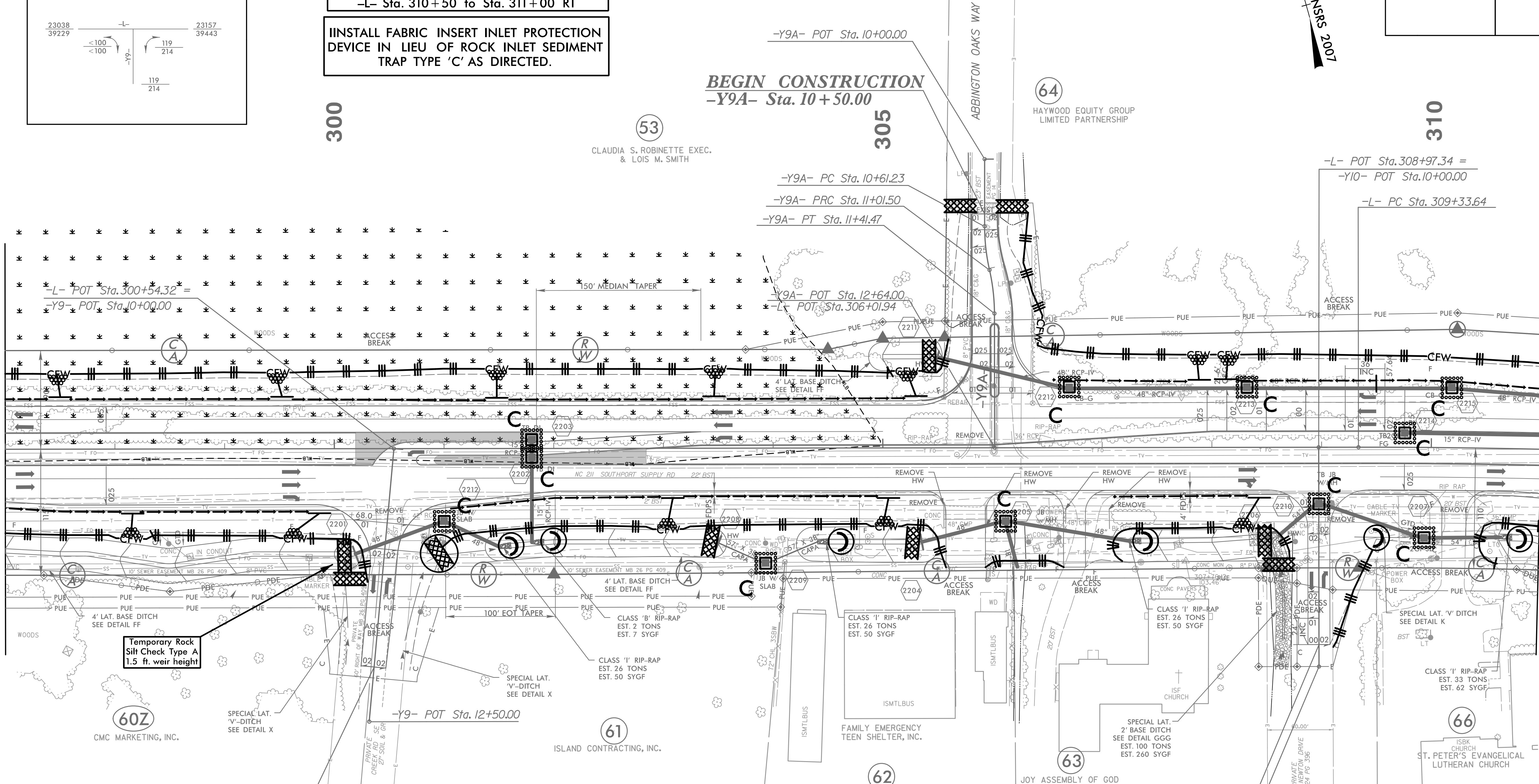
NOTE:  
UTILIZE COIR FIBER MATTING ADJACENT TO WETLANDS / JURISDICTIONAL AREAS, AND AS DIRECTED

**HNTB** HNTB NORTH CAROLINA, P.C.  
343 E. Six Forks Road, Suite 200  
Raleigh, North Carolina 27609  
NC License No: C-1554

PROJECT REFERENCE NO.	SHEET NO.
R-5021	EC-59/CONST.22
RW SHEET NO.	
ROADWAY DESIGN ENGINEER	HYDRAULICS ENGINEER

MATCH LINE -L- STA 297+00.00  
SEE SHEET 21

MATCH LINE -L- STA 311+00.00  
SEE SHEET 23



10/13/2021 EC\_PSH22.dgn