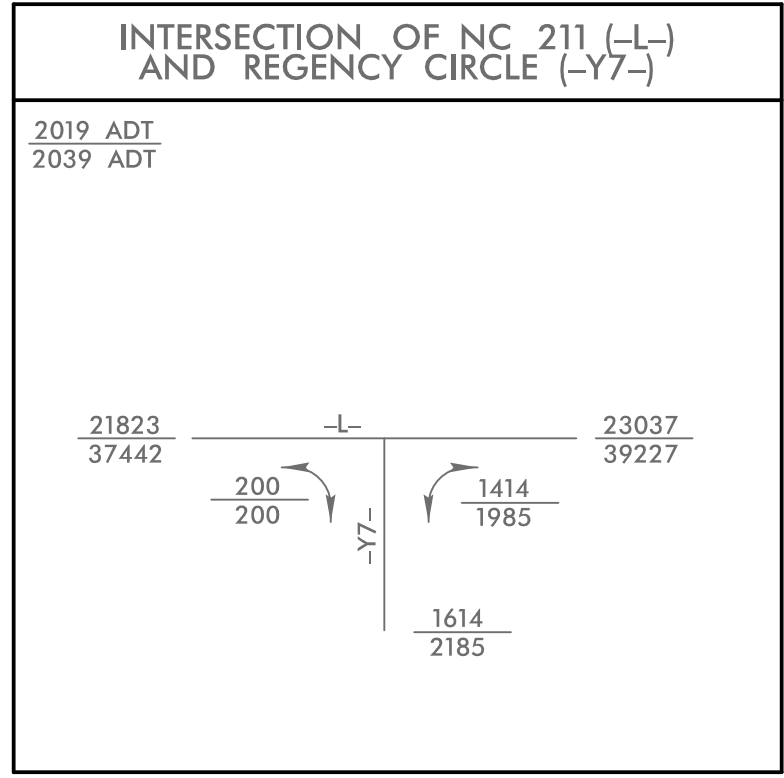


5/14/99



Place Matting for Erosion Control
or Coir Fiber Mat, as directed,
on Slope as Work Allows.
-L- Sta. 255+00 to Sta. 269+00 RT
-L- Sta. 255+00 to Sta. 269+00 LT

NOTE:
UTILIZE COIR FIBER MATTING ADJACENT TO WETLANDS /JURISDICTIONAL
AREAS, AND AS DIRECTED

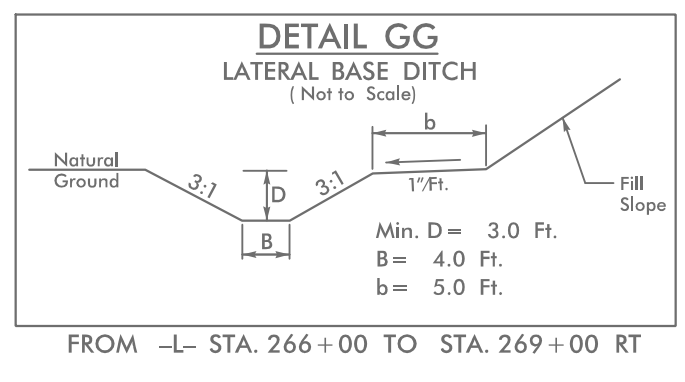
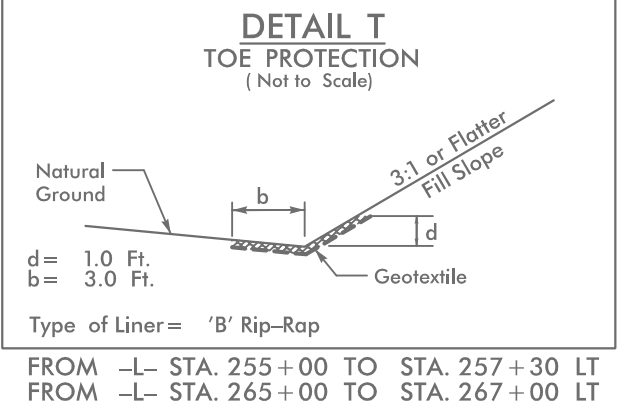
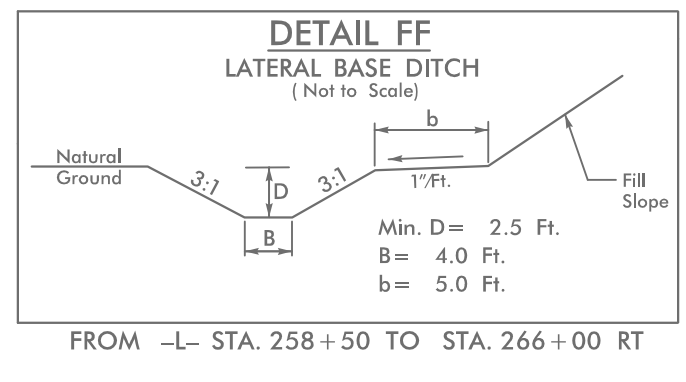
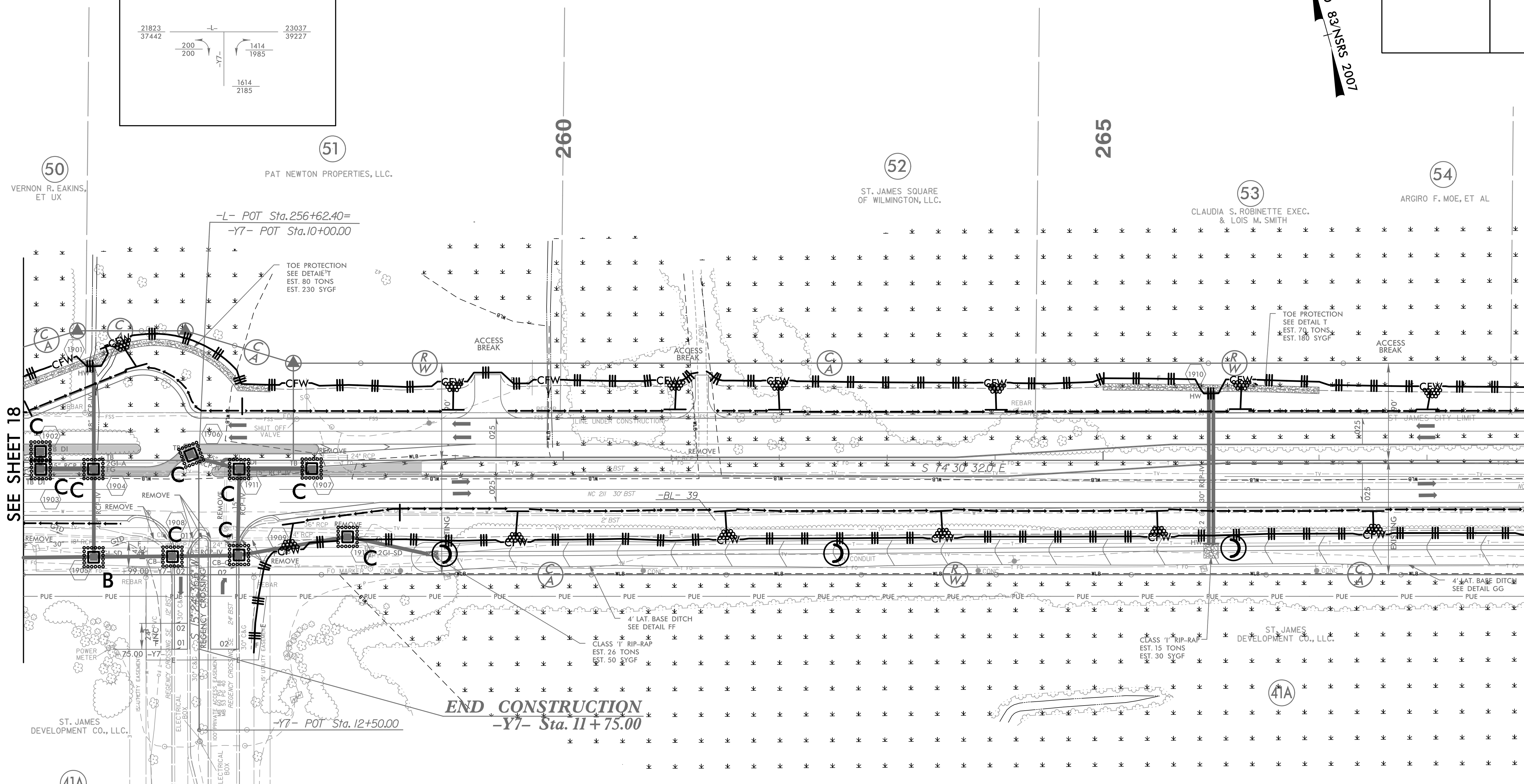
HNTB HNTB NORTH CAROLINA, P.C.
343 E. Six Forks Road, Suite 200
Raleigh, North Carolina 27609
NC License No: C-1554

PROJECT REFERENCE NO.	SHEET NO.
R-5021	EC-56/CONST.19
RW SHEET NO.	
ROADWAY DESIGN ENGINEER	HYDRAULICS ENGINEER

NAD
83 NSRS
2007

MATCH LINE -L- STA 255+00.00
SEE SHEET 18

MATCH LINE -L- STA 269+00.00
SEE SHEET 20



11/28/2018
R-5021-EC_PSH19.dgn
HNTB