

5/14/99

PROJECT REFERENCE NO.	SHEET NO.
R-5021	EC-45/CONST.B
RW SHEET NO.	
ROADWAY DESIGN ENGINEER	HYDRAULICS ENGINEER

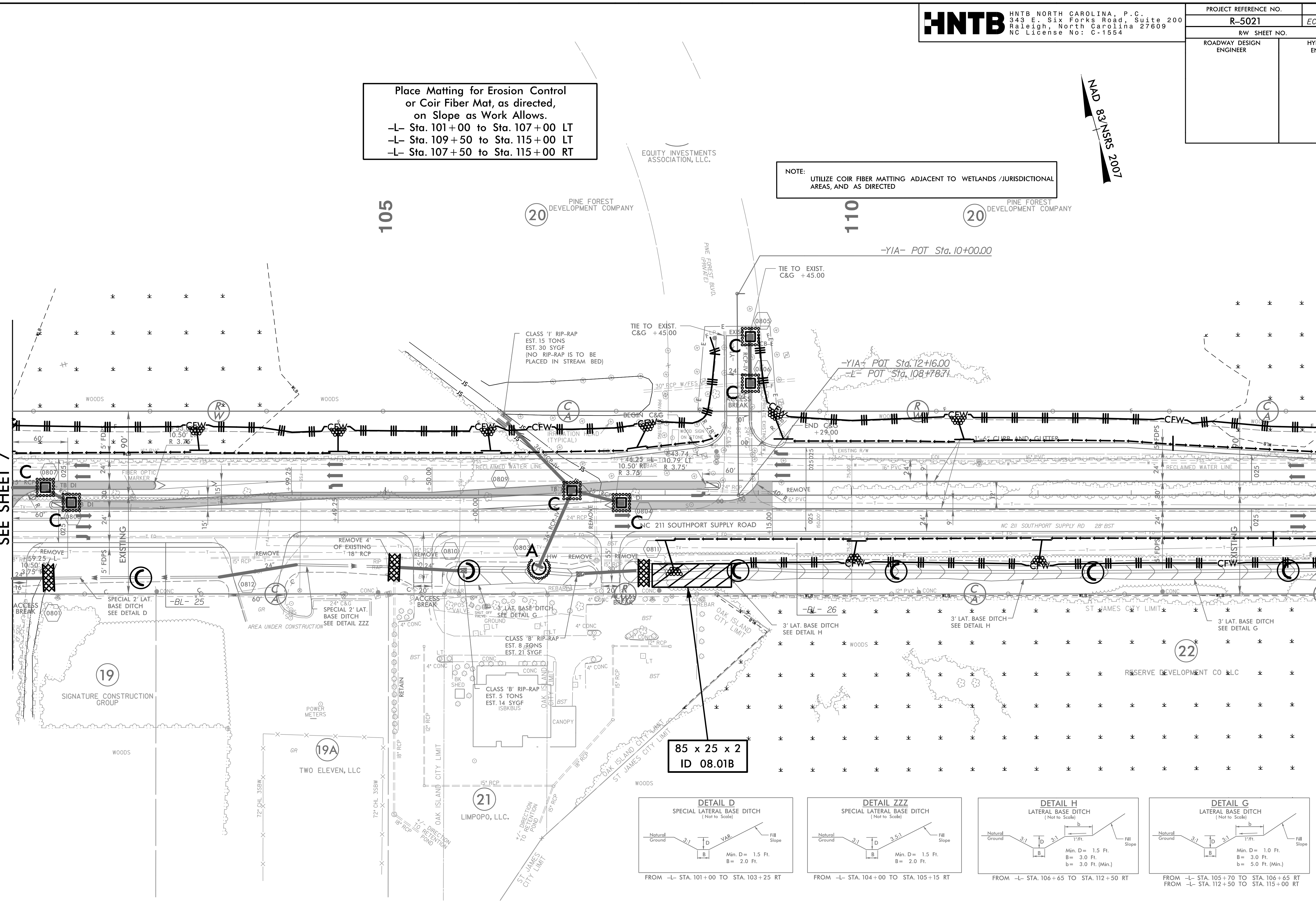
Place Matting for Erosion Control
 or Coir Fiber Mat, as directed,
 on Slope as Work Allows.
 -L- Sta. 101+00 to Sta. 107+00 LT
 -L- Sta. 109+50 to Sta. 115+00 LT
 -L- Sta. 107+50 to Sta. 115+00 RT

NOTE:
 UTILIZE COIR FIBER MATTING ADJACENT TO WETLANDS / JURISDICTIONAL
 AREAS, AND AS DIRECTED

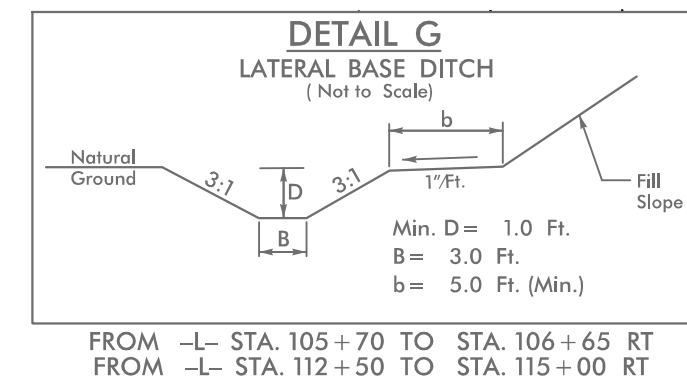
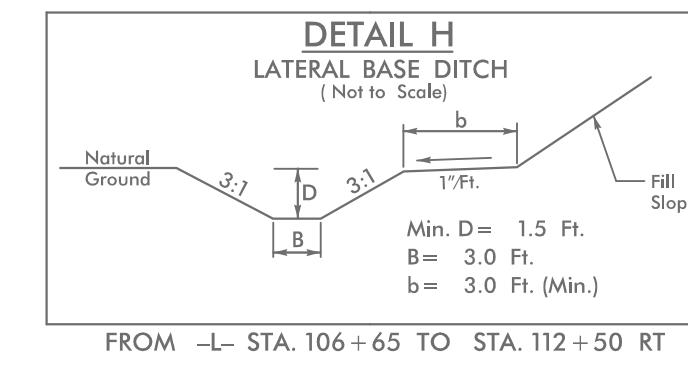
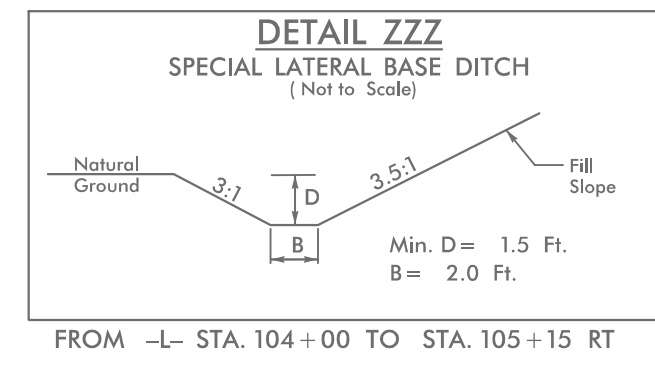
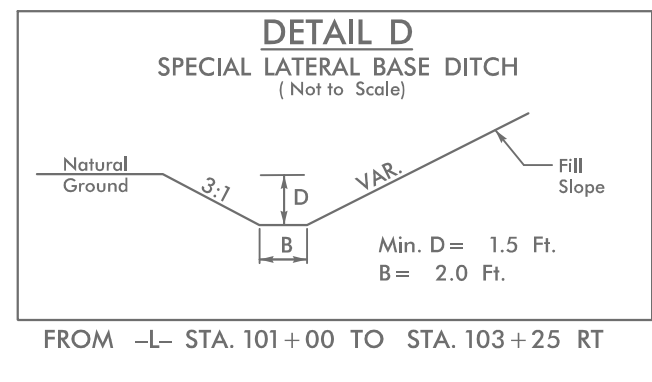
NAD 83/NSRS 2007

MATCH LINE -L- STA 101+00.00
 SEE SHEET 7

MATCH LINE -L- STA 115+00.00
 SEE SHEET 9



85 x 25 x 2
 ID 08.01B



11/2/2008 L.E.C._PSH8.dgn