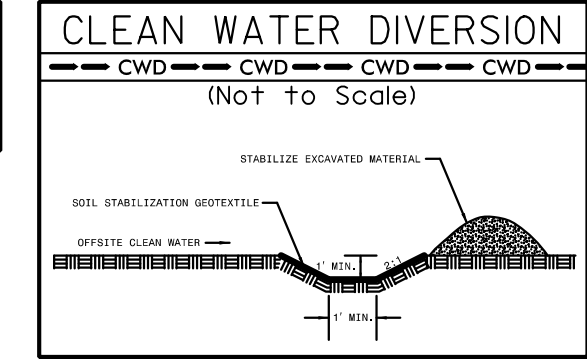


5/14/99

PROJECT REFERENCE NO.	SHEET NO.
	EC-44/CONST.7
RW SHEET NO.	
ROADWAY DESIGN ENGINEER	HYDRAULICS ENGINEER

NOTE: UTILIZE COIR FIBER MATTING ADJACENT TO WETLANDS /JURISDICTIONAL AREAS, AND AS DIRECTED



20  
PINE FOREST DEVELOPMENT COMPANY

QUAINTANCE, INC

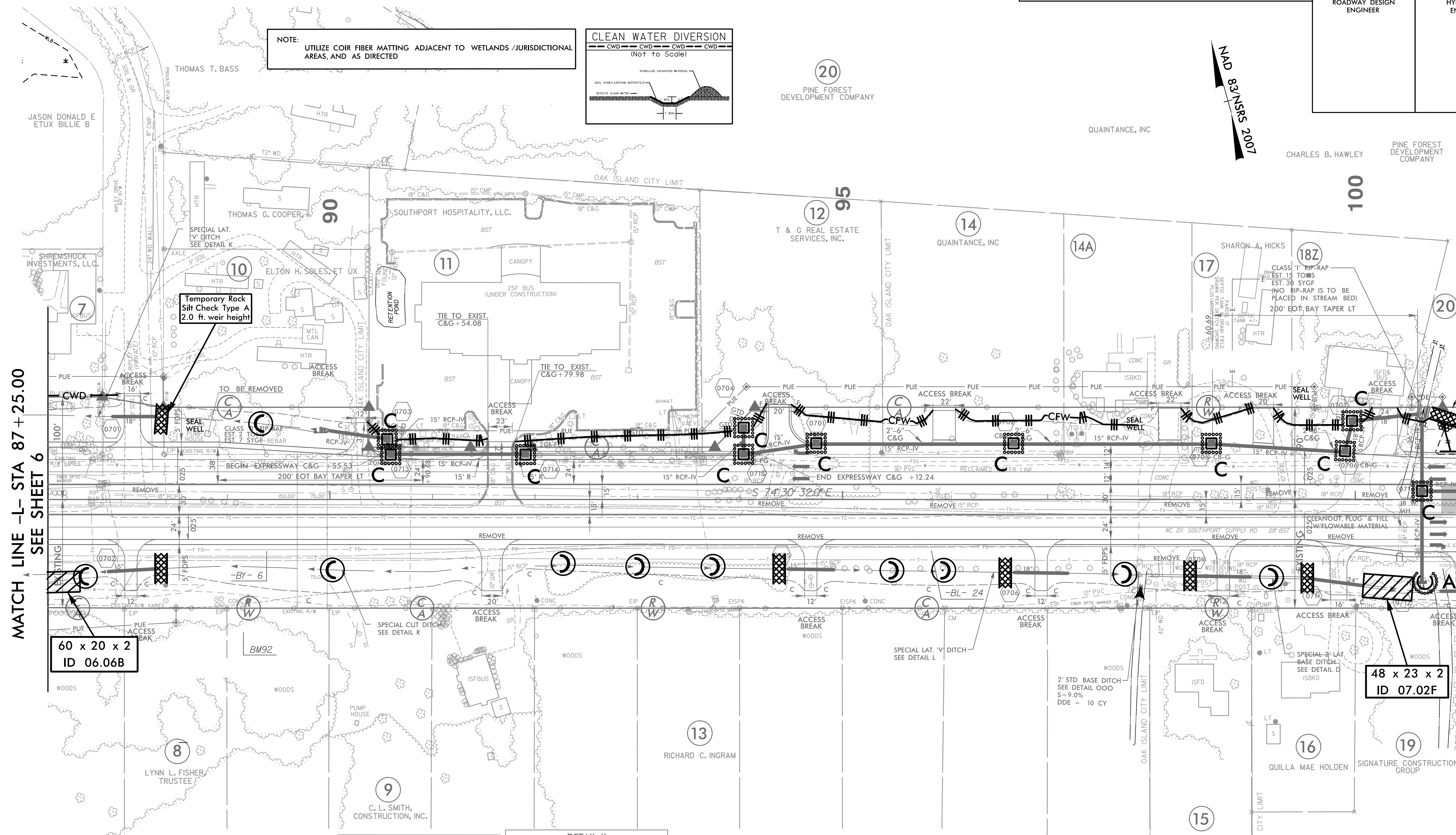
MAP 83/NSRS 2007

CHARLES B. HAWLEY

PINE FOREST DEVELOPMENT COMPANY

MATCH LINE -L- STA 87+25.00  
SEE SHEET 6

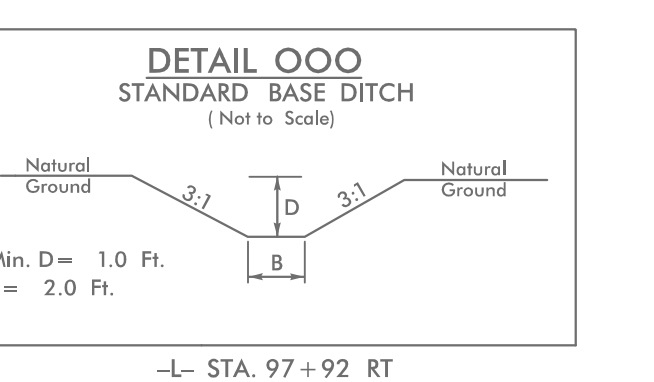
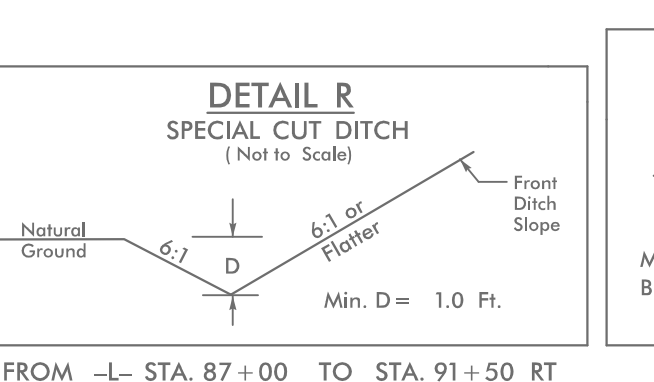
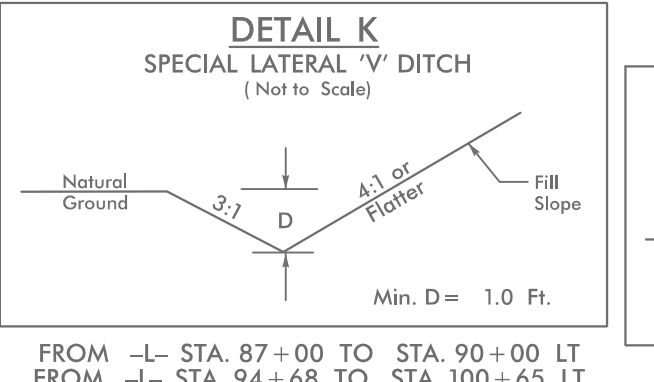
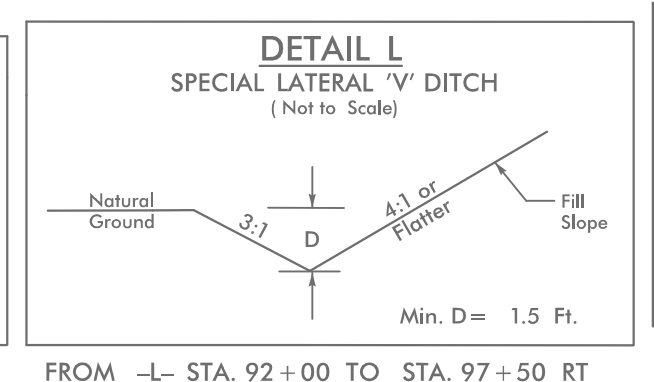
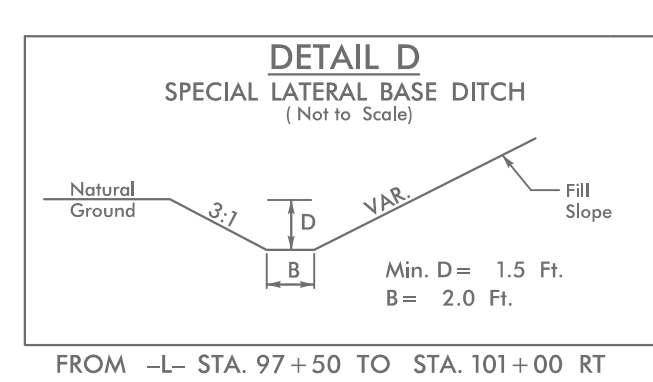
MATCH LINE -L- STA 101+00.00  
SEE SHEET 8



Temporary Rock Silt Check Type A  
2.0 ft. weir height

60 x 20 x 2  
ID 06.06B

48 x 23 x 2  
ID 07.02F



4/24/2021 EC\_PSH.T.dgn