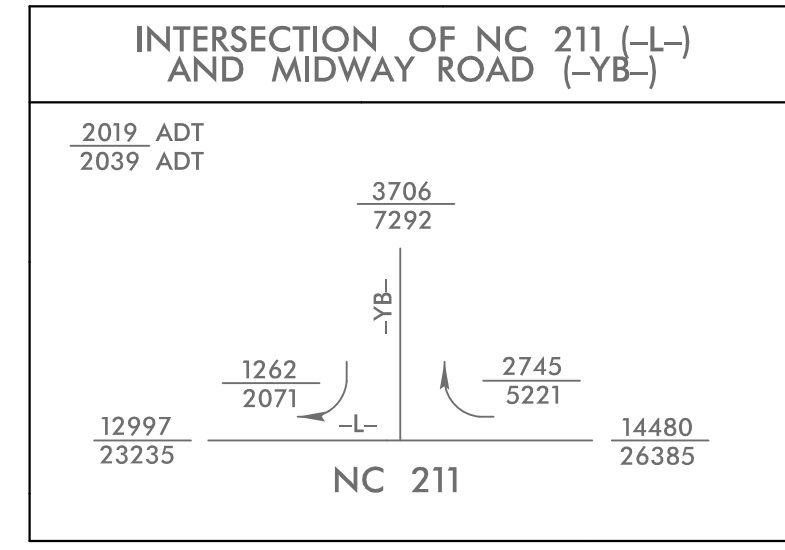
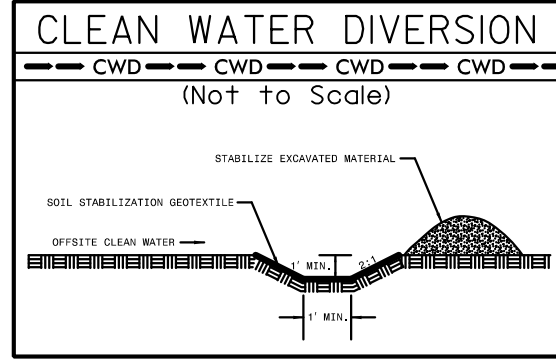


5/14/99

PROJECT REFERENCE NO.	SHEET NO.
R-5021	EC-43/CONST.6
RW SHEET NO.	
ROADWAY DESIGN ENGINEER	HYDRAULICS ENGINEER



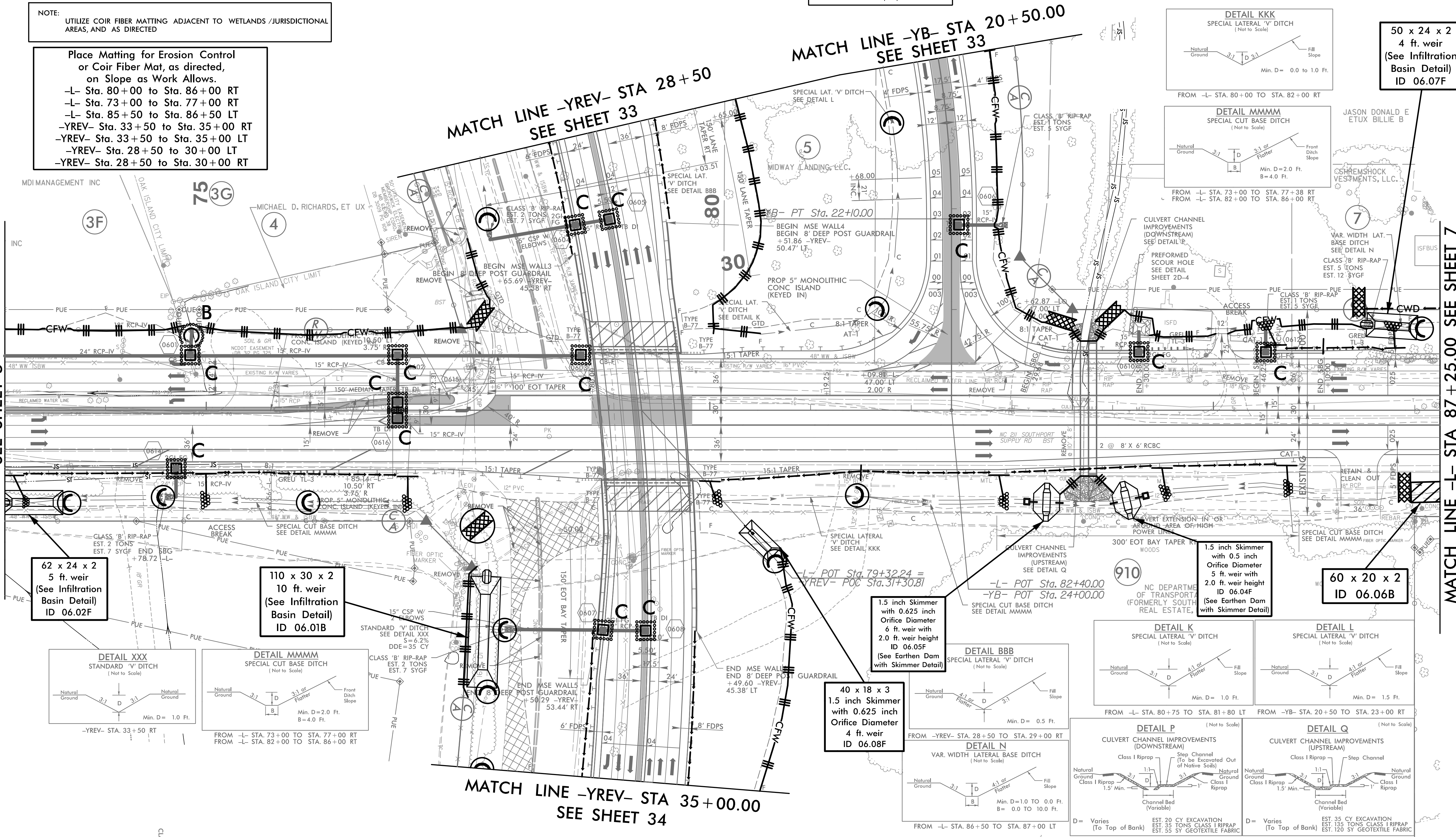
MAD
8/1/NSRS 2007



NOTE:
 UTILIZE COIR FIBER MATTING ADJACENT TO WETLANDS / JURISDICTIONAL AREAS, AND AS DIRECTED

Place Matting for Erosion Control or Coir Fiber Mat, as directed, on Slope as Work Allows.
 -L- Sta. 80+00 to Sta. 86+00 RT
 -L- Sta. 73+00 to Sta. 77+00 RT
 -L- Sta. 85+50 to Sta. 86+50 LT
 -YREV- Sta. 33+50 to Sta. 35+00 RT
 -YREV- Sta. 33+50 to Sta. 35+00 LT
 -YREV- Sta. 28+50 to 30+00 LT
 -YREV- Sta. 28+50 to Sta. 30+00 RT

MATCH LINE -L- STA 73+00.00
 SEE SHEET 5



50 x 24 x 2
 4 ft. weir
 (See Infiltration Basin Detail)
 ID 06.07F

62 x 24 x 2
 5 ft. weir
 (See Infiltration Basin Detail)
 ID 06.02F

110 x 30 x 2
 10 ft. weir
 (See Infiltration Basin Detail)
 ID 06.01B

1.5 inch Skimmer
 with 0.625 inch
 Orifice Diameter
 6 ft. weir with
 2.0 ft. weir height
 ID 06.05F
 (See Earthen Dam
 with Skimmer Detail)

40 x 18 x 3
 1.5 inch Skimmer
 with 0.625 inch
 Orifice Diameter
 4 ft. weir
 ID 06.08F

1.5 inch Skimmer
 with 0.5 inch
 Orifice Diameter
 5 ft. weir with
 2.0 ft. weir height
 ID 06.04F
 (See Earthen Dam
 with Skimmer Detail)

60 x 20 x 2
 ID 06.06B

MATCH LINE -L- STA 87+25.00 SEE SHEET 7

MATCH LINE -YREV- STA 35+00.00
 SEE SHEET 34

