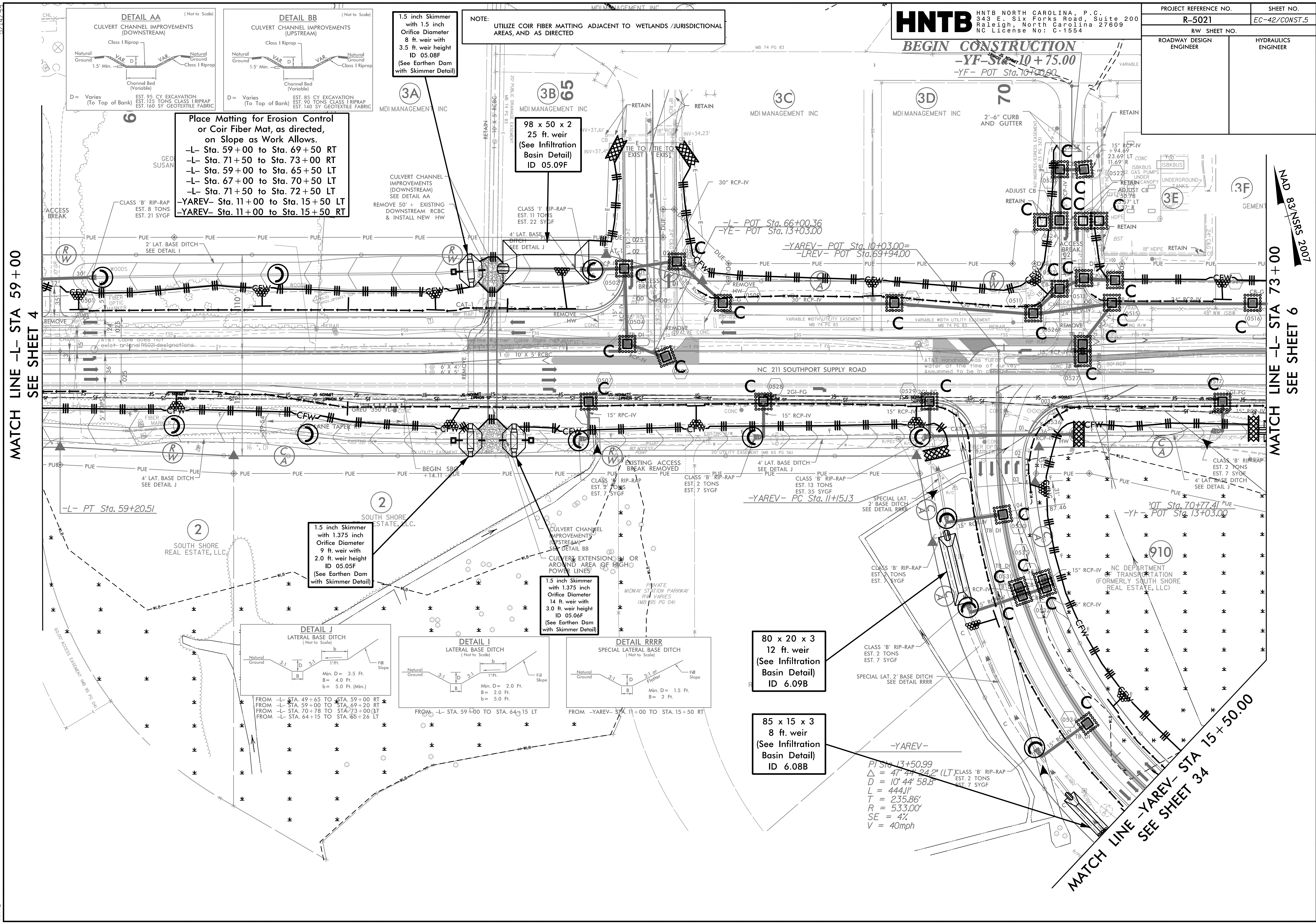


PROJECT REFERENCE NO.	SHEET NO.
R-5021	EC-42/CONST.5
RW SHEET NO.	
ROADWAY DESIGN ENGINEER	HYDRAULICS ENGINEER

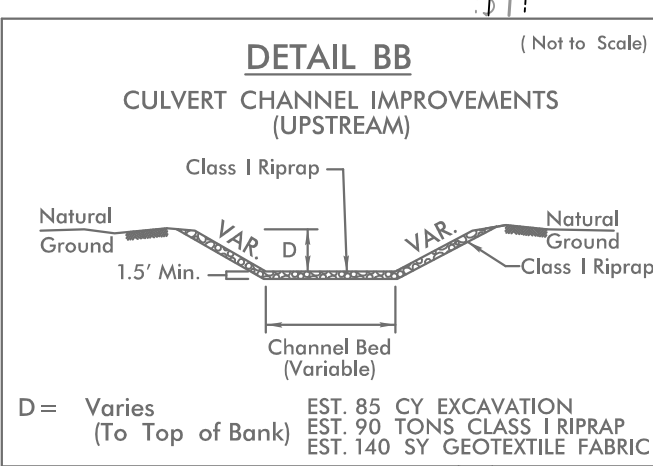
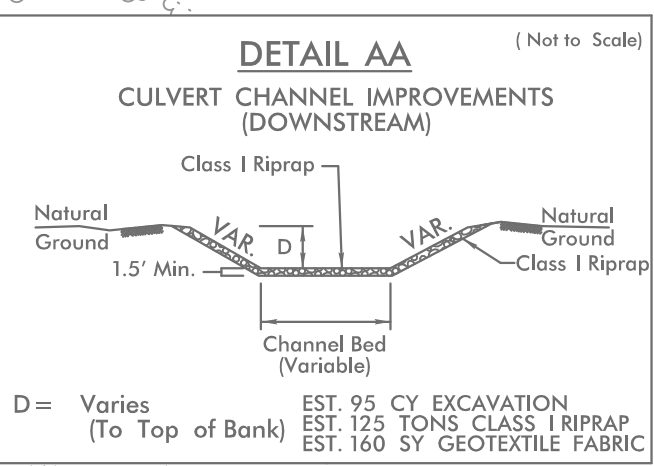
HNTB HNTB NORTH CAROLINA, P.C.
 343 E. Six Forks Road, Suite 200
 Raleigh, North Carolina 27609
 NC License No: C-1554

BEGIN CONSTRUCTION
 -YF- Sta. 10+75.00
 -YF- POT Sta. 10+70.90



MATCH LINE -L- STA 59+00
SEE SHEET 4

MATCH LINE -L- STA 73+00
SEE SHEET 6



1.5 inch Skimmer with 1.5 inch Orifice Diameter
 8 ft. weir with 3.5 ft. weir height
 ID 05.08F
 (See Earthen Dam with Skimmer Detail)

NOTE:
 UTILIZE COIR FIBER MATTING ADJACENT TO WETLANDS / JURISDICTIONAL AREAS, AND AS DIRECTED

Place Matting for Erosion Control or Coir Fiber Mat, as directed, on Slope as Work Allows.
 -L- Sta. 59+00 to Sta. 69+50 RT
 -L- Sta. 71+50 to Sta. 73+00 RT
 -L- Sta. 59+00 to Sta. 65+50 LT
 -L- Sta. 67+00 to Sta. 70+50 LT
 -L- Sta. 71+50 to Sta. 72+50 LT
 -YAREV- Sta. 11+00 to Sta. 15+50 LT
 -YAREV- Sta. 11+00 to Sta. 15+50 RT

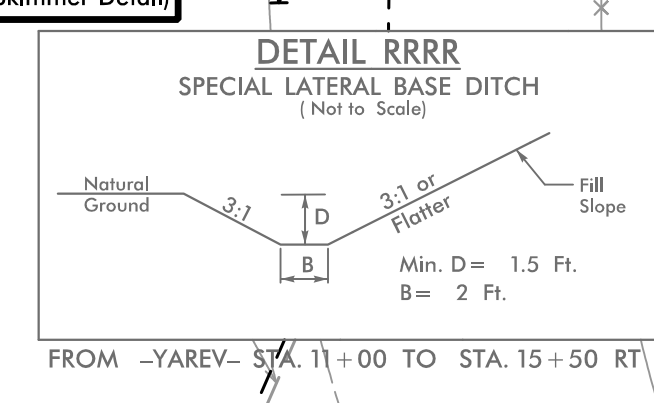
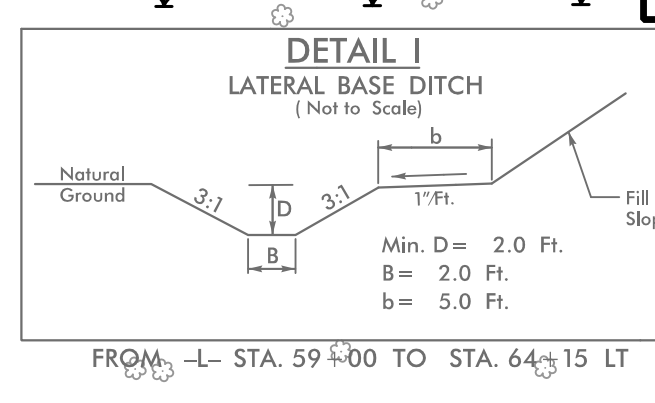
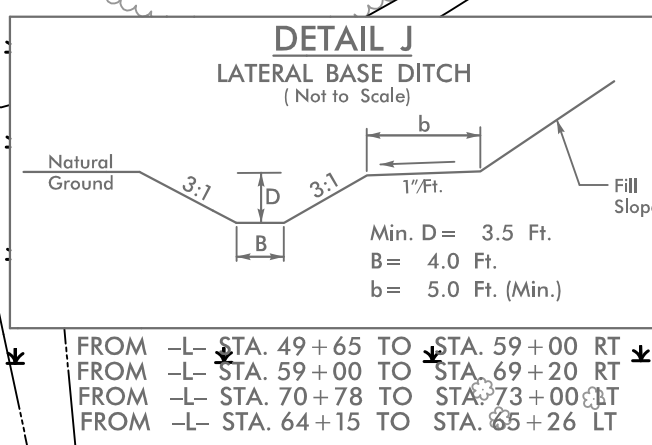
98 x 50 x 2
 25 ft. weir
 (See Infiltration Basin Detail)
 ID 05.09F

1.5 inch Skimmer with 1.375 inch Orifice Diameter
 9 ft. weir with 2.0 ft. weir height
 ID 05.05F
 (See Earthen Dam with Skimmer Detail)

1.5 inch Skimmer with 1.375 inch Orifice Diameter
 14 ft. weir with 3.0 ft. weir height
 ID 05.06F
 (See Earthen Dam with Skimmer Detail)

80 x 20 x 3
 12 ft. weir
 (See Infiltration Basin Detail)
 ID 6.09B

85 x 15 x 3
 8 ft. weir
 (See Infiltration Basin Detail)
 ID 6.08B



-YAREV-
 P1 Sta. 13+50.99
 Δ = 47° 44' 24.2" (LT)
 D = 10' 44' 58.8"
 L = 444.1'
 T = 235.86'
 R = 533.00'
 SE = 4%
 V = 40mph

MATCH LINE -YAREV- STA 15+50.00
SEE SHEET 34