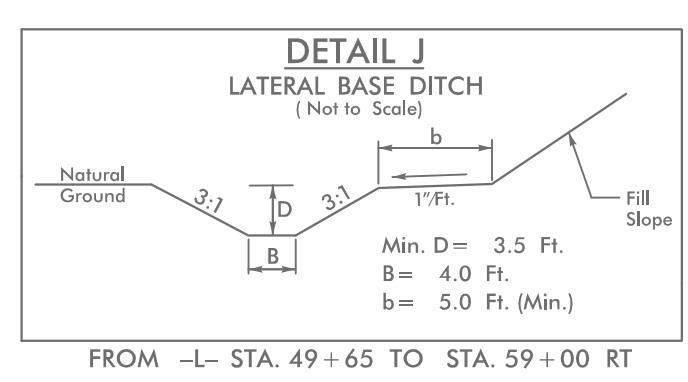
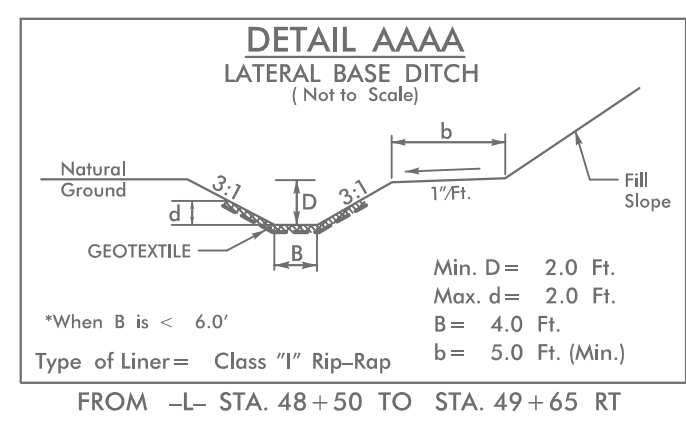
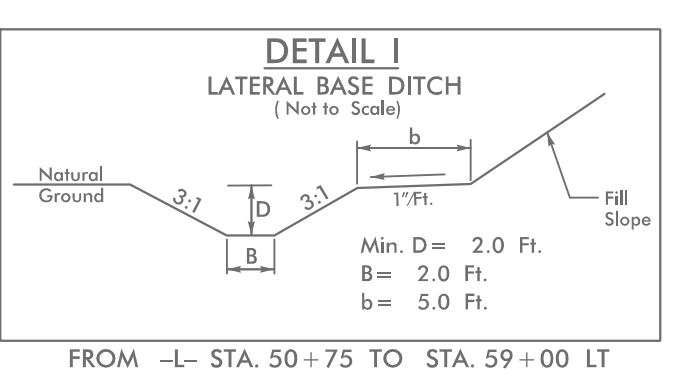
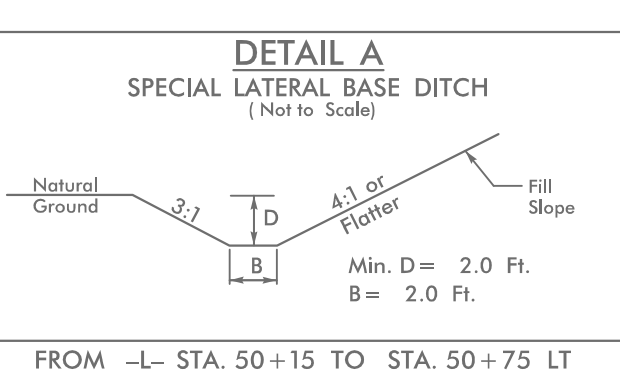
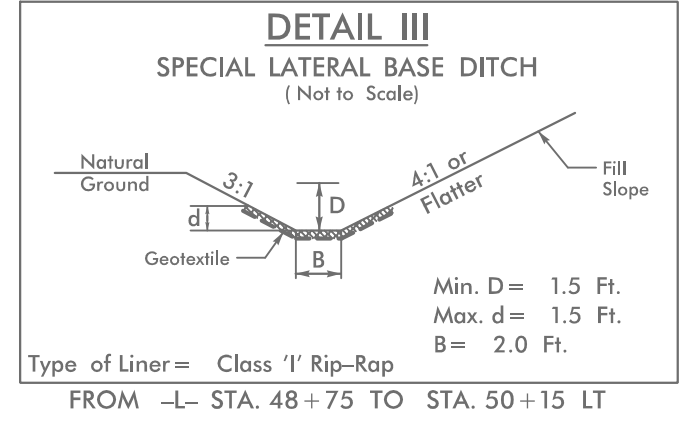
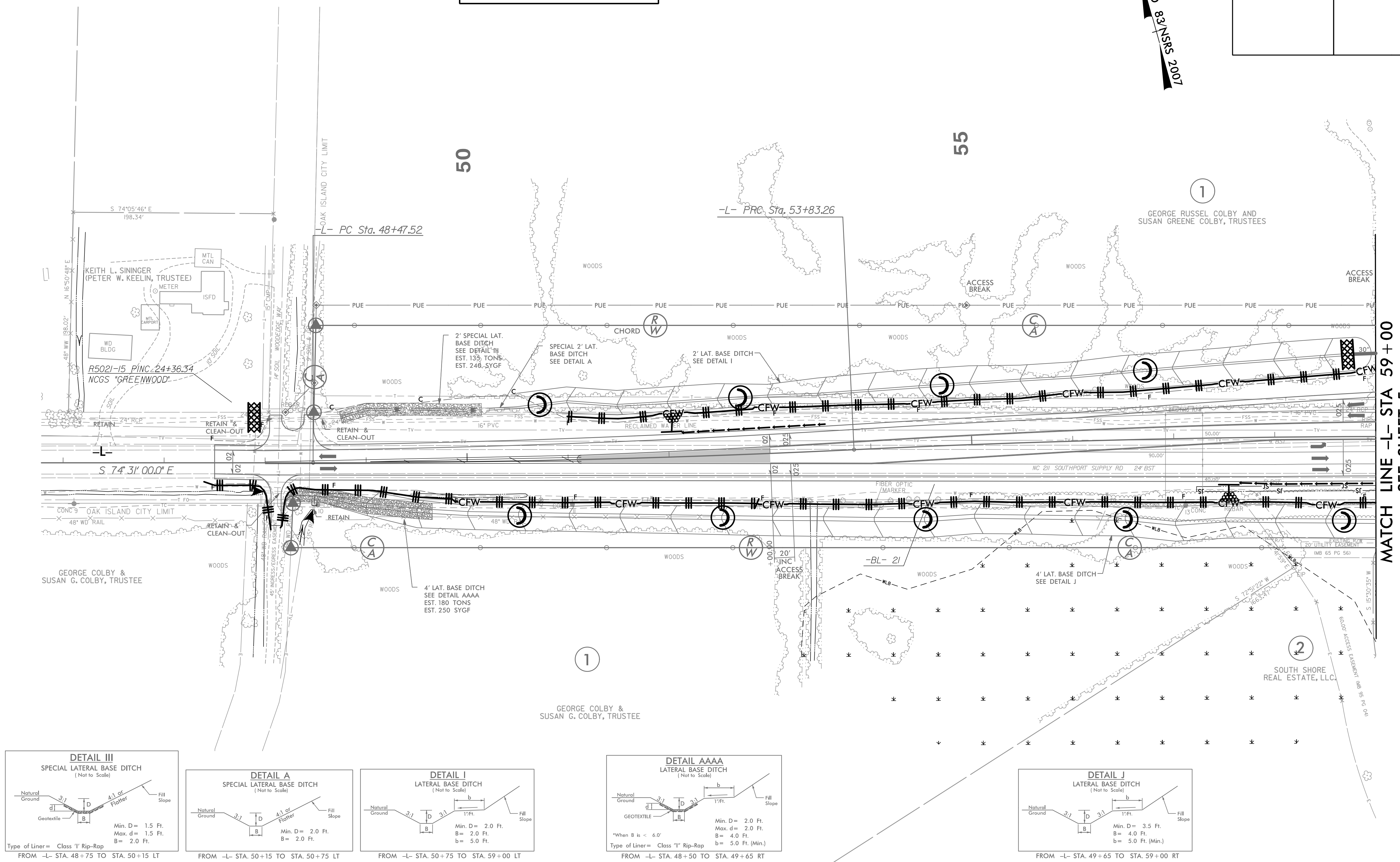
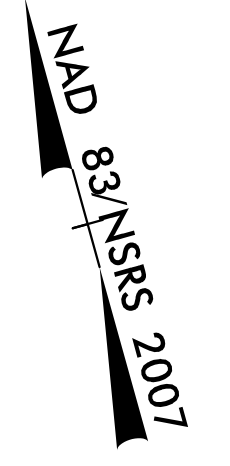


5/14/99

PROJECT REFERENCE NO.	SHEET NO.
R-5021	EC-41/CONST.4
RW SHEET NO.	
ROADWAY DESIGN ENGINEER	HYDRAULICS ENGINEER

NOTE:
 UTILIZE COIR FIBER MATTING ADJACENT TO WETLANDS / JURISDICTIONAL AREAS, AND AS DIRECTED

Place Matting for Erosion Control
 or Coir Fiber Mat, as directed,
 on Slope as Work Allows.
 -L- Sta. 51+50 to Sta. 59+00 LT
 -L- Sta. 57+50 to Sta. 59+00 RT



- NOTE:
1. ALL DRIVEWAY RADII ARE 20' UNLESS NOTED ON PLANS.
 2. PAVED TURNOUTS FOR SHOULDER SECTION SHOULD EXTEND 50' UNLESS NOTED ON PLANS.

FOR -L- PROFILE, SEE SHEET 41
 FOR DRAINAGE DETAILS, SEE SHEETS 2D-1 THRU 2D-3

MATCH LINE -L- STA 59+00
 SEE SHEET 5

11/2/2008 11:50:11 EC_PSH4.dgn