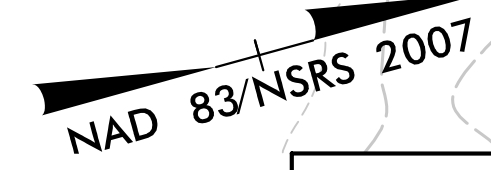


5/14/99

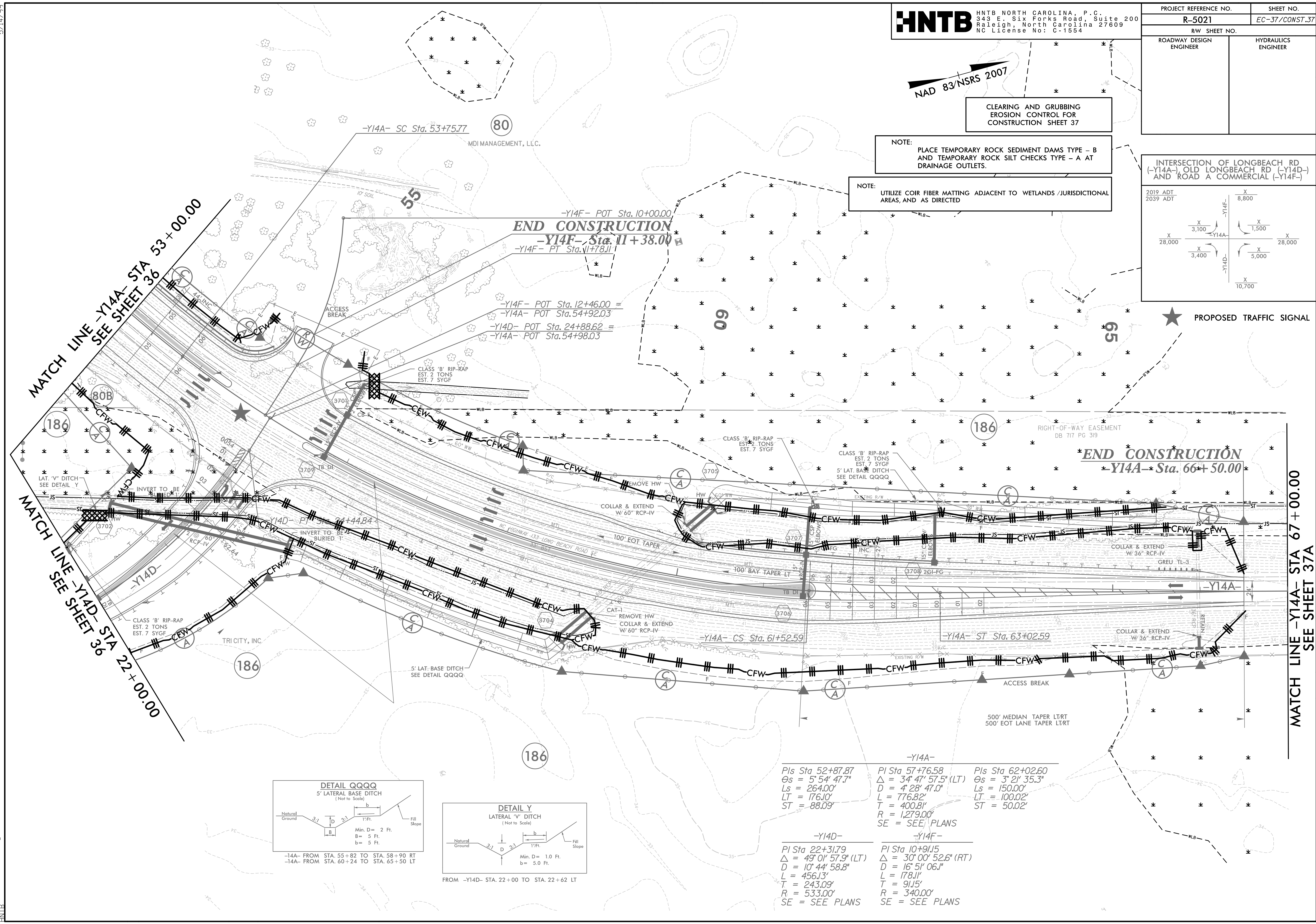
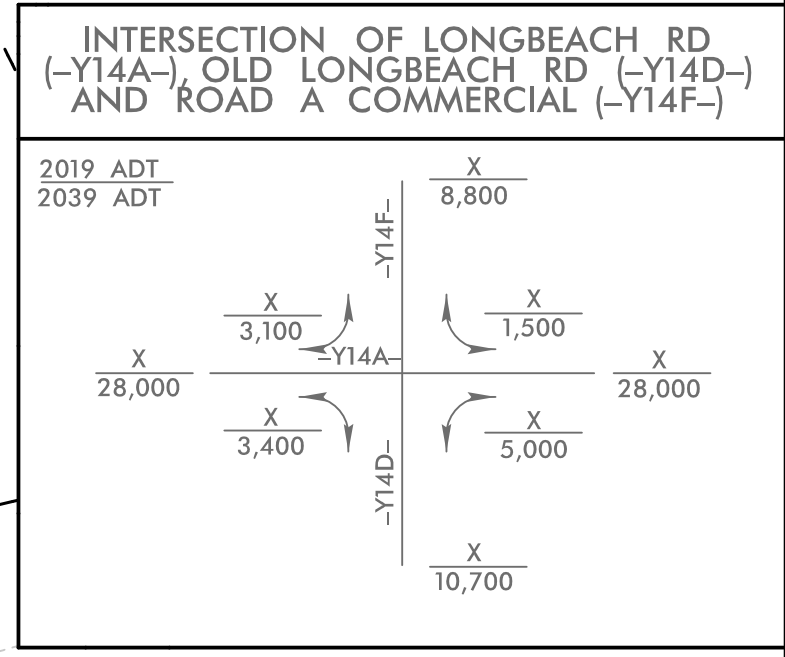
PROJECT REFERENCE NO.	SHEET NO.
R-5021	EC-37/CONST.37
RW SHEET NO.	
ROADWAY DESIGN ENGINEER	HYDRAULICS ENGINEER



CLEARING AND GRUBBING
 EROSION CONTROL FOR
 CONSTRUCTION SHEET 37

NOTE: PLACE TEMPORARY ROCK SEDIMENT DAMS TYPE - B AND TEMPORARY ROCK SILT CHECKS TYPE - A AT DRAINAGE OUTLETS.

NOTE: UTILIZE COIR FIBER MATTING ADJACENT TO WETLANDS / JURISDICTIONAL AREAS, AND AS DIRECTED



MATCH LINE -Y14A- STA 53+00.00
 SEE SHEET 36

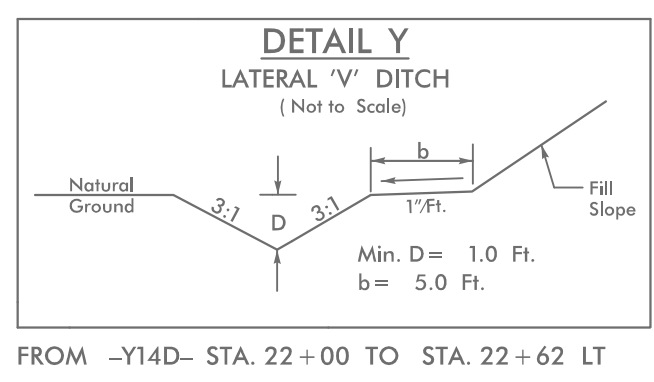
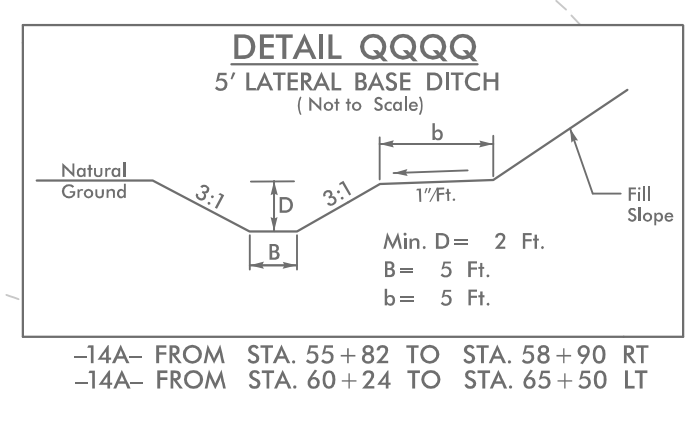
MATCH LINE -Y14D- STA 22+00.00
 SEE SHEET 36

MATCH LINE -Y14A- STA 67+00.00
 SEE SHEET 37A

END CONSTRUCTION
 -Y14F- Sta. 11+38.00

END CONSTRUCTION
 -Y14A- Sta. 66+50.00

PROPOSED TRAFFIC SIGNAL



-Y14A-
 Pls Sta 52+87.87
 $\theta_s = 5^\circ 54' 47.7''$
 $L_s = 264.00'$
 $LT = 176.10'$
 $ST = 88.09'$

Pls Sta 57+76.58
 $\Delta = 34^\circ 47' 57.5''$ (LT)
 $D = 4^\circ 28' 47.0''$
 $L = 776.82'$
 $T = 400.81'$
 $R = 1,279.00'$
 SE = SEE PLANS

Pls Sta 62+02.60
 $\theta_s = 3^\circ 21' 35.3''$
 $L_s = 150.00'$
 $LT = 100.02'$
 $ST = 50.02'$

-Y14D-
 Pls Sta 22+31.79
 $\Delta = 49^\circ 01' 57.9''$ (LT)
 $D = 10^\circ 44' 58.8''$
 $L = 456.13'$
 $T = 243.09'$
 $R = 533.00'$
 SE = SEE PLANS

-Y14F-
 Pls Sta 10+91.15
 $\Delta = 30^\circ 00' 52.6''$ (RT)
 $D = 16^\circ 51' 06.1''$
 $L = 178.11'$
 $T = 91.15'$
 $R = 340.00'$
 SE = SEE PLANS

4/22/2021
 4/22/2021
 EC_PSH37.dgn