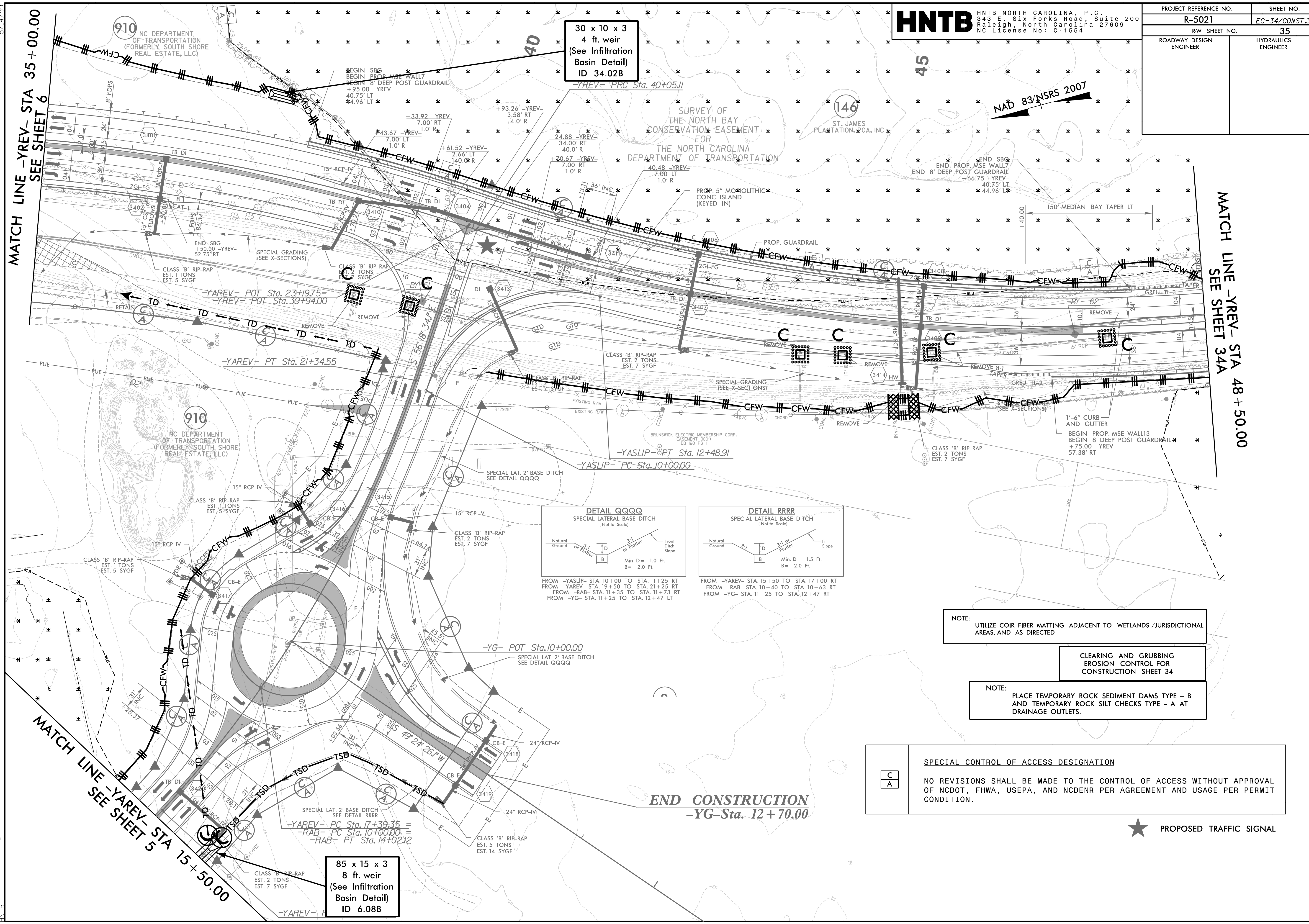


5/14/2009

9/13/2009
34021-EC_PSH34.dgn
HNTB



MATCH LINE -YREV- STA 35+00.00
SEE SHEET 6

MATCH LINE -YREV- STA 48+50.00
SEE SHEET 34A

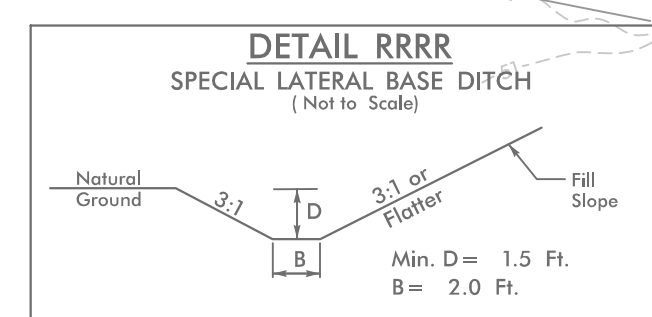
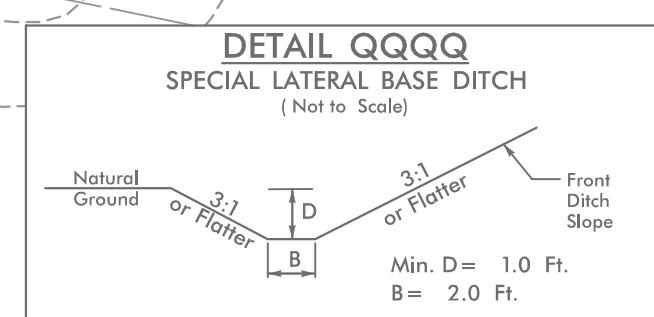
HNTB

HNTB NORTH CAROLINA, P.C.
343 E. Six Forks Road, Suite 200
Raleigh, North Carolina 27609
NC License No: C-1554

PROJECT REFERENCE NO.	SHEET NO.
R-5021	EC-34/CONST.34
R/W SHEET NO.	35
ROADWAY DESIGN ENGINEER	HYDRAULICS ENGINEER

30 x 10 x 3
4 ft. weir
(See Infiltration
Basin Detail)
ID 34.02B

85 x 15 x 3
8 ft. weir
(See Infiltration
Basin Detail)
ID 6.08B



NOTE:
UTILIZE COIR FIBER MATTING ADJACENT TO WETLANDS /JURISDICTIONAL
AREAS, AND AS DIRECTED

CLEARING AND GRUBBING
EROSION CONTROL FOR
CONSTRUCTION SHEET 34

NOTE:
PLACE TEMPORARY ROCK SEDIMENT DAMS TYPE - B
AND TEMPORARY ROCK SILT CHECKS TYPE - A AT
DRAINAGE OUTLETS.

SPECIAL CONTROL OF ACCESS DESIGNATION

C	NO REVISIONS SHALL BE MADE TO THE CONTROL OF ACCESS WITHOUT APPROVAL OF NCDOT, FHWA, USEPA, AND NCDENR PER AGREEMENT AND USAGE PER PERMIT CONDITION.
A	

★ PROPOSED TRAFFIC SIGNAL

END CONSTRUCTION
-YG- Sta. 12+70.00

MATCH LINE -YAREV- STA 15+50.00
SEE SHEET 5