

5/14/99

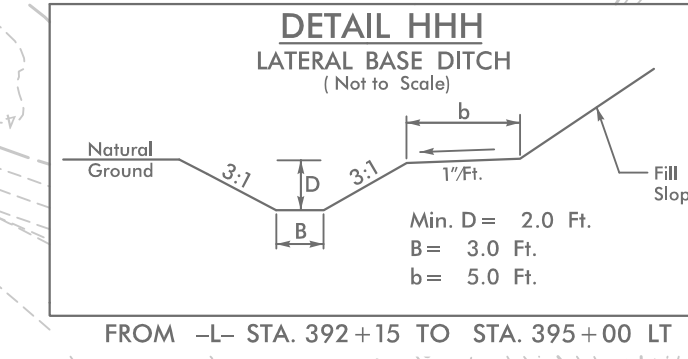
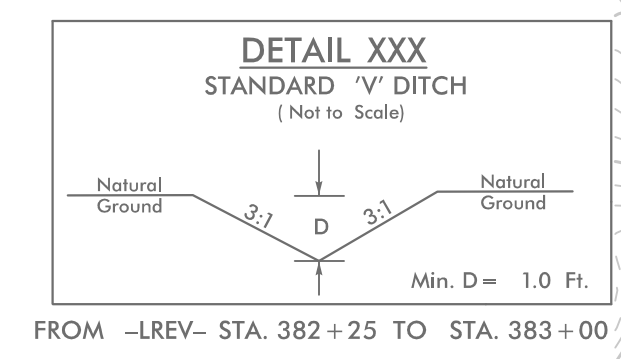
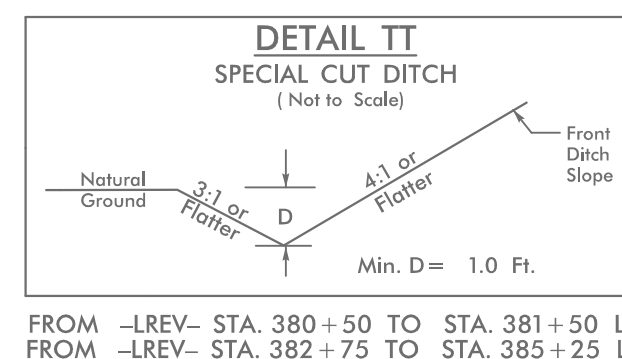
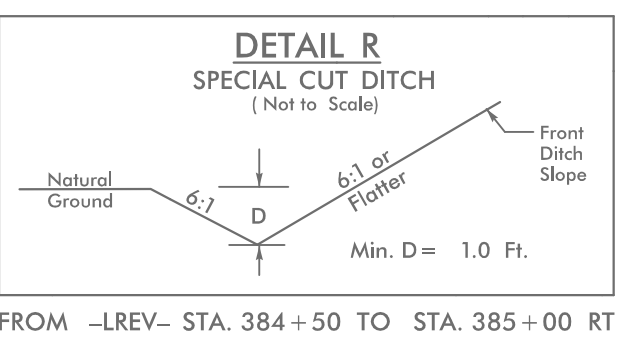
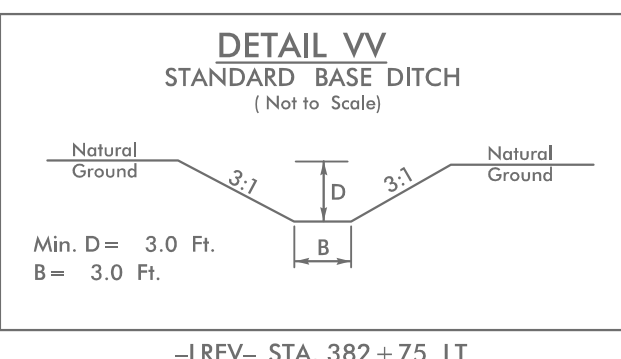
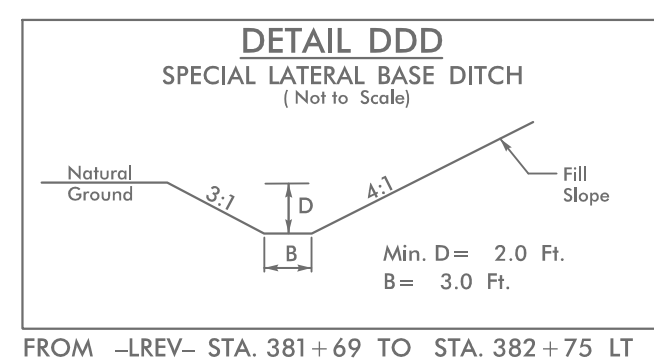
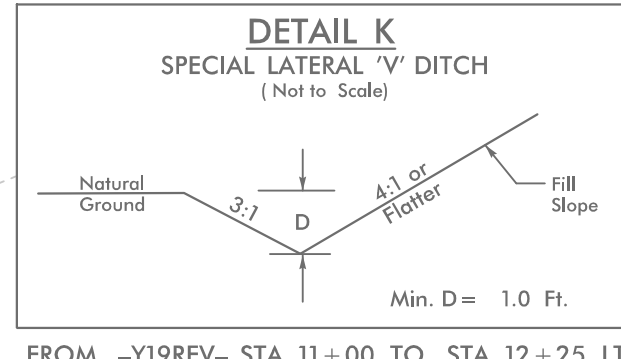
NOTE: UTILIZE COIR FIBER MATTING ADJACENT TO WETLANDS /JURISDICTIONAL AREAS, AND AS DIRECTED

NOTE: PLACE TEMPORARY ROCK SEDIMENT DAMS TYPE - B AND TEMPORARY ROCK SILT CHECKS TYPE - A AT DRAINAGE OUTLETS.

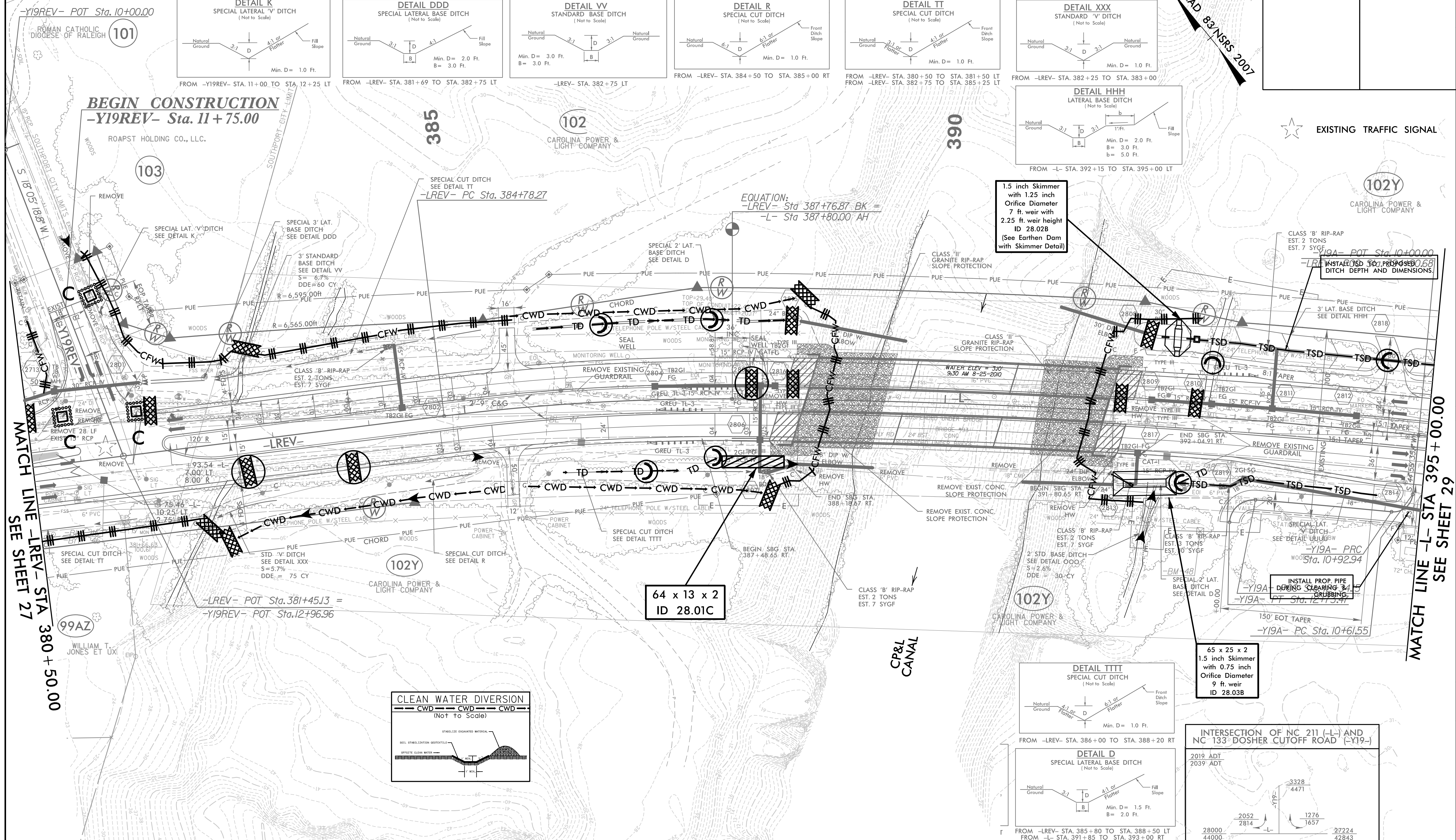
CLEARING AND GRUBBING EROSION CONTROL FOR CONSTRUCTION SHEET 28

**HNTB** HNTB NORTH CAROLINA, P.C. 343 E. Six Forks Road, Suite 200 Raleigh, North Carolina 27609 NC License No: C-1554

PROJECT REFERENCE NO.	SHEET NO.
R-5021	EC-28/CONST.28
RW SHEET NO.	
ROADWAY DESIGN ENGINEER	HYDRAULICS ENGINEER



NAD 83 NSRS 2007



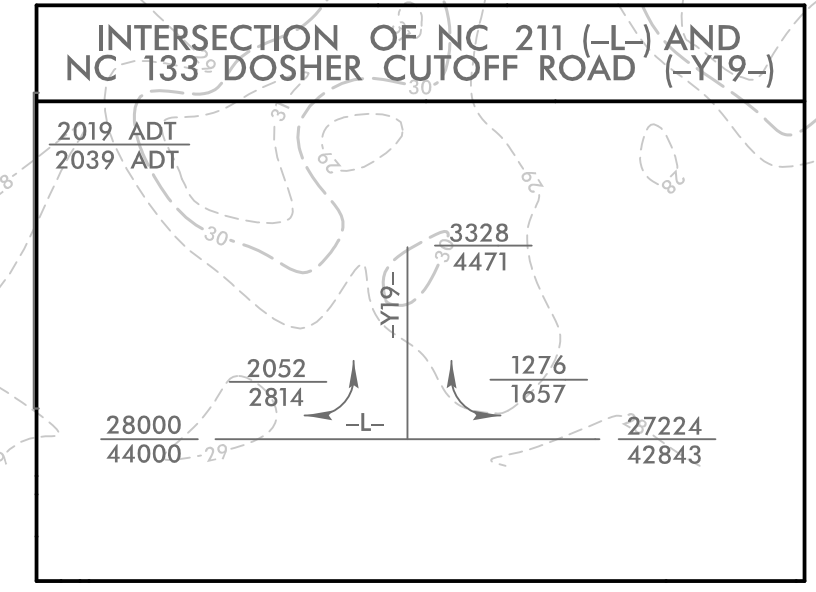
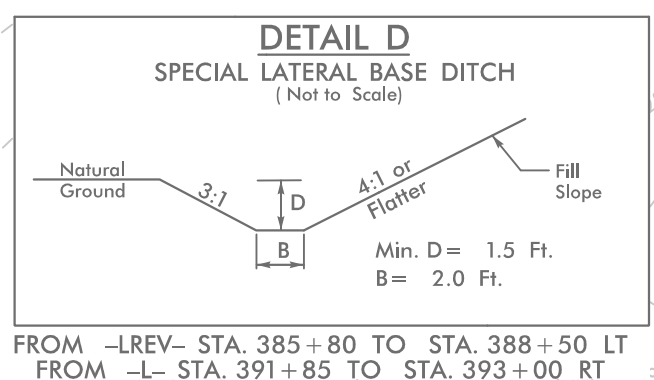
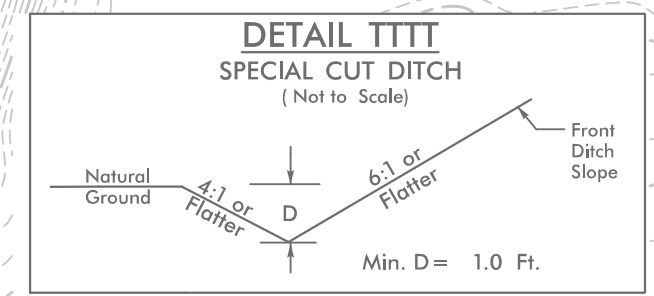
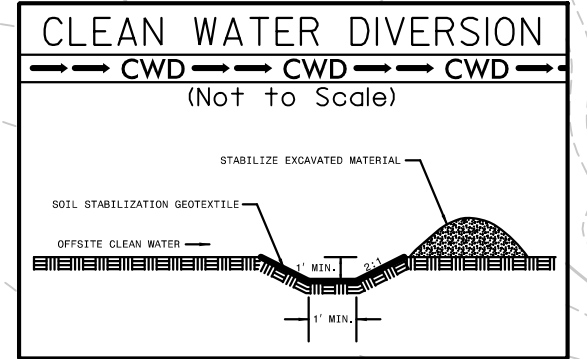
MATCH LINE -LREV- STA 380 + 50.00  
SEE SHEET 27

MATCH LINE -L- STA 395 + 00.00  
SEE SHEET 29

1.5 inch Skimmer with 1.25 inch Orifice Diameter 7 ft. weir with 2.25 ft. weir height ID 28.02B (See Earthen Dam with Skimmer Detail)

64 x 13 x 2 ID 28.01C

65 x 25 x 2 1.5 inch Skimmer with 0.75 inch Orifice Diameter 9 ft. weir ID 28.03B



5/14/2001 L.E.C.\_PSH28.dgn