

5/14/99

PROJECT REFERENCE NO.	SHEET NO.
R-5021	EC-27/CONST.27
RW SHEET NO.	
ROADWAY DESIGN ENGINEER	HYDRAULICS ENGINEER

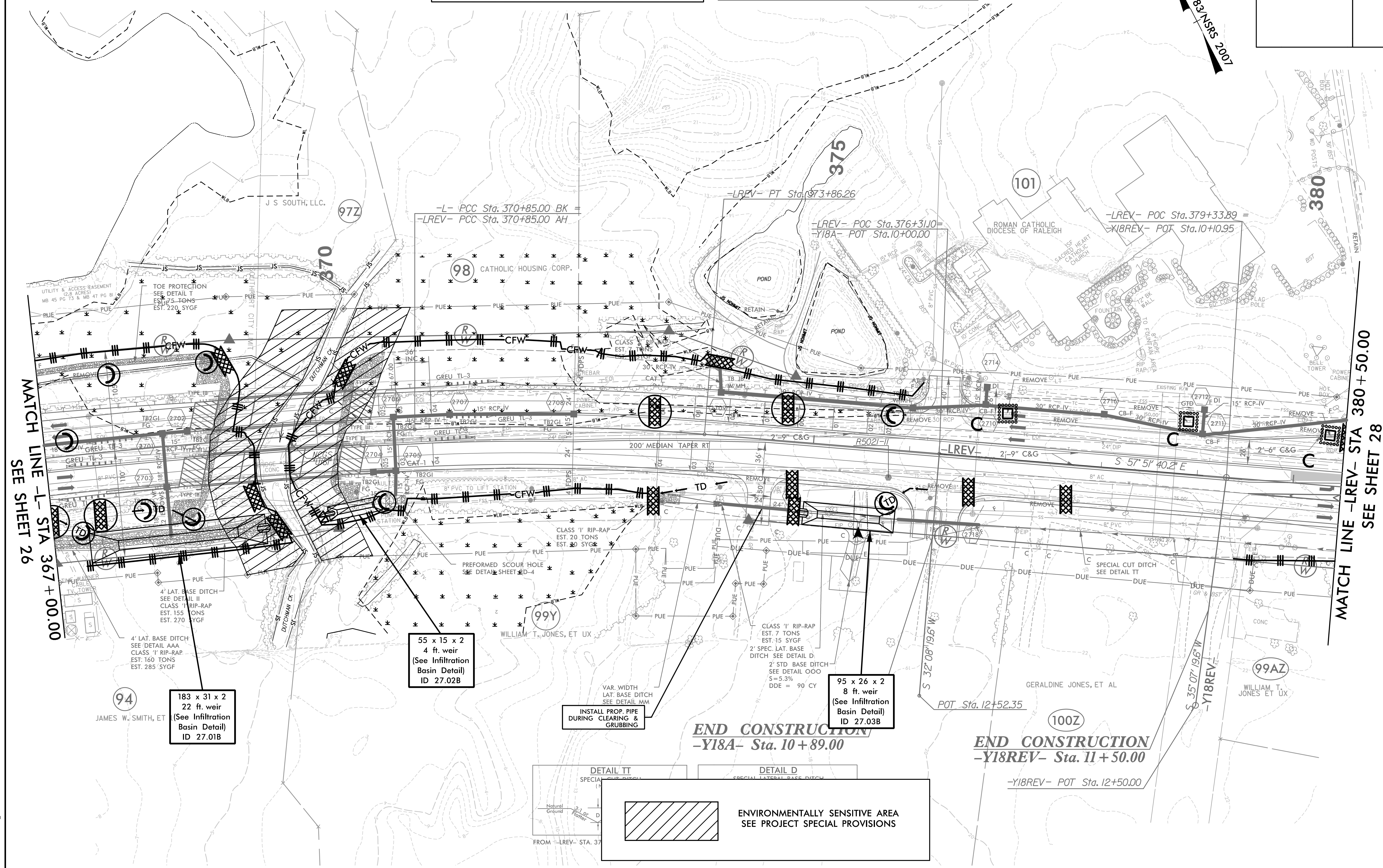
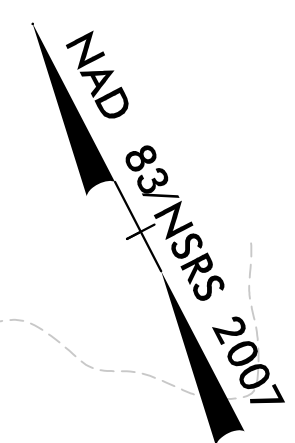
**HNTB** HNTB NORTH CAROLINA, P.C.  
 343 E. Six Forks Road, Suite 200  
 Raleigh, North Carolina 27609  
 NC License No: C-1554

NOTE:  
 UTILIZE COIR FIBER MATTING ADJACENT TO WETLANDS / JURISDICTIONAL AREAS, AND AS DIRECTED

CLEARING AND GRUBBING  
 EROSION CONTROL FOR  
 CONSTRUCTION SHEET 27

NOTE:  
 UTILIZE SPECIAL STILLING BASIN(S) AND / OR INFILTRATION BASINS AS STILLING BASINS WHERE APPLICABLE.

NOTE:  
 PLACE TEMPORARY ROCK SEDIMENT DAMS TYPE - B AND TEMPORARY ROCK SILT CHECKS TYPE - A AT DRAINAGE OUTLETS.



MATCH LINE -L- STA 367+00.00  
SEE SHEET 26

MATCH LINE -LREV- STA 380+50.00  
SEE SHEET 28

183 x 31 x 2  
 22 ft. weir  
 (See Infiltration Basin Detail)  
 ID 27.01B

55 x 15 x 2  
 4 ft. weir  
 (See Infiltration Basin Detail)  
 ID 27.02B

95 x 26 x 2  
 8 ft. weir  
 (See Infiltration Basin Detail)  
 ID 27.03B

DETAIL TT  
 SPECIAL LATERAL BASE DITCH

DETAIL D  
 SPECIAL LATERAL BASE DITCH

FROM -LREV- STA. 37

ENVIRONMENTALLY SENSITIVE AREA  
 SEE PROJECT SPECIAL PROVISIONS

4/2/2021 EC.PSH27.dgn