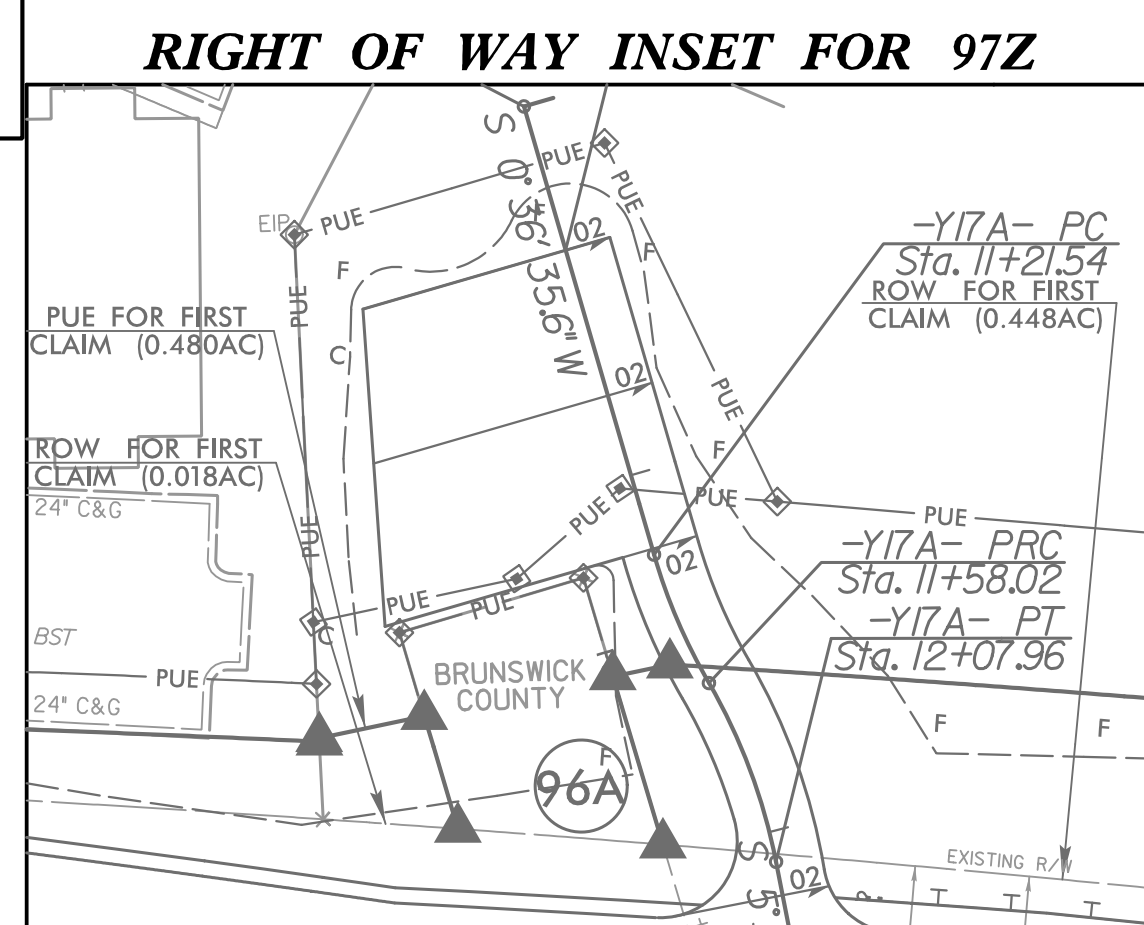
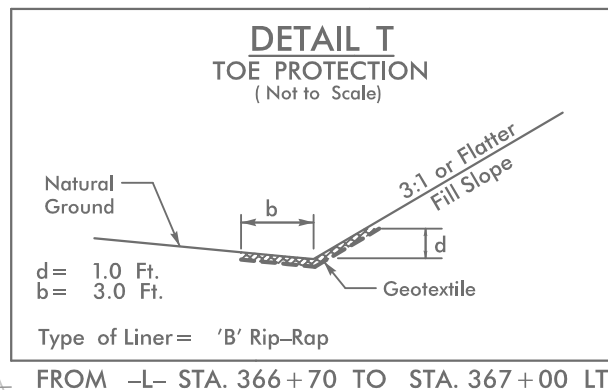
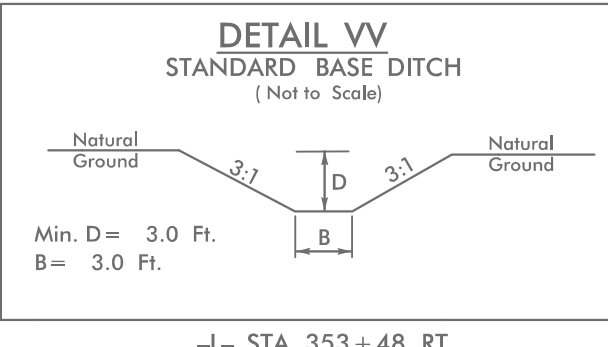
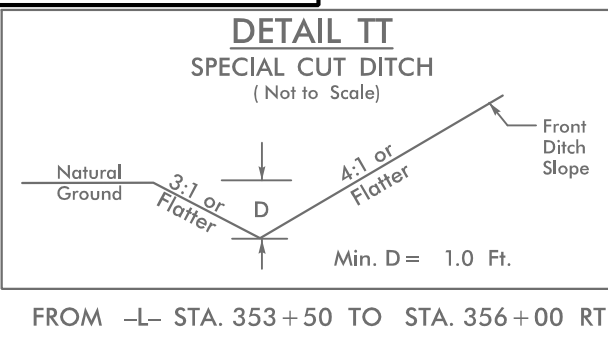
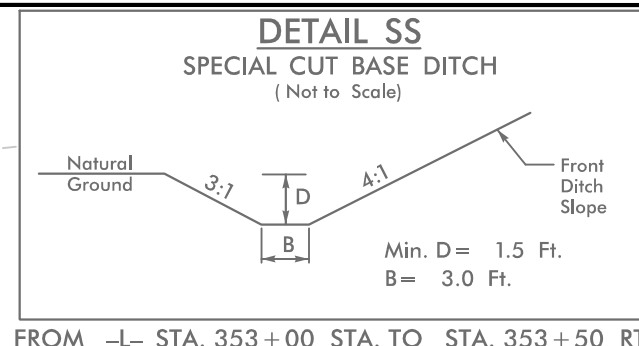


CLEARING AND GRUBBING
EROSION CONTROL FOR
CONSTRUCTION SHEET 26

NOTE:
PLACE TEMPORARY ROCK SEDIMENT DAMS TYPE - B
AND TEMPORARY ROCK SILT CHECKS TYPE - A AT
DRAINAGE OUTLETS.

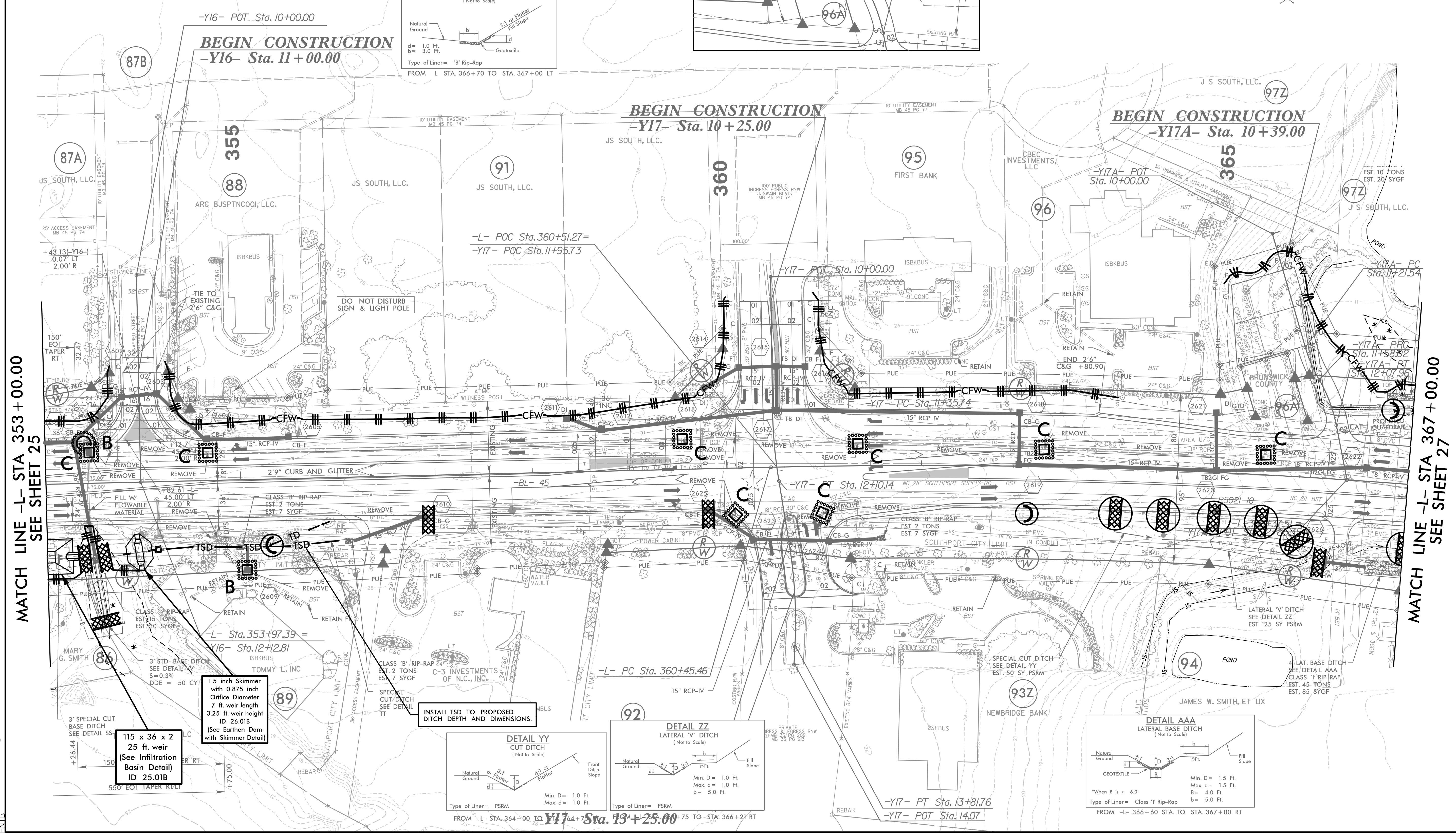
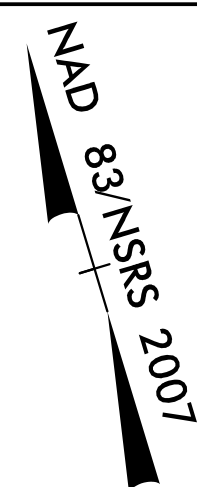
INSTALL FABRIC INSERT INLET PROTECTION DEVICE IN LIEU
OF ROCK INLET SEDIMENT TRAP TYPE 'C' AS DIRECTED.

NOTE:
UTILIZE COIR FIBER MATTING ADJACENT TO WETLANDS /JURISDICTIONAL
AREAS, AND AS DIRECTED



HNTB HNTB NORTH CAROLINA, P.C.
343 E. Six Forks Road, Suite 200
Raleigh, North Carolina 27609
NC License No: C-1554

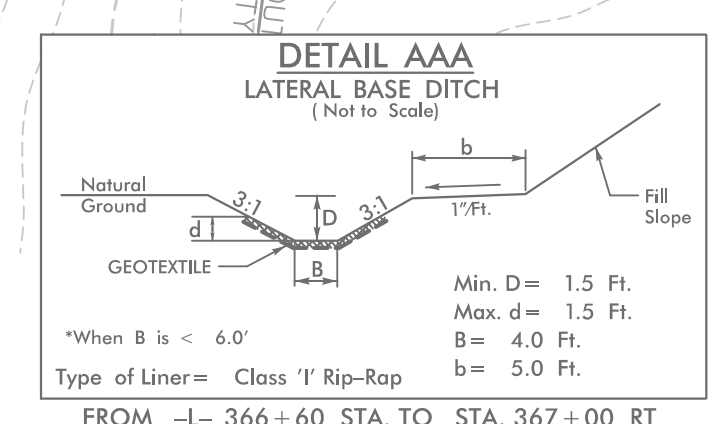
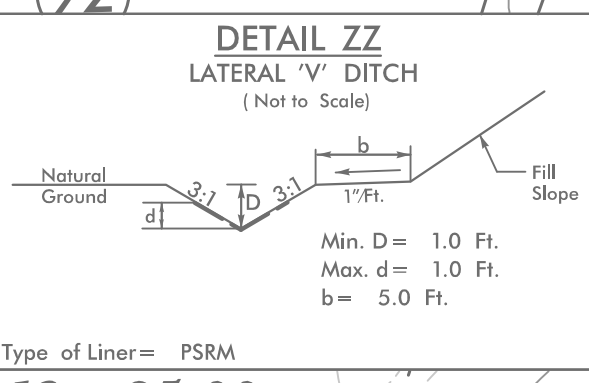
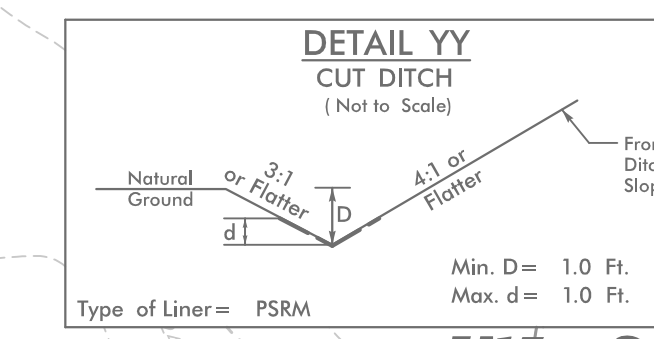
PROJECT REFERENCE NO. R-5021	SHEET NO. EC-26/CONST.26
RW SHEET NO.	
ROADWAY DESIGN ENGINEER	HYDRAULICS ENGINEER



115 x 36 x 2
25 ft. weir
(See Infiltration
Basin Detail)
ID 25,01B

1.5 inch Skimmer
with 0.875 inch
Orifice Diameter
7 ft. weir length
ID 26,01B
(See Earthen Dam
with Skimmer Detail)

INSTALL TSD TO PROPOSED
DITCH DEPTH AND DIMENSIONS.



5/14/2021-EC_PSH26.dgn