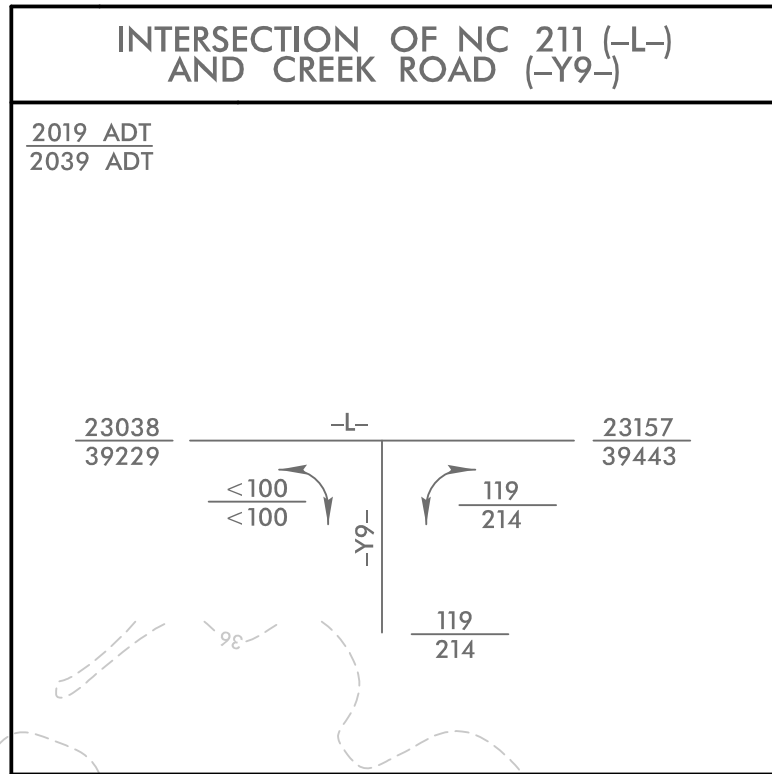


5/14/99



NOTE:
UTILIZE COIR FIBER MATTING ADJACENT TO WETLANDS / JURISDICTIONAL AREAS, AND AS DIRECTED

HNTB HNTB NORTH CAROLINA, P.C.
343 E. Six Forks Road, Suite 200
Raleigh, North Carolina 27609
NC License No: C-1554

PROJECT REFERENCE NO.	SHEET NO.
R-5021	EC-22/CONST.22
RW SHEET NO.	
ROADWAY DESIGN ENGINEER	HYDRAULICS ENGINEER

CLEARING AND GRUBBING
EROSION CONTROL FOR
CONSTRUCTION SHEET 22

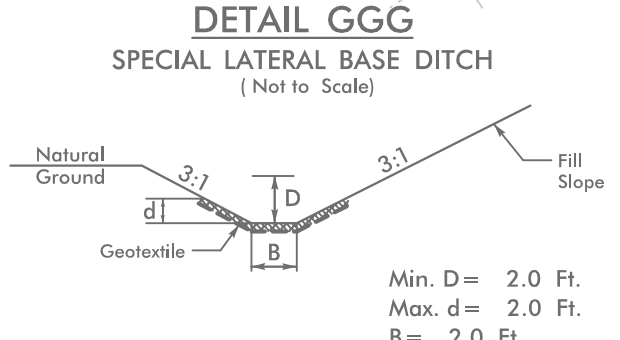
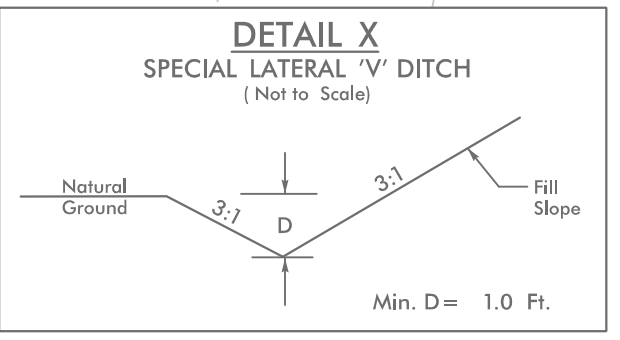
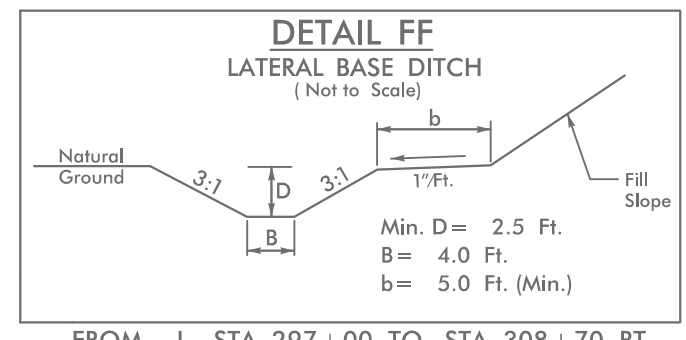
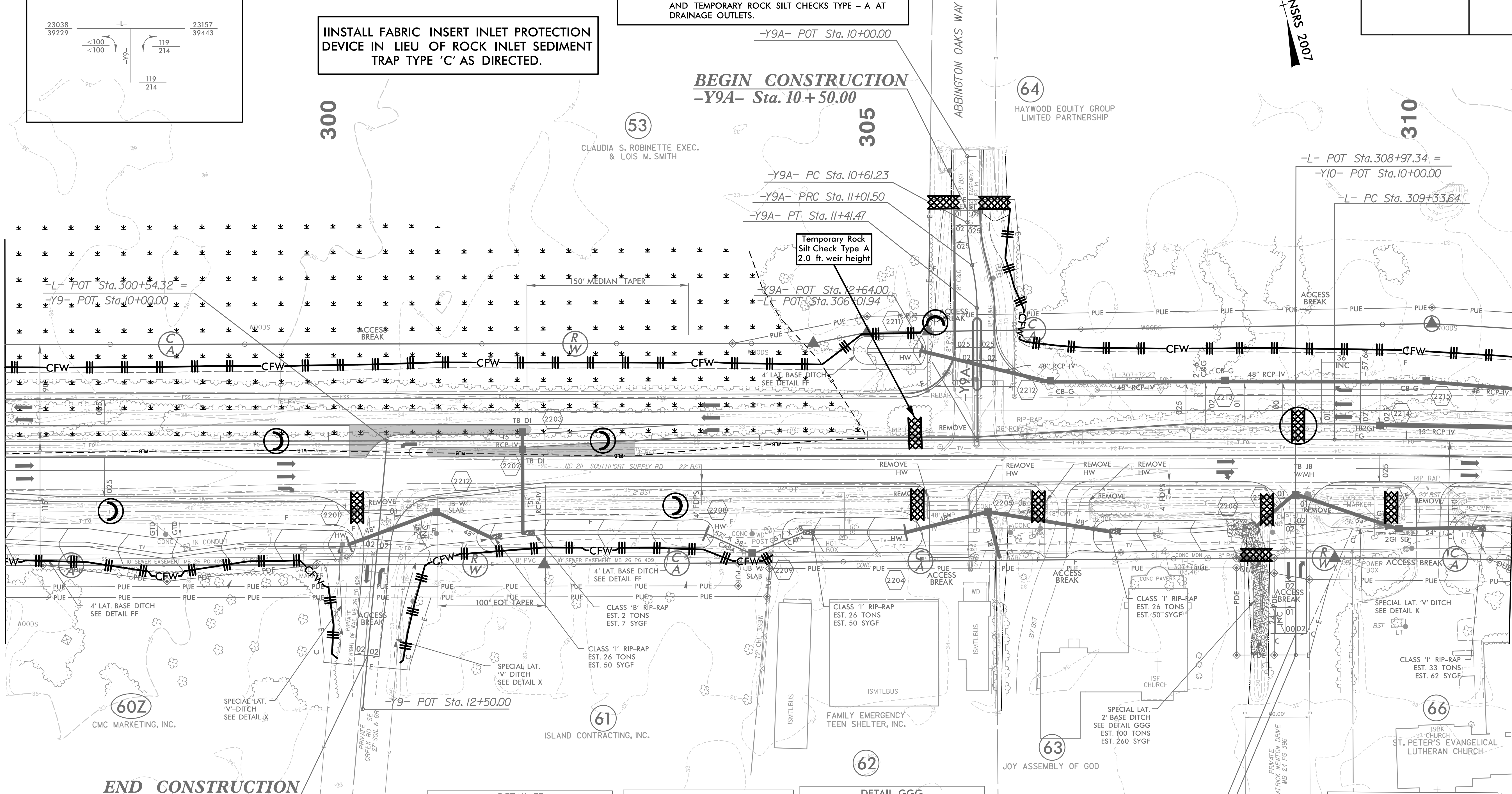
NOTE:
PLACE TEMPORARY ROCK SEDIMENT DAMS TYPE - B
AND TEMPORARY ROCK SILT CHECKS TYPE - A AT
DRAINAGE OUTLETS.

INSTALL FABRIC INSERT INLET PROTECTION
DEVICE IN LIEU OF ROCK INLET SEDIMENT
TRAP TYPE 'C' AS DIRECTED.

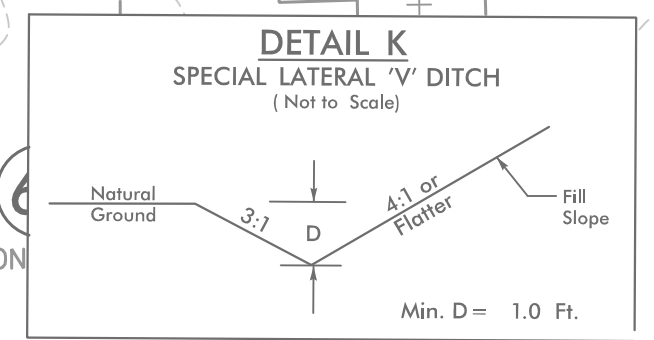
NAD
83NRS
2007

MATCH LINE -L- STA 297 + 00.00
SEE SHEET 21

MATCH LINE -L- STA 311 + 00.00
SEE SHEET 23



END CONSTRUCTION
-Y10- Sta. 11 + 80.00
-Y10- POT Sta. 12+00.00



10/13/2021 EC_PSH22.dgn