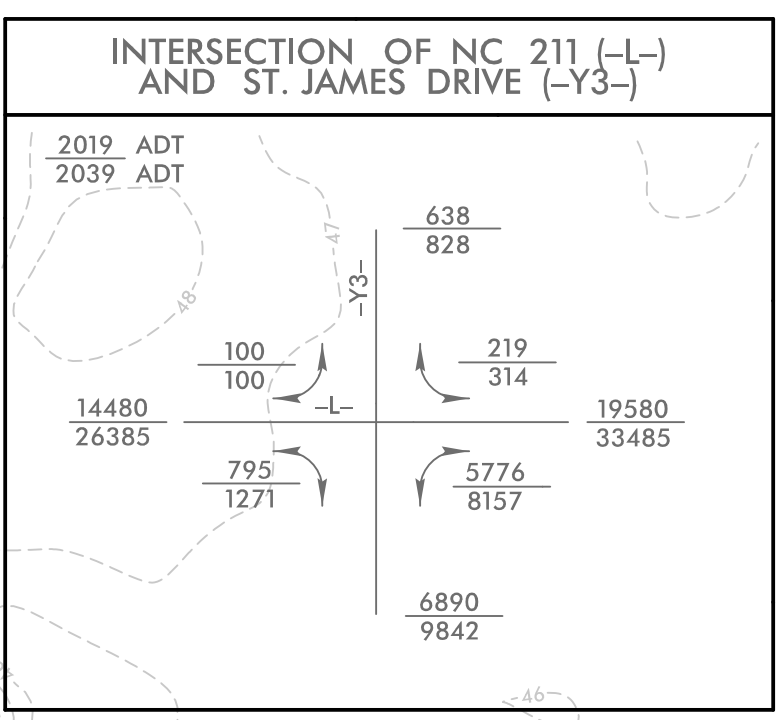
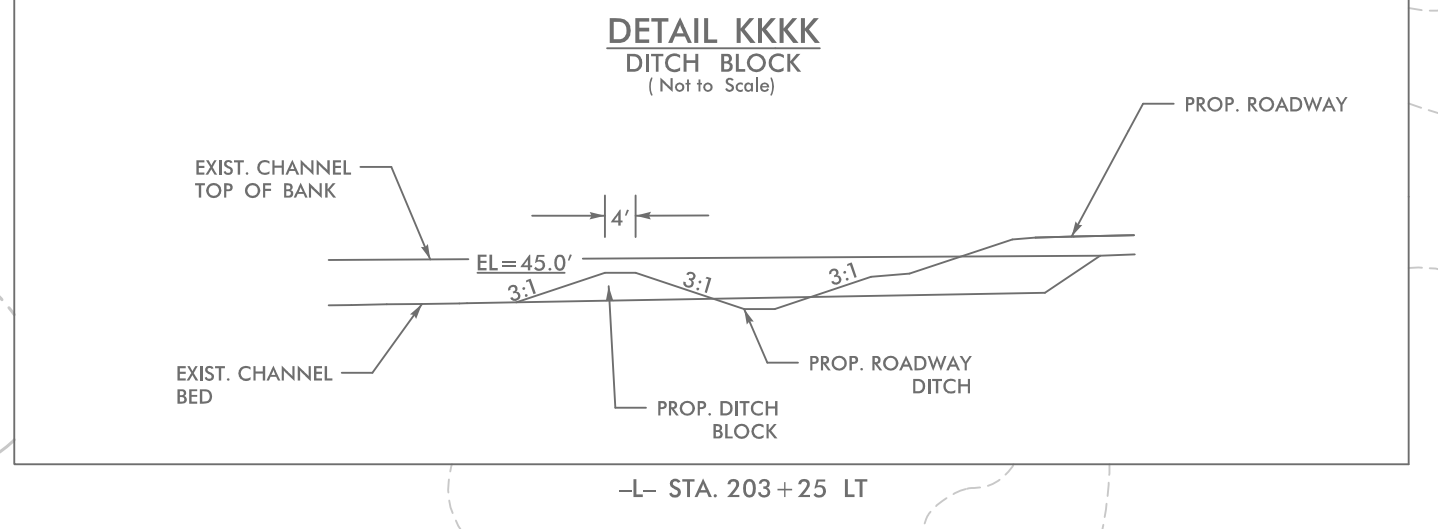


5/14/99

NOTE: PLACE TEMPORARY ROCK SEDIMENT DAMS TYPE - B AND TEMPORARY ROCK SILT CHECKS TYPE - A AT DRAINAGE OUTLETS.

NOTE: UTILIZE COIR FIBER MATTING ADJACENT TO WETLANDS /JURISDICTIONAL AREAS, AND AS DIRECTED

CLEARING AND GRUBBING EROSION CONTROL FOR CONSTRUCTION SHEET 15

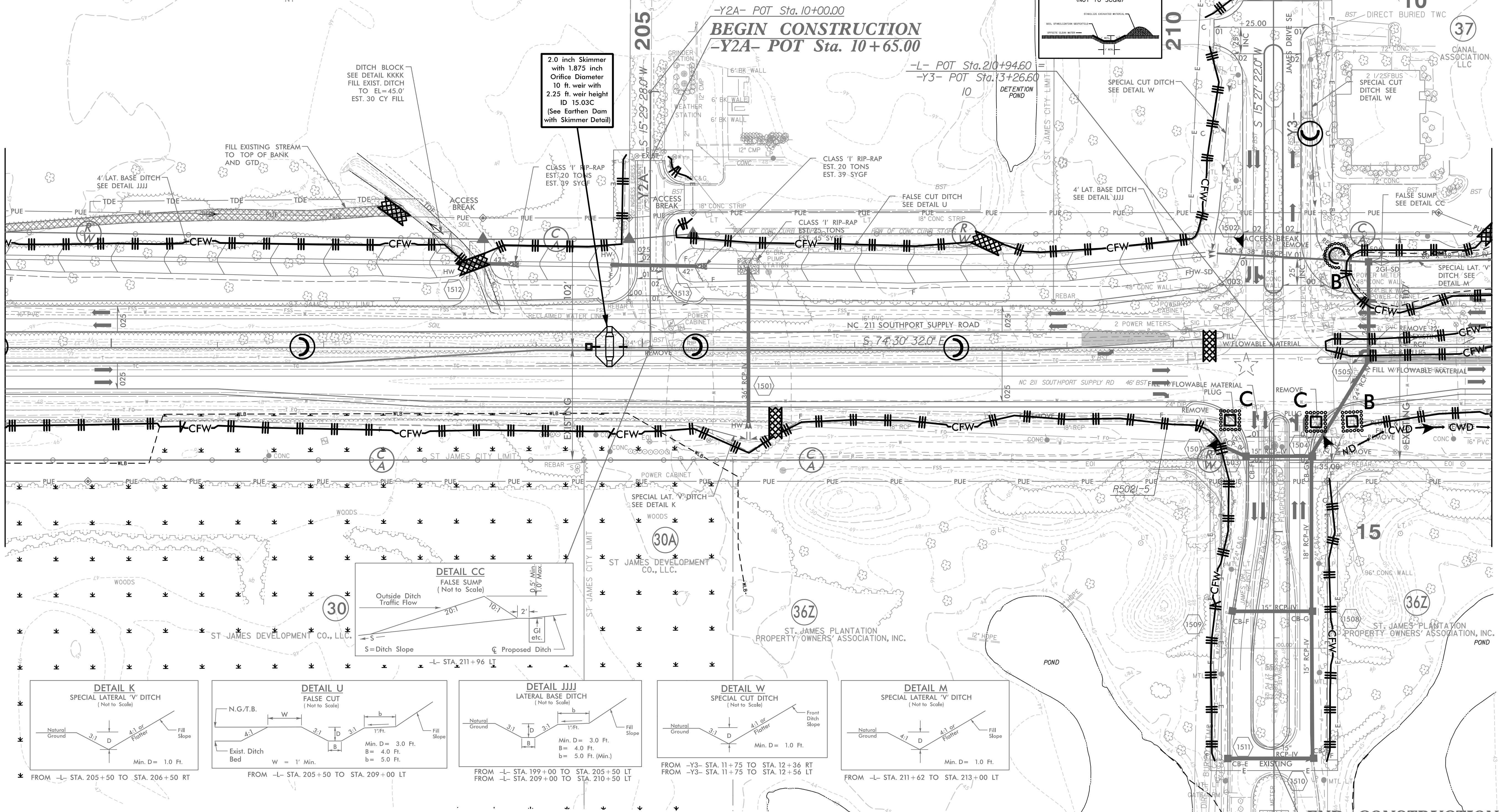


HNTB HNTB NORTH CAROLINA, P.C. 343 E. Six Forks Road, Suite 200 Raleigh, North Carolina 27609 NC License No: C-1554

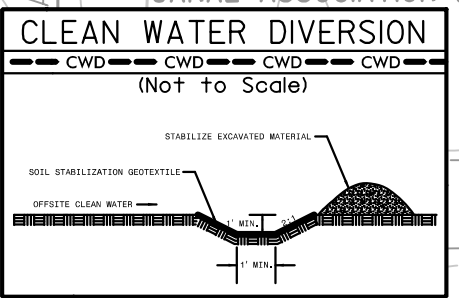
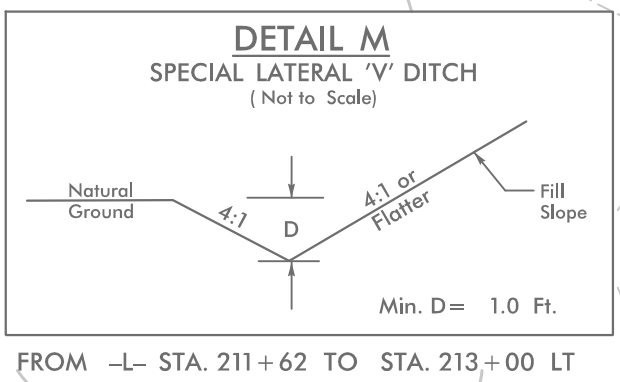
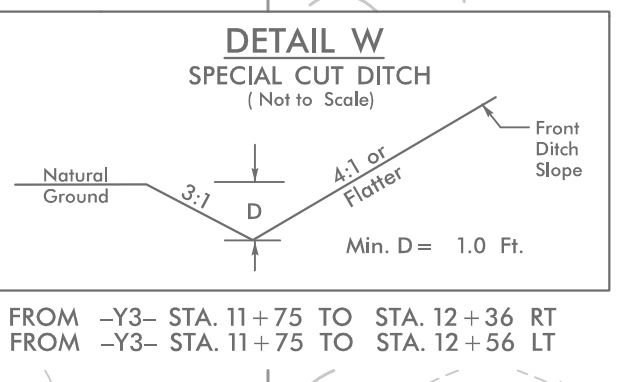
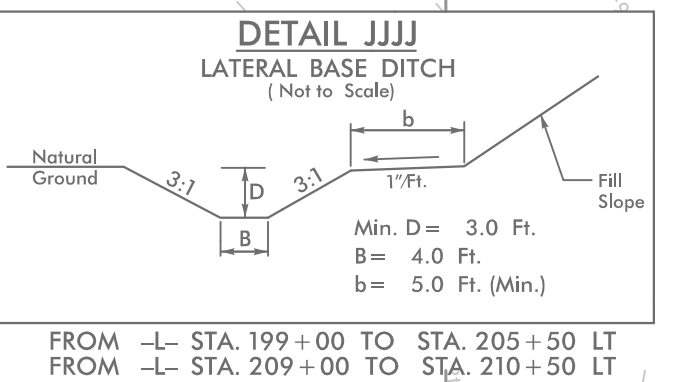
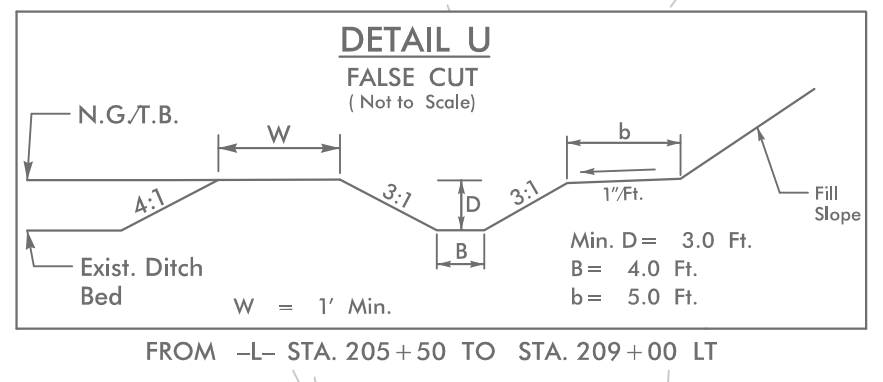
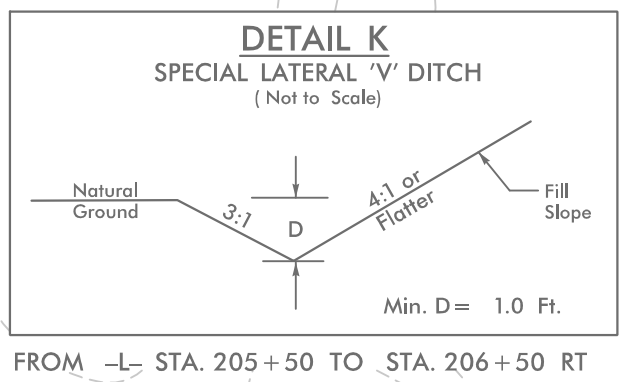
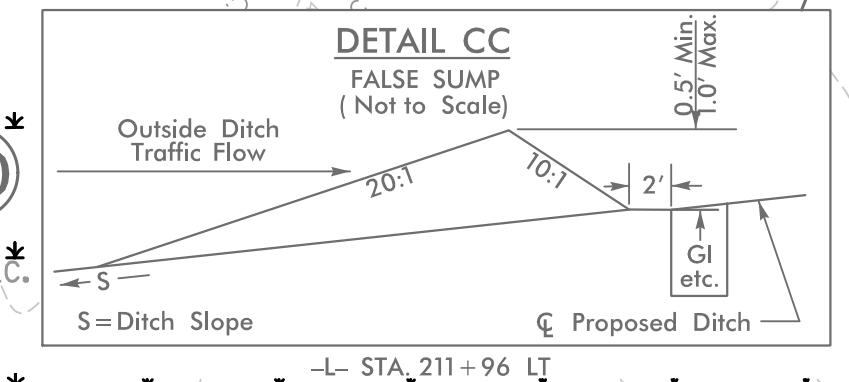
PROJECT REFERENCE NO.	SHEET NO.
R-5021	EC-15/CONST.15
RW SHEET NO.	
ROADWAY DESIGN ENGINEER	HYDRAULICS ENGINEER

MATCH LINE -L- STA 199 + 00.00 SEE SHEET 14

MATCH LINE -L- STA 213 + 00.00 SEE SHEET 16



2.0 inch Skimmer with 1.875 inch Office Diameter 10 ft. weir with 2.25 ft. weir height ID 15.03C (See Earthen Dam with Skimmer Detail)



END CONSTRUCTION -Y3- Sta. 17 + 15.00

FOR -L- PROFILE, SEE SHEET 46
FOR -Y2A- & -Y3- PROFILES, SEE SHEET 60
FOR INTERSECTION DETAIL, SEE SHEET 2B-1
FOR DRAINAGE DETAILS, SEE SHEETS 2D-1 THRU 2D-3

4/21/2021_EC_PSH15.dgn