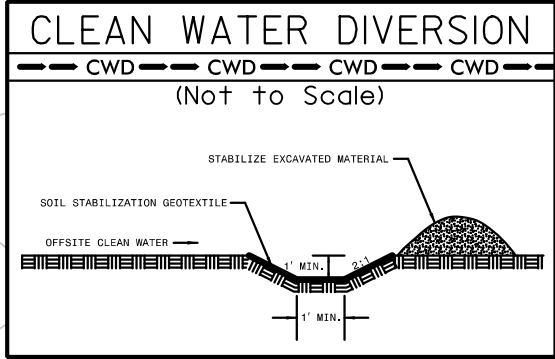


5/14/99

PROJECT REFERENCE NO.	SHEET NO.
	EC-7/CONST.7
RW SHEET NO.	
ROADWAY DESIGN ENGINEER	HYDRAULICS ENGINEER

NOTE: UTILIZE COIR FIBER MATTING ADJACENT TO WETLANDS /JURISDICTIONAL AREAS, AND AS DIRECTED

INSTALL PIPE(S) IN JURISDICTIONAL AREAS WITHOUT IMPACTING STREAM UNTIL AREA STABILIZED AND ACCORDING TO NCDOT BEST MANAGEMENT PRACTICES FOR CONSTRUCTION AND MAINTENANCE ACTIVITIES MANUAL.

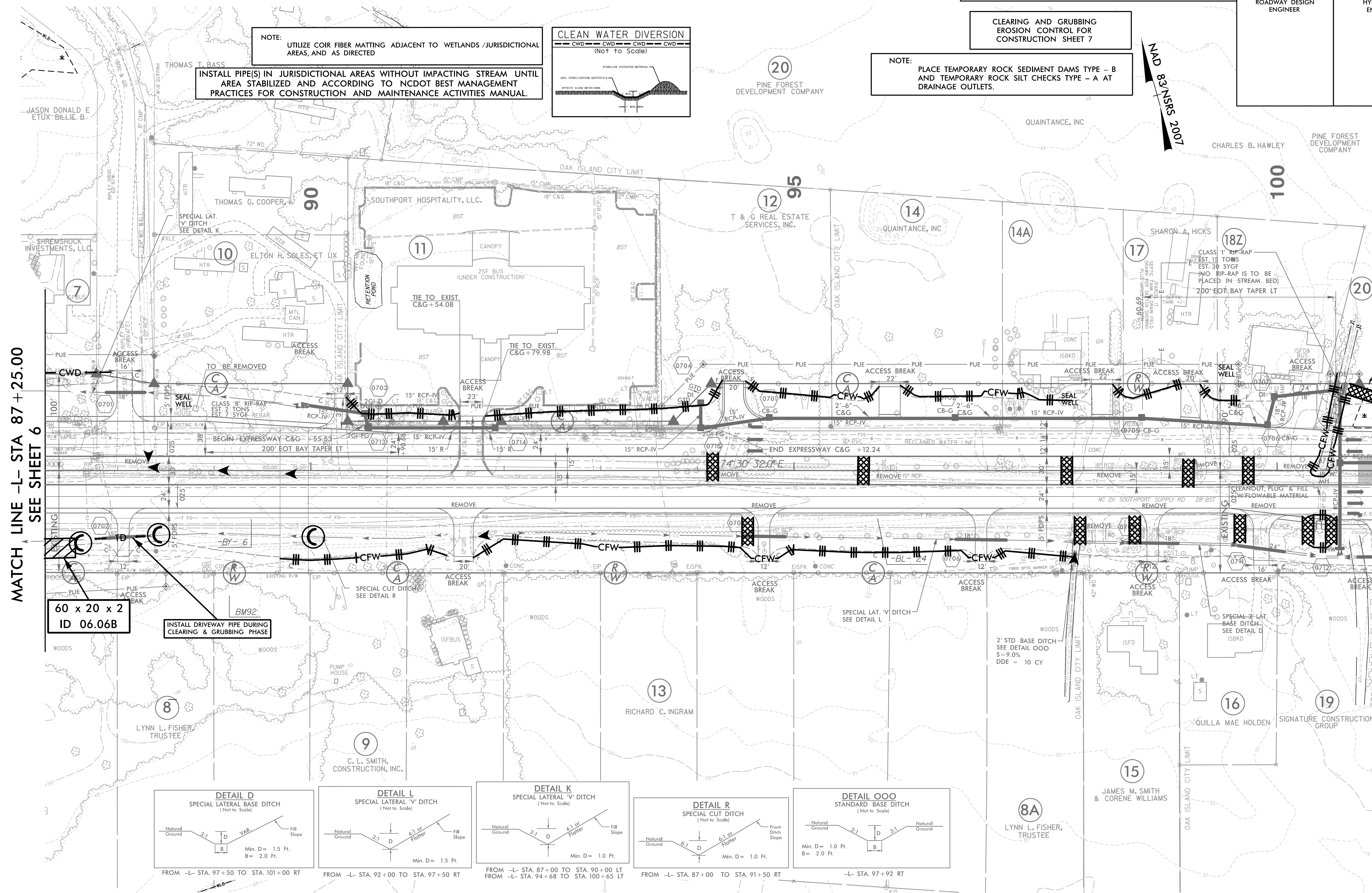


NOTE: PLACE TEMPORARY ROCK SEDIMENT DAMS TYPE - B AND TEMPORARY ROCK SILT CHECKS TYPE - A AT DRAINAGE OUTLETS.

MAD 8/1/NS/S 2007

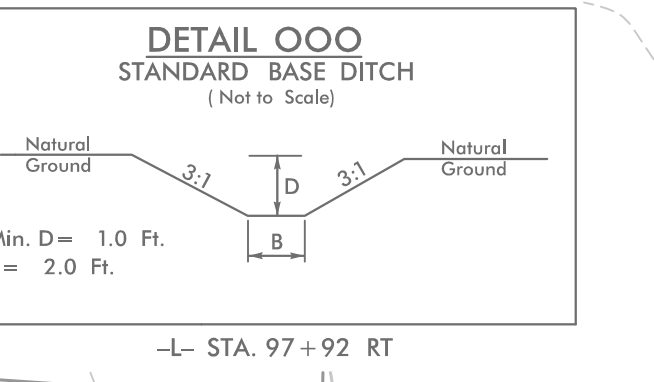
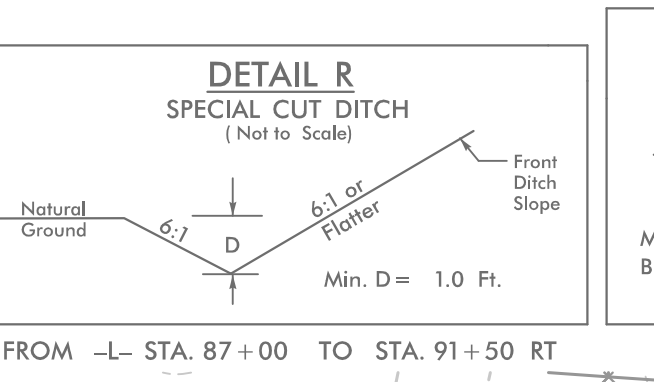
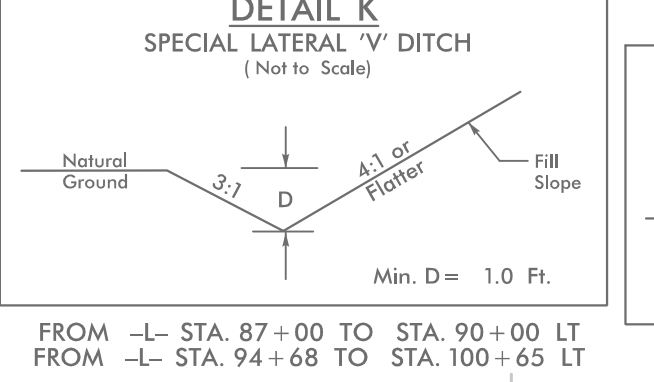
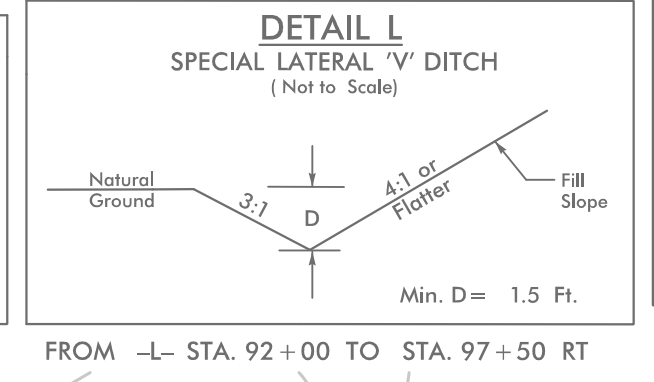
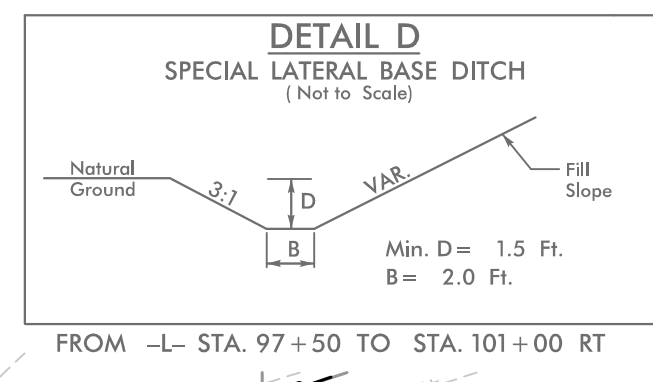
MATCH LINE -L- STA 87 + 25.00  
SEE SHEET 6

MATCH LINE -L- STA 101 + 00.00  
SEE SHEET 8



60 x 20 x 2  
ID 06.06B

INSTALL DRIVEWAY PIPE DURING CLEARING & GRUBBING PHASE



4/21/2008 L.E.C.\_PSHT.dgn