

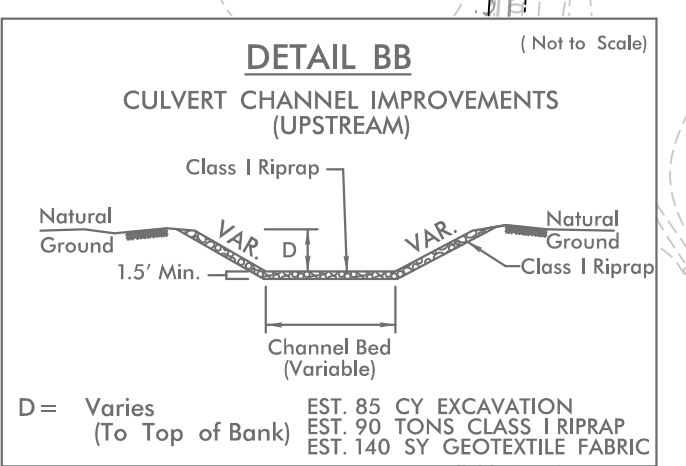
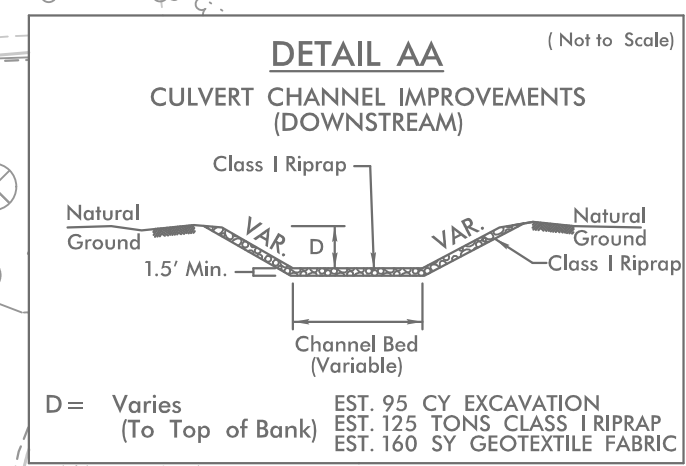
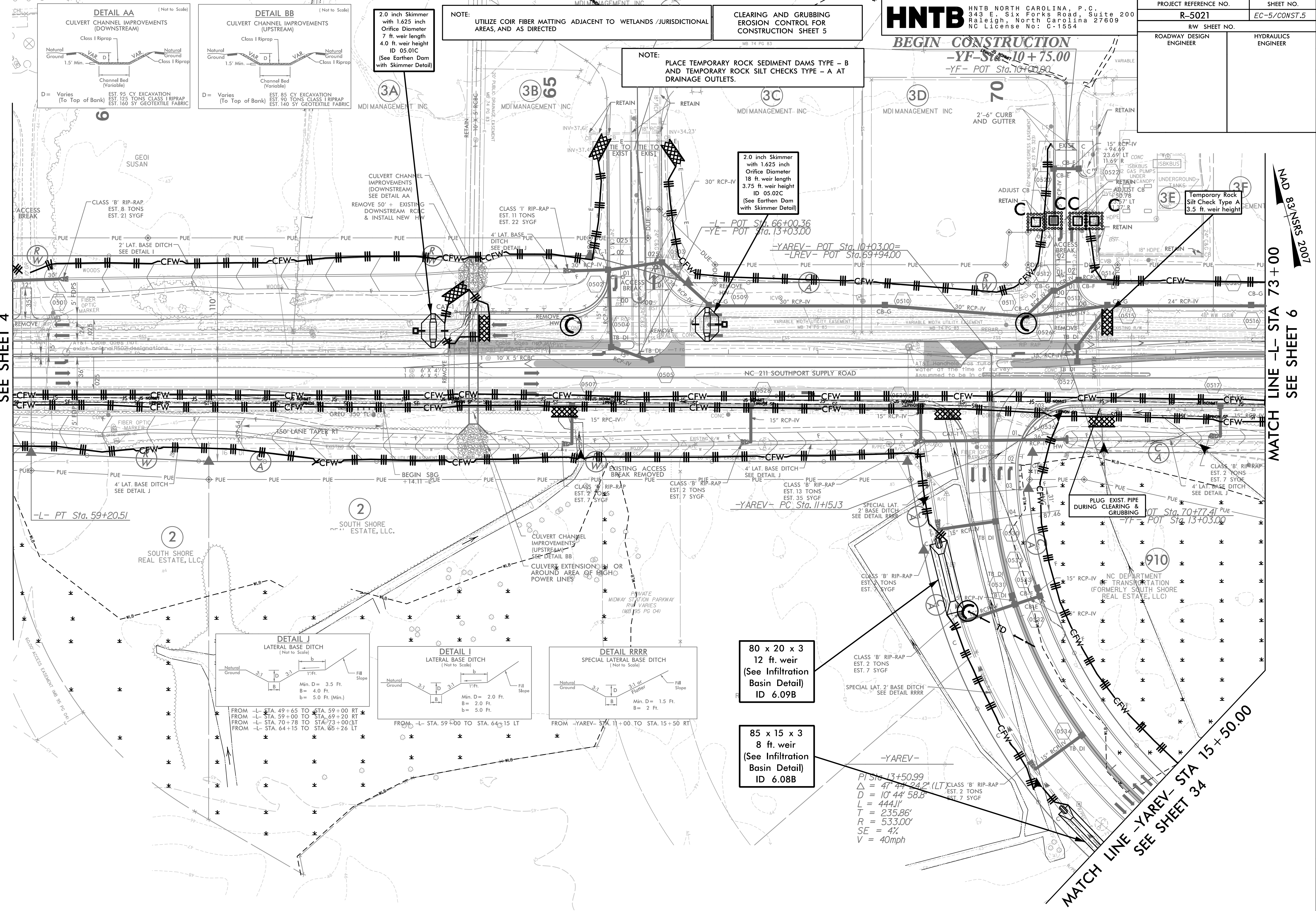
PROJECT REFERENCE NO.	SHEET NO.
R-5021	EC-5/CONST.5
RW SHEET NO.	
ROADWAY DESIGN ENGINEER	HYDRAULICS ENGINEER

HNTB HNTB NORTH CAROLINA, P.C.
 343 E. Six Forks Road, Suite 200
 Raleigh, North Carolina 27609
 NC License No: C-1554

BEGIN CONSTRUCTION
 -YF- Sta. 10+75.00
 -YF- POT Sta. 10+70.00

MATCH LINE -L- STA 59+00
SEE SHEET 4

MATCH LINE -L- STA 73+00
SEE SHEET 6



2.0 inch Skimmer with 1.625 inch Orifice Diameter 7 ft. weir length 4.0 ft. weir height ID 05.01C (See Earthen Dam with Skimmer Detail)

NOTE: UTILIZE COIR FIBER MATTING ADJACENT TO WETLANDS / JURISDICTIONAL AREAS, AND AS DIRECTED

NOTE: CLEARING AND GRUBBING EROSION CONTROL FOR CONSTRUCTION SHEET 5

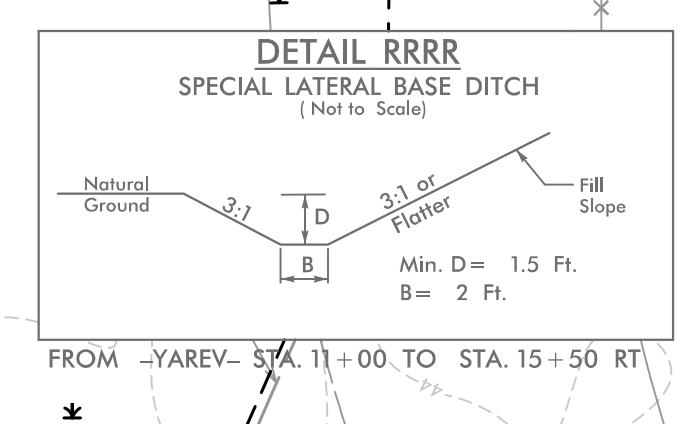
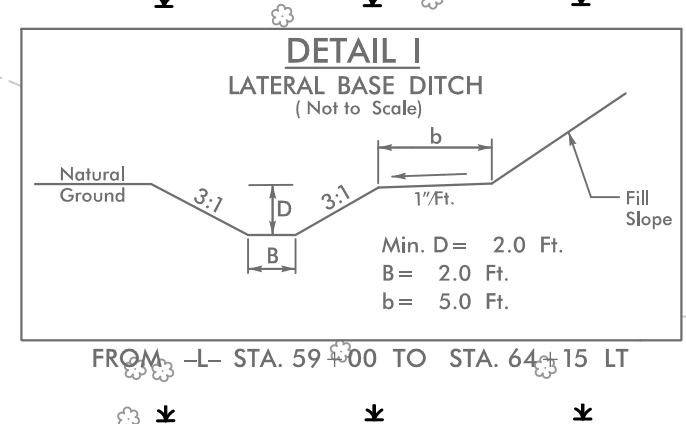
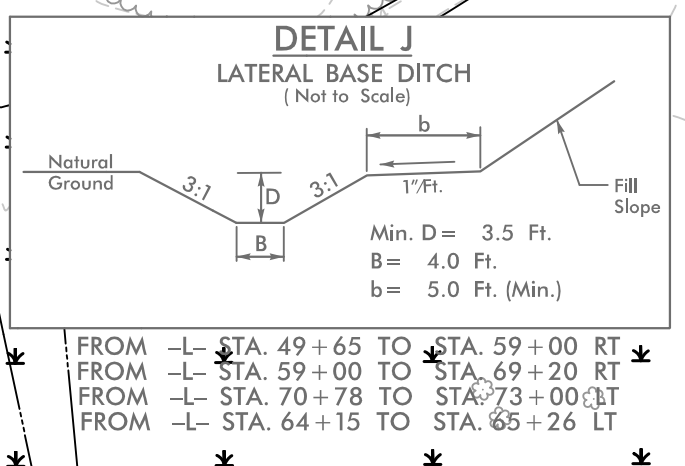
NOTE: PLACE TEMPORARY ROCK SEDIMENT DAMS TYPE - B AND TEMPORARY ROCK SILT CHECKS TYPE - A AT DRAINAGE OUTLETS.

2.0 inch Skimmer with 1.625 inch Orifice Diameter 18 ft. weir length 3.75 ft. weir height ID 05.02C (See Earthen Dam with Skimmer Detail)

Temporary Rock Silt Check Type A 3.5 ft. weir height

80 x 20 x 3 12 ft. weir (See Infiltration Basin Detail) ID 6.09B

85 x 15 x 3 8 ft. weir (See Infiltration Basin Detail) ID 6.08B



-YAREV-
 P/S Sta. 13+50.99
 $\Delta = 47' 44.242"$ (LT)
 D = 10' 44' 58.8"
 L = 444.1'
 T = 235.86'
 R = 533.00'
 SE = 4%
 V = 40mph