

MATCHLINE
-YREV- STA 35+00+/-
SEE SHEET TMP-130

MATCHLINE
-YREV- STA 48+50+/-
SEE SHEET TMP-156

REMOVE PAVEMENT

INSTALL PERMANENT SIGN 506

INSTALL SIGNAL POLE

-YREV- NC 906
(MIDDLETON BLVD)

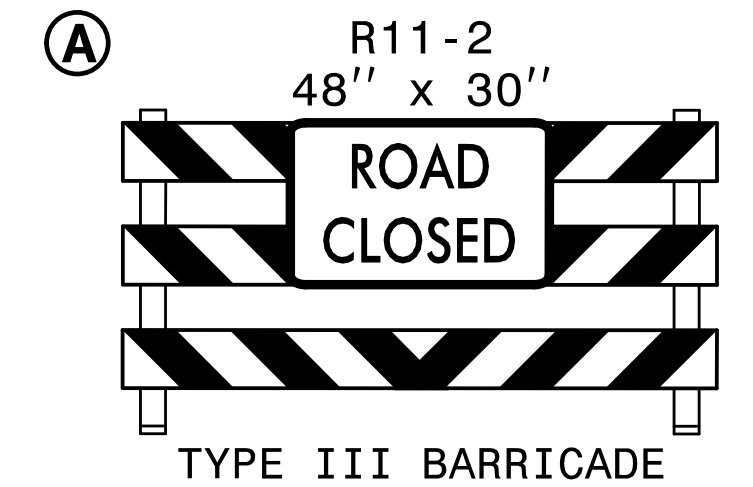
CONSTRUCT PROPOSED
MONOLITHIC ISLAND

LEFT LANE IS
CLOSED WITH DRUMS

REMOVE PAVEMENT

CONSTRUCT ISLAND

REMOVE CONFLICTING PAVEMENT MARKING.
INSTALL APPLICABLE PERMANENT SIGNS.



3:24:21 PM
\\TC\p\5021\fc_d\3d29.dgn
\$\$\$\$\$USERNAME\$\$\$\$\$

-YAREV- STA 16+05+/-
-YAREV- STA 15+92+/-

MATCHLINE
-YAREV- STA 15+50+/-
SEE SHEET TMP-130

HNTB
HNTB NORTH CAROLINA, P.C.
343 E. SIX FORKS ROAD, SUITE 200
RALEIGH, NORTH CAROLINA 27609
NC LICENSE NO: C-1554

APPROVED: *Helen Shyu*
DATE: 10/28/2021
SEAL
NORTH CAROLINA
PROFESSIONAL
ENGINEER
HELEN SHYU
042517

DOCUMENT NOT CONSIDERED FINAL
UNLESS ALL SIGNATURES COMPLETED

DIVISION OF HIGHWAYS
STATE OF NORTH CAROLINA
DEPARTMENT OF TRANSPORTATION
WORK ZONE TRAFFIC CONTROL

TRANSPORTATION
MANAGEMENT PLAN

PHASE III
DETAIL