

USING DRUMS AND LANE CLOSURES
CONSTRUCT PROPOSED CURB AND GUTTER
AND MEDIAN MONOLITHIC ISLANDS.

REMOVE TEMPORARY
PAVEMENT

REMOVE PCB, TEMP PAVEMENT
& SHORING. CONSTRUCT PROPOSED
SHOULDER & GUARDRAIL.

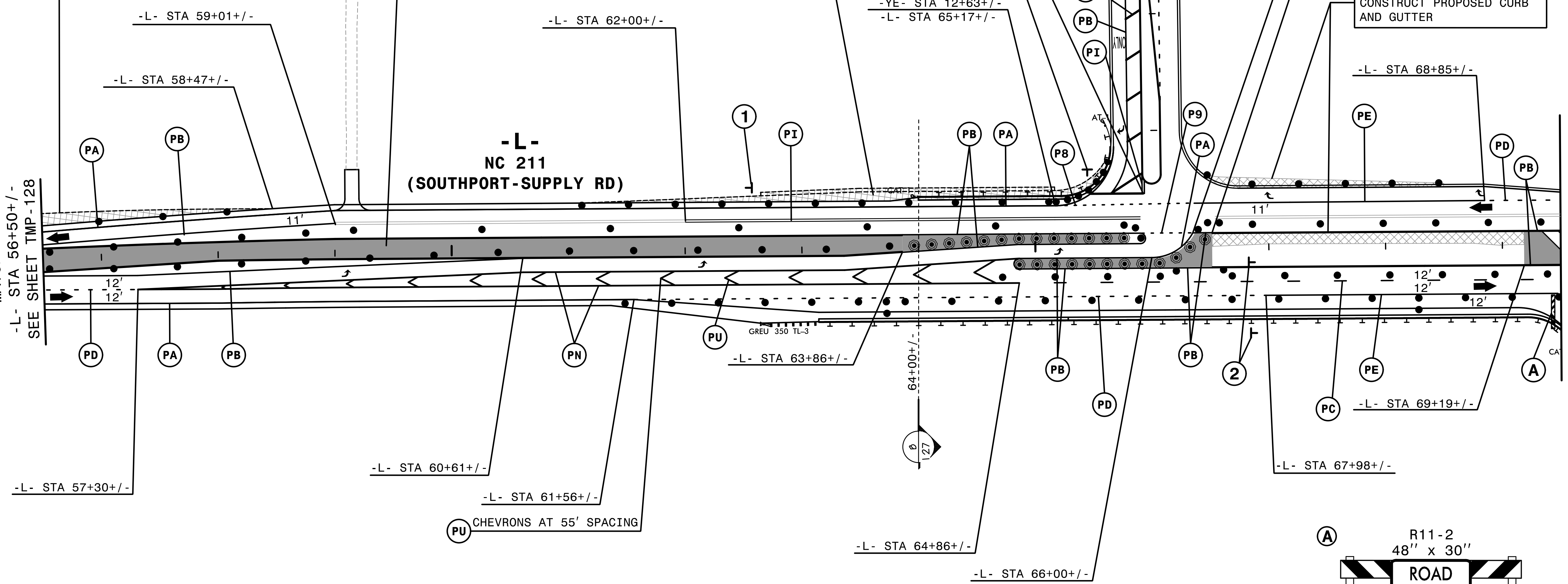
INSTALL PROPOSED
SIGN #403 AND 404.

REMOVE TEMPORARY PAVEMENT
CONSTRUCT PROPOSED CURB
AND GUTTER

MATCHLINE
-L- STA 56+50+/-
SEE SHEET TMP-128

MATCHLINE
-L- STA 69+50+/-
SEE SHEET TMP-130

-L-
NC 211
(SOUTHPORT-SUPPLY RD)



-L- STA 57+30+/-

PA PB

PD PA PB

-L- STA 60+61+/-

-L- STA 61+56+/-

PU CHEVRONS AT 55' SPACING

-L- STA 62+00+/-

1 PI

P2 -YE- STA 12+54+/-

-YE- STA 12+63+/-
-L- STA 65+17+/-

PB PA

PB PA

PB PD

-L- STA 66+00+/-

-L- STA 66+35

-L- STA 66+51

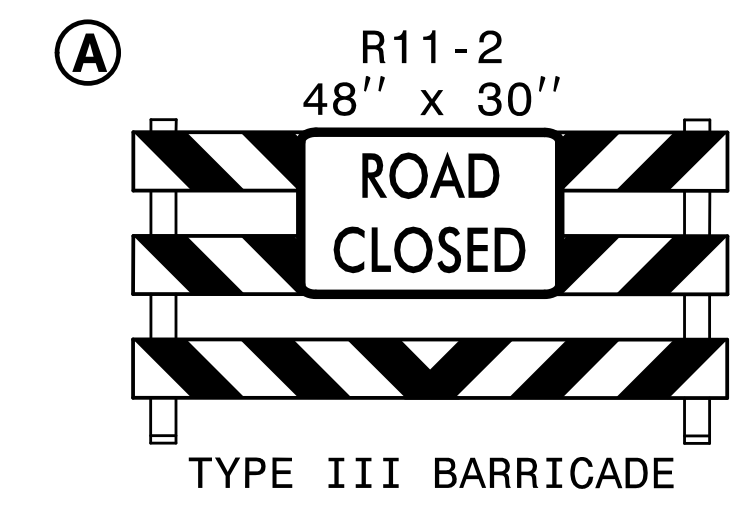
-L- STA 68+85+/-

PE

-L- STA 67+98+/-

PC

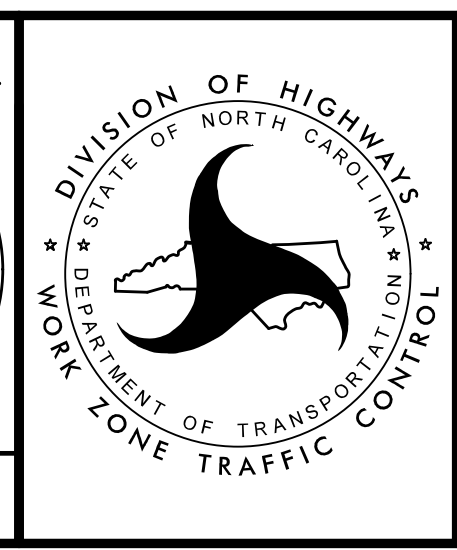
-L- STA 69+19+/-



REMOVE CONFLICTING PAVEMENT MARKING.
INSTALL APPLICABLE PERMANENT SIGNS.



APPROVED: *Helen Shyu*
DATE: 10/28/2021
SEAL
DOCUMENT NOT CONSIDERED FINAL
UNLESS ALL SIGNATURES COMPLETED



TRANSPORTATION
MANAGEMENT PLAN

PHASE III
DETAIL

3:24:14 PM
\\TC\p\5021\fc_dp3d2.dgn
\$\$\$\$\$USERNAME\$\$\$\$\$