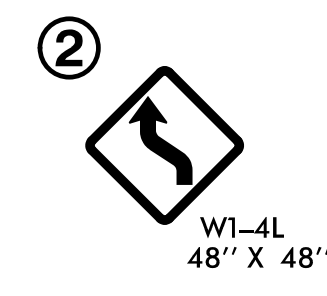
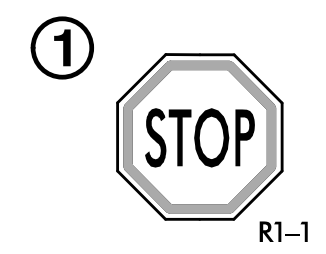


PROJ. REFERENCE NO.	SHEET NO.
R-5021	TMP-93

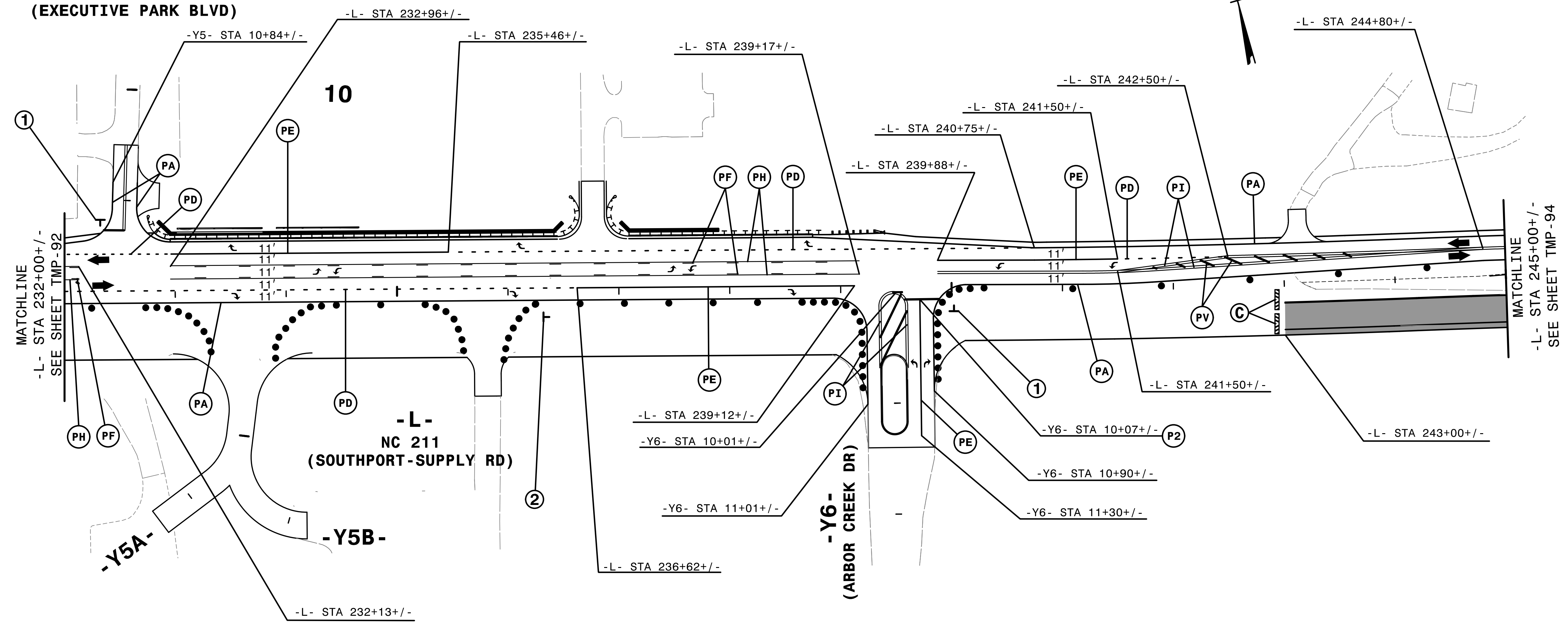


**-Y5-
(EXECUTIVE PARK BLVD)**

235

240

245



MATCHLINE
-L- STA 232+00+/-
SEE SHEET TMP-92

MATCHLINE
-L- STA 245+00+/-
SEE SHEET TMP-94

PH PF

PA

**-L-
NC 211
(SOUTHPORT-SUPPLY RD)**

PD

-L- STA 239+12+/-

-Y6- STA 10+01+/-

-Y6- STA 11+01+/-

-L- STA 236+62+/-

**-Y6-
(ARBOR CREEK DR)**

PE

-Y6- STA 10+90+/-

-Y6- STA 11+30+/-

-L- STA 241+50+/-

-Y6- STA 10+07+/-

-Y6- STA 10+90+/-

-Y6- STA 11+30+/-

PV

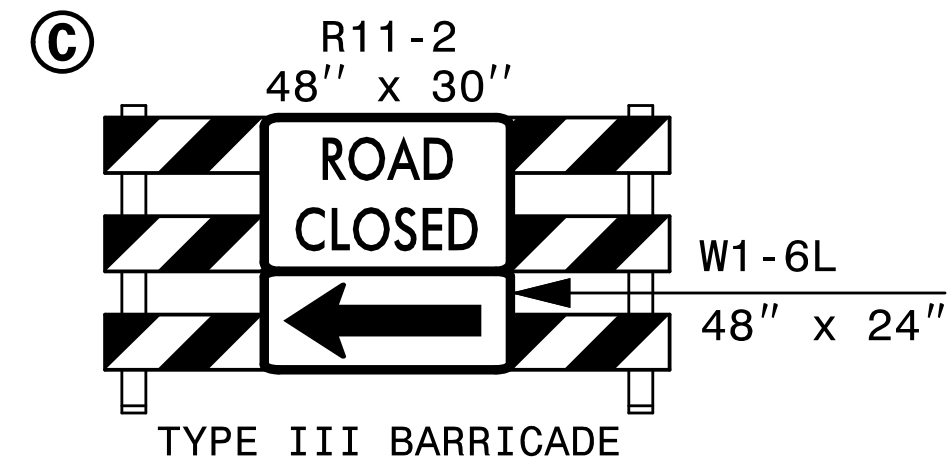
C

-L- STA 243+00+/-

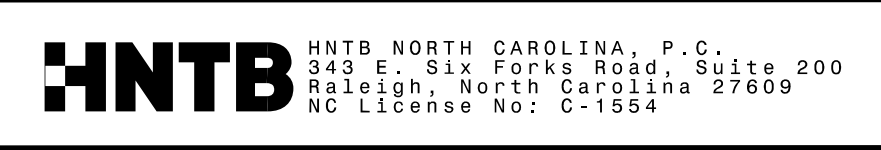
-Y5A-

-Y5B-

-L- STA 232+13+/-



REMOVE CONFLICTING PAVEMENT MARKING.

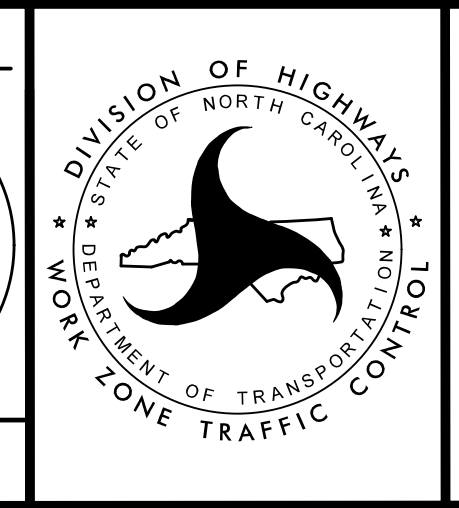


APPROVED: *Helen Skyy*
DATE: 2/6/2019

SEAL

PROFESSIONAL SEAL
042517
ENGINEER
HELEN SKYY

DOCUMENT NOT CONSIDERED FINAL
UNLESS ALL SIGNATURES COMPLETED



TRANSPORTATION
MANAGEMENT PLAN

PHASE II
DETAIL

2/6/2019
C:\CPV\5021\to_p2.dwg
HNTB