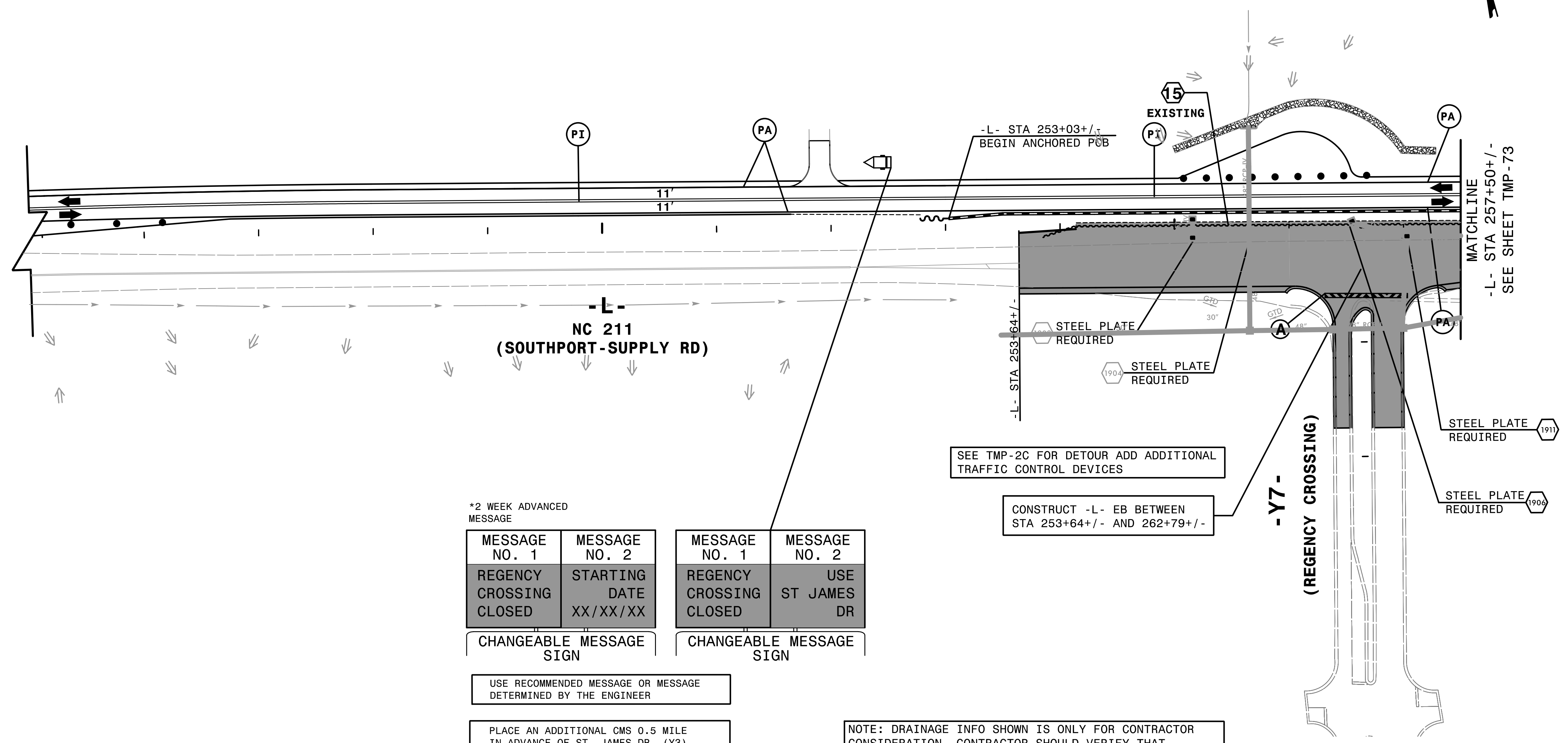


245

250

255



\*2 WEEK ADVANCED MESSAGE

MESSAGE NO. 1	MESSAGE NO. 2
REGENCY CROSSING CLOSED	STARTING DATE XX/XX/XX

CHANGEABLE MESSAGE SIGN

MESSAGE NO. 1	MESSAGE NO. 2
REGENCY CROSSING CLOSED	USE ST JAMES DR

CHANGEABLE MESSAGE SIGN

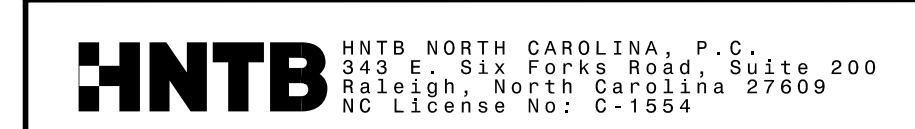
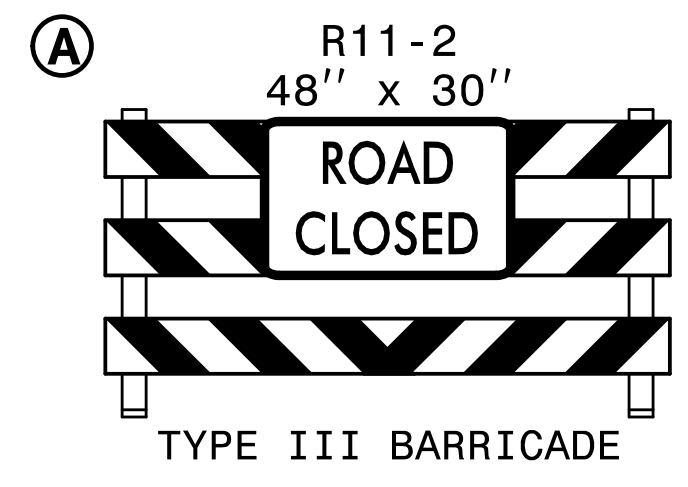
USE RECOMMENDED MESSAGE OR MESSAGE DETERMINED BY THE ENGINEER

PLACE AN ADDITIONAL CMS 0.5 MILE IN ADVANCE OF ST. JAMES DR. (Y3) SEE TMP- 2C

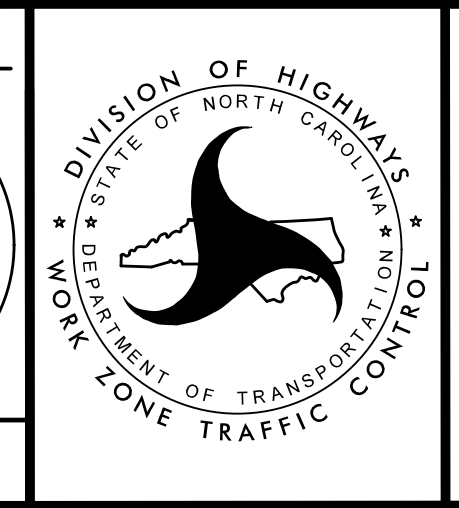
SEE TMP-2C FOR DETOUR ADD ADDITIONAL TRAFFIC CONTROL DEVICES

CONSTRUCT -L- EB BETWEEN STA 253+64+/- AND 262+79+/-

NOTE: DRAINAGE INFO SHOWN IS ONLY FOR CONTRACTOR CONSIDERATION. CONTRACTOR SHOULD VERIFY THAT PONDING OF WATER WILL NOT OCCUR IN THE TRAVEL LANES.



APPROVED: *Helen Shyu*  
 DATE: 11/10/2021  
 SEAL  
 PROFESSIONAL ENGINEER  
 HELLEN SHYU  
 NO. 19 CAROLINA  
 SEAL 042517  
 ENGINEER



TRANSPORTATION MANAGEMENT PLAN  
 PHASE IB  
 STEP 13.6  
 DETAIL

4:56:29 PM  
 ...\\TCF\T5021\_Tc\_p\dl2e.dgn  
 \$\$\$USERNAME\$\$\$