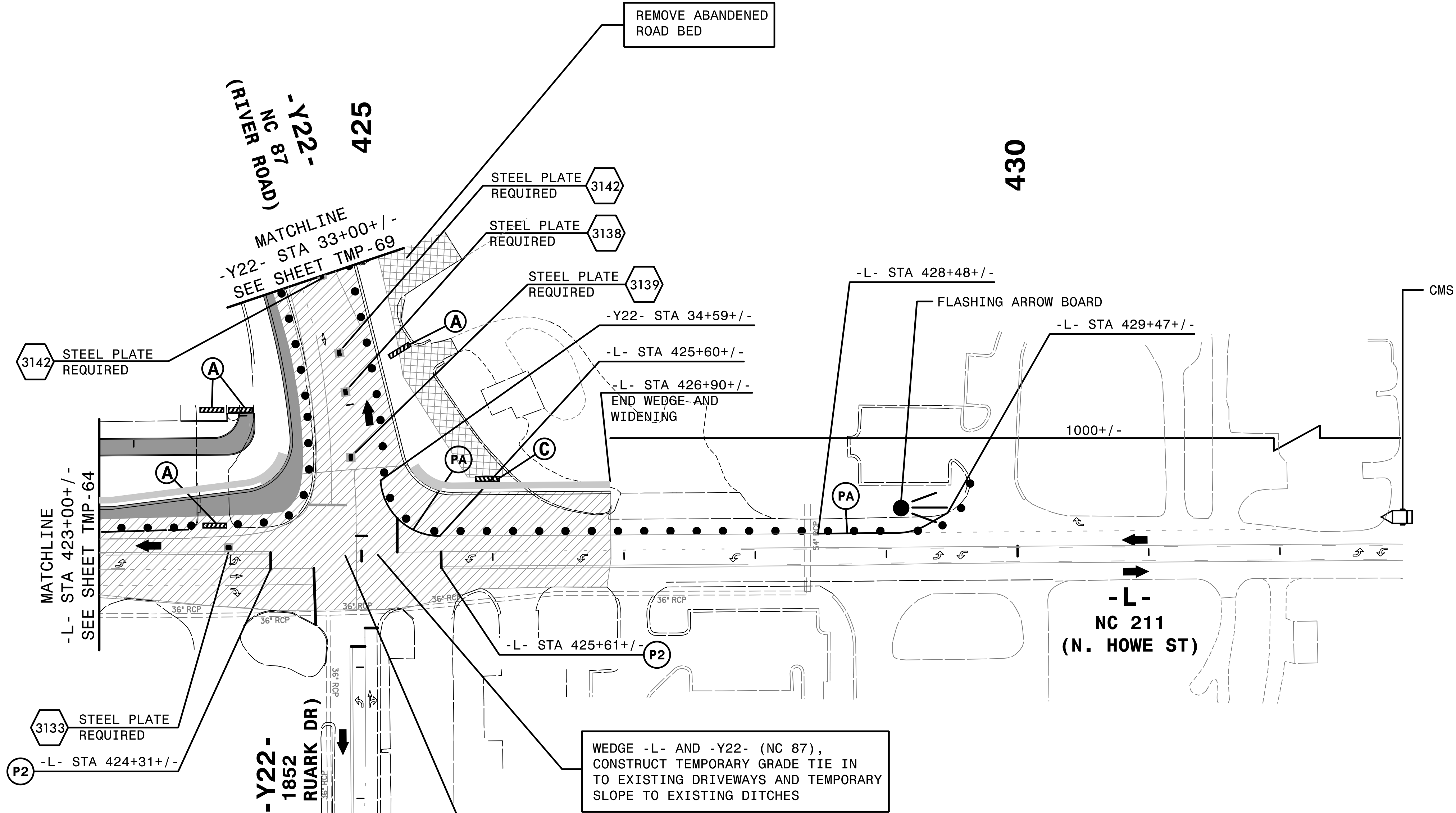


REPLACE PAVEMENT MARKING IN EXISTING PATTERN.



MESSAGE NO. 1	MESSAGE NO. 2
RIGHT TURN CLOSED	TURN AT SIGNAL
CHANGEABLE MESSAGE SIGN	

NOTE: USE RECOMMENDED MESSAGE OR MESSAGE DETERMINED BY THE ENGINEER

STEEL PLATE REQUIRED
3133
-L- STA 424+31+/-

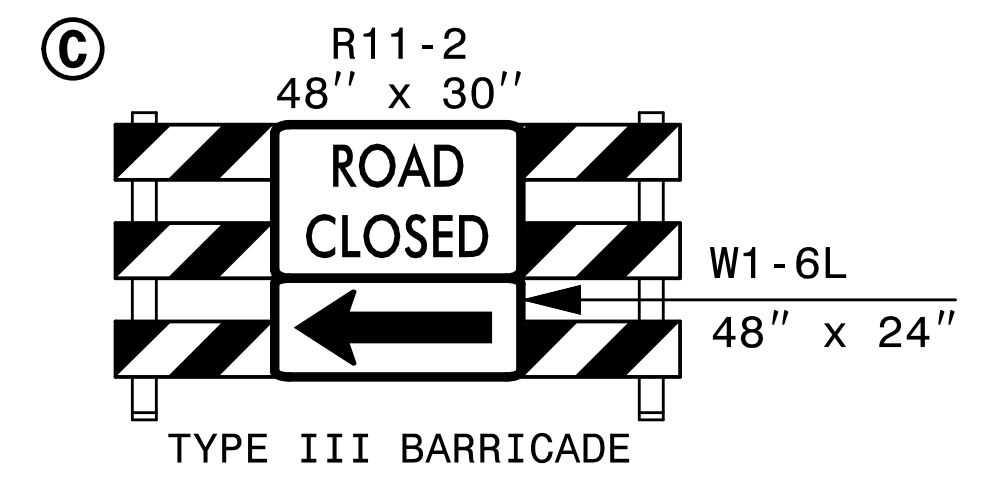
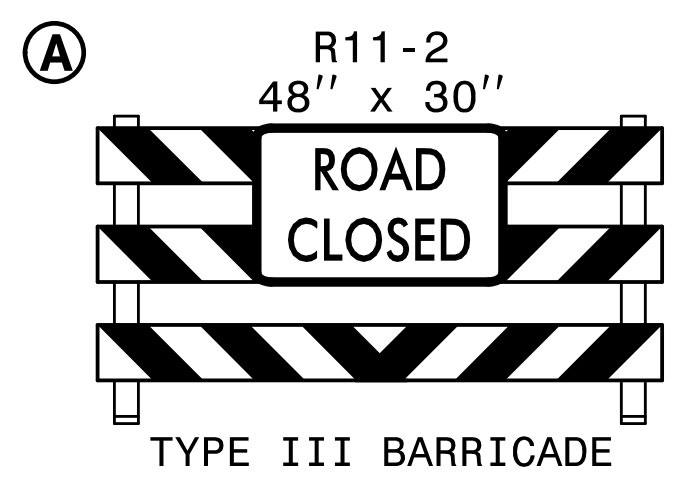
STEEL PLATE REQUIRED
3142

STEEL PLATE REQUIRED
3142

STEEL PLATE REQUIRED
3138

STEEL PLATE REQUIRED
3139

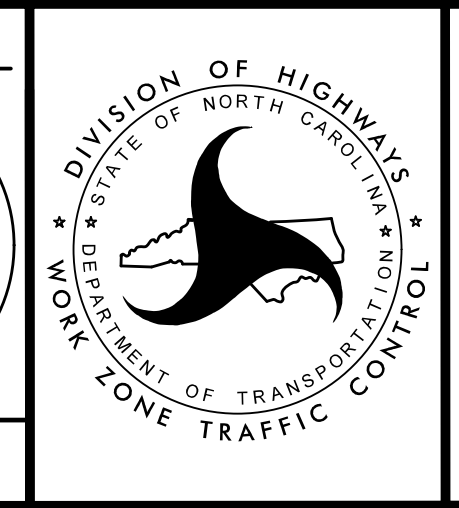
WEDGE -L- AND -Y22- (NC 87),
CONSTRUCT TEMPORARY GRADE TIE IN
TO EXISTING DRIVEWAYS AND TEMPORARY
SLOPE TO EXISTING DITCHES



2/6/2019
HNTB

HNTB HNTB NORTH CAROLINA, P.C.
343 E. Six Forks Road, Suite 200
Raleigh, North Carolina 27609
NC License No: C-1554

APPROVED: *Helen Skyy*
DATE: 2/6/2019
SEAL



TRANSPORTATION
MANAGEMENT PLAN

PHASE IA
DETAIL

DOCUMENT NOT CONSIDERED FINAL
UNLESS ALL SIGNATURES COMPLETED