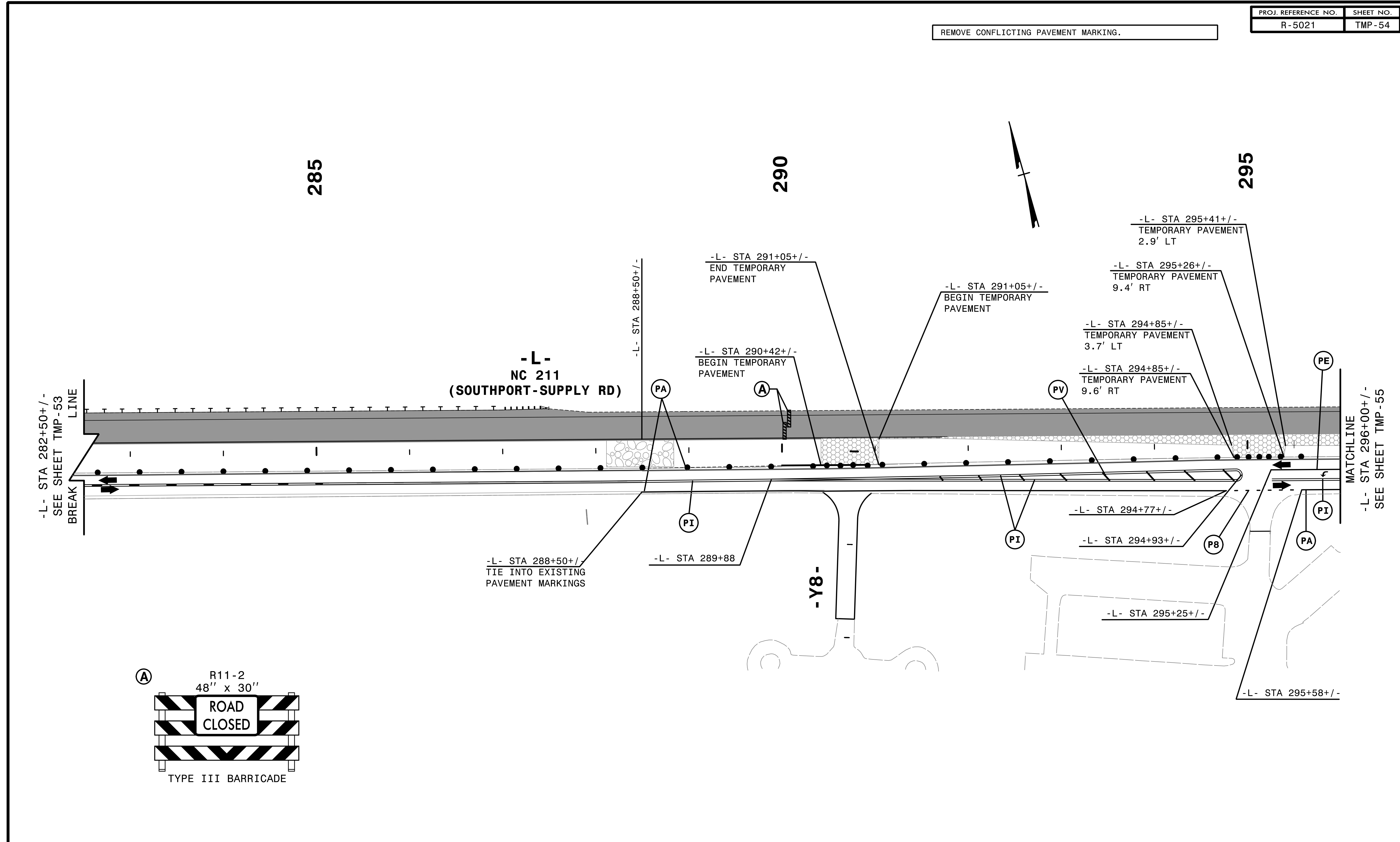


PROJ. REFERENCE NO.	SHEET NO.
R-5021	TMP-54

REMOVE CONFLICTING PAVEMENT MARKING.



-L- STA 282+50+/-
SEE SHEET TMP-53
BREAK LINE

-L-
NC 211
(SOUTHPORT-SUPPLY RD)

-L- STA 288+50+/-
TIE INTO EXISTING
PAVEMENT MARKINGS

-L- STA 289+88

-L- STA 291+05+/-
END TEMPORARY
PAVEMENT

-L- STA 290+42+/-
BEGIN TEMPORARY
PAVEMENT

-L- STA 291+05+/-
BEGIN TEMPORARY
PAVEMENT

-L- STA 295+26+/-
TEMPORARY PAVEMENT
9.4' RT

-L- STA 294+85+/-
TEMPORARY PAVEMENT
3.7' LT

-L- STA 294+85+/-
TEMPORARY PAVEMENT
9.6' RT

-L- STA 295+41+/-
TEMPORARY PAVEMENT
2.9' LT

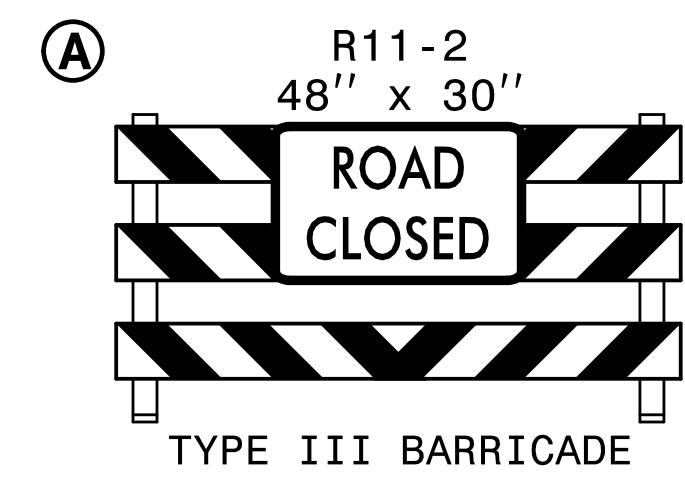
-L- STA 294+77+/-

-L- STA 294+93+/-

-L- STA 295+25+/-

-L- STA 295+58+/-

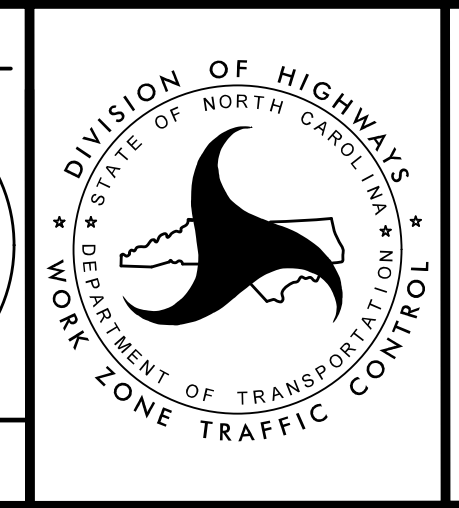
MATCHLINE
-L- STA 296+00+/-
SEE SHEET TMP-55



2/6/2019
HNTB

HNTB HNTB NORTH CAROLINA, P.C.
343 E. Six Forks Road, Suite 200
Raleigh, North Carolina 27609
NC License No: C-1554

APPROVED: *Helen Skyy*
DATE: 2/6/2019
SEAL
DOCUMENT NOT CONSIDERED FINAL
UNLESS ALL SIGNATURES COMPLETED



TRANSPORTATION
MANAGEMENT PLAN

PHASE IA
DETAIL