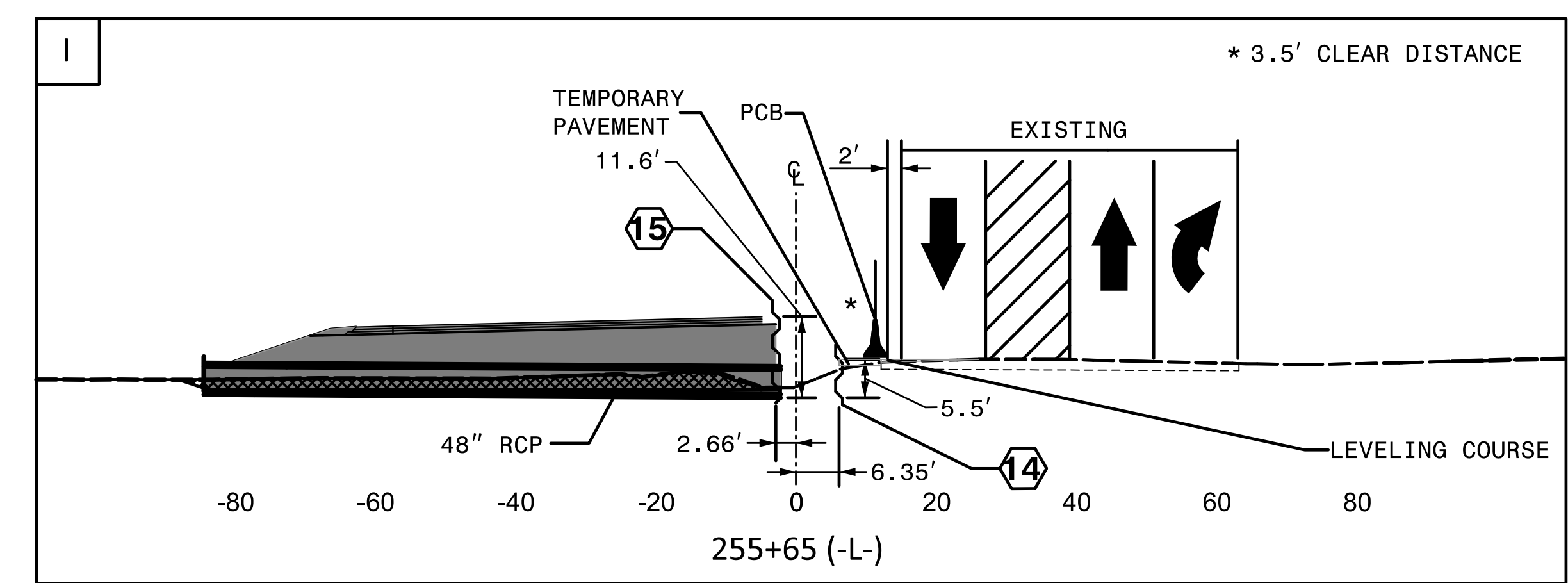
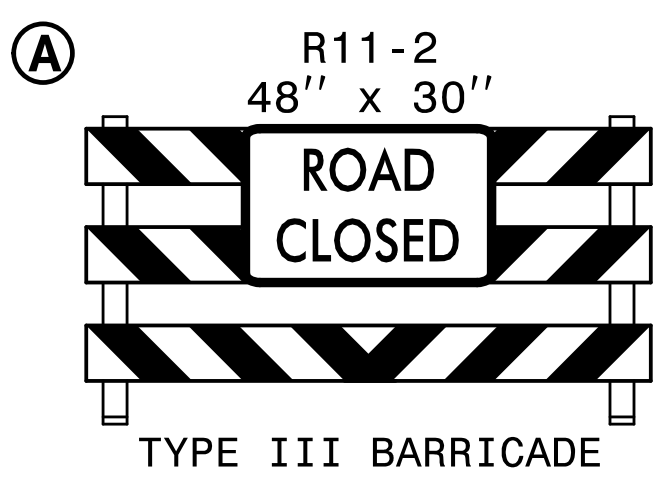
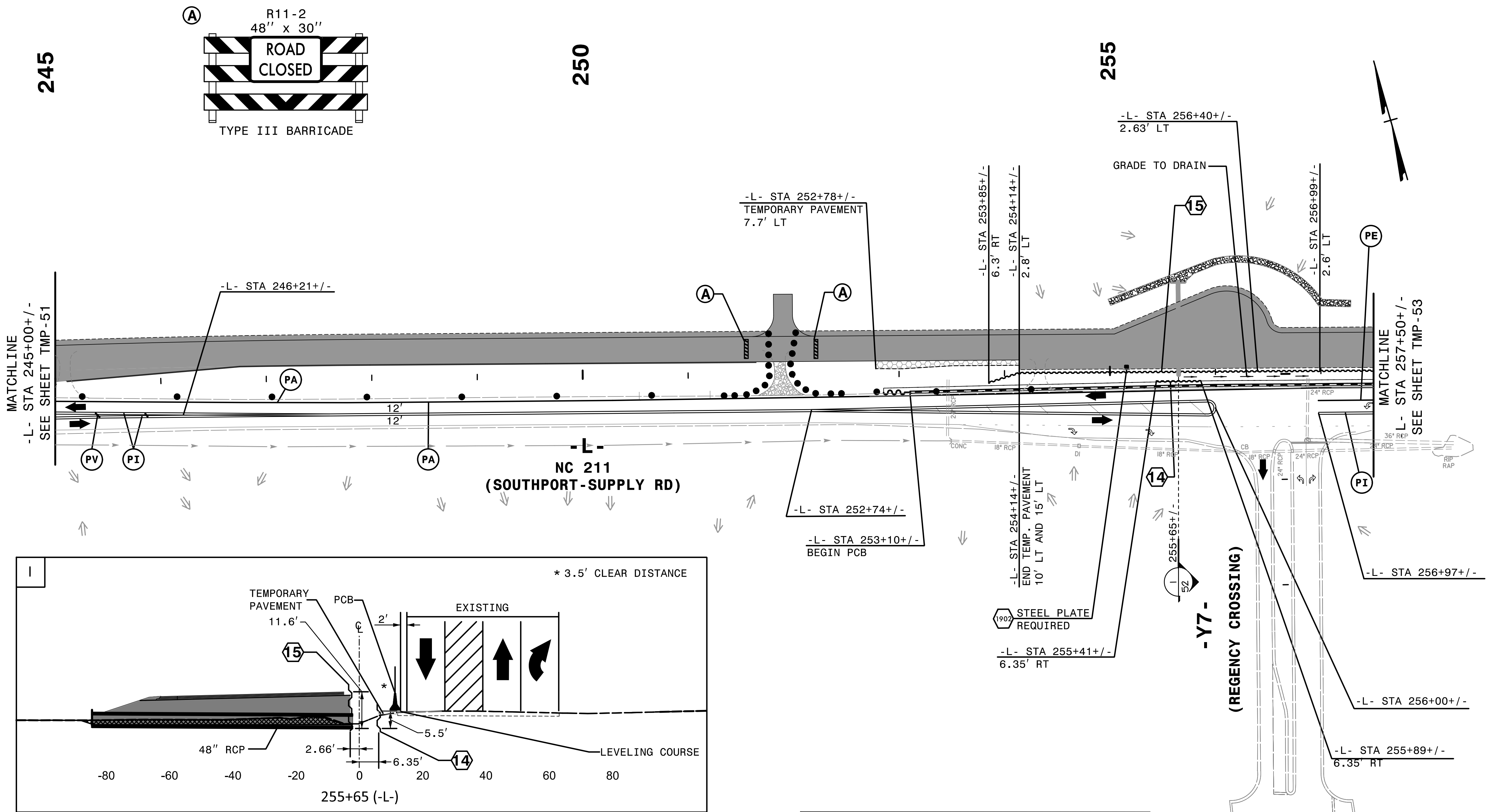


REMOVE CONFLICTING PAVEMENT MARKING.



14 EST QUANTITY = 170.5 SF

TEMPORARY SHORING
 FROM -L- STA 255+41+/-, 6.4' RT
 TO -L- STA 255+89+/-, 6.4' RT

(SEE SHEET TMP-2G FOR
 TEMPORARY SHORING NOTES)

15 EST QUANTITY = 8652.67 SF

TEMPORARY SHORING
 FROM -L- STA 253+85+/-, 6.3' RT
 TO -L- STA 254+14+/-, 2.8' LT AND
 FROM -L- STA 254+14+/-, 2.8' LT
 TO -L- STA 256+40+/-, 2.63' LT AND
 FROM -L- STA 256+40+/-, 2.63' LT
 TO -L- STA 256+99+/-, 2.6' LT AND
 FROM -L- STA 258+37+/-, 2.1' LT AND
 FROM -L- STA 258+37+/-, 2.1' LT
 TO -L- STA 260+12+/-, 0.3' LT AND
 FROM -L- STA 260+12+/-, 0.3' LT
 TO -L- STA 262+79+/-, 8.9' LT.

(SEE SHEET TMP-2G FOR
 TEMPORARY SHORING NOTES)

NOTE: DRAINAGE INFO SHOWN IS ONLY FOR CONTRACTOR CONSIDERATION. CONTRACTOR SHOULD VERIFY THAT PONDING OF WATER WILL NOT OCCUR IN THE TRAVEL LANES.

4:53:05 PM
 \\TCPLV5021\cpl\d\id2a.dgn
 \$\$\$USERNAME\$\$\$

HNTB HNTB NORTH CAROLINA, P.C.
 343 E. Six Forks Road, Suite 200
 Raleigh, North Carolina 27609
 NC License No: C-1554

APPROVED: *Helen Shyne*
 DATE: 9/9/2021

SEAL

PROFESSIONAL SEAL
 042517
 ENGINEER
 HELEN SHYNE

DOCUMENT NOT CONSIDERED FINAL
 UNLESS ALL SIGNATURES COMPLETED

DIVISION OF HIGHWAYS
 NORTH CAROLINA
 DEPARTMENT OF TRANSPORTATION
 WORK ZONE TRAFFIC CONTROL

TRANSPORTATION
 MANAGEMENT PLAN

PHASE IA
 DETAIL