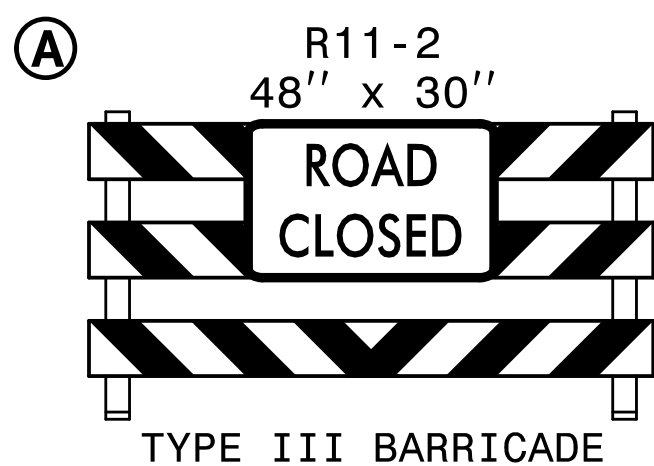
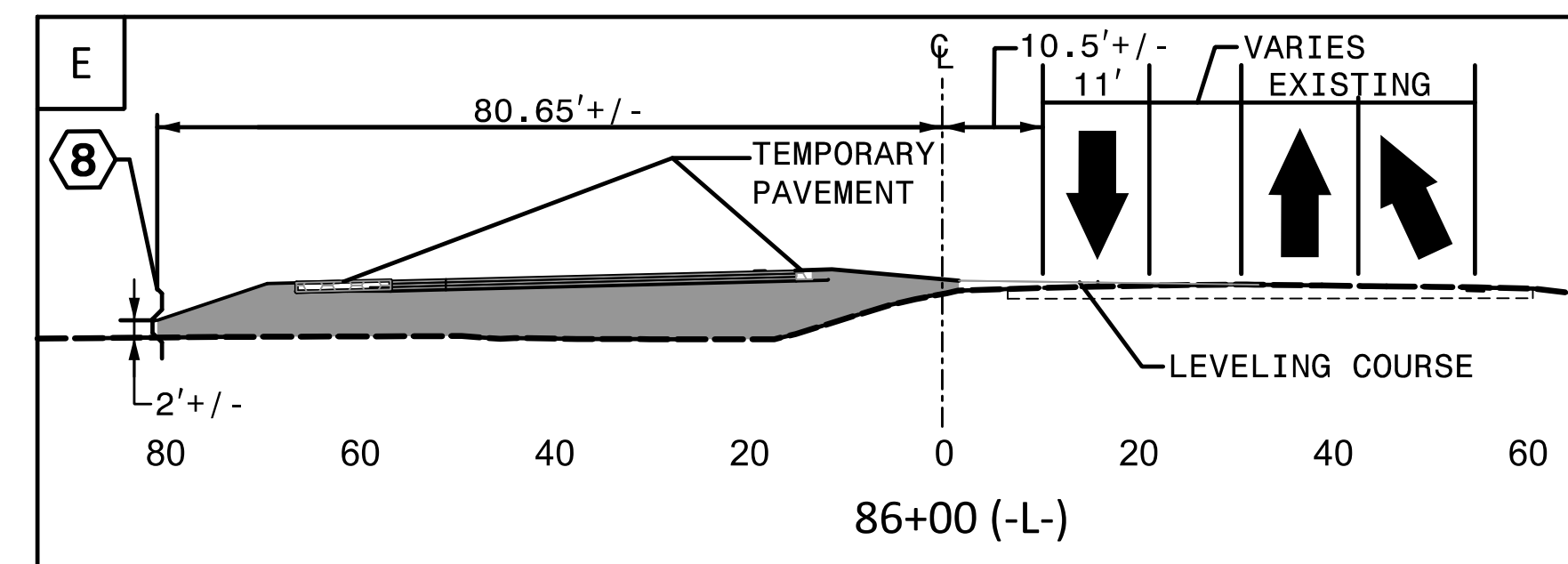
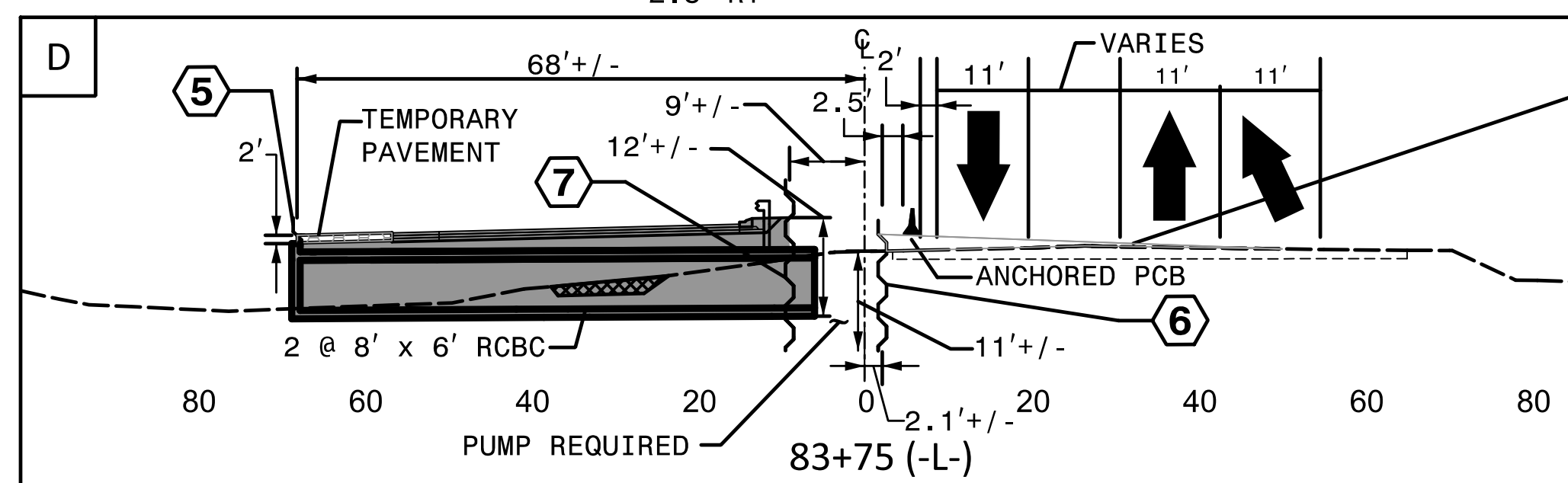
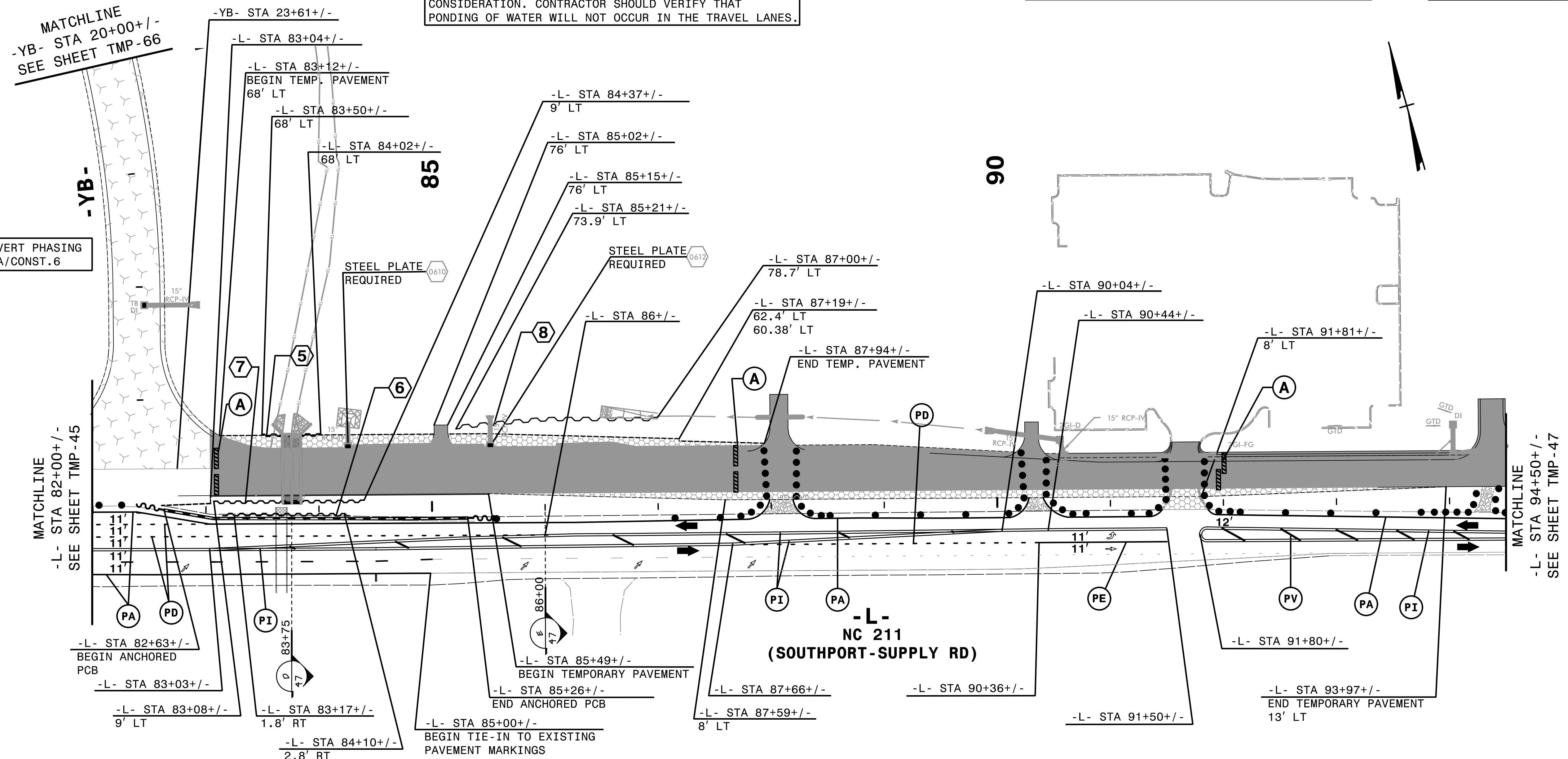


NOTE: DRAINAGE INFO SHOWN IS ONLY FOR CONTRACTOR CONSIDERATION. CONTRACTOR SHOULD VERIFY THAT PONDING OF WATER WILL NOT OCCUR IN THE TRAVEL LANES.

REMOVE CONFLICTING PAVEMENT MARKING.

SEE CULVERT PHASING ON EC-6A/CONST. 6



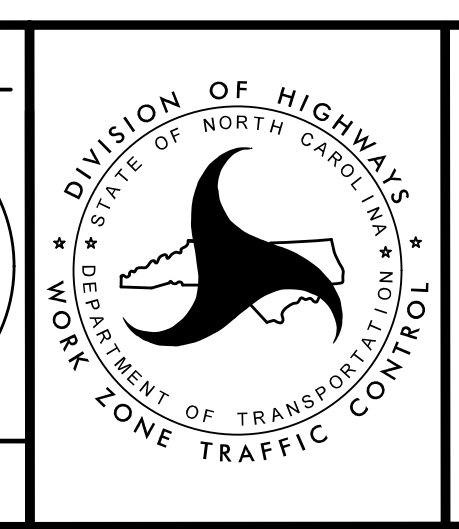
5 EST QUANTITY = 104 SF
 TEMPORARY SHORING
 FROM -L- STA 83+50+/-, 68' LT,
 TO -L- STA 84+02+/-, 68' LT.
 (SEE SHEET TMP-2G FOR
 TEMPORARY SHORING NOTES)

6 EST QUANTITY = 660 SF
 TEMPORARY SHORING
 FROM -L- STA 83+17+/-, 1.8' RT,
 TO -L- STA 84+10+/-, 2.8' RT.
7 EST QUANTITY = 1296 SF
 TEMPORARY SHORING
 FROM -L- STA 83+08+/-, 9' LT,
 TO -L- STA 84+37+/-, 9' LT.

8 EST QUANTITY = 383.06 SF
 TEMPORARY SHORING
 FROM -L- STA 85+21+/-, 73.9' LT,
 TO -L- STA 86+00+/-, 80.7' LT,
 FROM -L- STA 86+00+/-, 80.7' LT,
 TO -L- STA 87+00+/-, 78.7' LT.

HNTB HNTB NORTH CAROLINA, P.C.
 343 E. Six Forks Road, Suite 200
 Raleigh, North Carolina 27609
 NC License No: C-1554

APPROVED: *Helen Shyne*
 DATE: 9/9/2021
 SEAL
 DOCUMENT NOT CONSIDERED FINAL
 UNLESS ALL SIGNATURES COMPLETED



TRANSPORTATION
 MANAGEMENT PLAN
 PHASE IA
 DETAIL

4:52:50 PM
 ...\\TCPLV5021..._TC..._p1d4a.dgn
 \$\$\$USERNAME\$\$\$