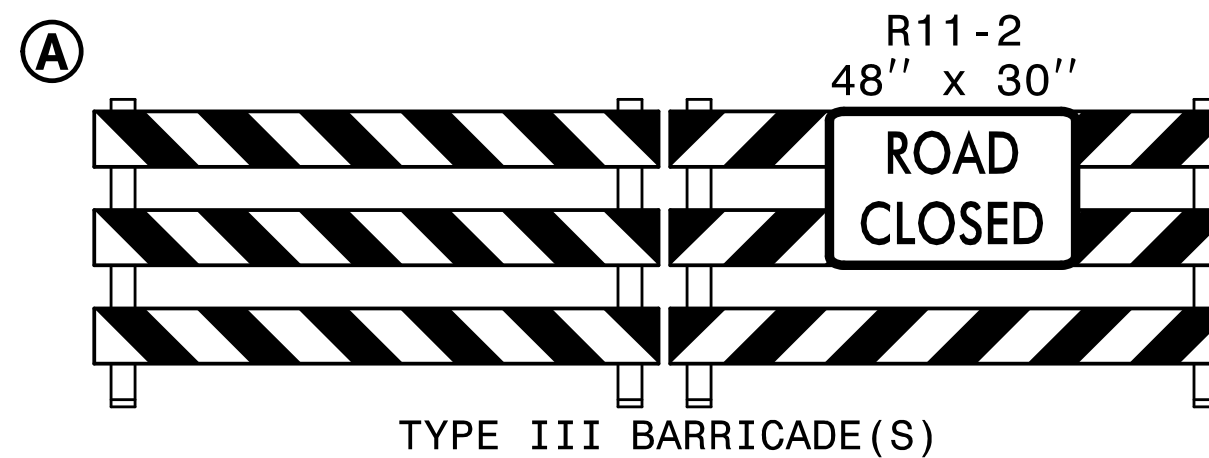


PROJ. REFERENCE NO.	SHEET NO.
R-5021	TMP-13

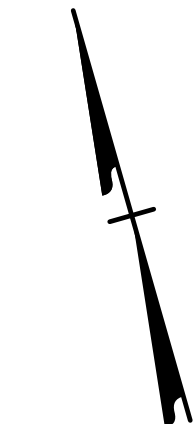
MATCHLINE
-YB- STA 20+00+/-
SEE SHEET TMP-33

-YB-

85



90



MATCHLINE
-L- STA 82+00+/-
SEE SHEET TMP-12

-L- STA 83+04+/-

-L- STA 82+61+/-
BEGIN TEMPORARY PAVEMENT
6.5' LT

-L- STA 83+04+/-
END TEMPORARY PAVEMENT
8.0' LT

-L- STA 85+00+/-
BEGIN LEVELING COURSE

-L- STA 93+00+/-
END LEVELING COURSE
BEGIN LEVELING COURSE

BREAK
LINE
-L- STA. 94+50+/-
SEE SHEET TMP-14

-L- STA 85+00+/-
END TEMPORARY GRADE

-L-
NC 211
(SOUTHPORT-SUPPLY RD)

PROVIDE SMOOTH TRANSITION GRADE
FROM PROPOSED TO EXISTING. RESET
GUARDRAIL. REPLACE PAVEMENT MARKING.

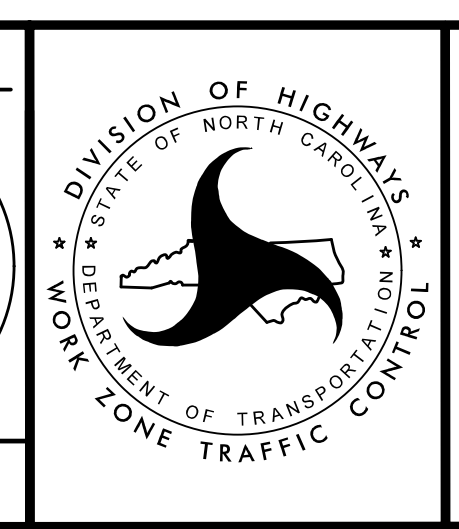
-L- STA 83+05+/-
BEGIN TEMP GRADE

REPLACE PAVEMENT MARKING IN EXISTING PATTERN.

2/6/2019
TCPLV502L.tc_pid4.dgn
HNTB

HNTB
HNTB NORTH CAROLINA, P.C.
343 E. Six Forks Road, Suite 200
Raleigh, North Carolina 27609
NC License No: C-1554

APPROVED: *Helen Skyy*
DATE: 2/6/2019
SEAL



TRANSPORTATION
MANAGEMENT PLAN

PHASE I
DETAIL

DOCUMENT NOT CONSIDERED FINAL
UNLESS ALL SIGNATURES COMPLETED