

Location and Surveys

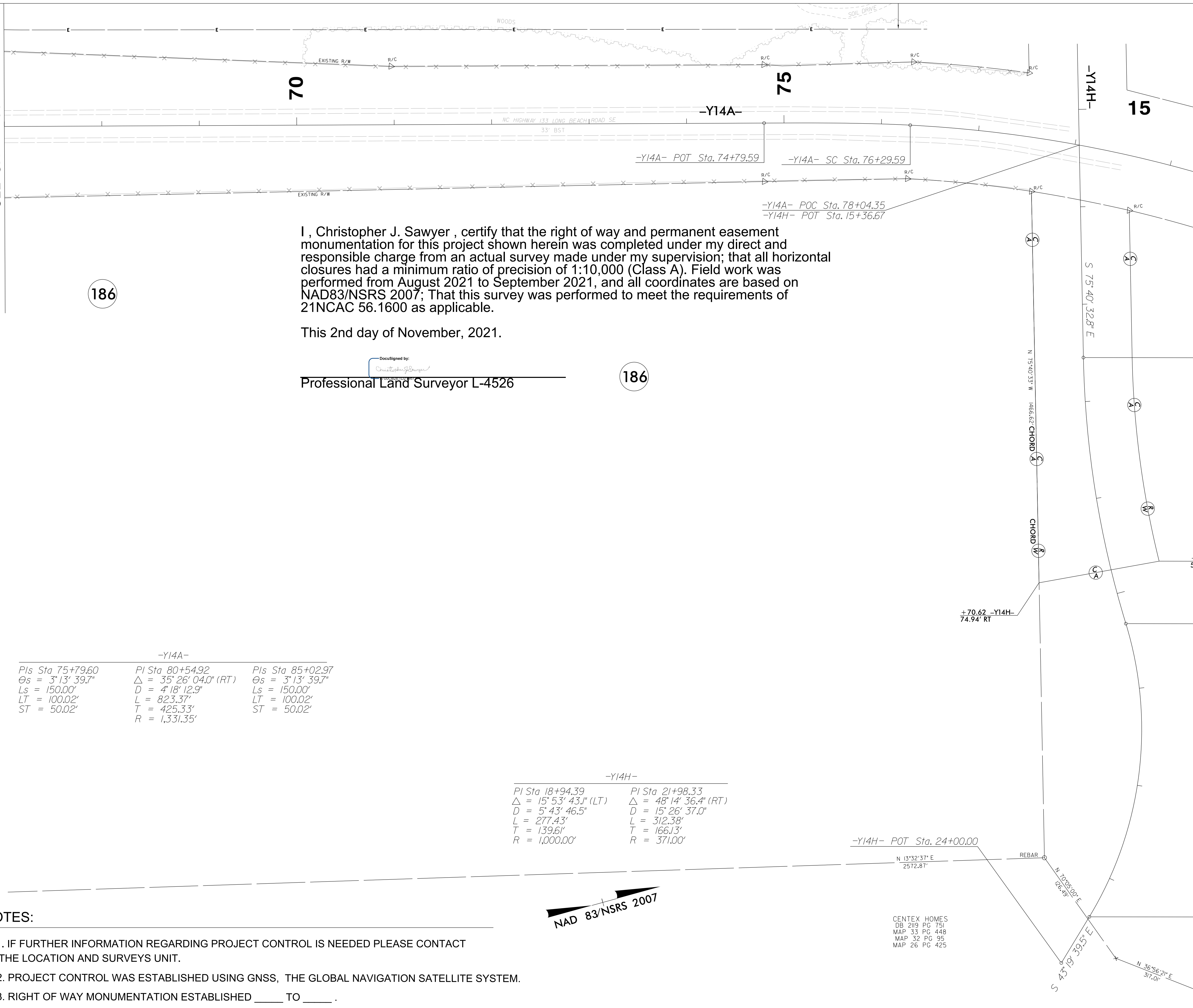
LOCATION AND SURVEYS DIVISION 3 5310 BARBADOS BLVD., SUITE 102 CASTLE HAYNE, NC 28429

PROJECT SURVEYOR



DOCUMENT NOT CONSIDERED FINAL UNLESS ALL SIGNATURES COMPLETED

MATCH LINE -Y14A- STA 67 + 00.00 SEE SHEET 37



I, Christopher J. Sawyer, certify that the right of way and permanent easement monumentation for this project shown herein was completed under my direct and responsible charge from an actual survey made under my supervision; that all horizontal closures had a minimum ratio of precision of 1:10,000 (Class A). Field work was performed from August 2021 to September 2021, and all coordinates are based on NAD83/NSRS 2007; That this survey was performed to meet the requirements of 21NCAC 56.1600 as applicable.

This 2nd day of November, 2021.

Professional Land Surveyor L-4526

-Y14A-		
PIs Sta 75+79.60	PI Sta 80+54.92	PIs Sta 85+02.97
$\theta_s = 3^\circ 13' 39.7''$	$\Delta = 35^\circ 26' 04.0''$ (RT)	$\theta_s = 3^\circ 13' 39.7''$
$L_s = 150.00'$	$D = 4' 18' 12.9''$	$L_s = 150.00'$
$LT = 100.02'$	$L = 823.37'$	$LT = 100.02'$
$ST = 50.02'$	$T = 425.33'$	$ST = 50.02'$
	$R = 1,331.35'$	

-Y14H-	
PI Sta 18+94.39	PI Sta 21+98.33
$\Delta = 15^\circ 53' 43.1''$ (LT)	$\Delta = 48^\circ 14' 36.4''$ (RT)
$D = 5^\circ 43' 46.5''$	$D = 15^\circ 26' 37.0''$
$L = 277.43'$	$L = 312.38'$
$T = 139.61'$	$T = 166.13'$
$R = 1,000.00'$	$R = 371.00'$

NOTES:

- IF FURTHER INFORMATION REGARDING PROJECT CONTROL IS NEEDED PLEASE CONTACT THE LOCATION AND SURVEYS UNIT.
- PROJECT CONTROL WAS ESTABLISHED USING GNSS, THE GLOBAL NAVIGATION SATELLITE SYSTEM.
- RIGHT OF WAY MONUMENTATION ESTABLISHED ____ TO ____ .

REVISIONS