
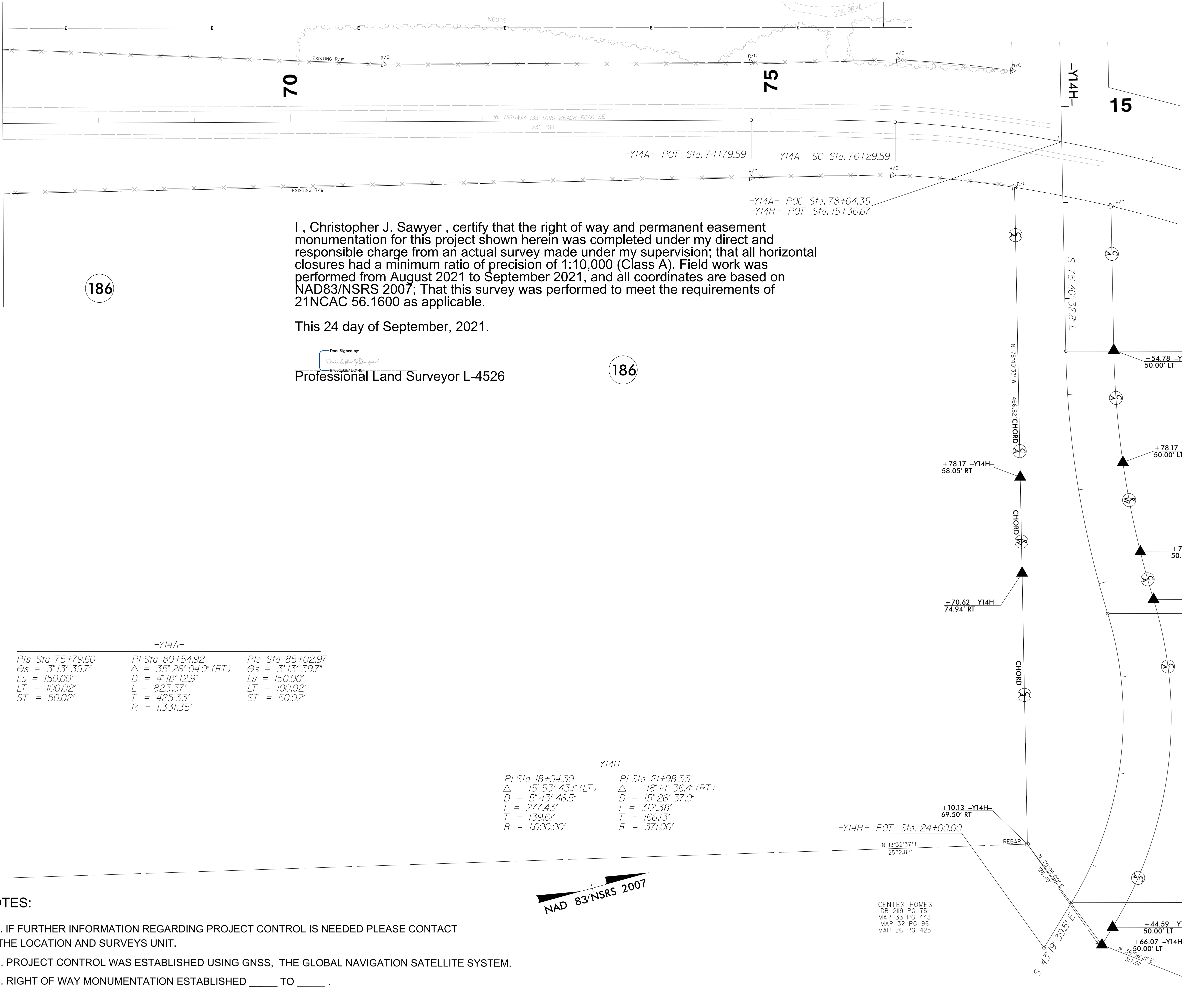


PROJECT REFERENCE NO.	SHEET NO.
R-5021	RW37A
Location and Surveys	
LOCATION AND SURVEYS DIVISION 3 5310 BARBADOS BLVD, SUITE 102 CASTLE HAYNE, NC 28429	
PROJECT SURVEYOR	
	
DOCUMENT NOT CONSIDERED FINAL UNLESS ALL SIGNATURES COMPLETED	

MATCH LINE -Y14A- STA 67 + 00.00
SEE SHEET 37



I, Christopher J. Sawyer, certify that the right of way and permanent easement monumentation for this project shown herein was completed under my direct and responsible charge from an actual survey made under my supervision; that all horizontal closures had a minimum ratio of precision of 1:10,000 (Class A). Field work was performed from August 2021 to September 2021, and all coordinates are based on NAD83/NSRS 2007; That this survey was performed to meet the requirements of 21NCAC 56.1600 as applicable.

This 24 day of September, 2021.

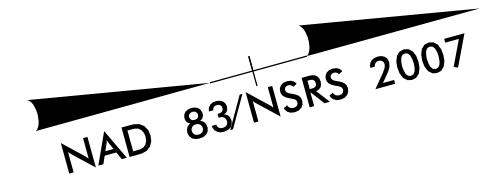
DocuSigned by:
Christopher J. Sawyer
Professional Land Surveyor L-4526

-Y14A-		
PIs Sta 75+79.60	PI Sta 80+54.92	PIs Sta 85+02.97
$\theta_s = 3^\circ 13' 39.7''$	$\Delta = 35^\circ 26' 04.0''$ (RT)	$\theta_s = 3^\circ 13' 39.7''$
$L_s = 150.00'$	$D = 4^\circ 18' 12.9''$	$L_s = 150.00'$
$LT = 100.02'$	$L = 823.37'$	$LT = 100.02'$
$ST = 50.02'$	$T = 425.33'$	$ST = 50.02'$
	$R = 1,331.35'$	

-Y14H-	
PI Sta 18+94.39	PI Sta 21+98.33
$\Delta = 15^\circ 53' 43.1''$ (LT)	$\Delta = 48^\circ 14' 36.4''$ (RT)
$D = 5^\circ 43' 46.5''$	$D = 15^\circ 26' 37.0''$
$L = 277.43'$	$L = 312.38'$
$T = 139.61'$	$T = 166.13'$
$R = 1,000.00'$	$R = 371.00'$

NOTES:

1. IF FURTHER INFORMATION REGARDING PROJECT CONTROL IS NEEDED PLEASE CONTACT THE LOCATION AND SURVEYS UNIT.
2. PROJECT CONTROL WAS ESTABLISHED USING GNSS, THE GLOBAL NAVIGATION SATELLITE SYSTEM.
3. RIGHT OF WAY MONUMENTATION ESTABLISHED ____ TO ____.



CENTEX HOMES
DB 2119 PG 751
MAP 33 PG 448
MAP 32 PG 95
MAP 26 PG 425

REVISIONS

27-SEP-2021 10:50
 S:\Users\j1033\Projects\RURAL_Brunswick Co\15021\Working\15021.LS_RM37A.dgn
 15021.LS_299836
 m.jduval