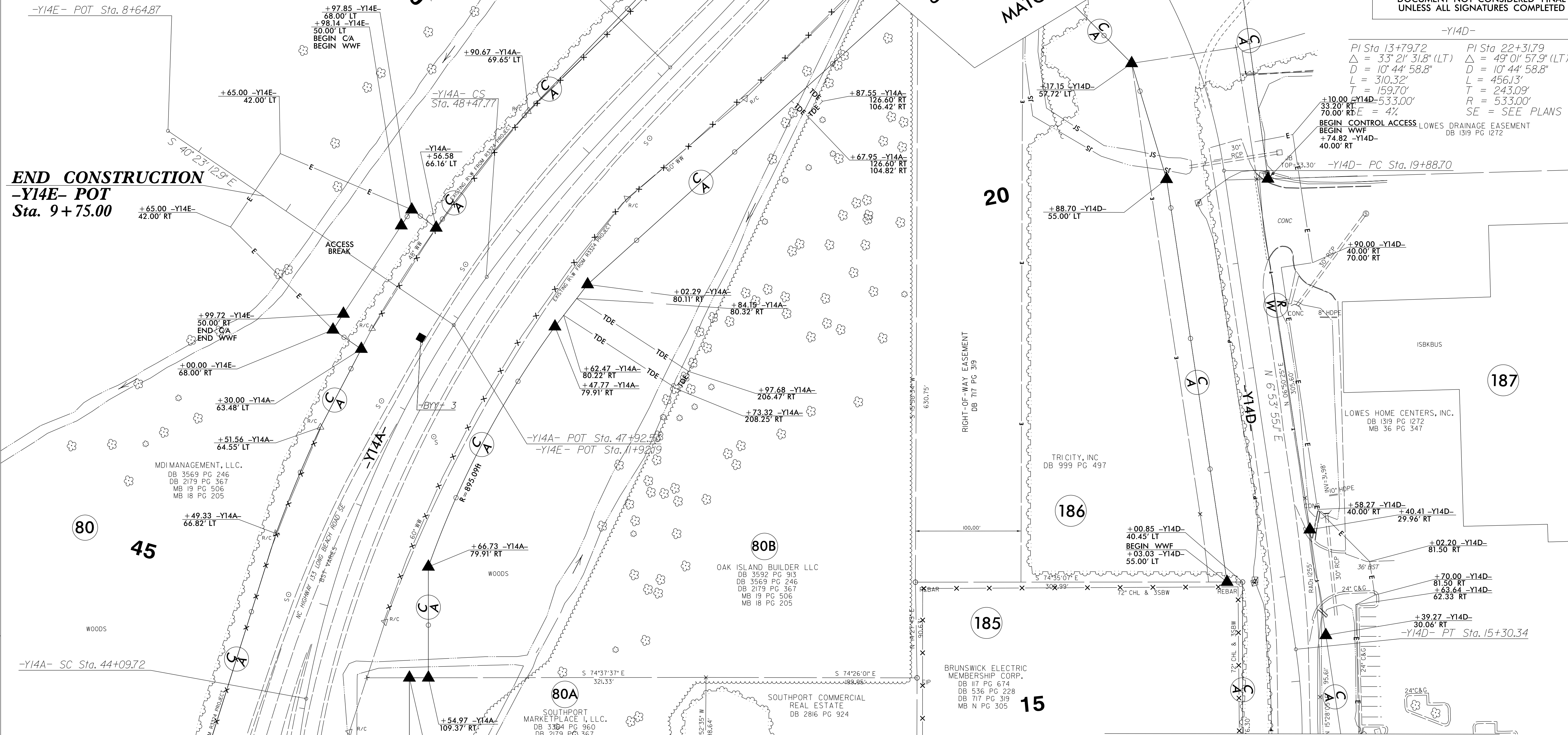


6/2/09
REVISIONS
SYTIME
BULGERNAME

-Y14A-		
Pls Sta 43+21.89 Os = 7' 45" 25.1" Ls = 264.00' LT = 176.17' ST = 88.15'	Pls Sta 46+32.50 Δ = 25' 44" 32.1" (RT) D = 5' 52" 35.4" L = 438.06' T = 222.79' R = 975.00' SE = SEE PLANS	Pls Sta 49+35.92 Os = 7' 45" 25.1" Ls = 264.00' LT = 176.17' ST = 88.15'
-Y14A-		
Pls Sta 52+87.87 Os = 5' 54" 47.7" Ls = 264.00' LT = 176.10' ST = 88.09'	Pls Sta 57+76.58 Δ = 34' 47" 57.5" (LT) D = 4' 28" 47.0" L = 776.82' T = 400.81' R = 1,279.00' SE = SEE PLANS	Pls Sta 62+02.60 Os = 3' 21" 35.3" Ls = 150.00' LT = 100.02' ST = 50.02'

-Y14E- POT Sta. 8+64.87
END CONSTRUCTION
-Y14E- POT
Sta. 9+75.00

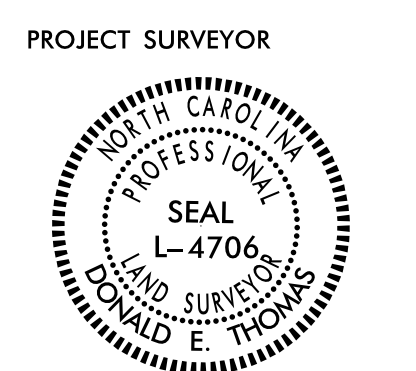


I, Donald E. Thomas, certify that the right of way and permanent easement monumentation for this project shown herein was completed under my direct and responsible charge from an actual survey made under my supervision; that all horizontal closures had a minimum ratio of precision of 1:10,000 (Class A). Field work was performed from 01/08/2020 to 04/24/2020, and all coordinates are based on NAD83/2011; that this survey was performed to meet the requirements of 21NCAC 56.1600 as applicable.
This 24th day of April, 2020.
Donald E. Thomas
Professional Land Surveyor L-4706

PROJECT REFERENCE NO.	SHEET NO.
R-5021	RW36

Location and Surveys

ESP ASSOCIATES, INC.
211 RACINE DRIVE, SUITE 101
WILMINGTON, NC 28403



DOCUMENT NOT CONSIDERED FINAL UNLESS ALL SIGNATURES COMPLETED

-Y14D-	
Pls Sta 13+79.72 Δ = 33' 21" 31.8" (LT) D = 10' 44" 58.8" L = 310.32' T = 159.70' R = 533.00' SE = SEE PLANS	Pls Sta 22+31.79 Δ = 49' 01" 57.9" (LT) D = 10' 44" 58.8" L = 456.13' T = 243.09' R = 533.00' SE = SEE PLANS

- NOTES:**
- IF FURTHER INFORMATION REGARDING PROJECT CONTROL IS NEEDED PLEASE CONTACT THE LOCATION AND SURVEYS UNIT.
 - PROJECT CONTROL WAS ESTABLISHED USING GNSS, THE GLOBAL NAVIGATION SATELLITE SYSTEM.
 - RIGHT OF WAY MONUMENTATION ESTABLISHED _____ TO _____.