

6/2/19

REVISIONS

DATE TIME BY  
DESCRIPTION  
REVISION

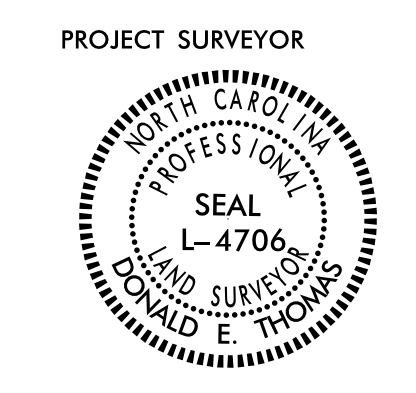
SURVEY OF  
THE NORTH BAY  
CONSERVATION EASEMENT  
FOR  
THE NORTH CAROLINA  
DEPARTMENT OF TRANSPORTATION

146  
ST. JAMES  
PLANTATION, POA, INC  
DB 2868 PG 618  
DB 2307 PG 251  
DB 2669 PG 1105  
MB 57 PG 1-6  
MB 56 PG 88  
MB 34 PG 30  
MB 42 PG 46-50

55

NAD 83/NSRS 2007

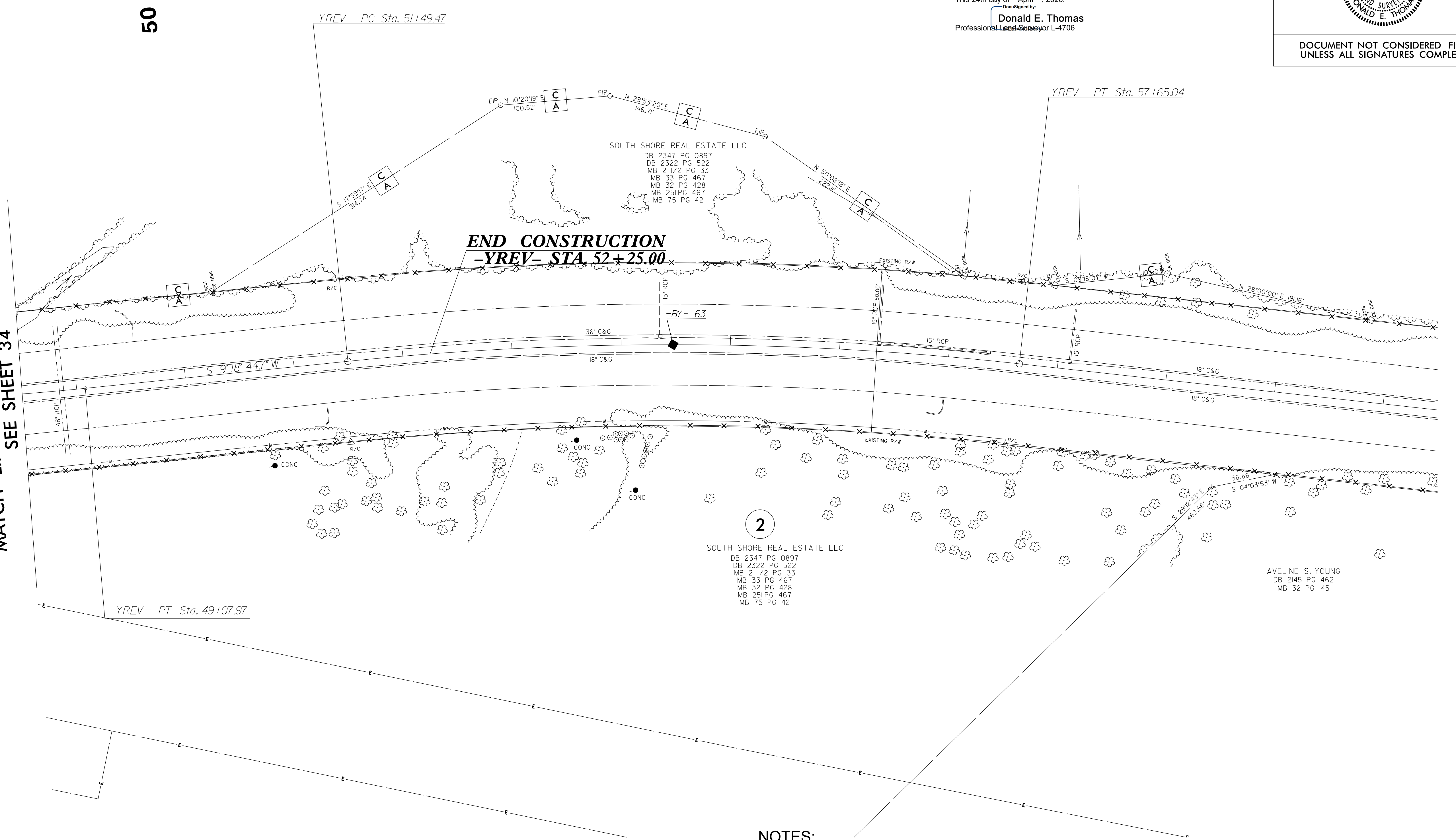
PROJECT REFERENCE NO. R-5021 SHEET NO. RW34A  
**Location and Surveys**  
ESP ASSOCIATES, INC.  
211 RACINE DRIVE, SUITE 101  
WILMINGTON, NC 28403



I, Donald E. Thomas, certify that the right of way and permanent easement monumentation for this project shown herein was completed under my direct and responsible charge from an actual survey made under my supervision; that all horizontal closures had a minimum ratio of precision of 1:10,000 (Class A). Field work was performed from 01/08/2020 to 04/24/2020, and all coordinates are based on NAD83/2011; That this survey was performed to meet the requirements of 21NCAC 56.1600 as applicable.  
This 24th day of April, 2020.  
Donald E. Thomas  
Professional Land Surveyor L-4706

DOCUMENT NOT CONSIDERED FINAL  
UNLESS ALL SIGNATURES COMPLETED

MATCH LINE -YREV- STA 48 + 50.00  
SEE SHEET 34



2  
SOUTH SHORE REAL ESTATE LLC  
DB 2347 PG 0897  
DB 2322 PG 522  
MB 2 1/2 PG 33  
MB 33 PG 467  
MB 32 PG 428  
MB 25 PG 467  
MB 75 PG 42

AVELINE S. YOUNG  
DB 2145 PG 462  
MB 32 PG 145

NOTES:

- 1. IF FURTHER INFORMATION REGARDING PROJECT CONTROL IS NEEDED PLEASE CONTACT THE LOCATION AND SURVEYS UNIT.
- 2. PROJECT CONTROL WAS ESTABLISHED USING GNSS, THE GLOBAL NAVIGATION SATELLITE SYSTEM.
- 3. RIGHT OF WAY MONUMENTATION ESTABLISHED \_\_\_\_ TO \_\_\_\_.